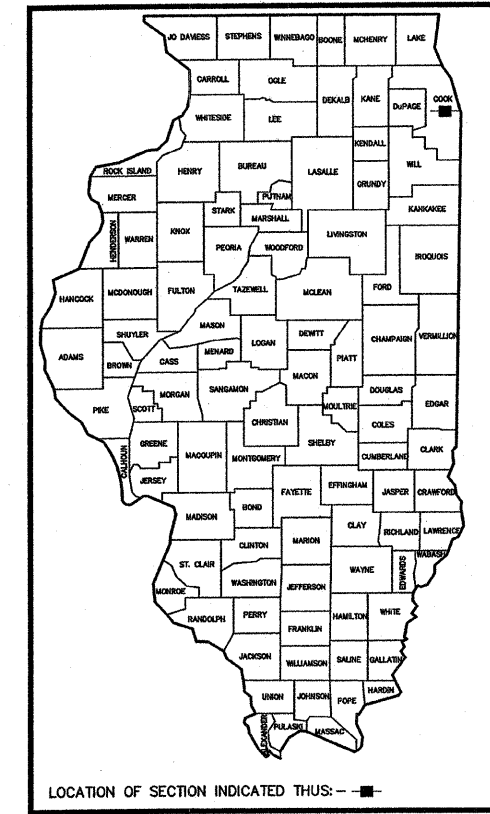


FAU RTE	SECTION	COUNTY	TOTAL SHEETS	SHEET NO.
2803	07-00202-00-RS	COOK	12	1
F. HW. A. REG.	ILLINOIS PROJECT	M-8003(915)		

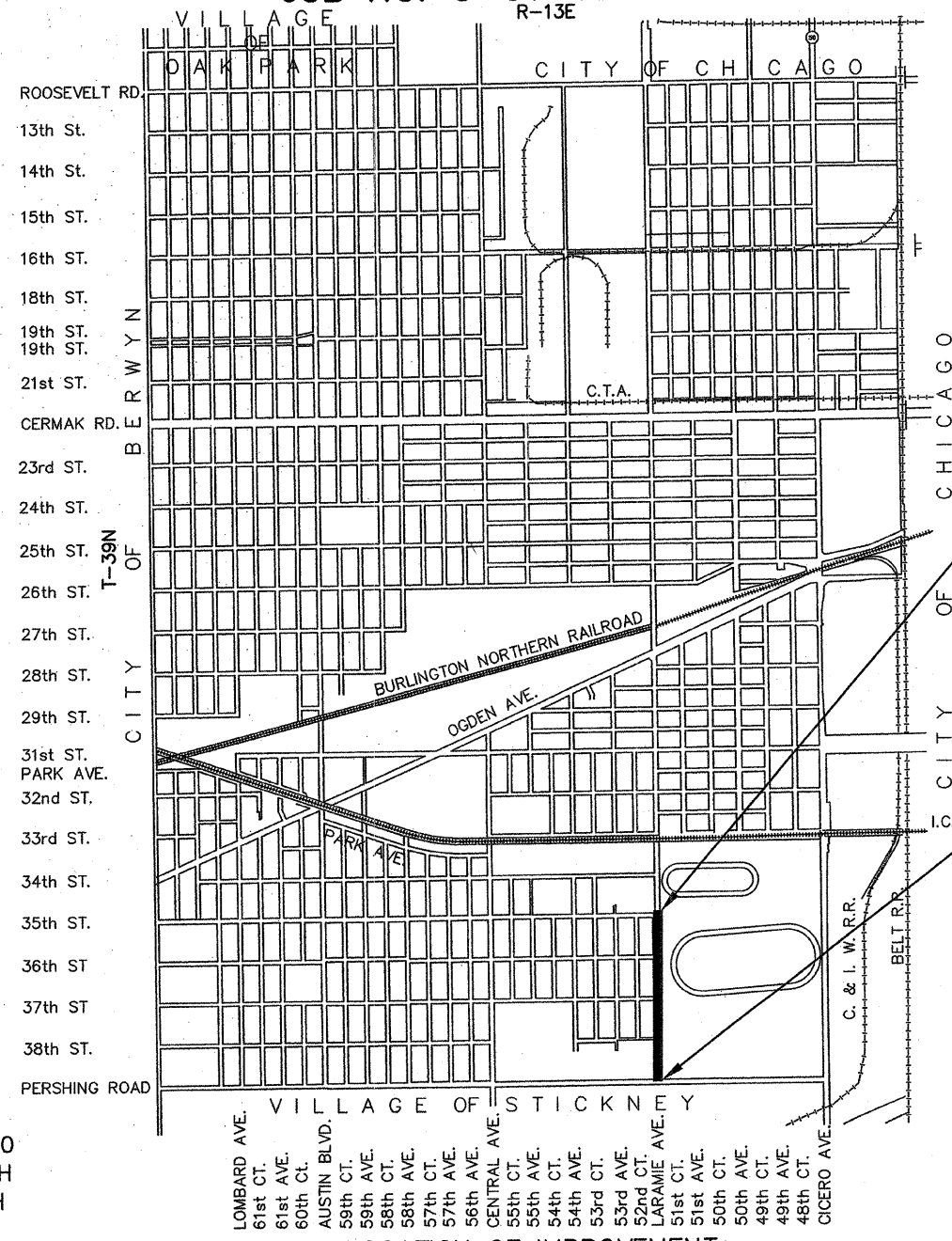
CONTRACT NO. 63014

STATE OF ILLINOIS  
DEPARTMENT OF TRANSPORTATION  
DIVISION OF HIGHWAYS  
PLANS FOR PROPOSED  
FEDERAL AID HIGHWAY  
F.A.U. RTE. 2803 (LARAMIE AVENUE)  
FROM PERSHING ROAD to 35th STREET  
LAPP RESURFACING  
FEDERAL PROJECT M-8003(915)  
SECTION NO. 07-00202-00-RS  
TOWN OF CICERO  
COOK COUNTY  
JOB NO. C-91-135-08  
R-13E

FOR INDEX OF SHEETS AND INDEX OF STATE STANDARDS, SEE SHEET NO. 2



LOCATION OF SECTION INDICATED THUS: -■-



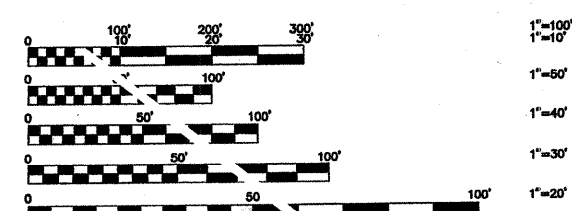
LARAMIE AVENUE  
PROJECT ENDS  
STA. 66+87

LARAMIE AVENUE  
PROJECT BEGINS  
STA. 40+09

PROJECT LOCATED IN THE  
TOWN OF CICERO  
TOWNSHIP 39 NORTH  
RANGE 13 EAST  
CICERO TOWNSHIP  
SOUTHWEST 1/4 SECTION 33

LENGTH OF PROJECT

GROSS LENGTH OF PROJECT 2,678 FEET (0.5072 MILES)  
NET LENGTH OF PROJECT 2,678 FEET (0.5072 MILES)



FULL SIZE PLANS HAVE BEEN PREPARED USING STANDARD ENGINEERING SCALES. REDUCED SIZED PLANS WILL NOT CONFORM TO STANDARD SCALES. IN MAKING MEASUREMENTS ON REDUCED PLANS, THE ABOVE SCALES MAY BE USED.

LARAMIE AVENUE ADT = 16,000  
POSTED SPEED LIMIT = 25 MPH  
DESIGN SPEED LIMIT = 25 MPH

DESIGN DESIGNATION: 16,000(08) MAJOR COLLECTOR 3.88 (FD-20)

FIELD ENGINEER: MARILIN SOLOMON (847)705-4407  
CONSULTANT: FRANK NOVOTNY AND ASSOCIATES, INC. (630)887-8640

CONTRACT NO. 63014

REVISIONS			
NO.	BY	DATE	DESCRIPTION
1	AMS	1/10/08	IDOT COMMENTS

STATE OF ILLINOIS  
DEPARTMENT OF TRANSPORTATION  
DIVISION OF HIGHWAYS

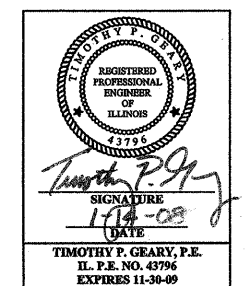
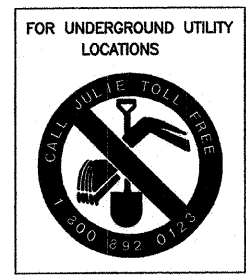
APPROVED JANUARY 14<sup>TH</sup> 2008

TOWN CLERK Marilyn Colpo

PASSED FEBRUARY 19, 2008

RELEASING FOR BID  
BASED ON LIMITED  
REVIEW FEBRUARY 19, 2008

Diana M. O'Keefe DEPUTY DIRECTOR OF HIGHWAYS, REGION #1 ENGINEER



PRINTED BY THE AUTHORITY OF THE STATE OF ILLINOIS

FAU RTE	SECTION	COUNTY	TOTAL SHEETS	SHEET NO.
2803	07-00202-00-RS	COOK	12	2
F. HW. A. REG.	ILLINOIS	PROJECT	M-8003(915)	

CONTRACT NO. 63014

**INDEX TO SHEETS**


- 1.) COVER SHEET AND LOCATION MAP
- 2.) GENERAL CONSTRUCTION NOTES, INDEX TO SHEETS AND STATE STANDARDS
- 3.) SUMMARY OF QUANTITIES, JOINT DETAILS AND HOT-MIX ASPHALT REQUIREMENTS
- 4.) PLAN: LARAMIE AVENUE (PAVING)
- 5.) PLAN: LARAMIE AVENUE (PAVEMENT MARKING)
- 6.) DISTRICT ONE TYPICAL PAVEMENT MARKINGS
- 7.) TEMPORARY PAVEMENT MARKING LETTERS AND SYMBOLS
- 8.) TRAFFIC CONTROL AND PROTECTION FOR SIDEROADS, INTERSECTIONS, AND DRIVEWAYS
- 9.) SIGNING FOR FLAGGING OPERATIONS AT WORK ZONE OPENINGS
- 10.) CURB OR CURB AND GUTTER REMOVAL AND REPLACEMENT
- 11.) FRAMES AND LIDS ADJUSTMENTS WITH MILLING
- 12.) BUTT JOINT AND HOT-MIX ASPHALT TAPER DETAILS

**STATE STANDARDS**

- 00001-05 STANDARDS SYMBOLS, ABBREVIATIONS, AND PATTERNS
- 42401-05 CURB RAMPS FOR SIDEWALKS
- 442201-03 CLASS C AND D PATCHES
- 604001-02 FRAME & LIDS, TYPE 1
- 606001-03 CONCRETE CURB AND COMBINATION CONCRETE CURB & GUTTER
- 701606-05 URBAN LANE CLOSURE, MULTILANE, 2W WITH MOUNTABLE MEDIAN
- 701701-05 URBAN LANE CLOSURE, MULTILANE INTERSECTION
- 701801-03 LANE CLOSURE, MULTILANE 1W OR 2W CROSSWALK OR SIDEWALK CLOSURE
- 701901 TRAFFIC CONTROL DEVICES
- 780001-01 TYPICAL PAVEMENT MARKINGS
- 886001 DETECTOR LOOP INSTALLATIONS
- 886006 TYPICAL LAYOUTS FOR DETECTOR LOOPS

**GENERAL CONSTRUCTION NOTES**

- 1. SPECIFICATIONS**  
THE LATEST EDITIONS OF THE "STANDARD SPECIFICATIONS FOR ROAD AND BRIDGE CONSTRUCTION", THE "SUPPLEMENTAL SPECIFICATIONS AND RECURRING SPECIAL PROVISIONS", PREPARED BY THE ILLINOIS DEPARTMENT OF TRANSPORTATION AND THE "MANUAL OF UNIFORM TRAFFIC CONTROL DEVICES" SHALL GOVERN ALL WORK ASSOCIATED WITH THIS PROJECT. THE "STANDARD SPECIFICATIONS FOR WATER AND SEWER MAIN CONSTRUCTION IN ILLINOIS" MAY GOVERN OTHER WORK ON THIS PROJECT AS INDICATED BY REFERENCE.
- 2. CARE IN EXCAVATION**  
CARE SHALL BE EXERCISED BY THE CONTRACTOR IN CARRYING OUT EARTH AND/OR TRENCHING OPERATIONS SO THAT LOCAL SERVICES, WATER VALVES, MANHOLES, CATCH BASINS, INLETS, BUFFALO BOXES, AND OTHER STRUCTURES ARE NOT DAMAGED OR REMOVED. ANY DAMAGE DONE BY THE CONTRACTOR, WHETHER THE STRUCTURE OR SERVICE IS VISIBLE AT THE GROUND SURFACE OR NOT, SHALL BE REPAIRED OR REPLACED BY THE CONTRACTOR AS REQUIRED BY THE ENGINEER AT THE CONTRACTOR'S EXPENSE, AND NO ADDITIONAL COMPENSATION WILL BE ALLOWED.
- 3. NOTIFICATION OF PUBLIC UTILITIES**  
PRIOR TO STARTING CONSTRUCTION, THE CONTRACTOR SHALL NOTIFY THE OFFICIALS OF THE PUBLIC WORKS DEPARTMENT OF THE LOCAL MUNICIPALITY, J.U.L.I.E. AT 1-800-892-0123, AND OTHER PUBLIC AND PRIVATE UTILITIES SO THAT ARRANGEMENTS CAN BE MADE TO LOCATE THEIR VARIOUS FACILITIES WITHIN THE LIMITS OF CONSTRUCTION UNDER THIS CONTRACT, AS WELL AS TO PROVIDE ADEQUATE PROTECTION AND INSPECTION THERETO. IT SHALL BE THIS CONTRACTOR'S RESPONSIBILITY TO DETERMINE THE ACTUAL LOCATION OF ALL SUCH FACILITIES IN THE FIELD.
- 4. TRAFFIC CONTROL DEVICES**  
BARRICADES AND WARNING SIGNS SHALL BE PROVIDED IN ACCORDANCE WITH ARTICLE 107.14 OF THE "STANDARD SPECIFICATIONS FOR ROAD AND BRIDGE CONSTRUCTION". ADEQUATE LIGHTING SHALL BE MAINTAINED FROM DUSK TO DAWN AT ALL LOCATIONS WHERE CONSTRUCTION OPERATIONS WARRANT, OR AS DESIGNATED BY THE ENGINEER.
- 5. PROTECTION OF SIGNS AND PROPERTY**  
ALL TRAFFIC SIGNS, STREET SIGNS, ETC., THAT INTERFERE WITH THE CONSTRUCTION OPERATIONS SHALL BE REMOVED AND PLACED AT NEW LOCATIONS AS DESIGNATED BY THE ENGINEER. THIS WORK SHALL BE CONSIDERED INCIDENTAL TO THE CONTRACT, AND NO ADDITIONAL COMPENSATION WILL BE ALLOWED. IN ADDITION, ALL MAIL BOXES THAT INTERFERE WITH CONSTRUCTION SHALL BE SIMILARLY RELOCATED AT NO ADDITIONAL COST IN ACCORDANCE WITH ARTICLES 107.20 AND 107.21 OF THE "STANDARD SPECIFICATIONS FOR ROAD AND BRIDGE CONSTRUCTION".
- 6. SUPERINTENDENCE**  
SPECIAL ATTENTION IS DRAWN TO ARTICLE 105.06 OF THE "STANDARD SPECIFICATIONS FOR ROAD AND BRIDGE CONSTRUCTION" WHICH REQUIRES THE CONTRACTOR TO HAVE A COMPETENT SUPERINTENDENT ON THE PROJECT SITE AT ALL TIMES, IRRESPECTIVE OF THE AMOUNT OF WORK SUBJECT. THE SUPERINTENDENT SHALL BE CAPABLE OF READING AND UNDERSTANDING THE PLANS AND SPECIFICATIONS, SHALL HAVE FULL AUTHORITY TO EXECUTE ORDERS TO EXPEDITE THE PROJECT AND SHALL BE RESPONSIBLE FOR SCHEDULING AND HAVING CONTROL OF ALL THE WORK AS THE AGENT OF THE GENERAL CONTRACTOR. FAILURE TO COMPLY WITH THIS PROVISION WILL RESULT IN A SUSPENSION OF WORK AS PROVIDED IN ARTICLE 108.07.
- 7. SAWING EXISTING IMPROVEMENTS**  
ALL PERMANENT TYPE PAVEMENTS OR OTHER PERMANENT IMPROVEMENTS WHICH ABOUT THE PROPOSED IMPROVEMENT AND MUST BE REMOVED, SHALL BE SAWED AS DIRECTED PRIOR TO REMOVAL. ALL ITEMS SO REMOVED SHALL BE REPLACED WITH SIMILAR CONSTRUCTION MATERIALS TO THEIR ORIGINAL CONDITION OR BETTER. PAYMENT FOR SAWING SHALL BE INCLUDED IN THE COST FOR THE REMOVAL OF EACH ITEM, AND REPLACEMENT WILL BE PAID FOR UNDER THE RESPECTIVE ITEMS IN THE CONTRACT UNLESS OTHERWISE INDICATED.
- 8. CONSTRUCTION LAYOUT STAKES**  
THE CONTRACTOR SHALL PROVIDE THE ENGINEER WITH WOODEN STAKES OR OTHER LAYOUT MATERIALS FOR LAYOUT OF THE LINES AND GRADES OF THE PROJECT. FAILURE TO PROVIDE STAKES IN A TIMELY MANNER WILL RESULT IN A DELAY IN STAKEOUT WHICH WILL BE APPLICABLE AGAINST THE TIME LIMIT FOR COMPLETION SHOWN IN THE PROJECT SPECIFICATIONS. LINE AND GRADE WILL BE ESTABLISHED BY THE ENGINEER AT REGULAR INTERVALS ON PERMANENTLY PAVED SURFACES, SIDEWALKS OR STAKES AT THE ENGINEER'S OPTION, ALL WITHIN THE PUBLIC RIGHT-OF-WAY AND SHALL BE TRANSFERRED BY THE CONTRACTOR TO THE ACTUAL LINE OF CONSTRUCTION.
- 9. PROJECT SAFETY**  
BARRICADES: THE CONTRACTOR SHALL PROVIDE AND INSTALL TWO (2) WEIGHTED SAND BAGS ON EACH TYPE I OR TYPE II BARRICADE USED ONE (1) WEIGHTED SAND BAG ACROSS EACH BOTTOM RAIL. WHEN MILLED PAVEMENT IS OPEN TO TRAFFIC THE MAXIMUM GRADE DIFFERENTIAL BETWEEN PASSES OF THE MILLING MACHINE SHALL NOT EXCEED 1-1/2 INCHES WHERE THE SPEED LIMIT IS 45 MPH OR LESS AND 1 INCH WHERE THE SPEED LIMIT IS GREATER THAN 45 MPH. WITH WRITTEN APPROVAL FROM THE ENGINEER, A MAXIMUM GRADE DIFFERENTIAL OF 3 INCHES MAY BE ALLOWED IF THE EDGE OF THE MILLING IS SLOPED A MINIMUM 1:3 (V:H).  
BUTT JOINTS WILL BE INSTALLED AT THE ENDS OF ALL RESURFACING (WHERE RESURFACING MEETS EXISTING PAVEMENT), IN ACCORDANCE WITH THE "BUTT JOINT AND HOT-MIX ASPHALT TAPER DETAILS" SHEET INCLUDED IN THE PLANS, UNLESS OTHERWISE SPECIFIED.  
THE CONTRACTOR SHALL COMPLY WITH AND OBSERVE THE RULES AND REGULATIONS OF O.S.H.A. AND APPROPRIATE AUTHORITIES REGARDING SAFETY PROVISIONS. THE CONTRACTOR, ENGINEER, AND OWNER SHALL EACH BE RESPONSIBLE FOR THEIR OWN RESPECTIVE AGENTS AND EMPLOYEES.  
THE ENGINEER AND OWNER ARE NOT RESPONSIBLE FOR THE CONSTRUCTION MEANS, METHODS, TECHNIQUES, SEQUENCES OR PROCEDURES, TIME OF PERFORMANCE, PROGRAMS, OR FOR ANY SAFETY PRECAUTIONS USED BY THE CONTRACTOR. THE CONTRACTOR IS SOLELY RESPONSIBLE FOR EXECUTION OF HIS WORK IN ACCORDANCE WITH THE DOCUMENTS AND SPECIFICATIONS.



**Frank Novotny & Associates, Inc.**  
Civil Engineers/  
Municipal Consultants  
825 Midway Drive ♦ Willowbrook, IL ♦ 60527 ♦ Telephone: (630) 887-8640 ♦ Fax: (630) 887-0132  
Illinois Professional Design Firm No. 184-000928

PROJECT TOWN OF CICERO, ILLINOIS  
LARAMIE AVENUE LAPP RESURFACING  
PERSHING ROAD to 35th STREET  
MFT SECTION NO. 07-00202-00-RS

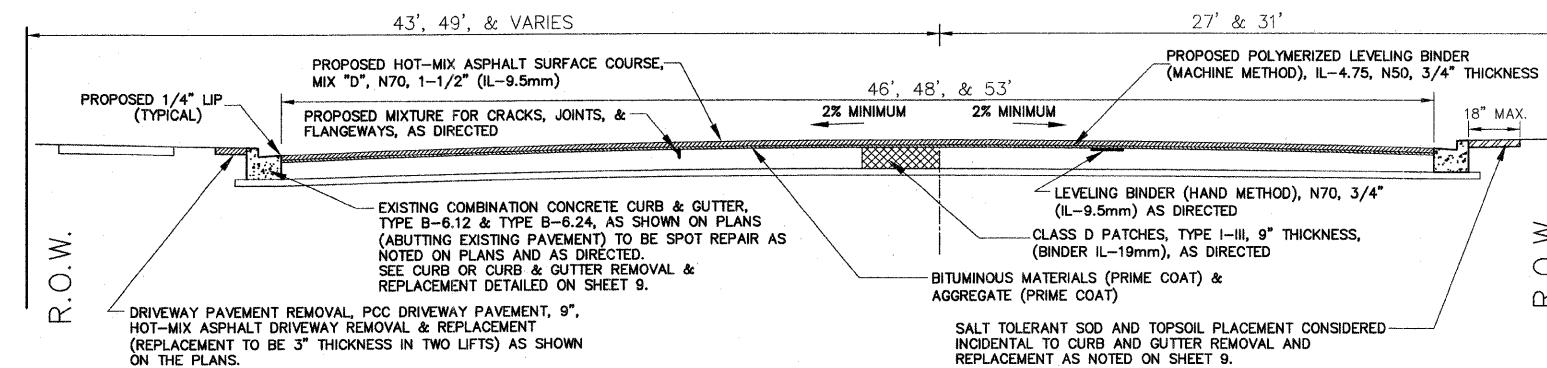
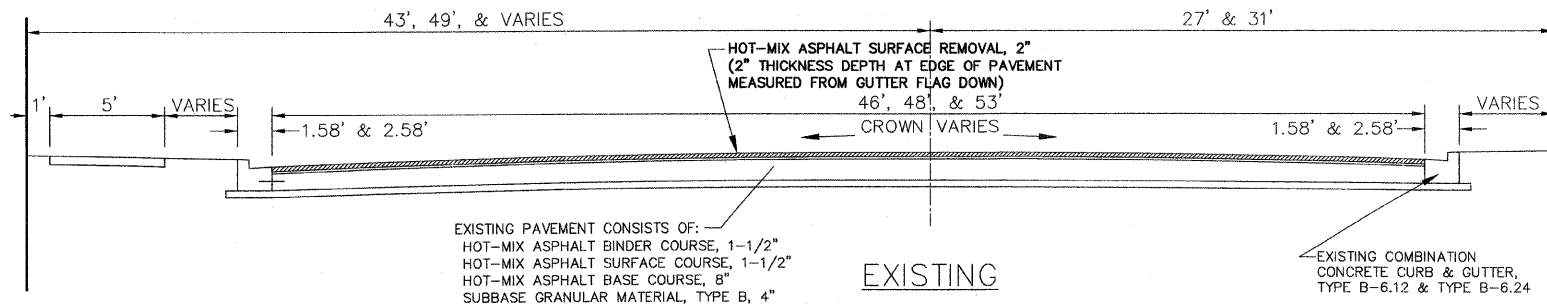
R E V I S I O N S			
NO.	BY	DATE	DESCRIPTION
1	AMS	1/10/08	DOT COMMENTS

INDEX TO SHEETS  
STATE STANDARDS  
GENERAL CONSTRUCTION NOTES

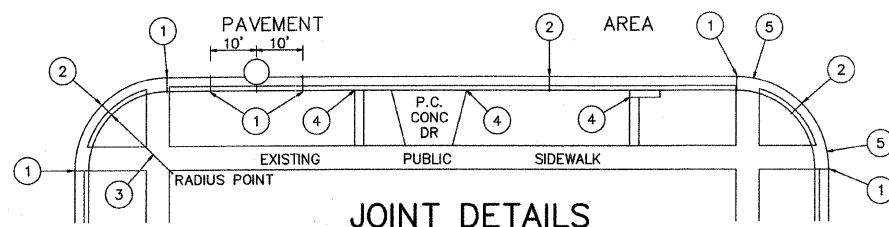
PROJECT NO. 05047	SCALE AS NOTED	SHEET 2
DRAWN/DESIGNED JFP/AMS	DATE OCT., 2007	OF 12
CHECKED/APPROVED TPG	FIELD BOOK NO. FILE	SHEETS

### SUMMARY OF QUANTITIES

CONTRACT NO. 63014



### TYPICAL CROSS SECTIONS LARAMIE AVENUE – PERSHING ROAD TO 35TH STREET



1. EXPANSION JOINTS AT TANGENT POINTS AND 150 FOOT INTERVALS, CONSISTING OF ONE INCH PREMOLDED JOINT FILLER MATERIAL WITH #8 DOWEL BARS, 18" IN LENGTH, GREASED, PROVIDE EXPANSION CAP ON ONE END. ALSO CONSTRUCT THIS JOINT TEN FEET EACH SIDE OF PROPOSED UNDERGROUND STRUCTURE.
2. CONTRACTION JOINTS AT TWENTY-FIVE FOOT INTERVALS AND AT THE CENTER OF RETURNS.
3. ALL RADII SHALL BE 25 FEET TO THE BACK OF CURB UNLESS OTHERWISE DIRECTED BY THE ENGINEER.
4. LONGITUDINAL EXPANSION JOINT CONSISTING OF ONE INCH PREMOLDED JOINT FILLER.
5. DEPRESS CURB AT LOCATIONS WHERE PUBLIC WALKS INTERSECT CURB LINE AT STREET INTERSECTIONS, ALLEYS, AND OTHER LOCATIONS AS DIRECTED, FOR THE CONSTRUCTION OF RAMPED SIDEWALKS FOR ACCESS BY THE HANDICAPPED.

ITEM NO.	DESCRIPTION	UNIT	CONSTRUCTION CODE 1000 QUANTITY
40600100	BITUMINOUS MATERIALS (PRIME COAT)	GAL.	3,160
40600300	AGGREGATE (PRIME COAT)	TON	31
40600400	MIXTURE FOR CRACKS, JOINTS AND FLANGEWAYS	TON	10
40600535	LEVELING BINDER (HAND METHOD), N70	TON	10
40600982	HOT-MIX ASPHALT SURFACE REMOVAL - BUTT JOINT	SQ YD	175
40603340	HOT-MIX ASPHALT SURFACE COURSE, MIX "D", N70	TON	1,370
42300500	PORTLAND CEMENT CONCRETE DRIVEWAY PAVEMENT, 9 INCH	SQ YD	395
42400200	PORTLAND CEMENT CONCRETE SIDEWALK, 5 INCH	SQ FT	430
42400800	DETECTABLE WARNINGS	SQ FT	60
44000157	HOT-MIX ASPHALT SURFACE REMOVAL, 2"	SQ YD	15,625
44000200	DRIVEWAY PAVEMENT REMOVAL	SQ YD	395
44000600	SIDEWALK REMOVAL	SQ FT	430
Δ 44001700	COMBINATION CONCRETE CURB AND GUTTER REMOVAL AND REPLACEMENT	FOOT	700
44201749	CLASS D PATCHES, TYPE I, 9 INCH	SQ YD	25
44201753	CLASS D PATCHES, TYPE II, 9 INCH	SQ YD	150
44201757	CLASS D PATCHES, TYPE III, 9 INCH	SQ YD	450
60250200	CATCH BASINS TO BE ADJUSTED	EACH	5
60260100	INLETS TO BE ADJUSTED	EACH	2
Δ 60300310	FRAMES AND LIDS TO BE ADJUSTED (SPECIAL)	EACH	20
60406100	FRAMES AND LIDS, TYPE 1, CLOSED LID	EACH	10
67100100	MOBILIZATION	L SUM	1
Δ 70101700	TRAFFIC CONTROL AND PROTECTION	L SUM	1
70300100	SHORT TERM PAVEMENT MARKING	FOOT	2,600
70300210	TEMPORARY PAVEMENT MARKING - LETTERS AND SYMBOLS	SQ FT	150
70300220	TEMPORARY PAVEMENT MARKING - LINE, 4"	FOOT	13,300
70300240	TEMPORARY PAVEMENT MARKING - LINE, 6"	FOOT	2,050
70300280	TEMPORARY PAVEMENT MARKING - LINE, 24"	FOOT	340
X0322152	WORK ZONE PAVEMENT MARKING REMOVAL	FOOT	1,300
* 78000100	THERMOPLASTIC PAVEMENT MARKING - LETTERS AND SYMBOLS	SQ FT	75
* 78000200	THERMOPLASTIC PAVEMENT MARKING - LINE, 4"	FOOT	6,650
* 78000400	THERMOPLASTIC PAVEMENT MARKING - LINE, 6"	FOOT	1,025
* 78000650	THERMOPLASTIC PAVEMENT MARKING - LINE, 24"	FOOT	170
* Δ 88600600	DETECTOR LOOP REPLACEMENT	FOOT	610
Δ X4067107	POLYMERIZED LEVELING BINDER (MACHINE METHOD), IL-4.75, N50	TON	655
Δ XX006947	HOT-MIX ASPHALT DRIVEWAY REMOVAL AND REPLACEMENT	SQ YD	65

\* DENOTES SPECIALITY ITEM  
Δ DENOTES SPECIAL PROVISION

### HOT-MIX ASPHALT MIXTURE REQUIREMENT

ITEM	AC TYPE	VOIDS
HOT-MIX ASPHALT SURFACE COURSE, MIX "D", N70, 1-1/2" THICKNESS (IL-9.5mm)	PG 64-22	4% @ 70 GYR
POLYMERIZED LEVELING BINDER (MACHINE METHOD), IL-4.75, N50, 3/4" THICKNESS	SBS/SBR PG 76-28/-22	4% @ 50 GYR
LEVELING BINDER (HAND METHOD), N70, 3/4" THICKNESS (IL-9.5mm)	* PG 64-22	4% @ 70 GYR
<b>DRIVEWAY:</b> HOT-MIX ASPHALT DRIVEWAY REPLACEMENT		
BASE: HOT-MIX ASPHALT SURFACE COURSE, MIX "C", IL-9.5mm, N50, 1-1/2" THICKNESS	PG 64-22	4% @ 50 GYR
SURFACE: HOT-MIX ASPHALT SURFACE COURSE, MIX "C", IL-9.5mm, N50, 1-1/2" THICKNESS	PG 64-22	4% @ 50 GYR
<b>PATCHING:</b>		
CLASS D PATCHES, TYPE I-III, 9" THICKNESS, (BINDER IL-19mm)	* PG 64-22	4% @ 70 GYR

THE UNIT WEIGHT TO CALCULATE ALL HOT-MIX ASPHALT SURFACE MIXTURE QUANTITIES IS 112 LBS/SQ YD/IN.  
\* WHEN RAP EXCEEDS 20%, THE NEW ASPHALT BINDER IN THE MIX SHALL BE PG 58-22

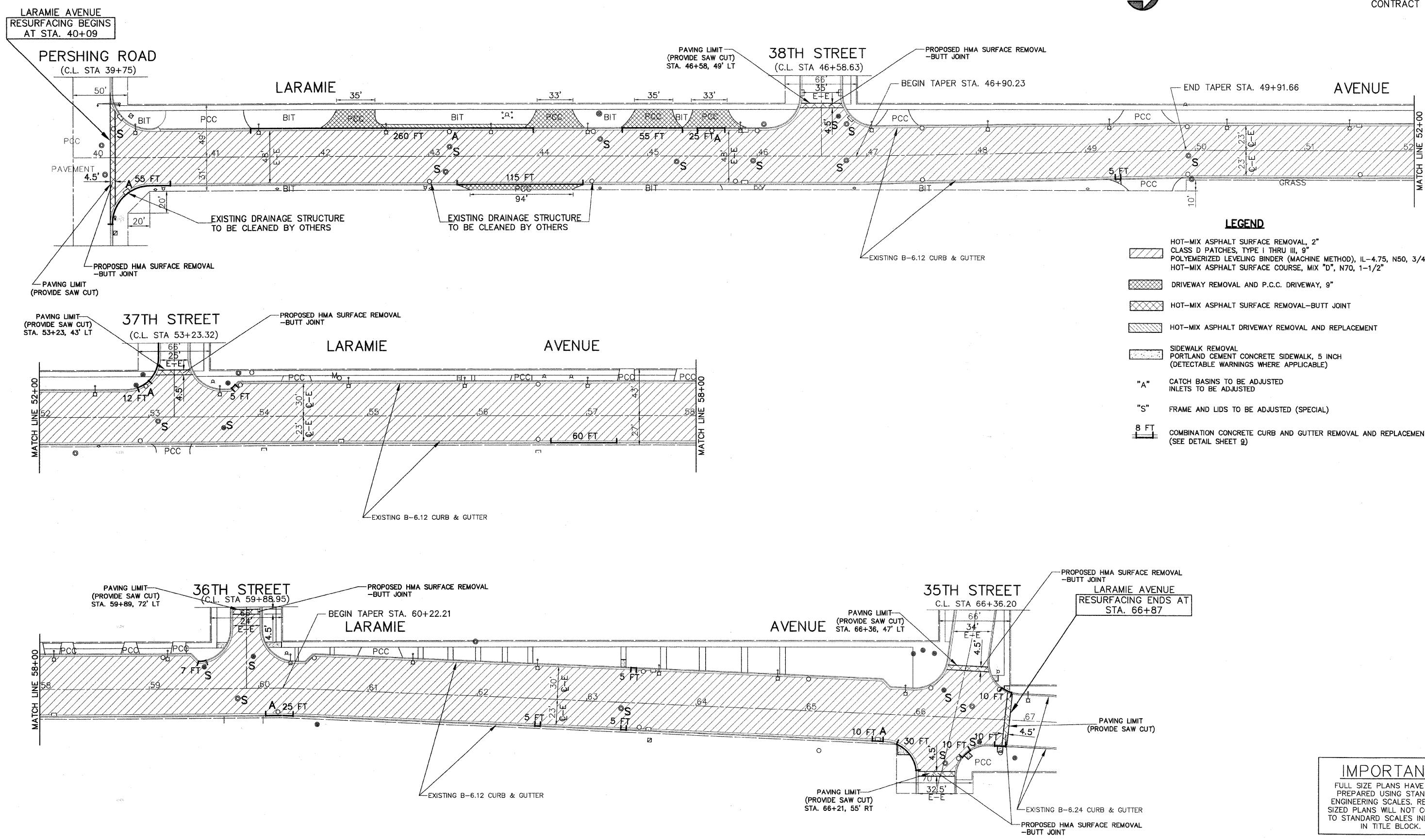
REVISIONS			
NO.	BY	DATE	DESCRIPTION
1	AMS	1/10/08	IDOT COMMENTS

TYPICAL CROSS SECTIONS  
JOINT DETAILS  
SUMMARY OF QUANTITIES  
HOT-MIX MIXTURES REQUIREMENT

PROJECT NO. 05047	SCALE AS NOTED	SHEET 3
DRAWN/DESIGNED JFP/AMS	DATE OCT., 2007	OF 12
CHECKED/APPROVED TPG	FIELD BOOK NO. FILE	SHEETS

FAU RTE	SECTION	COUNTY	TOTAL SHEETS	SHEET NO.
2803	07-00202-00-RS	COOK	12	4
F. HW. A. REG.	ILLINOIS PROJECT	M-8003(915)		

CONTRACT NO. 63014



**LEGEND**

- HOT-MIX ASPHALT SURFACE REMOVAL, 2" CLASS D PATCHES, TYPE I THRU III, 9" POLYMERIZED LEVELING BINDER (MACHINE METHOD), IL-4.75, N50, 3/4" HOT-MIX ASPHALT SURFACE COURSE, MIX "D", N70, 1-1/2"
- DRIVEWAY REMOVAL AND P.C.C. DRIVEWAY, 9"
- HOT-MIX ASPHALT SURFACE REMOVAL-BUTT JOINT
- HOT-MIX ASPHALT DRIVEWAY REMOVAL AND REPLACEMENT
- SIDEWALK REMOVAL PORTLAND CEMENT CONCRETE SIDEWALK, 5 INCH (DETECTABLE WARNINGS WHERE APPLICABLE)
- "A" CATCH BASINS TO BE ADJUSTED INLETS TO BE ADJUSTED
- "S" FRAME AND LIDS TO BE ADJUSTED (SPECIAL)
- 8 FT COMBINATION CONCRETE CURB AND GUTTER REMOVAL AND REPLACEMENT (SEE DETAIL SHEET 9)

**IMPORTANT!**  
 FULL SIZE PLANS HAVE BEEN PREPARED USING STANDARD ENGINEERING SCALES. REDUCED SIZED PLANS WILL NOT CONFORM TO STANDARD SCALES INDICATED IN TITLE BLOCK.

**Frank Novotny & Associates, Inc.**  
 Civil Engineers/Municipal Consultants  
 825 Midway Drive • Willowbrook, IL • 60527 • Telephone: (630) 887-8640 • Fax: (630) 887-0132  
 Illinois Professional Design Firm No. 184-000928

PROJECT **TOWN OF CICERO, ILLINOIS**  
**LARAMIE AVENUE LAPP RESURFACING**  
 PERSHING ROAD TO 35TH STREET  
 MFT SECTION NO. 07-00202-00-RS

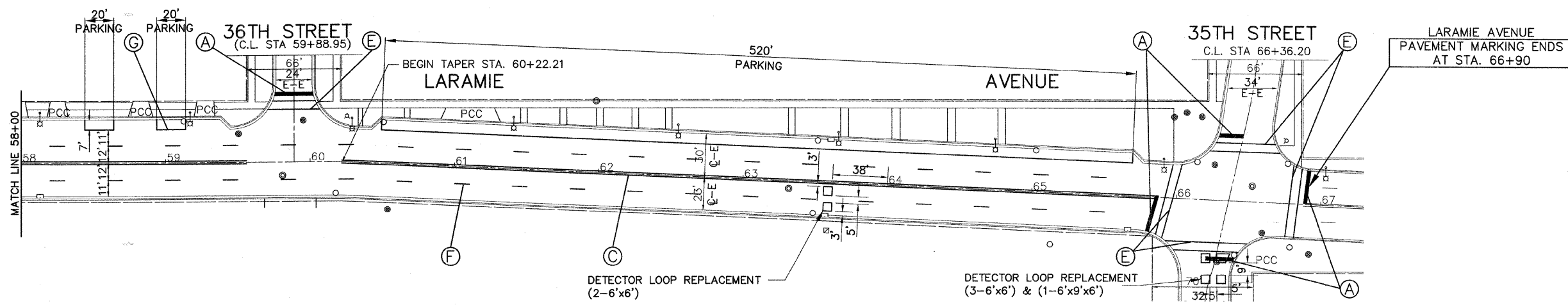
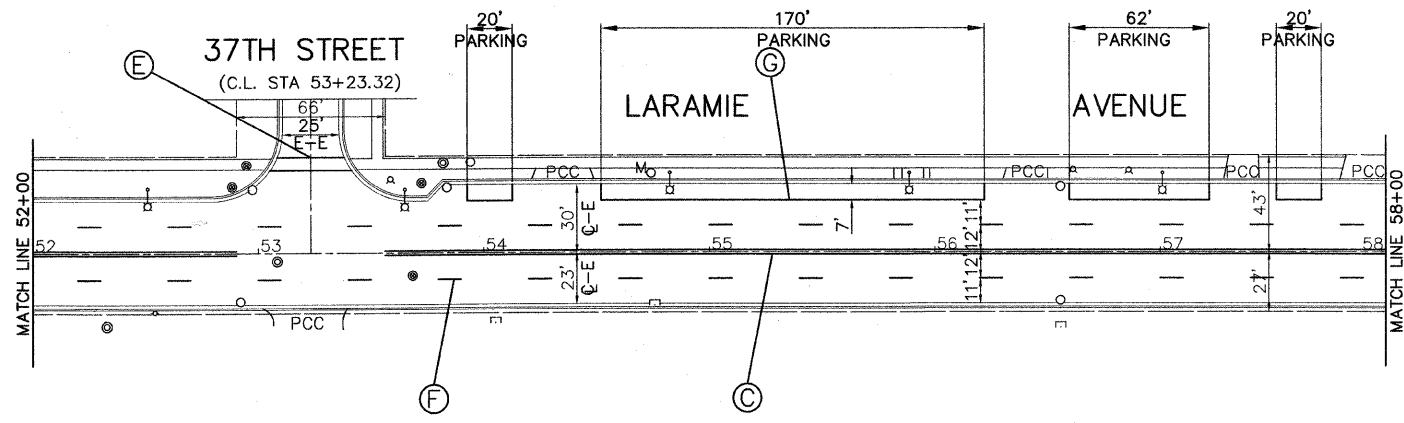
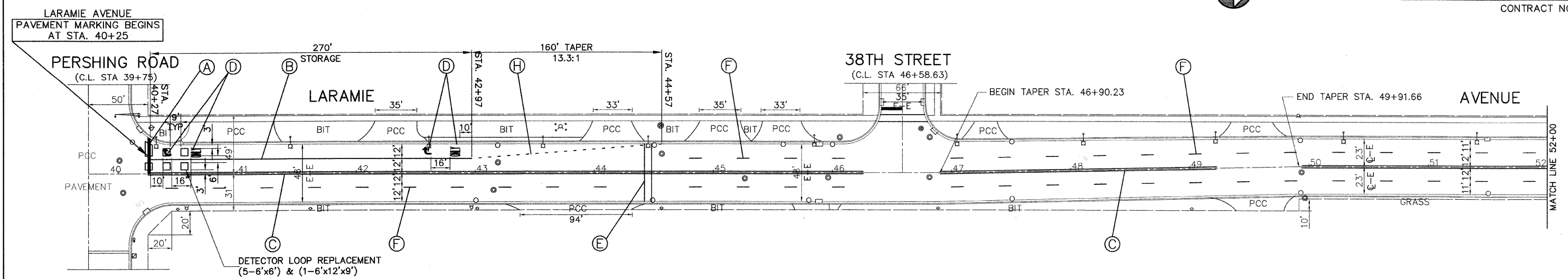
REVISIONS			
NO.	BY	DATE	DESCRIPTION
1	AMS	1/10/08	IDOT COMMENTS

**PLAN: LARAMIE AVENUE**  
 (RESURFACING)  
 PERSHING RD TO 39TH STREET

PROJECT NO. 05047	SCALE 1"=40'	SHEET 4 OF 12 SHEETS
DRAWN/DESIGNED JFP/AMS	DATE OCT., 2007	
CHECKED/APPROVED TPG	FIELD BOOK NO. FILE	

FAU RTE	SECTION	COUNTY	TOTAL SHEETS	SHEET NO.
2803	07-00202-00-RS	COOK	12	5
F. HW. A. REG.	ILLINOIS	PROJECT	M-8003(915)	

CONTRACT NO. 63014



**THERMOPLASTIC STRIPING CODE**

- (A) SOLID WHITE THERMOPLASTIC PAVEMENT MARKING - LINE 24" (STOP BAR)
- (B) SOLID WHITE THERMOPLASTIC PAVEMENT MARKING - LINE 6" (LANE LINE)
- (C) DOUBLE SOLID YELLOW THERMOPLASTIC PAVEMENT MARKING - CENTERLINE 4" , 11" O/C (CENTERLINE)
- (D) SOLID WHITE THERMOPLASTIC PAVEMENT MARKING - LETTERS & SYMBOLS
- (E) SOLID WHITE THERMOPLASTIC PAVEMENT MARKING - LINE 6" (CROSSWALK MARKING-6' SPACING)
- (F) SOLID YELLOW THERMOPLASTIC PAVEMENT MARKING - LINE 4", 10' DASH, 30' SKIP (LANE LINE)
- (G) SOLID WHITE THERMOPLASTIC PAVEMENT MARKING - LINE 4" (PARKING LINE)
- (H) SOLID WHITE THERMOPLASTIC PAVEMENT MARKING - LINE 6", 2' DASH 6' SKIP

**IMPORTANT!**  
 FULL SIZE PLANS HAVE BEEN PREPARED USING STANDARD ENGINEERING SCALES. REDUCED SIZED PLANS WILL NOT CONFORM TO STANDARD SCALES INDICATED IN TITLE BLOCK.

**Frank Novotny & Associates, Inc.**  
 Civil Engineers/  
 Municipal Consultants  
 825 Midway Drive • Willowbrook, IL • 60527 • Telephone: (630) 887-8640 • Fax: (630) 887-0132  
 Illinois Professional Design Firm No. 184-000928

PROJECT  
**TOWN OF CICERO, ILLINOIS**  
**LARAMIE AVENUE LAPP RESURFACING**  
 PERSHING ROAD TO 35TH STREET  
 MFT SECTION NO. 07-00202-00-RS

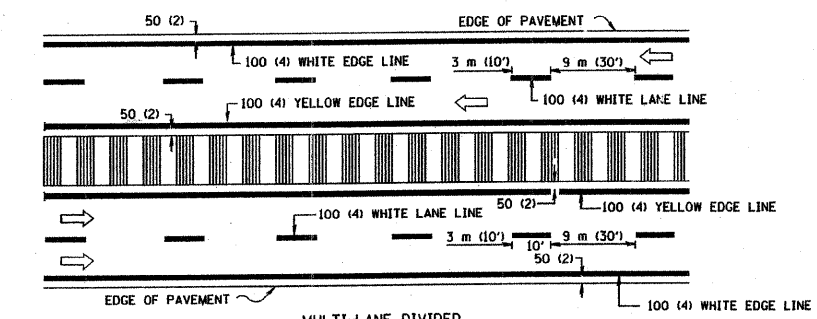
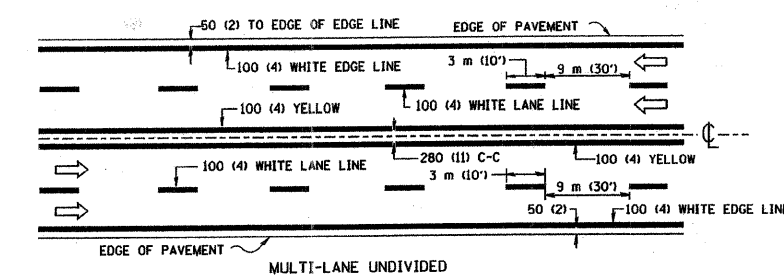
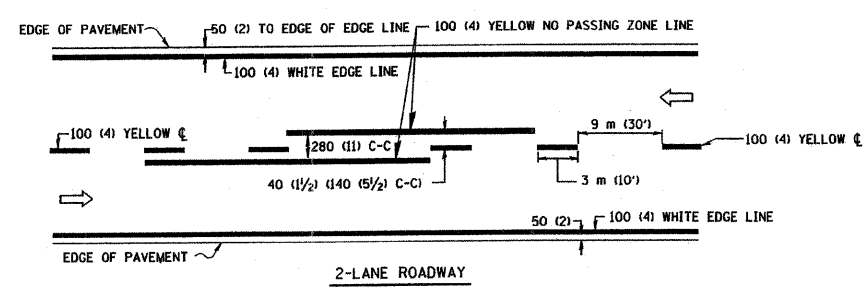
REVISIONS			
NO.	BY	DATE	DESCRIPTION
1	AMS	1/10/08	DETECTOR LOOP NOTATION ADDED

PLAN: **LARAMIE AVENUE**  
 (PAVEMENT MARKING)  
 PERSHING RD TO 39TH STREET

PROJECT NO. 05047	SCALE 1"=40'	SHEET 5
DRAWN/DESIGNED JFP/AMS	DATE OCT., 2007	OF 12
CHECKED/APPROVED TPG	FIELD BOOK NO. FILE	SHEETS

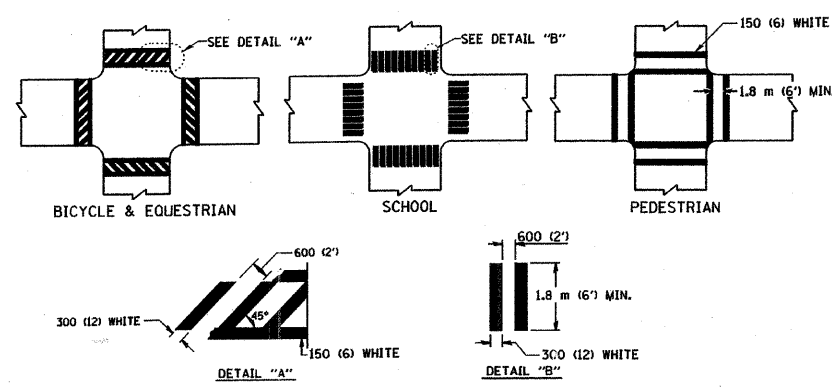


FAU RTE	SECTION	COUNTY	TOTAL SHEETS	SHEET NO.
2803	07-00202-00-RS	COOK	12	6
F. HW. A. REG.	ILLINOIS PROJECT	M-8003(915)	CONTRACT NO. 63014	

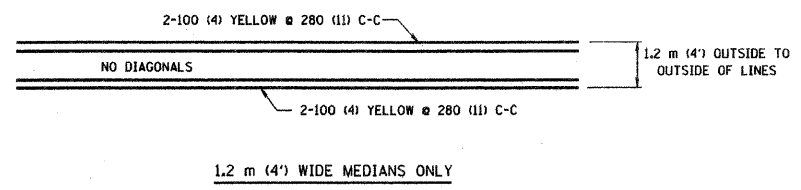


NOTE: MEDIANS WITH BARRIER CURB DO NOT REQUIRE AN EDGE LINE

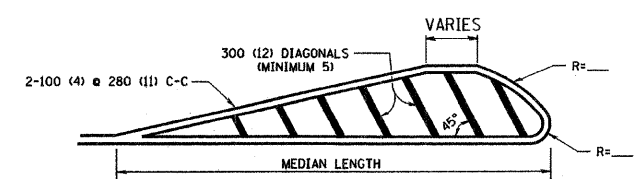
**TYPICAL LANE AND EDGE LINE MARKING**



**TYPICAL CROSSWALK MARKING**



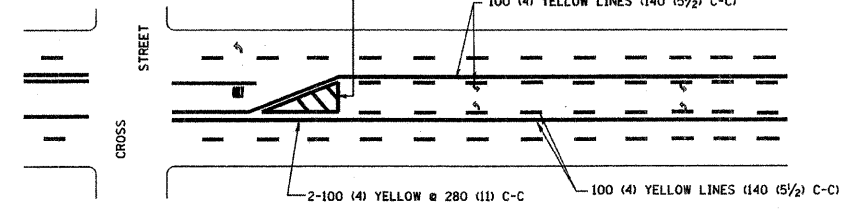
**1.2 m (4') WIDE MEDIANS ONLY**



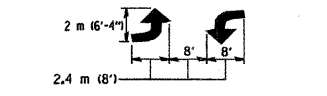
FOR MEDIAN LENGTHS WHERE DIAGONAL SPACING CANNOT BE ATTAINED, USE 5 (FIVE) EQUALLY SPACED DIAGONAL LINES.

DIAGONAL LINE SPACING: 15 m (50') C-C (LESS THAN 50 km/h (30 MPH))  
 25 m (75') C-C (50 km/h (30 MPH) TO 70 km/h (45 MPH))  
 45 m (150') C-C (MORE THAN 70 km/h (45 MPH))

**MEDIANS OVER 1.2 m (4') WIDE**

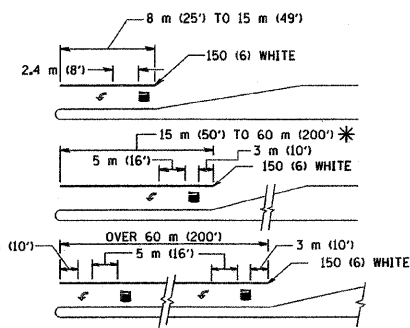


A MINIMUM OF TWO PAIRS OF TURN ARROWS SHALL BE USED, WHITE IN COLOR. ADDITIONAL PAIRS SHALL BE PLACED AT 60 m (200') TO 90 m (300') INTERVALS.



**MEDIAN WITH TWO-WAY LEFT TURN LANE**

**TYPICAL PAINTED MEDIAN MARKING**

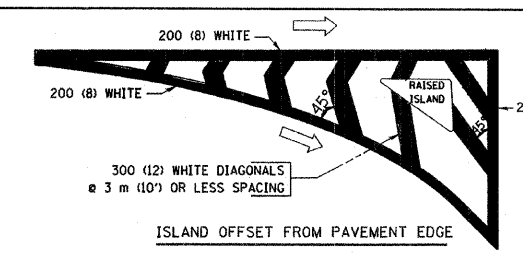


FULL SIZE LETTERS 2.4 m (8') AND ARROWS SHALL BE USED.  
 AREA = 1.5 m<sup>2</sup> (15.6 SQ. FT.) ONLY AREA = 1.9 m<sup>2</sup> (20.8 SQ. FT.)

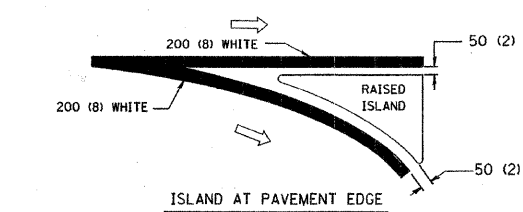
\* TURN LANES IN EXCESS OF 120 m (400') IN LENGTH MAY HAVE AN ADDITIONAL SET OF ARROW - "ONLY" INSTALLED MIDWAY BETWEEN THE OTHER TWO SETS OF ARROW - "ONLY".

**TYPICAL LEFT (OR RIGHT) TURN LANE**

**TYPICAL TURN LANE MARKING**



**ISLAND OFFSET FROM PAVEMENT EDGE**



**ISLAND AT PAVEMENT EDGE**

**TYPICAL ISLAND MARKING**

TYPE OF MARKING	WIDTH OF LINE	PATTERN	COLOR	SPACING / REMARKS
CENTERLINE ON 2 LANE PAVEMENT	100 (4)	SKIP-DASH	YELLOW	3 m (10') LINE WITH 9 m (30') SPACE
CENTERLINE ON MULTI-LANE UNDIVIDED PAVEMENT	2 @ 100 (4)	SOLID	YELLOW	280 (11) C-C
NO PASSING ZONE LINES FOR ONE DIRECTION	100 (4)	SOLID	YELLOW	140 (5 1/2) C-C FROM SKIP-DASH CENTERLINE
NO PASSING ZONE LINES FOR BOTH DIRECTIONS	2 @ 100 (4)	SOLID	YELLOW	280 (11) C-C OMIT SKIP-DASH CENTERLINE BETWEEN
LANE LINES	100 (4) 125 (5) ON FREEWAYS	SKIP-DASH SKIP-DASH	WHITE WHITE	3 m (10') LINE WITH 9 m (30') SPACE
DOTTED LINES (EXTENSIONS OF CENTER, LANE OR TURN LANE MARKINGS)	SAME AS LINE BEING EXTENDED	SKIP-DASH	SAME AS LINE BEING EXTENDED	600 (2') LINE WITH 1.8 m (6') SPACE
EDGE LINES	100 (4)	SOLID	YELLOW-LEFT WHITE-RIGHT	OUTLINE MOUNTABLE MEDIANS IN YELLOW; EDGE LINES ARE NOT USED NEXT TO BARRIER CURB
TURN LANE MARKINGS	150 (6) LINE; FULL SIZE LETTERS & SYMBOLS (2.4 m (8'))	SOLID	WHITE	SEE TYPICAL TURN LANE MARKING DETAIL
TWO WAY LEFT TURN MARKING	2 @ 100 (4) EACH DIRECTION 2.4 m (8') LEFT ARROW	SKIP-DASH AND SOLID IN PAIRS	YELLOW WHITE	3 m (10') LINE WITH 9 m (30') SPACE FOR SKIP-DASH; 140 (5 1/2) C-C BETWEEN SOLID LINE AND SKIP-DASH LINE SEE TYPICAL TWO-WAY LEFT TURN MARKING DETAIL
CROSSWALK LINES (PEDESTRIAN) A. DIAGONALS (BIKE & EQUESTRIAN) B. LONGITUDINAL BARS (SCHOOL)	2 @ 150 (6) 300 (12) @ 45° 300 (12) @ 90°	SOLID SOLID SOLID	WHITE WHITE WHITE	NOT LESS THAN 1.8 m (6') APART 600 (2') APART 600 (2') APART SEE TYPICAL CROSSWALK MARKING DETAILS.
STOP LINES	600 (24)	SOLID	WHITE	PLACE 1.2 m (4') IN ADVANCE OF AND PARALLEL TO CROSSWALK, IF PRESENT. OTHERWISE, PLACE AT DESIRED STOPPING POINT, PARALLEL TO CROSSROAD CENTERLINE, WHERE POSSIBLE
PAINTED MEDIANS	2 @ 100 (4) WITH 300 (12) DIAGONALS @ 45° NO DIAGONALS USED FOR 1.2 m (4') WIDE MEDIANS	SOLID	YELLOW; TWO WAY TRAFFIC WHITE; ONE WAY TRAFFIC	280 (11) C-C FOR THE DOUBLE LINE SEE TYPICAL PAINTED MEDIAN MARKING.
CORE MARKING AND CHANNELIZING LINES	200 (8) WITH 300 (12) DIAGONALS @ 45°	SOLID	WHITE	DIAGONALS: 4.5 m (15') C-C (LESS THAN 50 km/h (30 MPH)) 6 m (20') C-C (50 km/h (30 MPH) TO 70 km/h (45 MPH)) 9 m (30') C-C (OVER 70 km/h (45 MPH))
RAILROAD CROSSING	600 (24) TRANSVERSE LINES; "RR" IS 1.8 m (6') LETTERS; 400 (16) LINE FOR "X"	SOLID	WHITE	SEE STATE STANDARD 780001 AREA OF: "R"=0.33m <sup>2</sup> (3.6 SQ. FT.) EACH "X"=5.0 m <sup>2</sup> (54.0 SQ. FT.)
SHOULDER DIAGONALS	300 (12) @ 45°	SOLID	WHITE - RIGHT YELLOW - LEFT	15 m (50') C-C (LESS THAN 50 km/h (30 MPH)) 25 m (75') C-C (50 km/h (30 MPH) TO 70 km/h (45 MPH)) 45 m (150') C-C (OVER 70 km/h (45 MPH))

FOR FURTHER DETAILS ON PAVEMENT MARKING REFER TO STANDARD SPECIFICATIONS FOR ROAD AND BRIDGE CONSTRUCTION AND STATE STANDARD 780001.

	LARGE SIZE	SMALL SIZE
THROUGH ARROW	1.07 (11.5)	0.60 (6.5)
LEFT OF RIGHT ARROW	1.47 (15.6)	0.60 (6.5)
COMBINATION LEFT (RIGHT) AND THROUGH ARROW	2.42 (26.0)	1.37 (14.7)
RAILROAD "R"	0.33 (3.6)	-
RAILROAD "X"	5.02(54.0)	-
HANDICAPPED SYMBOL	0.43 (4.6)	-

REVISIONS	
NAME	DATE
EVERS	03-19-90
T. RAMMACHER	10-27-94
ALEX HOUSEH	10-09-96
ALEX HOUSEH	10-17-96
T. RAMMACHER	01-06-00

All dimensions are in millimeters (inches) unless otherwise shown.

ILLINOIS DEPARTMENT OF TRANSPORTATION

DISTRICT ONE  
TYPICAL PAVEMENT MARKINGS

SCALE: NONE  
DATE: 2/15/2006

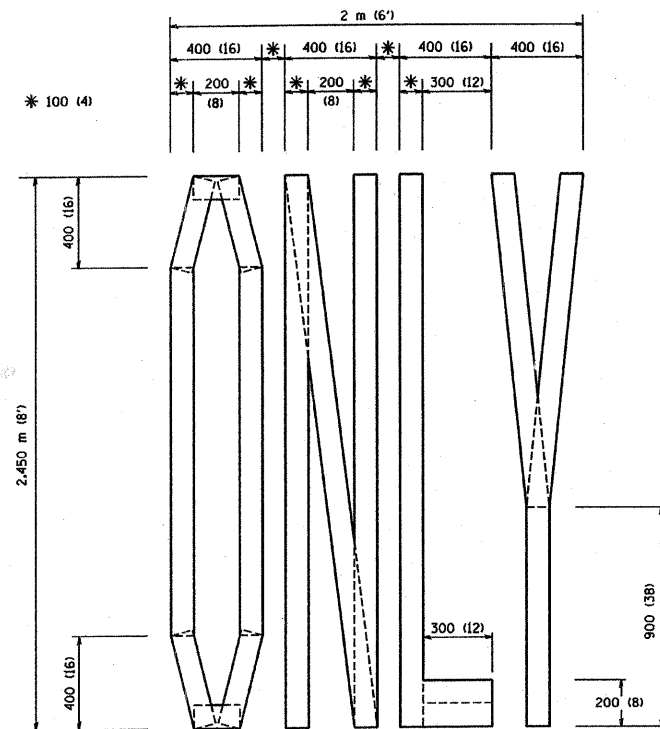
DRAWN BY CADD  
CHECKED BY  
TC-13  
REVISION DATE: 01/06/00

DATE: 2/15/2006  
FILE NAME: c:\projects\distone\13.dgn  
PLOT SCALE: 66.6667 / IN.  
USER NAME: greglambert

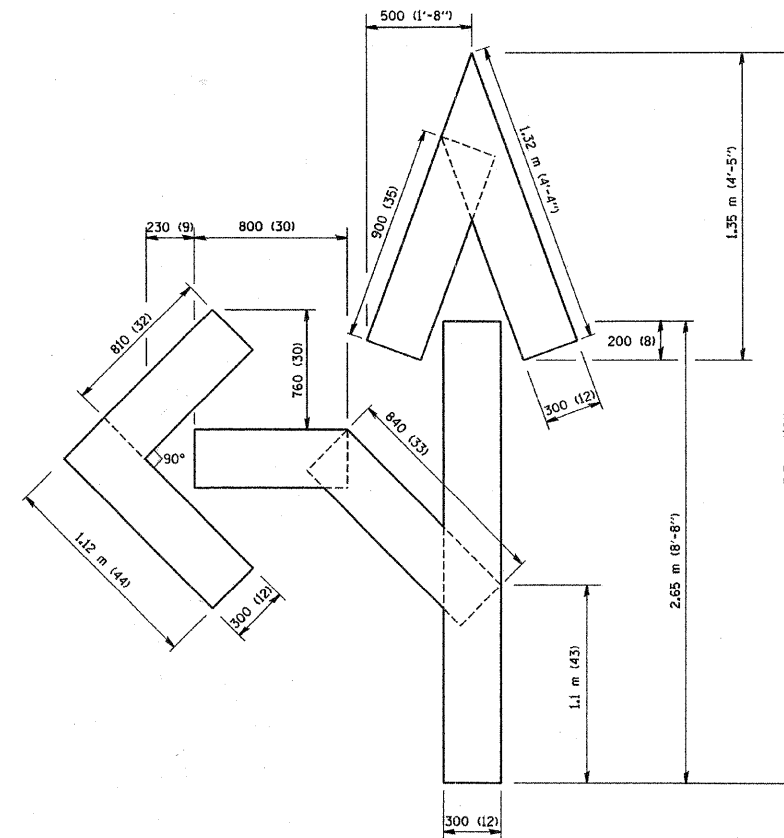
REVISIONS			
NO.	BY	DATE	DESCRIPTION

FAU RTE	SECTION	COUNTY	TOTAL SHEETS	SHEET NO.
2803	07-00202-00-RS	COOK	12	7
F. HW. A. REG.		ILLINOIS PROJECT	M-8003(915)	

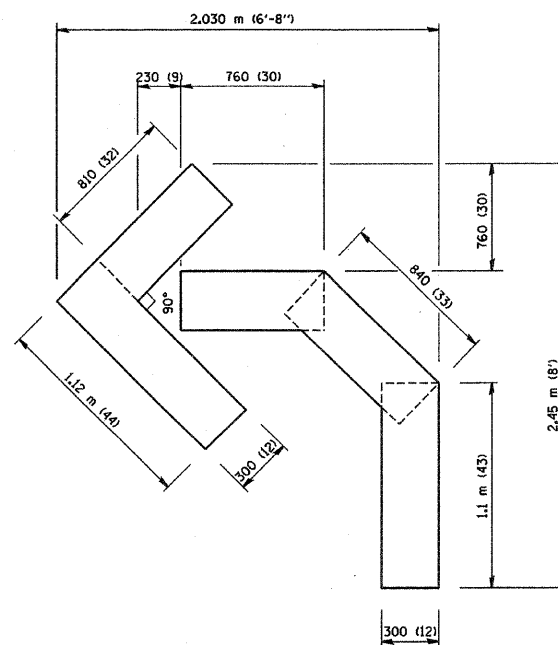
CONTRACT NO. 63014



QUANTITY  
100 (4) LINE = 19.7 m (64.1 ft.)  
1.97 sq. m (21.1 sq. ft.)



QUANTITY  
100 (4) LINE = 25.3 m (82.5 ft.)  
2.53 sq. m (27.5 sq. ft.)



QUANTITY  
100 (4) LINE = 13.9 m (45.5 ft.)  
1.39 sq. m (15.2 sq. ft.)

All dimensions are in millimeters (inches) unless otherwise shown.

REVISIONS	
NAME	DATE
T. RAMMACHER	09/18/94
J. OBERLE	06/01/96
T. RAMMACHER	06/05/96
T. RAMMACHER	11/04/97
T. RAMMACHER	03/02/98
E. GOMEZ	08/28/00

ILLINOIS DEPARTMENT OF TRANSPORTATION

PAVEMENT MARKING  
LETTERS AND SYMBOLS  
FOR TRAFFIC STAGING

SCALE: NONE  
DATE: 2/15/2006

DRAWN BY CADD  
CHECKED BY TC-16

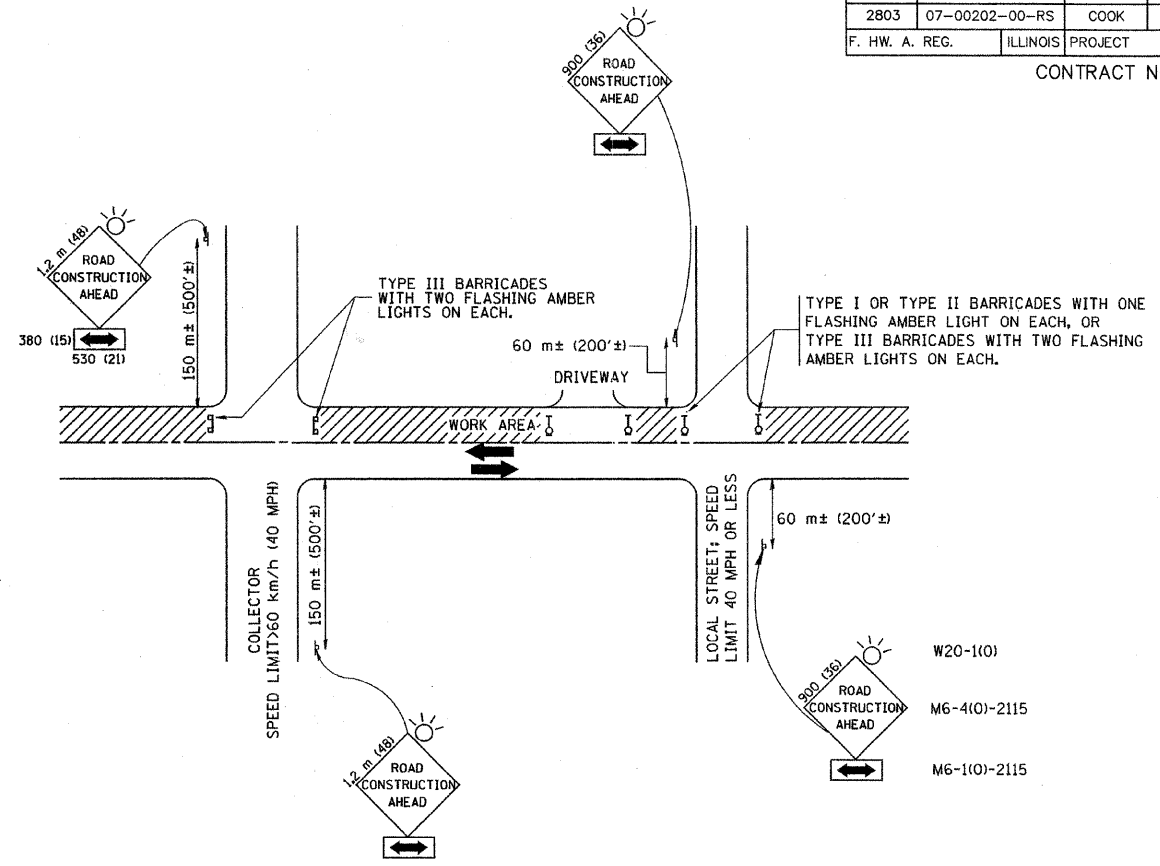
REVISION DATE: 08/28/00

PLOT DATE = 2/15/2006  
FILE NAME = w:\data\2006\16.dgn  
PLOT SCALE = 1/8" = 1'-0" / 1/4" = 1'-0"  
PLOT NUMBER = 001

REVISIONS			
NO.	BY	DATE	DESCRIPTION

FAU RTE	SECTION	COUNTY	TOTAL SHEETS	SHEET NO.
2803	07-00202-00-RS	COOK	12	8
F. HW. A. REG.	ILLINOIS PROJECT	M-8003(915)		

CONTRACT NO. 63014



TRAFFIC CONTROL AND PROTECTION FOR SIDE ROADS, INTERSECTIONS, AND DRIVEWAYS

NOTES:

- A. FOR NO LANE RESTRICTION ON THE SIDE ROAD OR DRIVEWAYS
- SIDE ROAD WITH A SPEED LIMIT OF 60 km/h (40 MPH) OR LESS AS SHOWN ON THE DRAWING AND AS DIRECTED BY THE ENGINEER:
    - ONE ROAD CONSTRUCTION AHEAD SIGN 900x900 (36x36) WITH A FLASHER AND FLAG MOUNTED ON IT APPROXIMATELY 60 m (200') IN ADVANCE OF THE MAIN ROUTE.
    - THE CLOSED PORTION OF THE MAIN ROUTE SHALL BE PROTECTED BY BLOCKING WITH TYPE I, TYPE II OR TYPE III BARRICADES, 1/3 OF THE CROSS SECTION OF THE CLOSED PORTION.
  - SIDE ROAD WITH A SPEED LIMIT GREATER THAN 60 km/h (40 MPH) AS SHOWN ON THE DRAWING AND AS DIRECTED BY THE ENGINEER:
    - ONE ROAD CONSTRUCTION AHEAD SIGN 1.2 m x 1.2 m (48x48) WITH A FLASHER MOUNTED ON IT APPROXIMATELY 150 m (500') IN ADVANCE OF THE MAIN ROUTE.
    - THE CLOSED PORTION OF THE MAIN ROUTE SHALL BE PROTECTED BY BLOCKING WITH TYPE III BARRICADES, 1/2 OF THE CROSS SECTION OF THE CLOSED PORTION.
  - WHEN THE SIDE ROAD LIES BETWEEN THE BEGINNING OF THE MAINLINE SIGNING AND THE WORK ZONE, A SINGLE HEADED ARROW (M6-1) SHALL BE USED IN LIEU OF THE DOUBLE HEADED ARROW (M6-4).
- B. FOR A LANE CLOSURE ON A SIDE ROAD OR DRIVEWAY:
- USE APPLICABLE PORTIONS OF THE TYPICAL APPLICATION OF TRAFFIC CONTROL DEVICES (STD. 701501, STD. 701606 OR THE APPROPRIATE STANDARD). THE SPACING OF SIGNS AND BARRICADES SHALL BE ADJUSTED FOR FIELD CONDITIONS AS DIRECTED BY THE ENGINEER. THE DIRECTIONAL ARROW SHALL BE COVERED OR REMOVED WHEN NO LONGER CONSISTENT WITH THE SIDE ROAD LANE CLOSURE.
- C. ADVANCE WARNING SIGNS ARE TO BE OMITTED ON DRIVEWAY UNLESS OTHERWISE NOTED.
- D. THE TRAFFIC CONTROL AND PROTECTION FOR SIDE ROADS, INTERSECTIONS, AND DRIVEWAYS SHALL BE INCIDENTAL TO THE COST OF SPECIFIED TRAFFIC CONTROL STANDARDS OR ITEMS.

REVISIONS		ILLINOIS DEPARTMENT OF TRANSPORTATION TRAFFIC CONTROL AND PROTECTION FOR SIDE ROADS, INTERSECTIONS, AND DRIVEWAYS
NAME	DATE	
LHA	6/89	
T. RAMMACHER	09/08/94	
J. OBERLE	10/18/95	
A. HOUSEH	03/06/96	
A. HOUSEH	10/15/96	
T. RAMMACHER	01/06/00	
SCALE:		DRAWN BY
DATE: 2/15/2006		CHECKED BY
		TC-10
		REVISION DATE: 01/06/00

PLOT DATE = 2/15/2006  
 PLOT SCALE = 1/8"=1'-0"  
 USER NAME = gsp11000

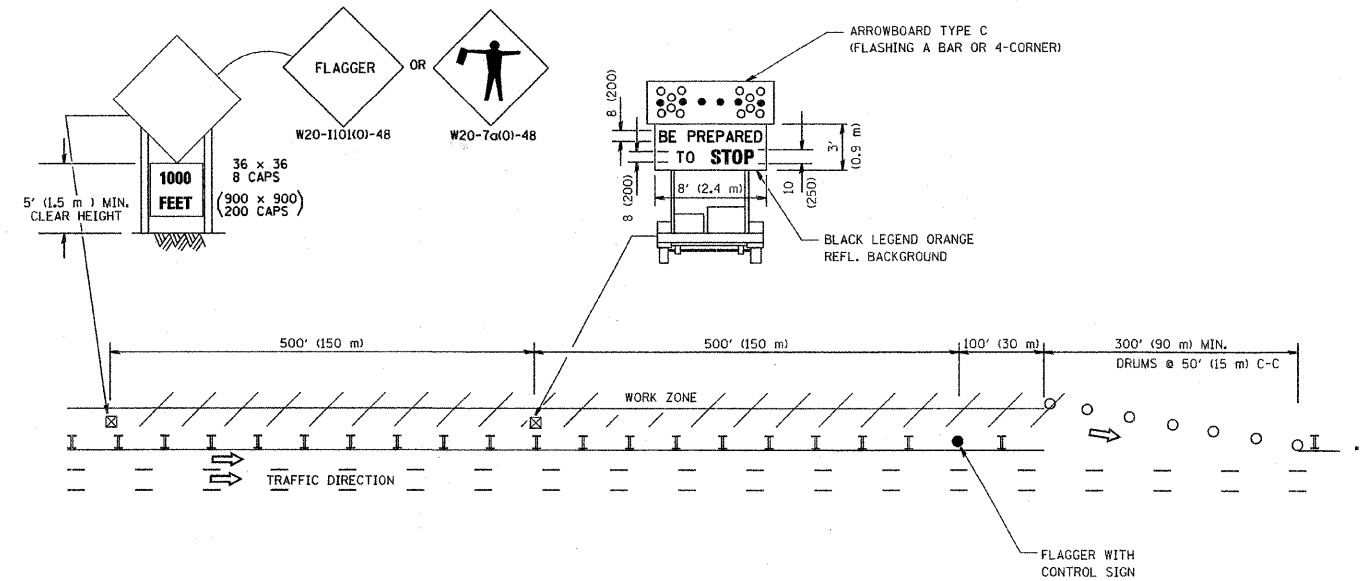
REVISIONS			
NO.	BY	DATE	DESCRIPTION



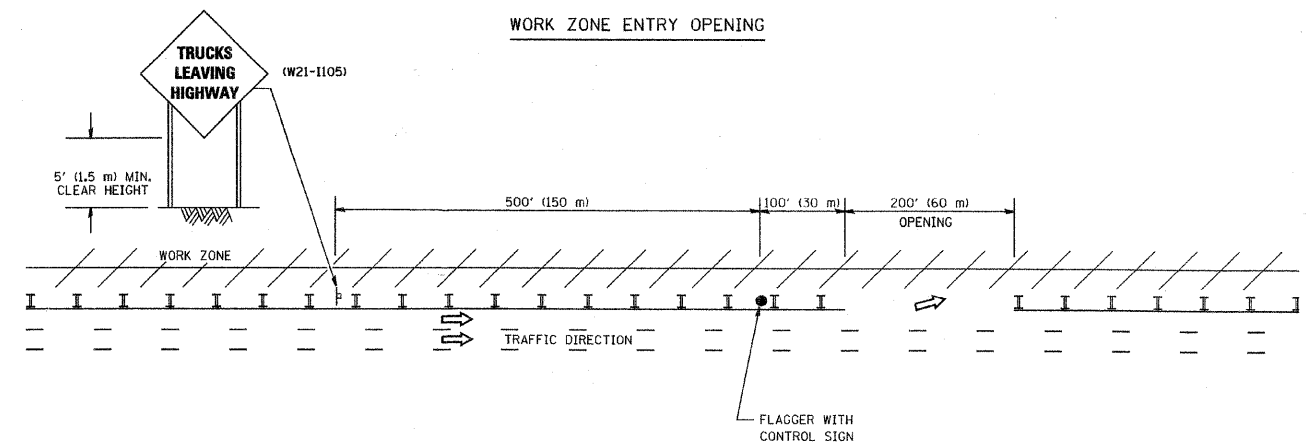
SIGNING FOR FLAGGING OPERATIONS AT WORK ZONE OPENINGS

FAU RTE	SECTION	COUNTY	TOTAL SHEETS	SHEET NO.
2803	07-00202-00-RS	COOK	12	9
F. HW. A. REG.	ILLINOIS PROJECT	M-8003(915)	CONTRACT NO. 63014	

WORK ZONE EXIT OPENING



WORK ZONE ENTRY OPENING



NOTES:

1. The Arrowboard, the Flagger Ahead trailer mounted sign, and the Trucks Leaving Highway sign shall be removed or turned away from traffic and the exit and entry openings shall be closed when the flagging operation ceases.
2. Work Zone Exit Openings should be a minimum of one half mile apart.
3. Exiting the work zone at any place other than at a Work Zone Exit Opening will be prohibited.
4. All vehicles shall enter the work zone at entry openings, using their turn signals to warn motorists

ALL DIMENSIONS ARE IN INCHES (MILLIMETERS) UNLESS OTHERWISE SHOWN

REVISIONS	
NO.	DATE

ILLINOIS DEPARTMENT OF TRANSPORTATION  
SIGNING FOR FLAGGING OPERATIONS AT WORK ZONE OPENINGS

SCALE: NONE  
DATE: 1/4/2007

DRAWN BY CADD  
CHECKED BY TC-18

REVISION DATE: 01/01/07

PLOT DATE: 1/4/2007  
FILE NAME: c:\projects\110000\110000.dwg  
PLOT SCALE: 1/8"=1'-0"  
USER NAME: thamer

**Frank Novotny & Associates, Inc.**  
Civil Engineers/Municipal Consultants  
825 Midway Drive • Willowbrook, IL • 60527 • Telephone: (630) 887-8640 • Fax: (630) 887-0132  
Illinois Professional Design Firm No. 184-000928

PROJECT: TOWN OF CICERO, ILLINOIS  
LARAMIE AVENUE LAPP RESURFACING  
PERSHING ROAD to 35th STREET  
MFT SECTION NO. 07-00202-00-RS

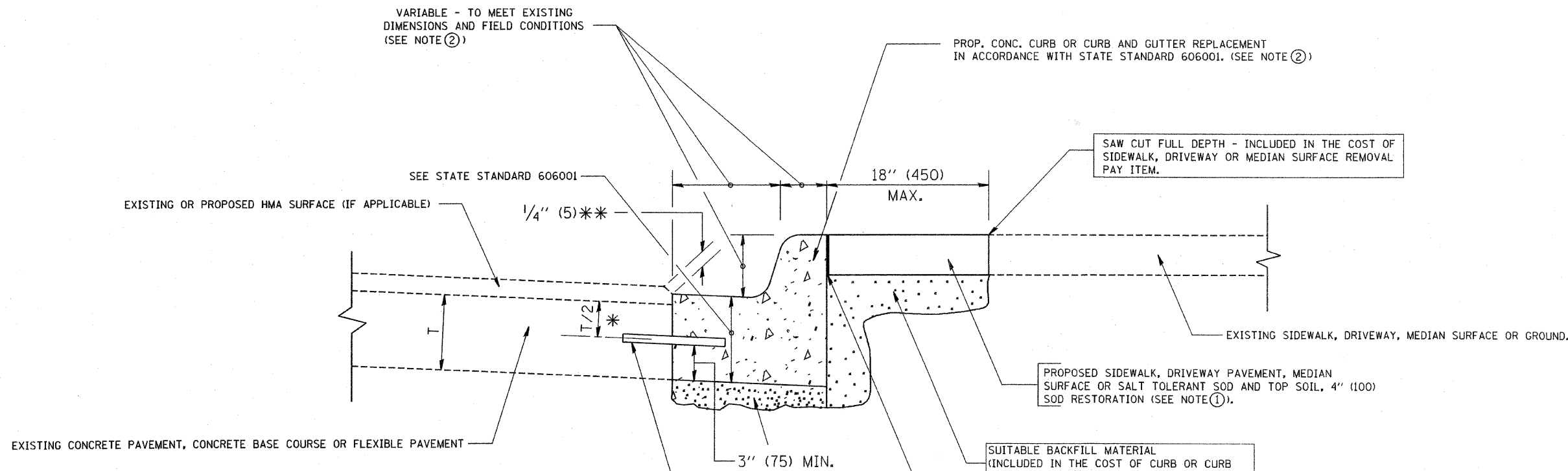
REVISIONS			
NO.	BY	DATE	DESCRIPTION

SIGNING FOR FLAGGING OPERATIONS AT WORK ZONE OPENINGS

PROJECT NO. 05047	SCALE NONE	SHEET 9
DRAWN/DESIGNED JFP/AMS	DATE OCT., 2007	OF 12
CHECKED/APPROVED TPG	FIELD BOOK NO. FILE	SHEETS

FAU RTE	SECTION	COUNTY	TOTAL SHEETS	SHEET NO.
2803	07-00202-00-RS	COOK	12	10
F. HW. A. REG.	ILLINOIS PROJECT	M-8003(915)		

CONTRACT NO. 63014



- \* 3" (75) MINIMUM FROM TOP AND BOTTOM OF THE CONCRETE PAVEMENT OR BASE COURSE.
  - \* \* IF THE FINAL SURFACE OF THE PAVEMENT IS CONCRETE, THE GUTTER IS TO BE FLUSH WITH THE PAVEMENT.
- NOTE: ① SIDEWALK, DRIVEWAY PAVEMENT OR MEDIAN SURFACE SHALL BE SIMILAR TO THE MATERIAL BEING REMOVED AND WILL BE PAID FOR SEPARATELY.
- SALT TOLERANT SOD AND TOP SOIL, 4" (100) RESTORATION WILL NOT BE PAID FOR SEPARATELY, BUT SHALL BE INCLUDED IN THE COST OF CURB OR CURB AND GUTTER REMOVAL AND REPLACEMENT.
- ② CURB OR CURB AND GUTTER REPLACEMENT SHALL MATCH THE SHAPE OF THE EXISTING CURB OR CURB AND GUTTER UNLESS OTHERWISE SPECIFIED.
  - ③ FOR CURB OR CURB AND GUTTER REMOVAL AND REPLACEMENT ADJACENT TO FLEXIBLE PAVEMENT DELETE EPOXY COATED TIE BARS.
  - ④ LONGITUDINAL BARS, IF ENCOUNTERED IN THE EXISTING CURB OR CURB AND GUTTER, ARE NOT TO BE REPLACED. CUTTING AND REMOVING LONGITUDINAL BARS SHALL BE INCLUDED IN THE COST OF CURB OR CURB AND GUTTER REMOVAL AND REPLACEMENT.
  - ⑤ THE COST OF HMA SURFACE REMOVAL IN THE EXISTING GUTTER FLAG SHALL BE INCLUDED IN THE COST OF THE CURB AND GUTTER REMOVAL AND REPLACEMENT.
  - ⑥ THE REMOVAL AND REPLACEMENT OF THE EXISTING CURB OR CURB AND GUTTER SHALL BE DONE IN ACCORDANCE WITH THE APPLICABLE PORTIONS OF SECTION 440 AND 606 OF THE STANDARD SPECIFICATIONS.
  - ⑦ THE LOCATIONS OF REMOVAL AND REPLACEMENT OF EXISTING CURB OR CURB AND GUTTER SHALL BE DETERMINED BY THE RESIDENT ENGINEER AT THE TIME OF CONSTRUCTION.

UNSUITABLE SUB-BASE MATERIAL TO BE REMOVED, IF DIRECTED BY THE ENGINEER, SHALL BE REPLACED WITH EITHER SUB-BASE GRANULAR MATERIAL, TYPE B OR ADDITIONAL THICKNESS OF CONCRETE.

REMOVAL AND REPLACEMENT 4" (100) OR LESS IS INCLUDED IN THE COST OF CURB OR CURB AND GUTTER REMOVAL AND REPLACEMENT.

REMOVAL AND REPLACEMENT IN EXCESS OF 4" (100) WILL BE PAID FOR IN ACCORDANCE WITH ARTICLE 109.04 OF THE STANDARD SPECIFICATIONS.

PROPOSED #6 (20) EPOXY COATED TIE BARS 24" (600) LONG AT 24" (600) CENTERS WILL NOT BE PAID FOR SEPARATELY. DELETE EPOXY COATED TIE BARS IF EXISTING TIE BARS ARE USUABLE AS DETERMINED BY THE ENGINEER. (SEE NOTE ③).

**BASIS OF PAYMENT:**  
THIS WORK WILL BE PAID FOR AT THE CONTRACT UNIT PRICE PER FOOT (METER) FOR "CURB REMOVAL AND REPLACEMENT" OR "COMBINATION CONCRETE CURB AND GUTTER REMOVAL AND REPLACEMENT".

ALL DIMENSIONS ARE IN INCHES (MILLIMETERS) UNLESS OTHERWISE SHOWN.

REVISIONS		NAME	DATE
NO.	BY		
		A. HOUSER	03/11/94
		R. SHAH	02/24/96
		R. SHAH	03/02/96
		R. SHAH	08/19/96
		R. SHAH	09/12/96
		R. SHAH	09/19/96
		R. SHAH	10/03/96
		A. ABBAS	03/21/97
		M. GOMEZ	01/22/01
		R. BORO	01/01/07

ILLINOIS DEPARTMENT OF TRANSPORTATION  
CURB OR CURB AND GUTTER REMOVAL AND REPLACEMENT

SCALE: VERT. NONE  
PLOT DATE: 12/27/2006

DRAWN BY  
CHECKED BY  
BD600-06 (BD-24)

REVISION DATE: 01/01/07

## CURB OR CURB AND GUTTER REMOVAL AND REPLACEMENT

PROJECT  
TOWN OF CICERO, ILLINOIS  
LARAMIE AVENUE LAPP RESURFACING  
PERSHING ROAD to 35th STREET  
MFT SECTION NO. 07-00202-00-RS

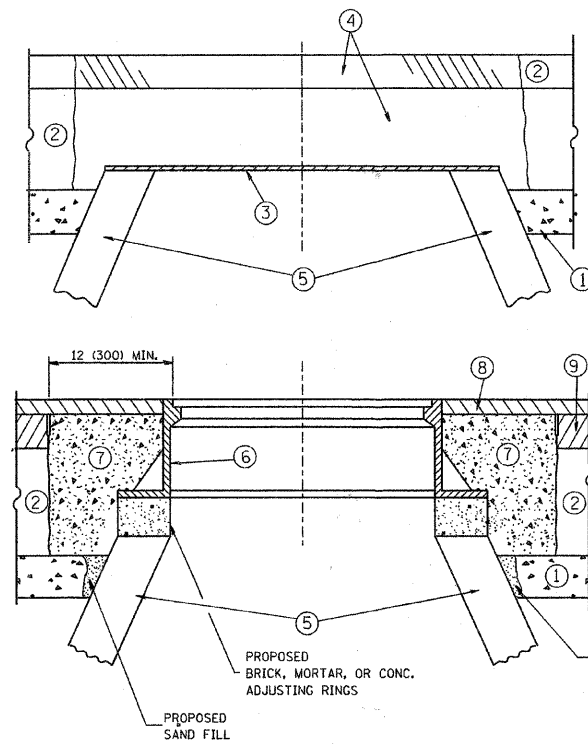
REVISIONS			
NO.	BY	DATE	DESCRIPTION

CURB OR CURB AND GUTTER REMOVAL & REPLACEMENT

PROJECT NO. 05047	SCALE NONE	SHEET 10
DRAWN/DESIGNED JFP/AMS	DATE OCT., 2007	OF 12
CHECKED/APPROVED TPG	FIELD BOOK NO. FILE	SHEETS

FAU RTE	SECTION	COUNTY	TOTAL SHEETS	SHEET NO.
2803	07-00202-00-RS	COOK	12	11
F. HW. A. REG.	ILLINOIS PROJECT	M-8003(915)		

CONTRACT NO. 63014



**CONSTRUCTION PROCEDURES**

- STAGE 1 (BEFORE PAVEMENT MILLING)**
- A) REMOVE A MINIMUM OF 12 (300) OF THE PAVEMENT FROM AROUND THE STRUCTURE.
  - B) REMOVE THE EXISTING FRAME AND LID FROM THE STRUCTURE.
  - C) COVER THE STRUCTURE OPENING WITH A 36 (900) DIAMETER METAL PLATE.
  - D) BACKFILL WITH CRUSHED STONE AND A MINIMUM 1 1/2 (140) THICK HMA SURFACE MIX APPROVED BY THE ENGINEER.
- STAGE 2 (AFTER PAVEMENT MILLING)**
- A) REMOVE THE HMA SURFACE MIX AND CRUSHED STONE.
  - B) INSTALL THE FRAME AND LID; ADJUST THE FRAME TO ITS FINAL SURFACE ELEVATION.
  - C) THE SURROUNDING SPACE SHALL BE FILLED WITH CLASS SI CONCRETE, OR HMA SURFACE COURSE OR HMA BINDER COURSE TO THE ELEVATION OF THE SURFACE OF THE EXISTING BASE COURSE OR THE BINDER COURSE.

THE PROCEDURE EXPLAINED ABOVE SHALL CONFORM TO THE APPLICABLE PORTIONS OF SECTIONS 353, 406, 602, AND 603 OF THE STANDARD SPECIFICATIONS.

**LEGEND**

- ① SUB-BASE GRANULAR MATERIAL
- ② EXISTING PAVEMENT
- ③ 36 (900) DIAMETER METAL PLATE
- ④ PROPOSED CRUSHED STONE AND HMA SURFACE MIX
- ⑤ EXISTING STRUCTURE
- ⑥ FRAME AND LID (SEE NOTES)
- ⑦ CLASS SI CONCRETE, HMA SURFACE COURSE OR HMA BINDER COURSE
- ⑧ PROPOSED HMA SURFACE COURSE
- ⑨ PROPOSED HMA BINDER COURSE

**NOTES:**

EXISTING BROKEN FRAMES AND LIDS SHALL BE REMOVED AND DISPOSED OF BY THE CONTRACTOR AND SHALL BE REPLACED AS DIRECTED BY THE ENGINEER. REPLACEMENT FRAMES AND LIDS WILL BE PAID FOR IN ACCORDANCE WITH ARTICLE 109.04 OF THE STANDARD SPECIFICATIONS UNLESS A SEPARATE PAY ITEM HAS BEEN PROVIDED.

IF THE EXISTING LIDS ARE OPEN, THE FRAME WILL BE ADJUSTED TO THE ELEVATION OF THE MILLED PAVEMENT SURFACE PRIOR TO THE MILLING OPERATION. THE FRAME WILL NOT BE REMOVED AND COVERED BY THE METAL PLATE.

CITY OF CHICAGO CASTINGS ARE THE PROPERTY OF THE CITY AND THE CONTRACTOR SHALL NOTIFY THE CITY FOR REMOVAL AND DISPOSITION OF THE CASTINGS.

THE METAL PLATE USED TO COVER THE STRUCTURE SHALL REMAIN THE PROPERTY OF THE CONTRACTOR.

WHEN STRUCTURES ARE TO BE ADJUSTED OR RECONSTRUCTED, THE LOWERING AND RAISING OF THE FRAMES AND LIDS WILL NOT BE PAID FOR SEPARATELY BUT WILL BE INCLUDED IN THE COST OF THE CORRESPONDING PAY ITEM.

**LOCATION OF STRUCTURES:**

THE CONTRACTOR WILL BE REQUIRED TO KEEP A RECORD OF THE LOCATIONS OF THE BURIED STRUCTURES ACCORDING TO THE STATION AND DISTANCE LEFT OR RIGHT OF THE CENTERLINE OF PAVEMENT. UPON COMPLETION OF THE WORK, THE CONTRACTOR WILL DELIVER THE RECORD TO THE ENGINEER.

**BASIS OF PAYMENT:** THIS WORK WILL BE PAID FOR AT THE CONTRACT UNIT PRICE PER EACH FOR "FRAMES AND LIDS TO BE ADJUSTED, SPECIAL". NEW FRAMES AND LIDS, WHEN SPECIFIED, WILL BE PAID FOR SEPARATELY.

**DETAILS FOR FRAMES AND LIDS ADJUSTMENT WITH MILLING**

ALL DIMENSIONS ARE IN INCHES (MILLIMETERS) UNLESS OTHERWISE SHOWN

REVISIONS	
NAME	DATE
R. SHAH	10/25/94
R. SHAH	01/30/95
R. SHAH	03/10/95
A. ABBAS	03/21/97
R. WIEDEMAN	05/14/04
R. BORO	01/01/07

ILLINOIS DEPARTMENT OF TRANSPORTATION  
**DETAILS FOR FRAMES AND LIDS ADJUSTMENT WITH MILLING**

SCALE: VERT. NONE  
HORIZ. NONE  
PLOT DATE: 10/31/2006

DRAWN BY  
CHECKED BY

BD600-03 (BD-8)  
REVISION DATE: 01/01/07

PROJECT  
**TOWN OF CICERO, ILLINOIS  
LARAMIE AVENUE LAPP RESURFACING  
PERSHING ROAD TO 35th STREET  
MFT SECTION NO. 07-00202-00-RS**

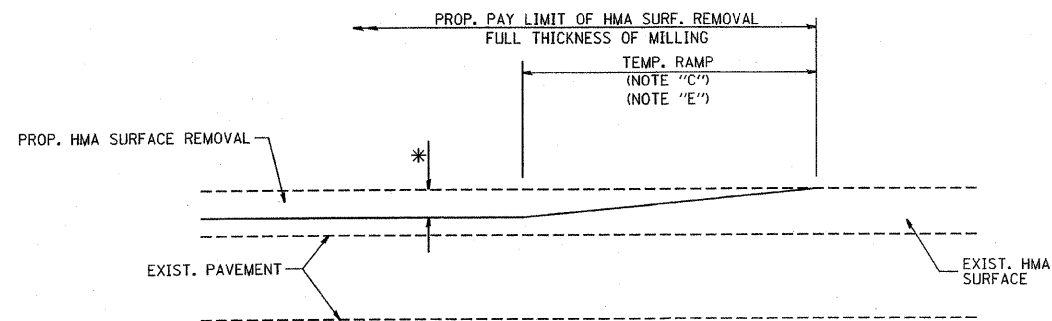
REVISIONS			
NO.	BY	DATE	DESCRIPTION

**DETAILS FOR FRAMES & LIDS ADJUSTMENT WITH MILLING**

PROJECT NO. 05047	SCALE NONE	SHEET 11
DRAWN/DESIGNED JFP/AMS	DATE OCT., 2007	OF 12
CHECKED/APPROVED TPG	FIELD BOOK NO. FILE	SHEETS

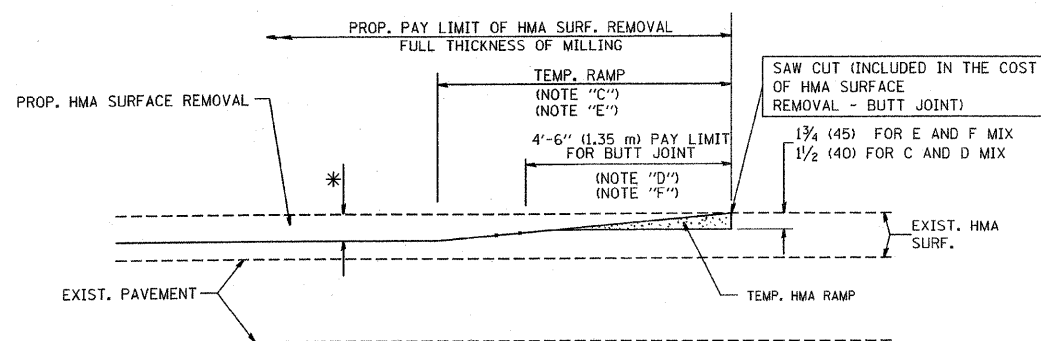
FAU RTE	SECTION	COUNTY	TOTAL SHEETS	SHEET NO.
2803	07-00202-00-RS	COOK	12	12
F. HW. A. REG.	ILLINOIS PROJECT	M-8003(915)		

CONTRACT NO. 63014



MILLED TEMPORARY RAMP  
(FOR BUTT JOINT AND HMA TAPER SEE DETAIL BELOW)

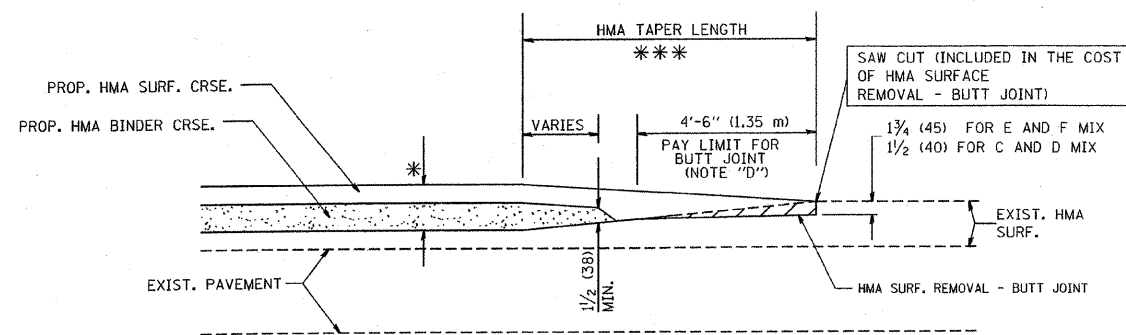
OPTION 1



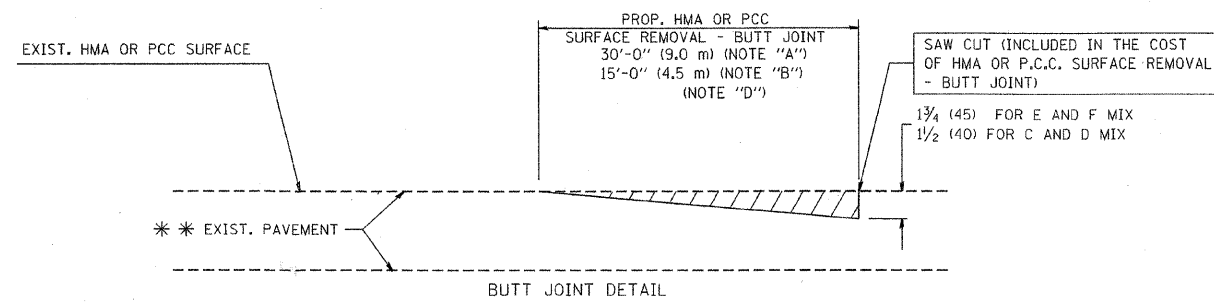
HMA CONSTRUCTED TEMPORARY RAMP  
(FOR BUTT JOINT AND HMA TAPER SEE DETAIL BELOW)

OPTION 2

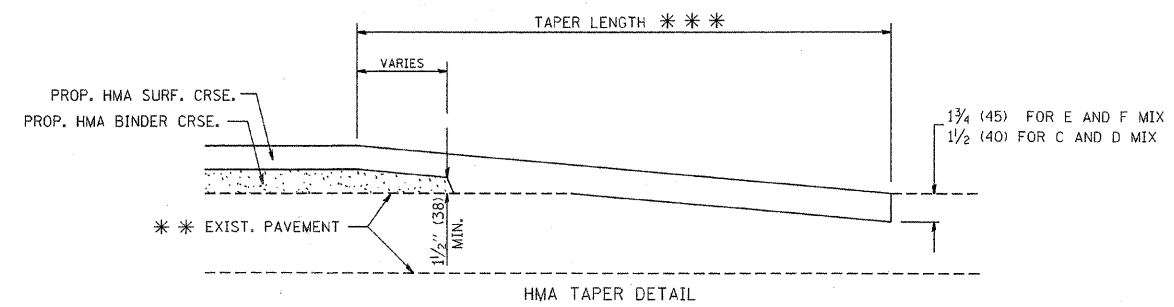
TYPICAL TEMPORARY RAMP



BUTT JOINT AND HMA TAPER  
TYPICAL BUTT JOINT AND HMA TAPER FOR MILLING AND RESURFACING



BUTT JOINT DETAIL



HMA TAPER DETAIL

TYPICAL BUTT JOINT AND HMA TAPER FOR RESURFACING ONLY

\*\*\* PC CONCRETE, HMA OR HMA RESURFACED PAVEMENT.

NOTES

- A: MAINLINE ROADWAYS AND MAJOR SIDE ROADS.
  - B: MINOR SIDE ROADS.
  - C: THE TEMP. RAMP SHALL BE CONSTRUCTED IMMEDIATELY UPON REMOVAL OF THE EXISTING HMA SURFACE.
  - D: THE BUTT JOINT SHALL BE CONSTRUCTED IMMEDIATELY PRIOR TO PLACING THE PROPOSED HMA COURSES.
  - E: TAPER THE TEMP. RAMP AT A RATE OF 3'-0" (900 mm) PER 1 INCH (25 mm) OF MILLING THICKNESS.
  - F: INSTALLATION AND REMOVAL OF THE 4'-6" (1.35 m) TEMP. RAMP IS INCLUDED IN COST OF HMA SURFACE REMOVAL - BUTT JOINT
  - G: SEE ARTICLE 406.08 AND 406.14 OF THE STANDARD SPECIFICATIONS FOR "HMA AND/OR PCC SURFACE REMOVAL, BUTT JOINT".
- \* SEE TYPICAL SECTIONS FOR MILLING THICKNESS.
- \*\*\* 20'-0" (6.1 m) PER 1 (25) RESURFACING (NOTE "A")  
10'-0" (3.0 m) PER 1 (25) RESURFACING (NOTE "B")

ALL DIMENSIONS ARE IN INCHES (MILLIMETERS) UNLESS OTHERWISE SHOWN.

BASIS OF PAYMENT:

THE BUTT JOINT WILL BE PAID FOR AT THE CONTRACT UNIT PRICE PER SQUARE YARD (SQUARE METER) FOR "HOT-MIX ASPHALT SURFACE REMOVAL - BUTT JOINT" OR FOR "PORTLAND CEMENT CONCRETE SURFACE REMOVAL - BUTT JOINT".

REVISIONS	
NAME	DATE
M. DE YONG	6-13-90
M. DE YONG	7-3-90
M. DE YONG	3-27-92
R. SHAH	09/09/94
R. SHAH	10/25/94
A. ABBAS	03/21/97
M. GOMEZ	04/06/01
R. BORO	01/01/07

ILLINOIS DEPARTMENT OF TRANSPORTATION

BUTT JOINT AND HMA TAPER DETAILS

SCALE: VERT. NONE  
HORIZ. NONE  
PLOT DATE: 10/31/2006

DRAWN BY  
CHECKED BY

BD400-05 (VI=BD32)  
REVISION DATE: 01/01/07

**Frank Novotny & Associates, Inc.**  
Civil Engineers/  
Municipal Consultants  
825 Midway Drive • Willowbrook, IL • 60527 • Telephone: (630) 887-8640 • Fax: (630) 887-0132  
Illinois Professional Design Firm No. 184-000928

PROJECT  
**TOWN OF CICERO, ILLINOIS  
LARAMIE AVENUE LAPP RESURFACING  
PERSHING ROAD TO 35th STREET  
MFT SECTION NO. 07-00202-00-RS**

REVISIONS			
NO.	BY	DATE	DESCRIPTION

BUTT JOINT AND HOT-MIX ASPHALT TAPER DETAILS

PROJECT NO. 05047	SCALE NONE	SHEET 12
DRAWN/DESIGNED JFP/AMS	DATE OCT., 2007	OF 12
CHECKED/APPROVED TPG	FIELD BOOK NO. FILE	SHEETS