

HORIZONTAL AND VERTICAL CONTROL

Chain IL82 contains:
310 CUR 200 210 CUR 220 230 CUR 240 250 CUR 260 CUR 270 280 CUR 290 10

Beginning chain IL82 description

Point 310 N 1,686,670.0404 E 2,296,953.0212 Sta 544+36.8000
COURSE FROM 310 TO PC 200 0° 11' 52.94" DIST 3,573.5528'

Curve Data

Curve 200
P.I. Station 585+53.9859 N 1,690,787.2018 E 2,296,967.2519
DELTA = 0° 21' 44.72" (LT)
DEGREE = 0° 02' 00.00"
Tangent = 543.6332'
Length = 1,087.2628'
Radius = 171,887.0000'
External = 0.8597'
Long Chord = 1,087.2609'
Mid. Ord. = 0.8597'
P.C. Station 580+10.3528 N 1,690,243.5718 E 2,296,965.3729
P.T. Station 590+97.6155 N 1,691,330.8327 E 2,296,965.6922
C.C. N 1,690,837.6858 E 2,125,079.3996

COURSE FROM PT 200 TO 210 359° 50' 08.22" DIST 2,097.1956'

Point 210 N 1,693,428.0197 E 2,296,959.6753 Sta 611+94.8111

COURSE FROM 210 TO PC 220 359° 43' 49.80" DIST 4,047.8477'

Curve Data

Curve 220
P.I. Station 656+39.6999 N 1,697,872.8594 E 2,296,938.7680
DELTA = 0° 37' 51.68" (RT)
DEGREE = 0° 04' 46.08"
Tangent = 397.0411'
Length = 794.0743'
Radius = 72,100.4989'
External = 1.0932'
Long Chord = 794.0702'
Mid. Ord. = 1.0932'
P.C. Station 652+42.6588 N 1,697,475.8226 E 2,296,940.6356
P.T. Station 660+36.7331 N 1,698,269.8926 E 2,296,941.2733
C.C. N 1,697,814.9591 E 2,369,040.3369

COURSE FROM PT 220 TO 230 0° 21' 41.48" DIST 4,946.9845'

Point 230 N 1,703,216.7786 E 2,296,972.4873 Sta 709+83.7176

COURSE FROM 230 TO PC 240 0° 29' 46.34" DIST 5,047.5240'

Curve Data

Curve 240
P.I. Station 765+31.2415 N 1,708,764.0946 E 2,297,020.5306
DELTA = 0° 17' 37.17" (LT)
DEGREE = 0° 01' 45.72"
Tangent = 500.0000'
Length = 999.9978'
Radius = 195,109.3370'
External = 0.6407'
Long Chord = 999.9967'
Mid. Ord. = 0.6407'
P.C. Station 760+31.2415 N 1,708,264.1133 E 2,297,016.2004
P.T. Station 770+31.2393 N 1,709,264.0914 E 2,297,022.2981
C.C. N 1,709,953.8208 E 2,101,914.1803

COURSE FROM PT 240 TO 250 0° 12' 09.17" DIST 9,713.4707'

Point 250 N 1,718,977.5015 E 2,297,056.6362 Sta 867+44.7101

COURSE FROM 250 TO PC 260 0° 20' 16.00" DIST 5,457.6237'

Curve Data

Curve 260
P.I. Station 924+00.3603 N 1,724,633.0535 E 2,297,089.9779
DELTA = 11° 59' 46.48" (RT)
DEGREE = 3° 02' 24.22"
Tangent = 198.0266'
Length = 394.6053'
Radius = 1,884.6917'
External = 10.3749'
Long Chord = 393.8849'
Mid. Ord. = 10.3181'
P.C. Station 922+02.3337 N 1,724,435.0303 E 2,297,088.8104
P.T. Station 925+96.9391 N 1,724,826.5094 E 2,297,132.2784
C.C. N 1,724,423.9195 E 2,298,973.4693

COURSE FROM PT 260 TO PC 270 12° 20' 02.47" DIST 3,040.8219'

Curve Data

Curve 270
P.I. Station 958+89.5426 N 1,728,043.1161 E 2,297,835.6131
DELTA = 0° 37' 37.50" (LT)
DEGREE = 0° 07' 28.31"
Tangent = 251.7816'
Length = 503.5582'
Radius = 46,009.3945'
External = 0.6889'
Long Chord = 503.5557'
Mid. Ord. = 0.6889'
P.C. Station 956+37.7610 N 1,727,797.1459 E 2,297,781.8299
P.T. Station 961+41.3192 N 1,728,289.6602 E 2,297,886.7010
C.C. N 1,737,625.2352 E 2,252,834.3824

COURSE FROM PT 270 TO 280 11° 42' 24.97" DIST 1,877.4576'

Point 280 N 1,730,128.0634 E 2,298,267.6482 Sta 980+18.7768

COURSE FROM 280 TO PC 290 11° 44' 24.73" DIST 3,762.5977'

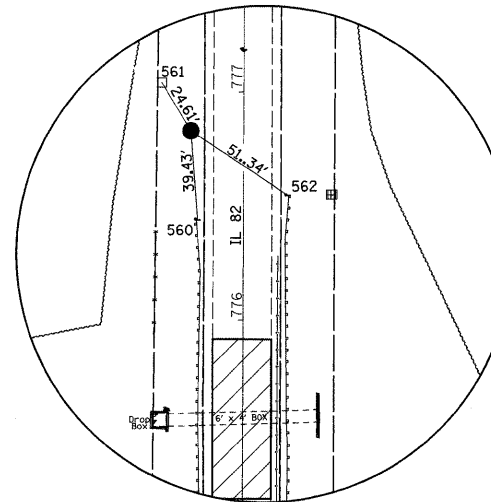
Curve Data

Curve 290
P.I. Station 1020+46.4385 N 1,734,071.4676 E 2,299,087.1740
DELTA = 15° 39' 04.63" (LT)
DEGREE = 2° 58' 15.08"
Tangent = 265.0641'
Length = 526.8276'
Radius = 1,928.5953'
External = 18.1299'
Long Chord = 525.1911'
Mid. Ord. = 17.9610'
P.C. Station 1017+81.3744 N 1,733,811.9485 E 2,299,033.2402
P.T. Station 1023+08.2020 N 1,734,335.9144 E 2,299,069.0944
C.C. N 1,734,204.3682 E 2,297,144.9906

COURSE FROM PT 290 TO 10 356° 05' 20.09" DIST 1,628.2647'

Point 10 N 1,735,960.3870 E 2,298,958.0332 Sta 1039+36.4667

Ending chain IL82 description



HORIZONTAL CONTROL
POINT No. 90189

90189



HORIZONTAL CONTROL POINTS

POINT	NORTH	EAST	ELEVATION	CHAIN	STATION	OFFSET	DESCRIPTION
90189	1709915.9500	2297001.3810	724.3330	IL82	776+83.0199	23.2214' LT	PHOTO CONTROL H. & V., PIN

SURVEY WORK POINTS

POINT	NORTH	EAST	ELEVATION	CHAIN	STATION	OFFSET	DESCRIPTION
100	1709808.3050	2296955.5270	716.6280	IL82	775+75.2135	68.6946' LT	GPS CONTROL POINT
101	1709833.4280	2297110.3120	716.0650	IL82	776+00.8835	86.0006' RT	GPS CONTROL POINT

BENCH MARKS

POINT	NORTH	EAST	ELEVATION	CHAIN	STATION	OFFSET	DESCRIPTION
489	1709793.8200	2296990.8200	716.9810	IL82	775+60.8533	33.3506' LT	HEADWALL, CROSS-CUT

REFERENCE TIES

POINT	CHAIN	STATION	OFFSET	DESCRIPTION
560	IL82	776+43.7085	20.1454' LT	GUARDRAIL
561	IL82	777+04.0046	36.0737' LT	FENCE POST
562	IL82	776+54.5648	19.5065' RT	GUARDRAIL

APPARENT PROPERTY CORNERS

POINT	NORTH	EAST	ELEVATION	CHAIN	STATION	OFFSET	DESCRIPTION
723	1709735.4340	2296983.8410	720.0060	IL82	775+02.4430	40.1231' LT	FENCE CORNER