

SQUAD LEADER: FAITH DUNCAN (815) 284-5364

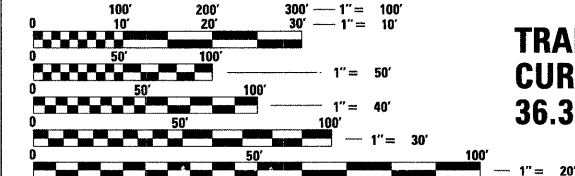
PROJECT ENGINEER: REBECCA MARRUFFO

INDEX OF SHEETS AND STANDARDS

Page	Description
1	COVER SHEET
2 - 4	SUMMARY OF QUANTITIES
5 - 6	GENERAL NOTES
7 - 15	TYPICAL SECTIONS
16 - 21	SCHEDULE OF QUANTITIES
22 - 23	HORIZONTAL & VERTICAL CONTROL
24 - 29	PLAN & PROFILE
30 - 54	BRIDGE PLANS
55 - 67	STAGING DETAILS
68 - 71	STATION & OFFSET DETAILS
72 - 75	REMOVAL DETAILS
76	DISTRICT STANDARDS
77	CONCRETE HEADWALLS FOR PIPE DRAINS (27.4)
78	DELINATOR AND POST (37.4)
79	TYPICAL BENCHING ON EXISTING EMBANKMENT (50.4)
80 - 81	LETTERING FOR NAME PLATE (89.4)
82	EROSION CONTROL DETAILS FOR SILT FENCES (29.2)
83 - 120	INFORMATIONAL WARNING SIGN (FOR NARROW TRAVEL LANES) (39.2)
	WITNESS MARKER & PERMANENT SURVEY MARKERS, TYPE II (66.2)
	TRAFFIC CONTROL & PROTECTION FOR RAMPS (95.2)
	STORM WATER POLLUTION PREVENTION PLAN (2.1)
	TYPICAL PAVEMENT MARKINGS (41.1)
	PAINTING DETAILS (44.1)
	I-80 CROSS SECTIONS

STATE STANDARDS

001001-01	AREAS OF REINFORCEMENT BARS
001006	DECIMAL OF AN INCH AND A FOOT
280001-04	TEMPORARY EROSION CONTROL SYSTEMS
420001-07	PAVEMENT JOINTS
420401-06	BRIDGE APPROACH PAVEMENT
421001-02	BAR REINFORCEMENT FOR CRC PAVEMENT
421101-07	24' CRC PAVEMENT
442001-04	CLASS A PATCHES
483001-04	PCC SHOULDER
515001-02	NAME PLATE FOR BRIDGES
601001-02	SUB-SURFACE DRAINS
601101	CONCRETE HEADWALL FOR PIPE DRAIN
609500-05	STEEL PLATE BEAM GUARDRAIL
630001-07	STEEL PLATE BEAM GUARDRAIL
630201-05	PCC/HMA STABILIZATION AT STEEL PLATE BEAM GUARDRAIL
630301-04	SHOULDER WIDENING FOR TYPE 1 (SPECIAL) GUARDRAIL TERMINALS
631011-04	TRAFFIC BARRIER TERMINAL, TYPE 2
631031-06	TRAFFIC BARRIER TERMINAL, TYPE 6
635001	DELINATORS
635006-02	REFLECTOR AND TERMINAL MARKER PLACEMENT
635011-01	REFLECTOR MARKER AND MOUNTING DETAILS
642001	SHOULDER RUMBLE STRIPS
667101	PERMANENT SURVEY MARKERS
701101-01	TYPICAL APPLICATION OF TRAFFIC CONTROL STANDARD
701400-02	TYPICAL APPLICATION OF TRAFFIC CONTROL STANDARD
701401-04	TYPICAL APPLICATION OF TRAFFIC CONTROL STANDARD
701402-06	TYPICAL APPLICATION OF TRAFFIC CONTROL STANDARD
701406-04	TYPICAL APPLICATION OF TRAFFIC CONTROL STANDARD
701411-04	TYPICAL APPLICATION OF TRAFFIC CONTROL STANDARD
701426-02	TYPICAL APPLICATION OF TRAFFIC CONTROL STANDARD
701901	TRAFFIC CONTROL DEVICES
704001-04	TEMPORARY CONCRETE BARRIER
720011	METAL POST FOR SIGNS, MARKERS AND DELINATORS
728001	TELESCOPING STEEL SIGN SUPPORT
729001	APPLICATIONS OF TYPES A & B METAL POSTS (FOR SIGNS AND MARKERS)
780001-01	TYPICAL PAVEMENT MARKINGS
781001-02	TYPICAL APPLICATIONS RAISED REFLECTIVE PAVEMENT MARKERS



TRAFFIC VOLUMES: I-80
CURRENT ADT 35,800 (2008)
36.38% TRUCKS

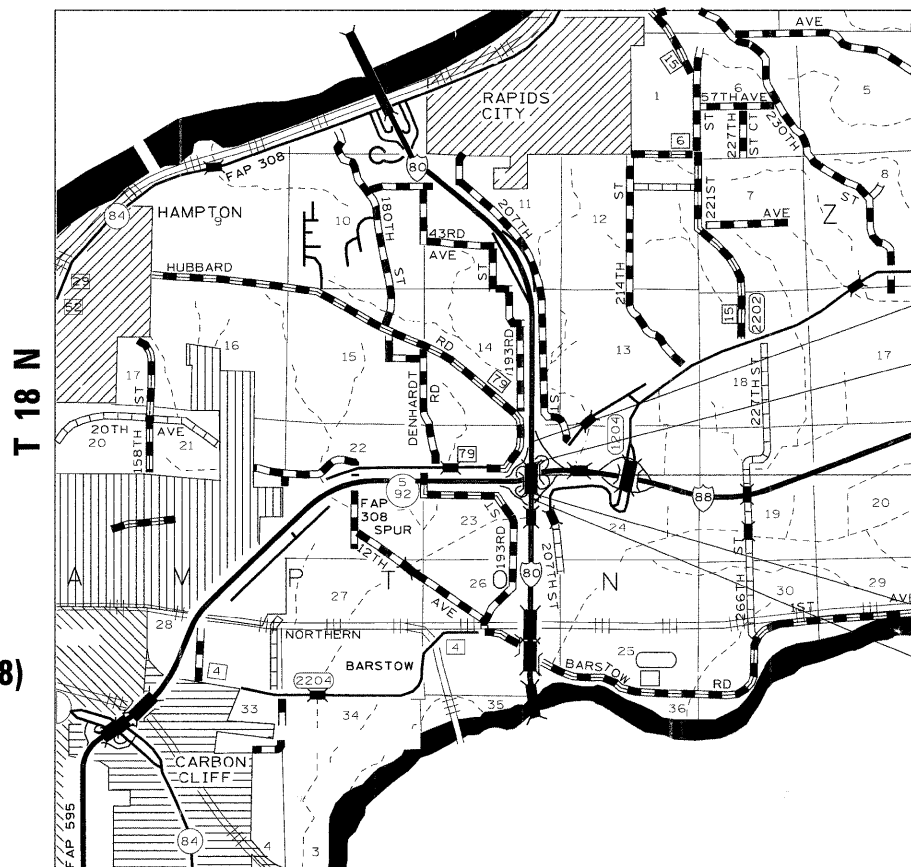
FULL SIZE PLANS HAVE BEEN PREPARED USING STANDARD ENGINEERING SCALES. REDUCED SIZED PLANS WILL NOT CONFORM TO STANDARD SCALES. IN MAKING MEASUREMENTS ON REDUCED PLANS, THE ABOVE SCALES MAY BE USED.

J.U.L.I.E.
JOINT UTILITY LOCATION INFORMATION FOR EXCAVATION
811 OR 1-800-892-0123

HAMPTON TOWNSHIP SECTION 23
CONTRACT NO. 64C74

STATE OF ILLINOIS
DEPARTMENT OF TRANSPORTATION
DIVISION OF HIGHWAYS
PROPOSED
HIGHWAY PLANS

F.A.I. ROUTE 80 (I-80)
SECTION 81-1HBY-D
PROJECT BHI-080-1(144)003
ROCK ISLAND COUNTY
C-92-014-08
R I E



IMPROVEMENT BEGINS
STA 205 + 09.04

SECTION BEGINS
STA 214 + 24.19

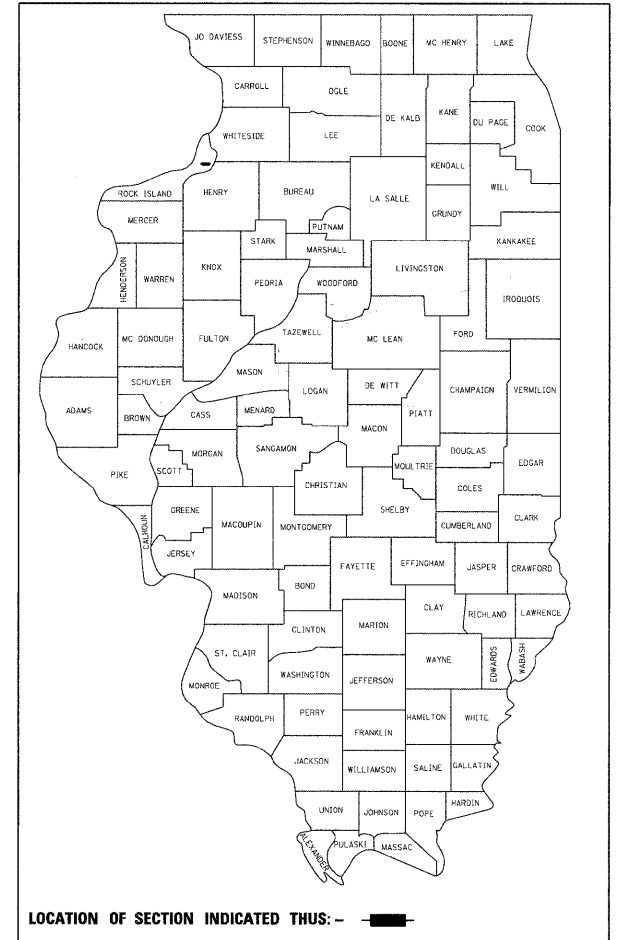
SECTION 81-1HBY-D
INCLUDES THE REMOVAL AND REPLACEMENT
OF BRIDGE DECK AND SOUTH SLOPE WALL ON THE
EXISTING STRUCTURE SN 081-0012 &
SN 081-0013 ON I-80 OVER I-88

SECTION ENDS
STA 221 + 45.30

IMPROVEMENT ENDS
STA 230 + 31.58

F.A.I. RTE.	SECTION	COUNTY	TOTAL SHEETS	SHEET NO.
80	81-1HBY-D	ROCK ISLAND	120	1

D-92-004-07



STATE OF ILLINOIS
DEPARTMENT OF TRANSPORTATION
DIVISION OF HIGHWAYS

SUBMITTED February 28, 20 08

George F. Ryan
DEPUTY DIRECTOR OF HIGHWAYS, REGION ENGINEER

March 21, 20 08

Eric E. Harman
ENGINEER OF DESIGN AND ENVIRONMENT

March 21, 20 08

Christine M. Reed
DIRECTOR OF HIGHWAYS, CHIEF ENGINEER

PRINTED BY THE AUTHORITY
OF THE STATE OF ILLINOIS

REGION 2, DISTRICT 2
DIXON

GROSS LENGTH OF PROJECT = 721.11 LIN FT = 0.14 MI
NET LENGTH OF PROJECT = 721.11 LIN FT = 0.14 MI

REVISED 4/8/08