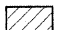
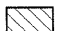

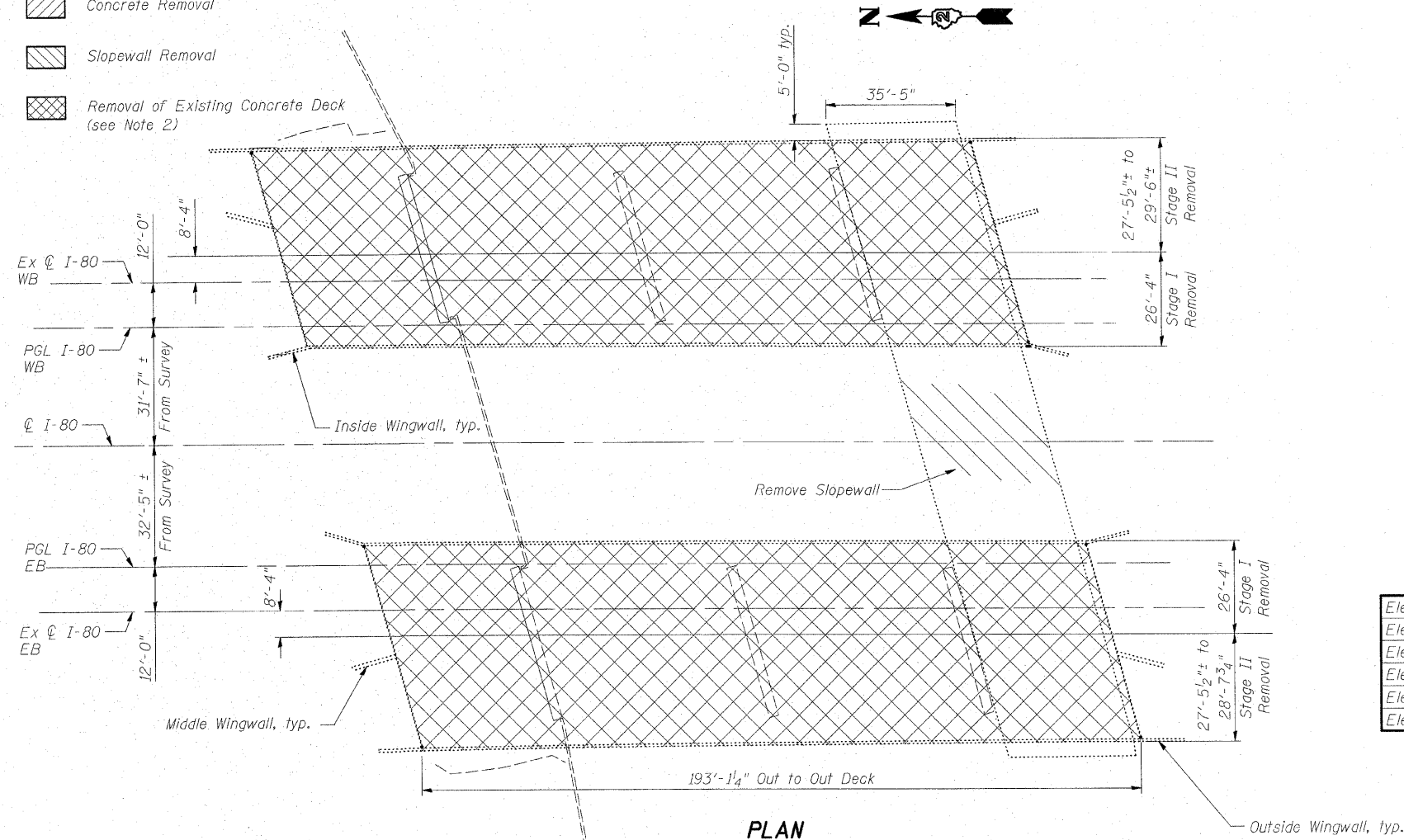


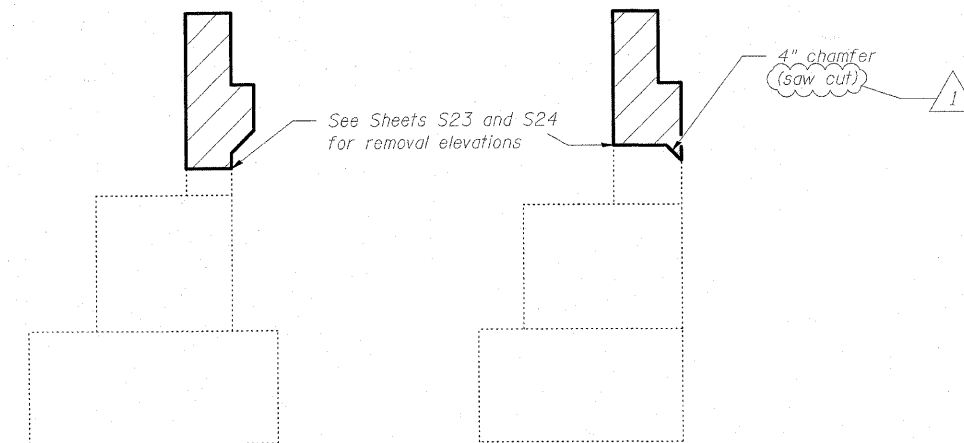
STATE OF ILLINOIS
DEPARTMENT OF TRANSPORTATION

LEGEND

-  Concrete Removal
-  Slopewall Removal
-  Removal of Existing Concrete Deck (see Note 2)



PLAN



**ABUTMENT SECTION
BTW. W30 BEAMS**

**ABUTMENT SECTION
BTW. W33 BEAMS**

TABLE OF ELEVATIONS

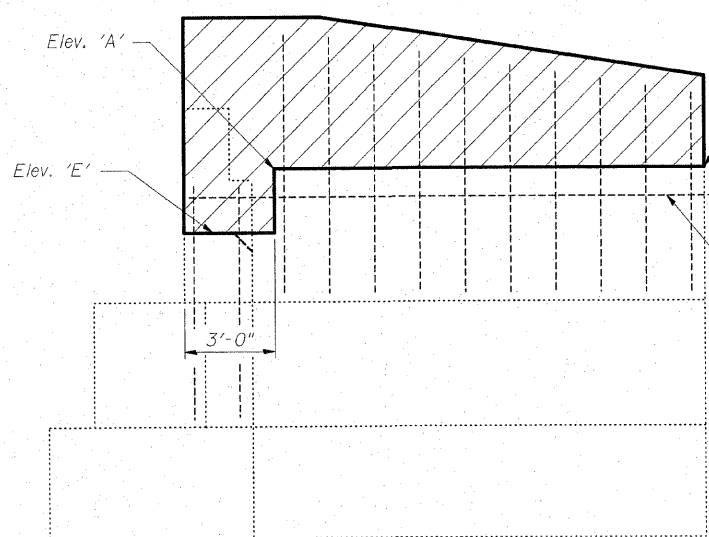
	Abut. A	Abut. B	Abut. C	Abut. D
Elev. 'A'	612.31	606.31	610.94	605.00
Elev. 'B'	612.57	606.06	611.19	604.74
Elev. 'C'	612.15	606.23	611.63	605.71
Elev. 'D'	612.36	605.91	611.85	605.40
Elev. 'E'	610.15	604.24	608.78	602.94
Elev. 'F'	609.96	604.09	609.52	603.65

BILL OF MATERIAL

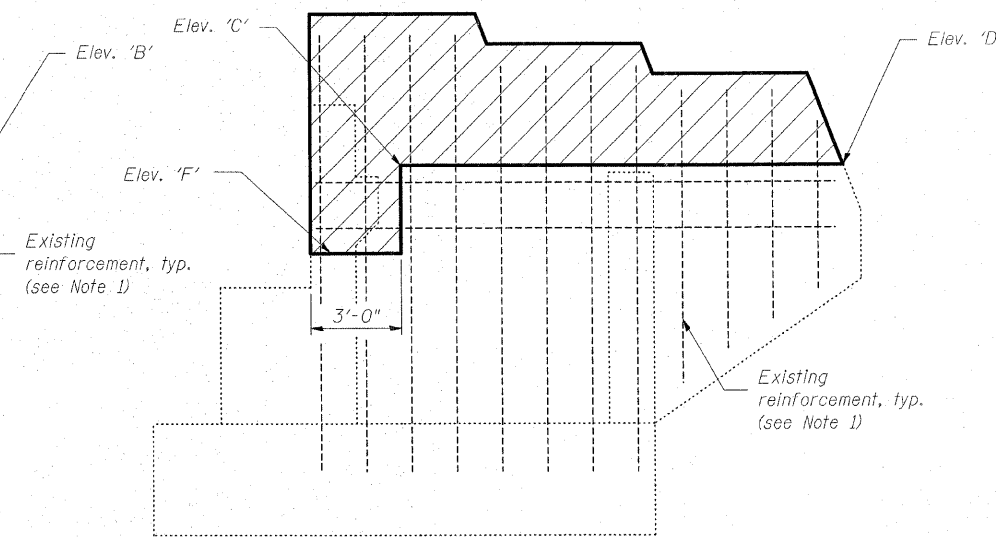
Item	Unit	Total
Concrete Removal	Cu. Yd.	61.2
Slopewall Removal	Sq. Yd.	676
Removal of Existing Concrete Deck	Each	2

Notes:

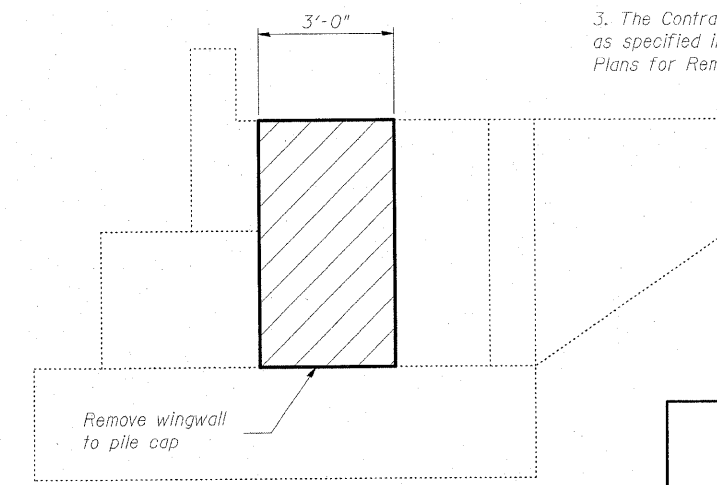
1. Reinforcement extending into removed area shall be cleaned, straightened, and incorporated into the new construction.
2. Saw cutting of the existing deck is permitted in accordance with the requirements of the special provision "Removal of Existing Non-composite Bridge Decks".
3. The Contractor shall submit a demolition plan as specified in the Special Provision "Demolition Plans for Removal of Existing Structures".



OUTSIDE WINGWALL



INSIDE WINGWALL



MIDDLE WINGWALL