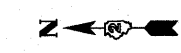
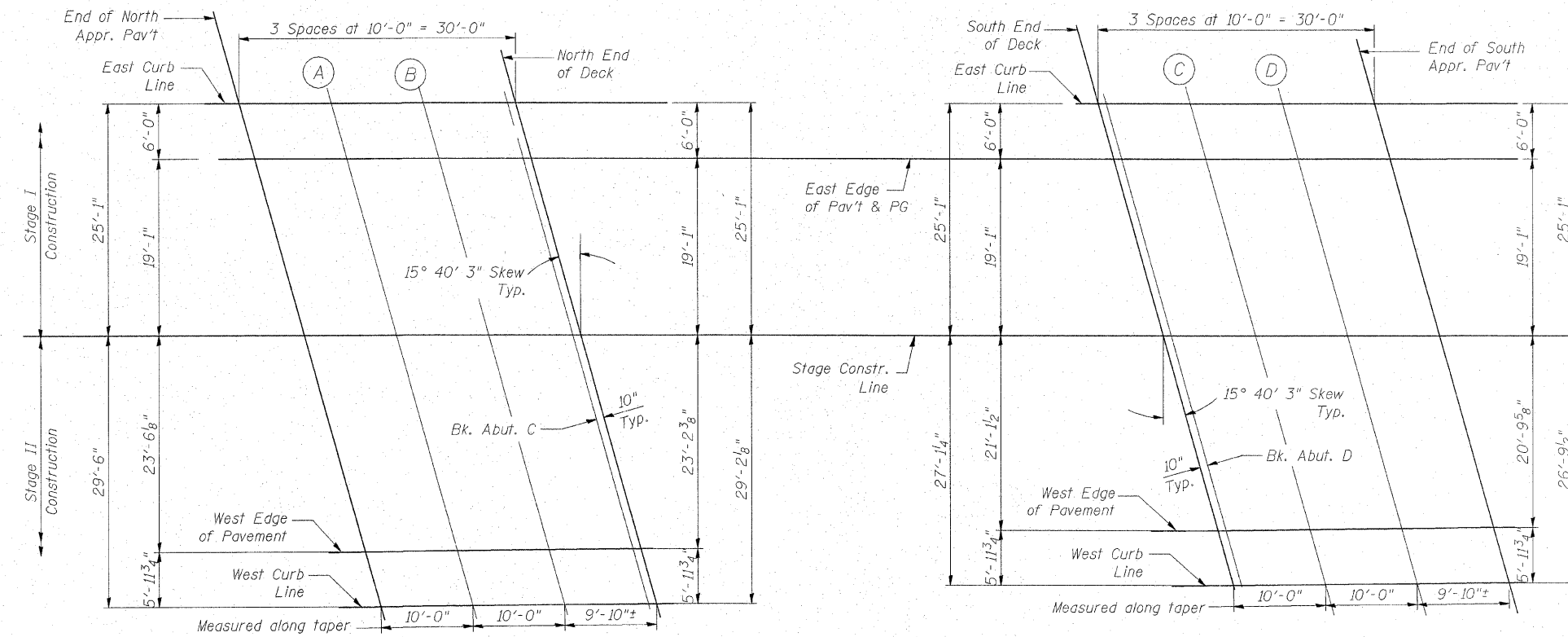


STATE OF ILLINOIS
DEPARTMENT OF TRANSPORTATION

Sheet S10 of S25

F.A.I. RTE.	SECTION	COUNTY	TOTAL SHEETS	SHEET NO.
80	81-IHBY-D	ROCK ISLAND	170	39
FED. ROAD DIST. NO. 2 ILLINOIS			FED. AID PROJECT	

Contract # 64C74



NORTH APPROACH PAVEMENT

SOUTH APPROACH PAVEMENT

PLAN

EAST CURB LINE

Location	Station	Offset	Theoretical Grade Elevations
End N. Appr. Pav't.	216+62.21	-6.00	614.43
A	216+72.21	-6.00	614.13
B	216+82.21	-6.00	613.83
North End of Deck	216+92.21	-6.00	613.53
South End of Deck	218+86.13	-6.00	607.71
C	218+96.13	-6.00	607.41
D	219+06.13	-6.00	607.11
End S. Appr. Pav't.	219+16.13	-6.00	606.81

EAST EDGE OF PAVEMENT & PG

Location	Station	Offset	Theoretical Grade Elevations
End N. Appr. Pav't.	216+63.89	0.00	614.50
A	216+73.89	0.00	614.20
B	216+83.89	0.00	613.90
North End of Deck	216+93.89	0.00	613.60
South End of Deck	218+87.81	0.00	607.79
C	218+97.81	0.00	607.49
D	219+07.81	0.00	607.19
End S. Appr. Pav't.	219+17.81	0.00	606.89

STAGE CONSTRUCTION LINE

Location	Station	Offset	Theoretical Grade Elevations
End N. Appr. Pav't.	216+69.24	19.08	614.42
A	216+79.24	19.08	614.12
B	216+89.24	19.08	613.82
North End of Deck	216+99.24	19.08	613.52
South End of Deck	218+93.16	19.08	607.70
C	219+03.16	19.08	607.40
D	219+13.16	19.08	607.10
End S. Appr. Pav't.	219+23.16	19.08	606.80

WEST EDGE OF PAVEMENT

Location	Station	Offset	Theoretical Grade Elevations
End N. Appr. Pav't.	216+75.84	42.60	613.85
A	216+85.81	42.49	613.56
B	216+95.78	42.38	613.26
North End of Deck	217+05.75	42.28	612.96
South End of Deck	218+99.09	40.21	607.19
C	219+09.06	40.10	606.90
D	219+19.03	40.00	606.60
End S. Appr. Pav't.	219+29.00	39.89	606.30

WEST CURB LINE

Location	Station	Offset	Theoretical Grade Elevations
End N. Appr. Pav't.	216+77.51	48.58	613.68
A	216+87.48	48.47	613.38
B	216+97.45	48.37	613.08
North End of Deck	217+07.42	48.26	612.79
South End of Deck	219+00.77	46.19	607.02
C	219+10.74	46.08	606.72
D	219+20.71	45.98	606.42
End S. Appr. Pav't.	219+30.68	45.87	606.13



Revised, April 8, 2008.

ILLINOIS DEPARTMENT OF TRANSPORTATION
TOP OF APPROACH SLAB ELEVATIONS (EB BRIDGE)
INTERSTATE 80 OVER INTERSTATE 88
F.A.I. ROUTE 80 - SECTION 81-IHBY-D
ROCK ISLAND COUNTY
STATION 217+81.50
EB S.N. 081-0012 & WB 081-0013
DRAWN BY: A. Yargicoglu
CHECKED BY: A. Durbak
DATE: FEBRUARY 27, 2008