

STATE OF ILLINOIS
DEPARTMENT OF TRANSPORTATION

Sheet S24 of S25

F.A.I. RTE.	SECTION	COUNTY	TOTAL SHEETS	SHEET NO.
80	81-1HBY-D	ROCK ISLAND	120	83
FED. ROAD DIST. NO. 2 ILLINOIS		FED. AID PROJECT		

Contract # 64C74

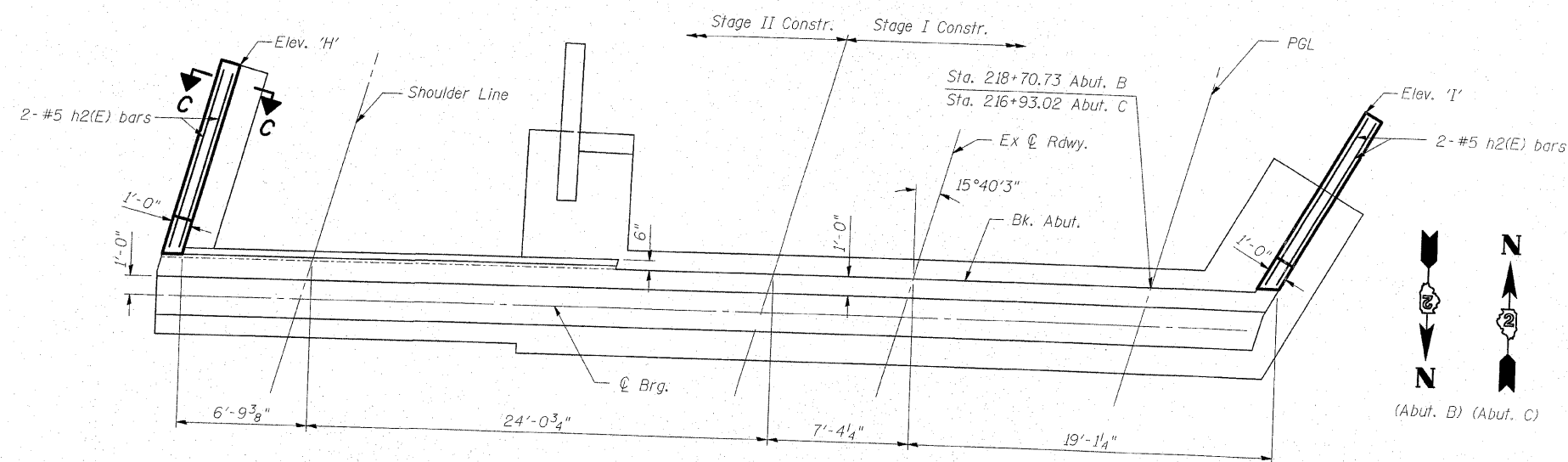
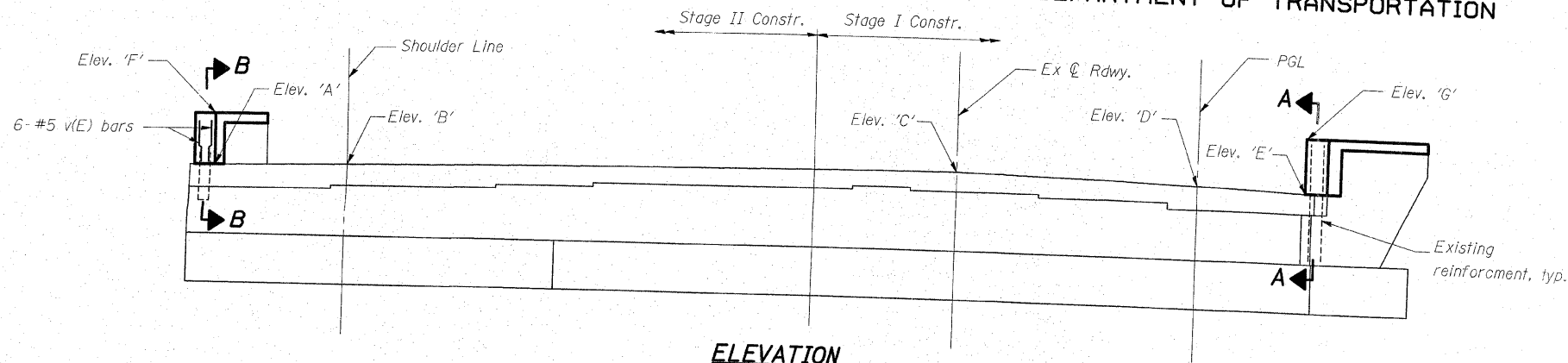
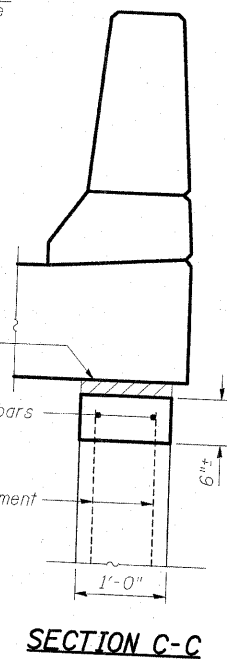
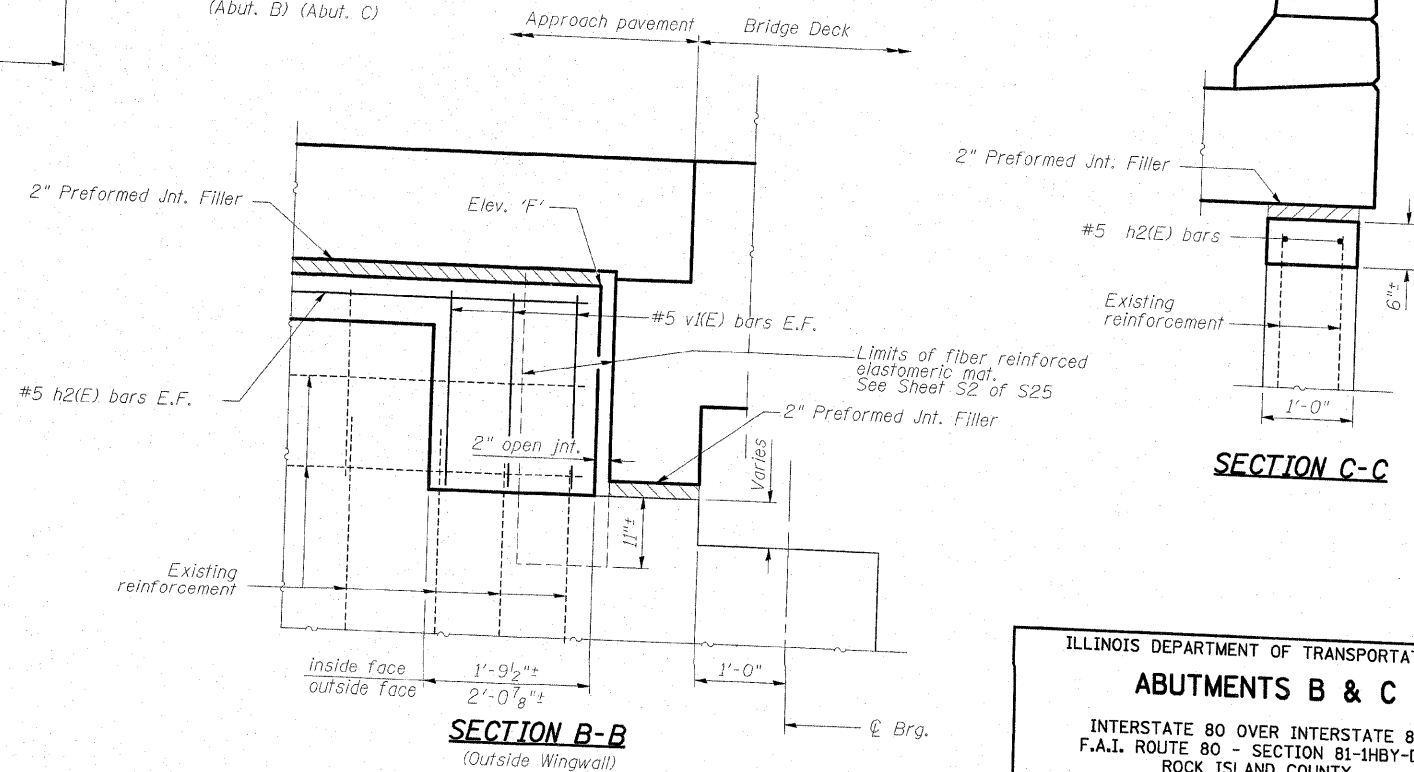
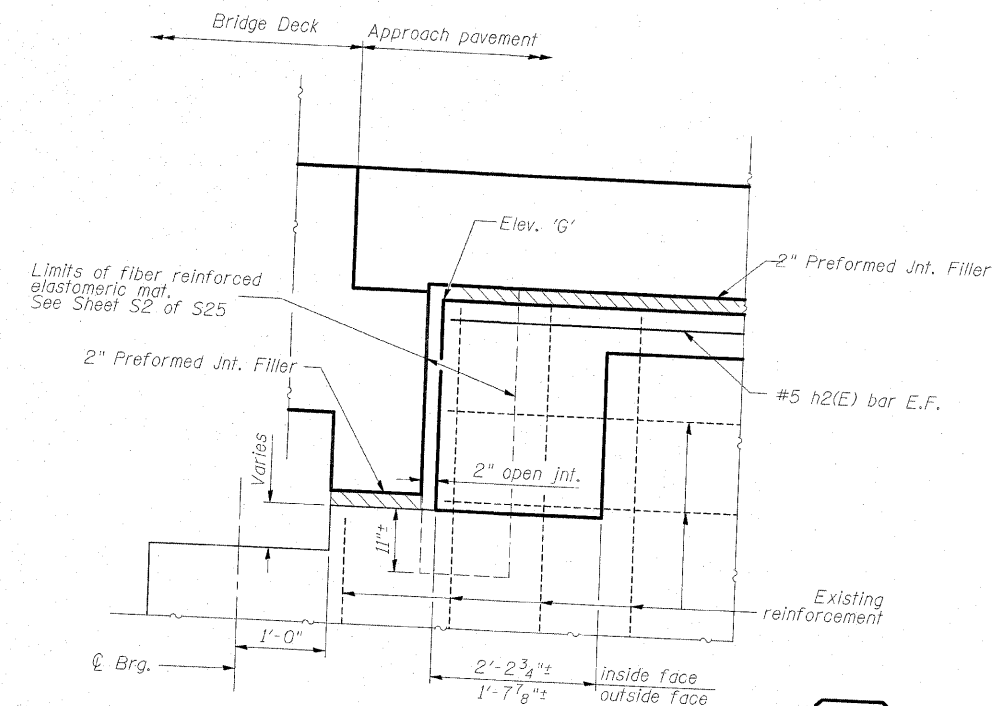


TABLE OF ELEVATIONS

	Abut. B	Abut. C
Elev. 'A'	604.24	608.78
Elev. 'B'	604.32	608.96
Elev. 'C'	604.55	609.68
Elev. 'D'	604.26	609.60
Elev. 'E'	604.09	609.52
Elev. 'F'	606.87	611.38
Elev. 'G'	606.71	612.13
Elev. 'H'	606.56	611.69
Elev. 'I'	606.41	612.35

SUBSTRUCTURE
BILL OF MATERIAL

Bar	No.	Size	Length	Shape
h2(E)	8	#5	9'- 11"	—
v(E)	12	#5	2'- 3"	—
Reinforcement Bars, Epoxy Coated		Pound		111
Concrete Substructure		Cu. Yds.		1.4



ILLINOIS DEPARTMENT OF TRANSPORTATION
ABUTMENTS B & C
INTERSTATE 80 OVER INTERSTATE 88
F.A.I. ROUTE 80 - SECTION 81-1HBY-D
ROCK ISLAND COUNTY
STATION 217+81.50
EB S.N. 081-0012 & WB 081-0013
DATE: FEBRUARY 27, 2008
DRAWN BY: A. Durbak
CHECKED BY: A. Yargioaglu

1 Revised, April 8, 2008.

PATRICK
ENGINEERING INC.
LISLE, ILLINOIS