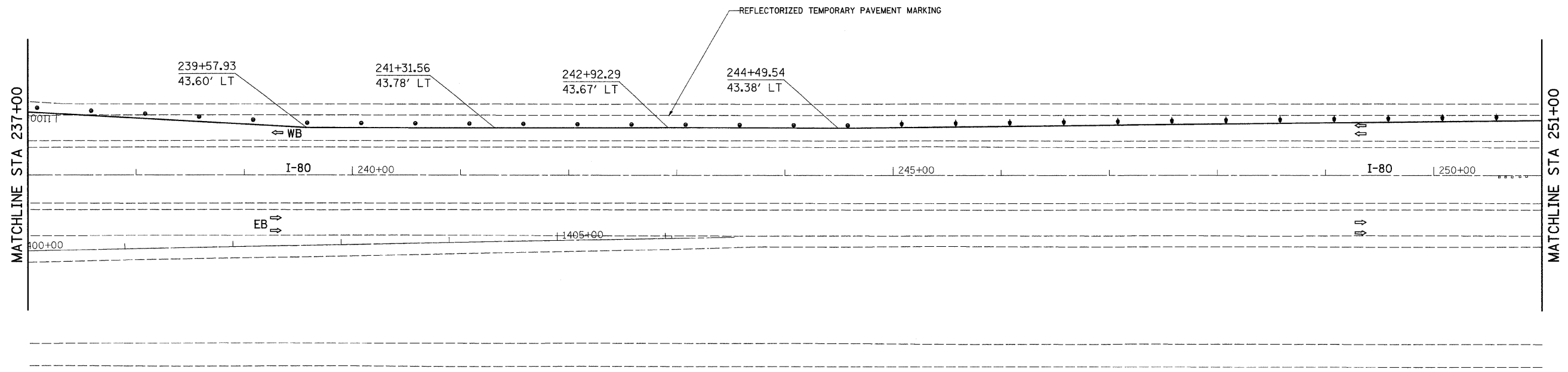
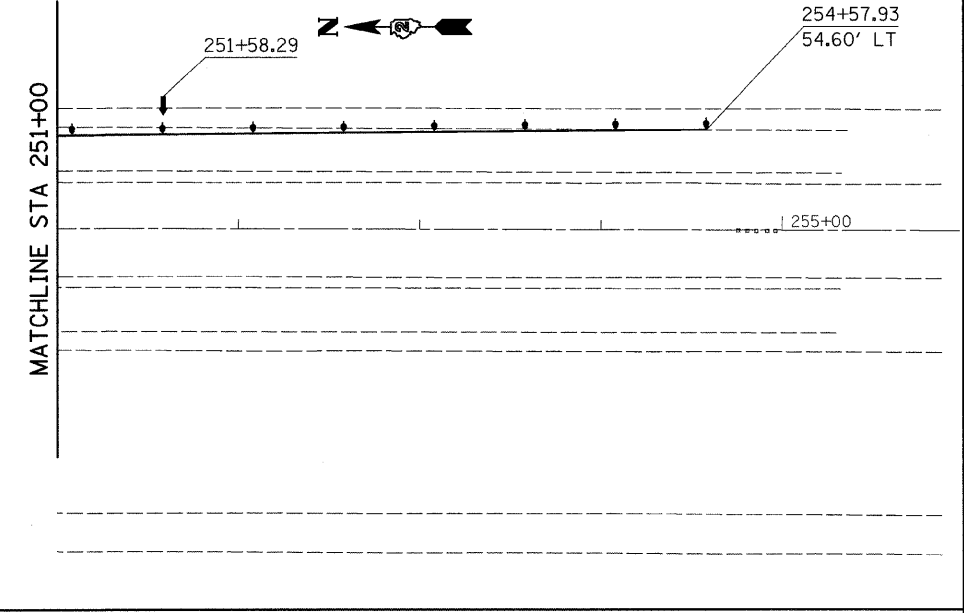


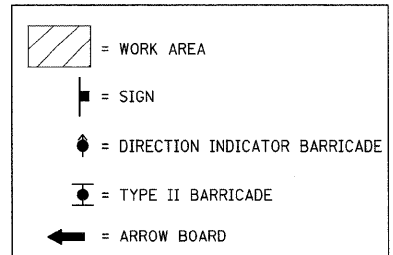
STAGE I



STAGING SEQUENCE OF WORK

STAGE I
 THIS STAGE SHALL BE CONSTRUCTED USING TRAFFIC CONTROL & PROTECTION STANDARD 70140L, 70110I AND THE TRAFFIC CONTROL PLAN WITHIN.

CONSTRUCT THE EXTERIOR 10' SHOULDER FROM
 I-80 EASTBOUND: RT STA 205+09 TO RT STA 215+24
 I-80 WESTBOUND: LT STA 220+51 TO LT STA 230+31



⚠ REVISIED SHEET 4/8/08

FILE NAME = C:\Projects\p200407\080407stg.dgn	USER NAME = jordanhd	DESIGNED -	REVISED -	STATE OF ILLINOIS DEPARTMENT OF TRANSPORTATION	I-80 STAGE I			F.A.I. RTE.	SECTION	COUNTY	TOTAL SHEETS	SHEET NO.
	PLOT SCALE = 50.0000' / IN.	CHECKED -	REVISED -					80	81-IHBY-D	ROCK ISLAND	120	59
	PLOT DATE = Tue Apr 01 13:45:58 2008	DATE -	REVISED -					FED. ROAD DIST. NO.	ILLINOIS FED. AID PROJECT	CONTRACT NO. 64C74		

SCALE: SHEET NO. OF SHEETS STA. TO STA.