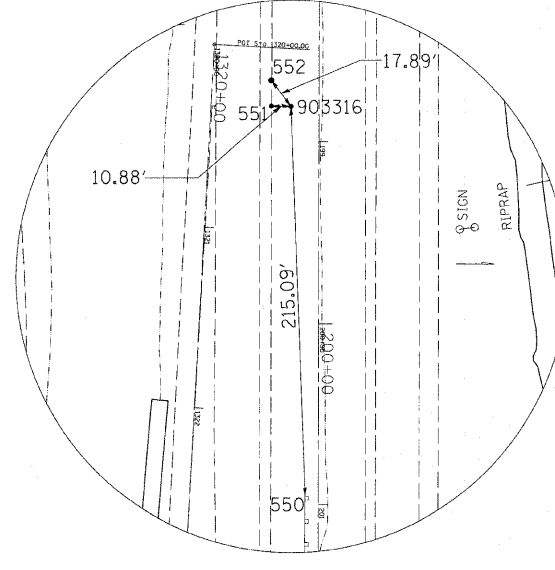
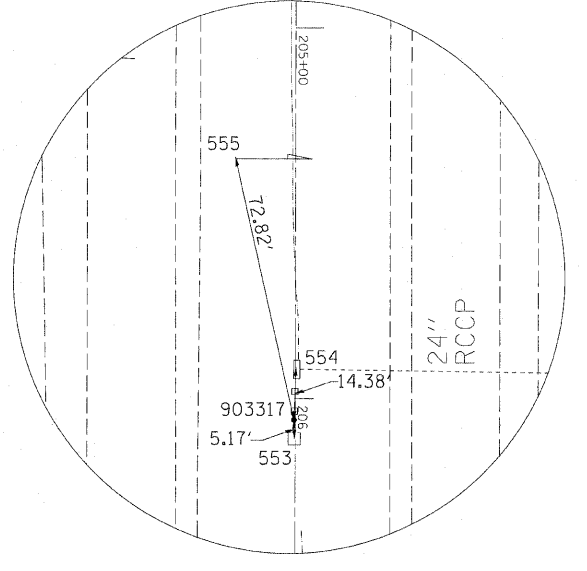


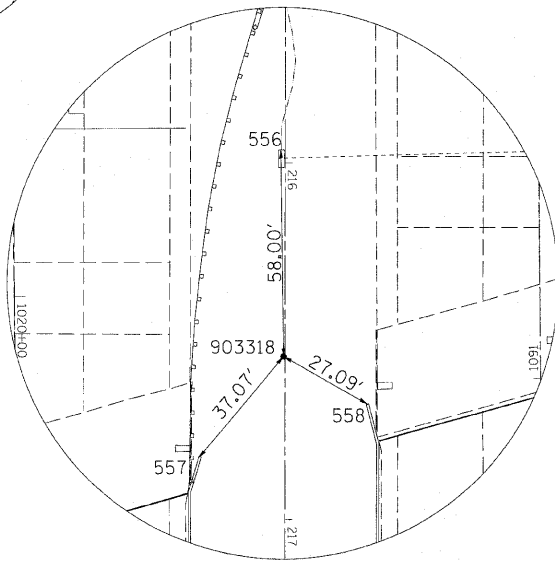
HORIZONTAL CONTROL POINT NO. 903315



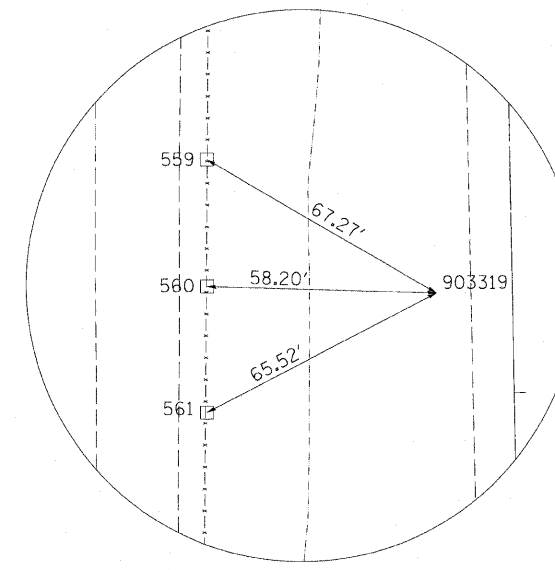
HORIZONTAL CONTROL POINT NO. 903316



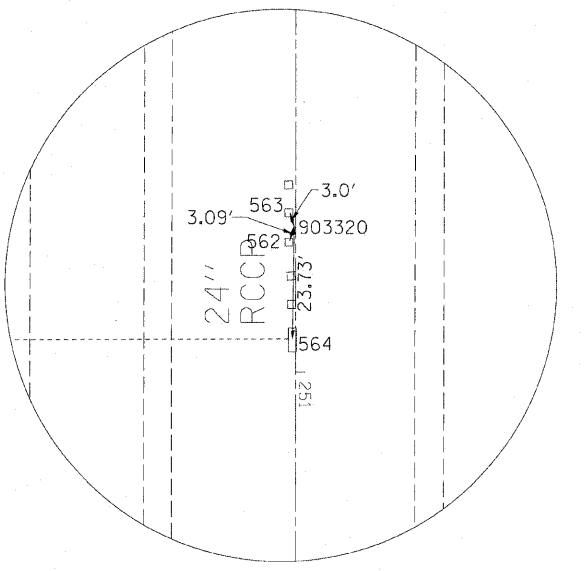
HORIZONTAL CONTROL POINT NO. 903317



HORIZONTAL CONTROL POINT NO. 903318



HORIZONTAL CONTROL POINT NO. 903319



HORIZONTAL CONTROL POINT NO. 903320

FILE NAME = C:\Projects\p202407\d02407nvo.dgn

USER NAME = jordanhd	DESIGNED -	REVISED -
PLOT SCALE = 50.0000' / IN.	DRAWN -	REVISED -
PLOT DATE = Thu Feb 28 13:16:31 2008	CHECKED -	REVISED -
	DATE -	REVISED -

**STATE OF ILLINOIS  
DEPARTMENT OF TRANSPORTATION**

**I-80 HORIZONTAL & VERTICAL CONTROL**

SCALE: \_\_\_\_\_ SHEET NO. \_\_\_\_ OF \_\_\_\_ SHEETS STA. \_\_\_\_\_ TO STA. \_\_\_\_\_

F.A.I. RTE. -90-	SECTION 81-IHBY-D	COUNTY ROCK ISLAND	TOTAL SHEETS 120	SHEET NO. 22
FED. ROAD DIST. NO. - ILLINOIS FED. AID PROJECT			CONTRACT NO. 64C74	