

PROJECT ENGINEER: REBECCA MARRUFFO

SQUAD LEADER: CHRIS CONDERMAN (815)-284-5955

F.A.P. RTE.	SECTION	COUNTY	TOTAL SHEETS	SHEET NO.
316	102T	LEE	41	1

6475

STATE OF ILLINOIS  
DEPARTMENT OF TRANSPORTATION  
DIVISION OF HIGHWAYS

# PROPOSED HIGHWAY PLANS

FAP ROUTE 316 (IL 26)  
SECTION 102T  
PROJECT ACNHF-0316(033)  
LEE COUNTY  
C-92-021-08

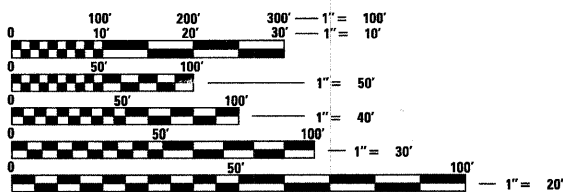


### INDEX

- 1 COVER SHEET
- 2 - 3 SUMMARY OF QUANTITIES
- 4 GENERAL NOTES
- 5 - 8 TYPICAL SECTIONS
- 9 - 10 SCHEDULE OF QUANTITIES
- 11 HORIZONTAL AND VERTICAL CONTROL
- 12 - 16 PLAN AND PROFILE
- 17 - 18 CULVERT DETAIL SHEETS
- 19 - 21 BORING LOGS
- 22 DETAIL OF HOT-MIX ASPHALT SHOULDER AT GUARD RAIL (23.4)  
HOT-MIX ASPHALT SHOULDERS (23.4g)  
DELINEATOR AND POST ORIENTATION (37.4)  
LETTERING FOR NAME PLATE (89.4)
- 23 EROSION CONTROL DETAILS FOR SILT FENCE (29.2)  
WITNESS MARKER & PERMANENT SURVEY MARKERS, TYPE II (66.2)  
STORM WATER POLLUTION PREVENTION PLAN (2.1)
- 24 TYPICAL PAVEMENT MARKINGS (41.1)
- 27 - 30 REMOVE AND REERECT STEEL PLATE BEAM GUARDRAIL (53.1)
- 31 - 41 CROSS SECTIONS

### STATE STANDARDS

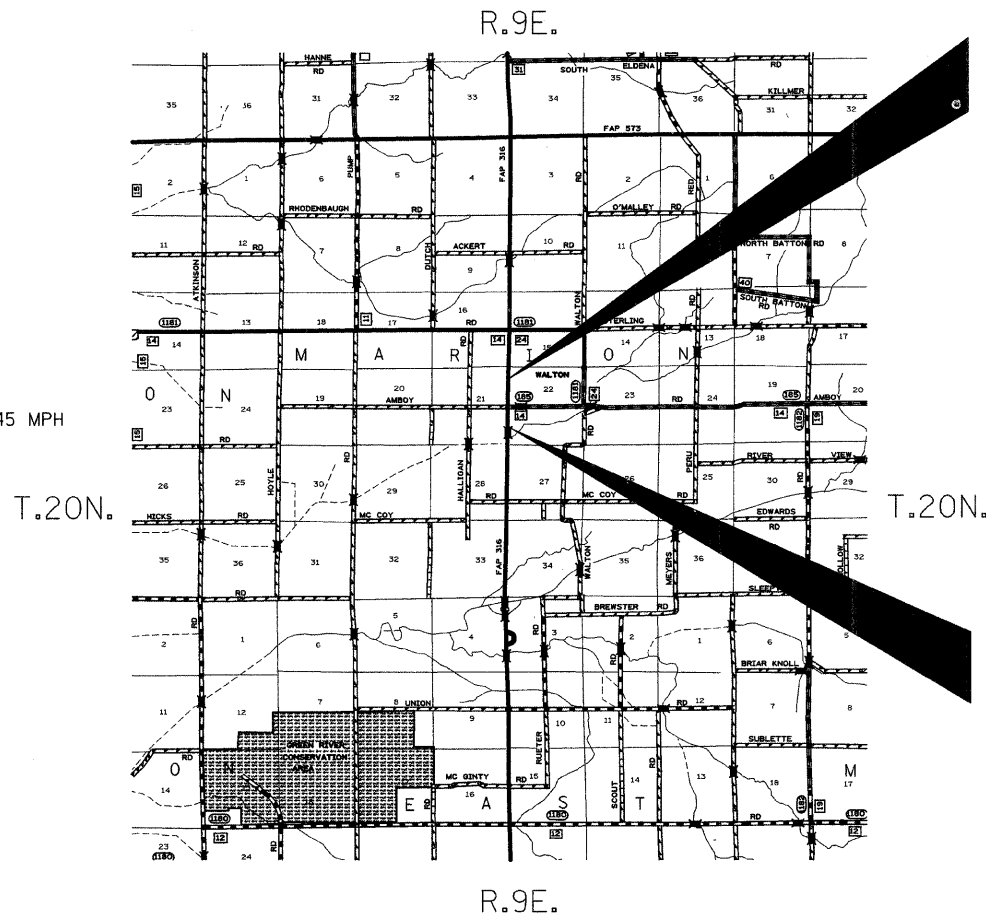
- 280001-04 TEMPORARY EROSION CONTROL SYSTEMS
- 442201-03 CLASS C AND D PATCHES
- 482001-02 HMA SHOULDER ADJACENT TO FLEXIBLE PAVEMENT
- 515001-02 NAME PLATE FOR BRIDGES
- 542401 METAL END SECTION FOR PIPE CULVERTS
- 630001-07 STEEL PLATE BEAM GUARDRAIL
- 630201-05 PCC/HMA STABILIZATION AT STEEL PLATE BEAM GUARDRAIL
- 630301-04 SHOULDER WIDENING FOR TYPE 1(SPECIAL) GUARDRAIL TERMINALS
- 631032-03 TRAFFIC BARRIER TERMINAL, TYPE 6A
- 635001 DELINEATORS
- 635006-02 REFLECTOR AND TERMINAL MARKER PLACEMENT
- 635011-01 REFLECTOR MARKER AND MOUNTING DETAILS
- 666001 RIGHT OF WAY MARKERS
- 667101 PERMANENT SURVEY MARKERS
- 701001-01 OFF-ROAD OPERATIONS, 2L, 2W, MORE THAN 4.5 M (15') AWAY
- 701006-02 OFF-ROAD OPERATIONS, 2L, 2W, 4.5 M (15') TO 600 MM (24") AWAY
- 701011-01 OFF-ROAD MOVING OPERATIONS, 2L, 2W, DAY ONLY
- 701201-02 LANE CLOSURE, 2L, 2W, DAY ONLY, FOR SPEEDS \* 45 MPH
- 701301-02 LANE CLOSURE, 2L, 2W, SHORT TIME OPERATIONS
- 701306-01 LANE CLOSURE, 2L, 2W, SLOW MOVING OPERATIONS DAY ONLY FOR SPEEDS \* 45 MPH
- 701311-02 LANE CLOSURE, 2L, 2W, MOVING OPERATIONS - DAY ONLY
- 701326-02 LANE CLOSURE, 2L, 2W, PAVEMENT WIDENING, FOR SPEEDS ≥ 45MPH
- 701901 TRAFFIC CONTROL DEVICES
- 720011 METAL POSTS FOR SIGNS, MARKERS AND DELINEATORS
- 780001-01 TYPICAL PAVEMENT MARKINGS
- 000001-05 STANDARD SYMBOLS, ABBREVIATIONS AND PATTERNS
- 001001-01 AREAS OF REINFORCEMENT BARS
- 001006 DECIMAL OF AN INCH AND OF A FOOT



FULL SIZE PLANS HAVE BEEN PREPARED USING STANDARD ENGINEERING SCALES. REDUCED SIZED PLANS WILL NOT CONFORM TO STANDARD SCALES. IN MAKING MEASUREMENTS ON REDUCED PLANS, THE ABOVE SCALES MAY BE USED.

J.U.L.I.E.  
JOINT UTILITY LOCATION INFORMATION FOR EXCAVATION  
1-800-892-0123

CONTRACT NO. 64C75



MARION TOWNSHIP, SECTION 21,22

GROSS LENGTH OF PROJECT = 3,844 LIN. FT. = 0.73 MILES  
NET LENGTH OF PROJECT = 1,544 LIN. FT. = 0.29 MILES

IMPROVEMENT BEGINS  
STA.455 + 00

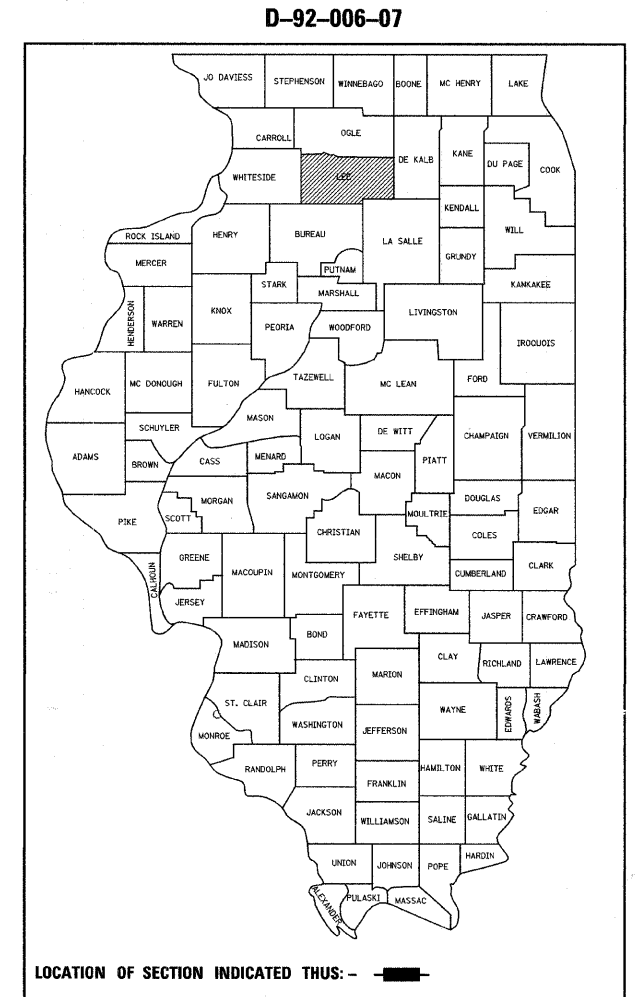
INCLUDES THE REMOVAL AND REPLACEMENT  
OF THE EXISTING BOX CULVERT  
EXISTING SN-052-1027  
PROPOSED SN-052-1097

IMPROVEMENT ENDS  
STA.460 + 00

IMPROVEMENT BEGINS  
STA.421 + 56

PLUG EXISTING CULVERT & REDITCH

IMPROVEMENT ENDS  
STA.432 + 00



LOCATION OF SECTION INDICATED THUS: - [black rectangle] -

STATE OF ILLINOIS  
DEPARTMENT OF TRANSPORTATION  
DIVISION OF HIGHWAYS

SUBMITTED 1-25 2008  
*George F. Ryan*  
DEPUTY DIRECTOR OF HIGHWAYS, REGION ENGINEER  
March 21, 2008  
*Eric E. Harms*  
SENIOR ENGINEER OF DESIGN AND ENVIRONMENT  
March 21, 2008  
*Christine M. Reed*  
DIRECTOR OF HIGHWAYS, CHIEF ENGINEER

PRINTED BY THE AUTHORITY  
OF THE STATE OF ILLINOIS