

INDEX OF SHEETS

SHEET NO.	DESCRIPTION
1.	COVER SHEET
2.	SUMMARY OF QUANTITIES
3.	GENERAL NOTES
4.	EXISTING PLAN & CROSS SECTION
5.	DECK EXISTING REPAIRS SURVEY
6.	DECK DELAMINATION SURVEY
7-12.	TRAFFIC CONTROL PLANS
13.	DISTRICT STANDARDS

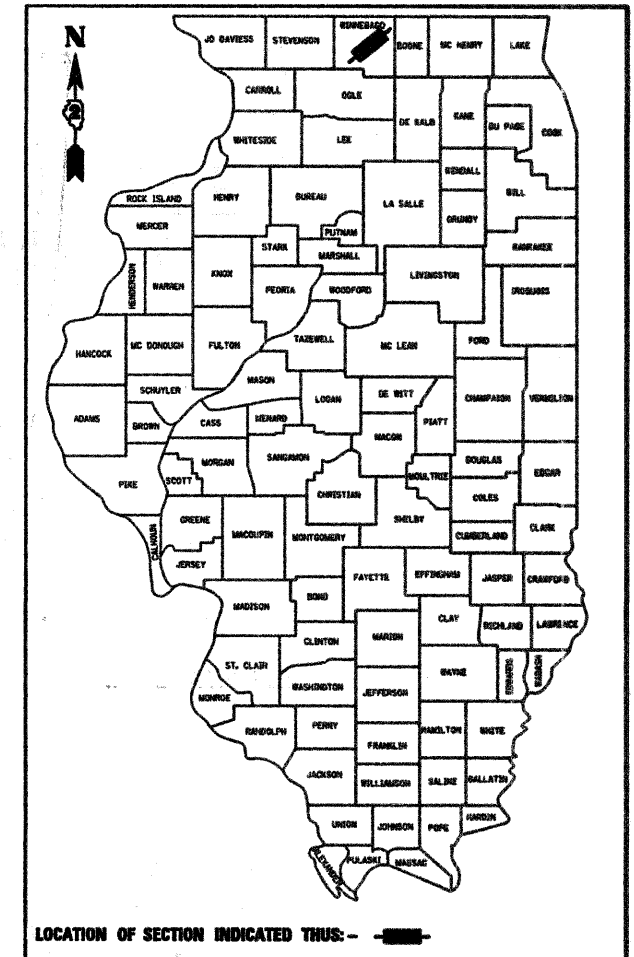
STATE OF ILLINOIS DEPARTMENT OF TRANSPORTATION

DIVISION OF HIGHWAYS PLANS FOR BRIDGE DECK WEARING SURFACE REMOVAL AND REPLACEMENT SN 101-0073 & 101-0074 CARRYING US 20 OVER THE KISHWAUKEE RIVER FAP 525 (US 20), SECTION (6B)M WINNEBAGO COUNTY

64D74

F.A.S. RTE.	SECTION	COUNTY	TOTAL SHEETS	SHEET NO.
U.S.20	(6B)M	WINNEBAGO	13	1

64D74



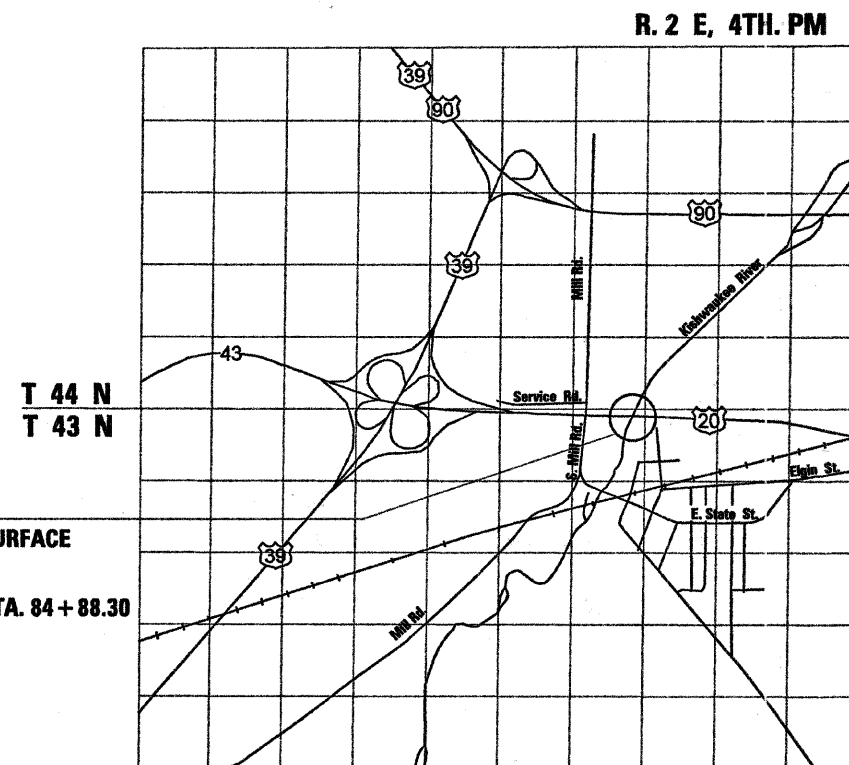
FUNCTIONAL CLASSIFICATION: MAJOR COLLECTOR (NON-URBAN)
DESIGN SPEED : 55 MPH
POSTED SPEED : 55 MPH
ADT : 20900 (2006)
PV : 80%
SU : 6%
MU : 8%

STANDARDS

- 701101-01 Off-Road Operations, Multilane, 4.5 m (15') to 600 mm (24") From Pavement Edge
- 701400-02 Approach to Lane Closure, Freeway/Expressway
- 701402-06 Lane Closure, Freeway/Expressway, with Barrier
- 701406-04 Lane Closure, Freeway/Expressway, Day Operations Only
- 701411-04 Lane Closure, Multilane, at Entrance or Exit Ramp, for Speeds > 45 MPH
- 701421-01 Lane Closure, Multilane, Day Operations Only, for Speeds > 45 MPH to 55 MPH
- 701423-02 Lane Closure, Multilane, with Barrier, for Speeds > 45 MPH to 55 MPH
- 701426-02 Lane Closure, Multilane, Intermittent or Moving Operation, for Speeds > 45 MPH
- 701901 Traffic Control Devices
- 704001-04 Temporary Concrete Barrier
- 720011 Metal Posts for Signs, Markers and Delimiters
- 728001 Telescoping Steel Sign Support
- 729001 Applications of Types A and B Metal Posts (For Signs & Markers)
- 780001-01 Typical Pavement Markings

PROJECT LOCATION

INCLUDES BRIDGE DECK WEARING SURFACE
REMOVAL AND REPLACEMENT
STR. NO. 101-0073 & 101-0074 AT STA. 84+88.30



JULIE 1-800-892-0123

DISTRICT 2

TOWNSHIP: CHERRY VALLEY

CONTRACT NO. 64D74

JOB NO. D-92-125-07 / C-92-126-07

PLANS PREPARED BY: SOODAN & ASSOCIATES, INC.
100 NORTH LASALLE ST., SUITE 1800
CHICAGO, ILLINOIS 60602



MOHAMMED SALEEM
ILLINOIS LICENSED
STRUCTURAL ENGINEER
NO. 081-006145
LICENSE EXP. 11-30-08

STATE OF ILLINOIS
DEPARTMENT OF TRANSPORTATION
DIVISION OF HIGHWAYS

SUBMITTED 1-25-08
George F. Ryan
DEPUTY DIRECTOR OF HIGHWAYS, REGION ENGINEER
March 21, 2008
Eric E. Havel
Interim ENGINEER OF DESIGN AND CONSTRUCTION
March 21, 2008
Christine M. Reed
DIRECTOR OF HIGHWAYS, CHIEF ENGINEER

PRINTED BY THE AUTHORITY
OF THE STATE OF ILLINOIS

STATE OF ILLINOIS
DEPARTMENT OF TRANSPORTATION

ROUTE NO.	SECTION	COUNTY	TOTAL SHEETS	SHEET NO.
U.S. 20	6B1M	WINNEBAGO COUNTY	13	2
FED. ROAD DIST. NO. 7	ILLINOIS	FED. AID PROJECT-		

CONTRACT • 64074

SUMMARY OF QUANTITY

SFTY-2A
100 / STATE

CODE NO.	ITEM	UNIT	QUANTITY
Z0006220	BRIDGE DECK HYDROSCARIFICATION 2 1/4"	SQ YD	1,463
50300260	BRIDGE DECK GROOVING	SQ YD	1,366
67000400	ENGINEER'S FIELD OFFICE, TYPE A	CAL MO	1
67100100	MOBILIZATION	L SUM	1
70100325	TRAFFIC CONTROL AND PROTECTION, STANDARD 701423	EACH	1
70100420	TRAFFIC CONTROL AND PROTECTION, STANDARD 701411	EACH	1
70100700	TRAFFIC CONTROL AND PROTECTION, STANDARD 701406	L SUM	1
70100805	TRAFFIC CONTROL AND PROTECTION, STANDARD 701402	L SUM	1
* 70300520	PAVEMENT MARKING TAPE, TYPE III 4"	FOOT	21,030
70400100	TEMPORARY CONCRETE BARRIER	FOOT	700
70400200	RELOCATE TEMPORARY CONCRETE BARRIER	FOOT	1400
* 78001110	PAINT PAVEMENT MARKING-LINE 4"	FOOT	5,000
78300100	PAVEMENT MARKING REMOVAL	SQ FT	1,485
X0322185	BRIDGE DECK LATEX CONCRETE OVERLAY, 2 1/4 INCHES	SQ YD	1,463
Z0016001	DECK SLAB REPAIR (FULL DEPTH, TYPE I)	SQ YD	8
* Z0030260	IMPACT ATTENUATORS, TEMPORARY (FULLY REDIRECTIVE, NARROW), TEST LEVEL 3	EACH	2
* Z0030330	IMPACT ATTENUATORS, RELOCATE (FULLY REDIRECTIVE), TEST LEVEL 3	EACH	4
Z0016200	DECK SLAB REPAIR (PARTIAL)	SQ YD	151
X0636700	CLEANING AND PAINTING BEARINGS	EACH	24

*SPECIALTY ITEM

DESIGNED	M.R./M.A.
CHECKED	M.S./H.T.
DRAWN	R.K./M.A.
CHECKED	M.S./H.T./M.R.

SUMMARY OF QUANTITIES
US 20 OVER KISHWAUKEE RIVER
FAP ROUTE 525 (US20), SECTION (6B)M
WINNEBAGO COUNTY
STATION 84+88.30
STRUCTURE NO. 101-0073 & 101-0074

SCALE: NONE DATE: JANUARY, 2008

Soodan & Associates, Inc.
100 North LaSalle Street, Suite 1800
Chicago, Illinois 60602

Soodan

STATE OF ILLINOIS
DEPARTMENT OF TRANSPORTATION

ROUTE NO.	SECTION	COUNTY	TOTAL SHEETS	SHEET NO.
U.S. 20	6B1M	WINNEBAGO COUNTY	13	3
FED. ROAD DIST. NO. 7		ILLINOIS	FED. AID PROJECT-	

CONTRACT # 64074

SHEET NO. 1
4 SHEETS

GENERAL NOTES

Plan dimensions and details relative to existing plans are subject to routine variations. The Contractor shall field verify existing dimensions and details affecting new construction and make necessary approved adjustments prior to construction or ordering of materials. Such variations shall not be cause for additional compensation for a change in scope of the work, however, the Contractor will be paid for the quantity actually furnished based upon the unit price bid for the work.

Engineer should record the deck repair areas in order to document as-built conditions for future reference.

The existing structural steel coating contains lead. The Contractor shall take appropriate precautions to deal with the presence of lead on this project.

Color of the paint used shall be Interstate Green, Munsell No. 7.5G 4/8.

SCOPE OF WORK

Utilizing staged construction remove & replace existing wearing surface with new Bridge Deck Latex Concrete Overlay, 2 1/4".
Clean & paint existing rocker bearing assembly at abutments.

DESIGNED	M.R./M.A.
CHECKED	M.S./H.T.
DRAWN	R.K./M.A.
CHECKED	M.S./H.T./M.R.

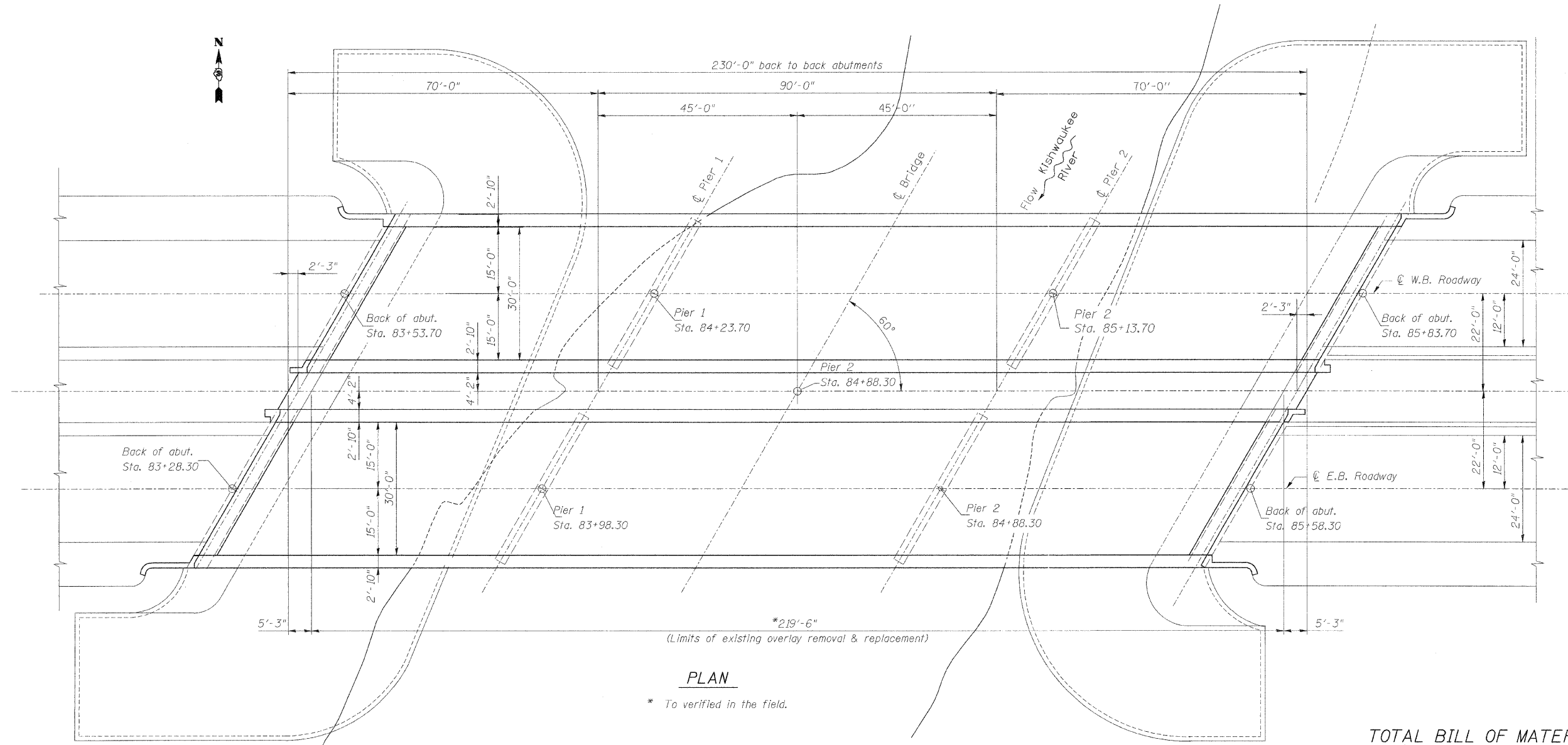
GENERAL NOTES

US 20 OVER KISHWAUKEE RIVER
FAP ROUTE 525 (US20), SECTION (6B)M
WINNEBAGO COUNTY
STATION 84+88.30
STRUCTURE NO. 101-0073 & 101-0074

SCALE: NONE DATE: JANUARY, 2008
Soodan Soodan & Associates, Inc.
100 North LaSalle Street, Suite 1800
Chicago, Illinois 60602

STATE OF ILLINOIS
DEPARTMENT OF TRANSPORTATION

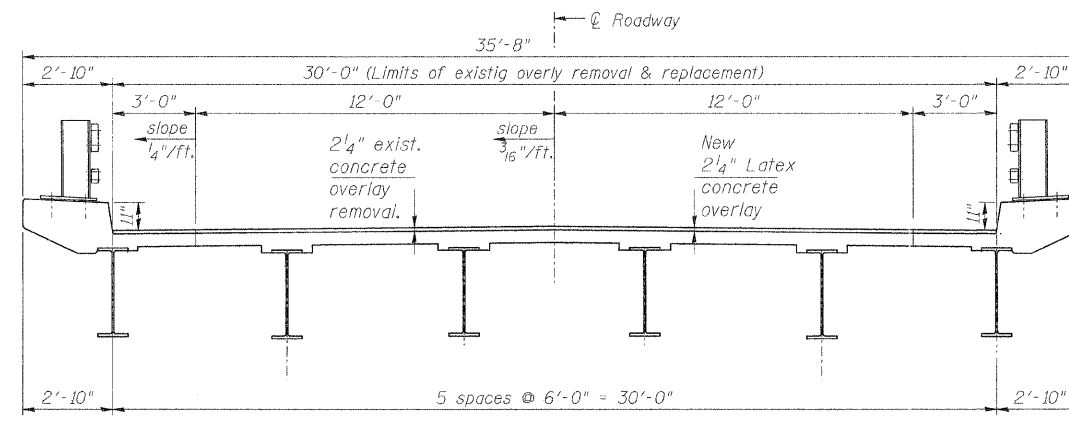
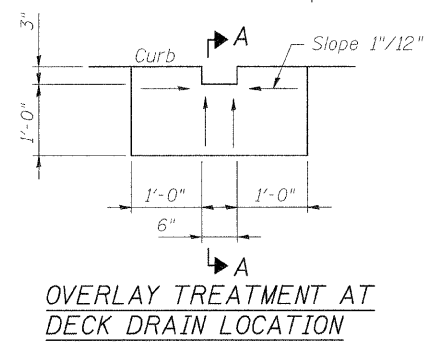
ROUTE NO.	SECTION	COUNTY	TOTAL SHEETS	SHEET NO.	SHEET NO. 2 4 SHEETS
U.S. 20	68BM	WINNEBAGO COUNTY	13	4	
FED. ROAD DIST. NO. 7	ILLINOIS	FED. AID PROJECT-			
CONTRACT # 64D74					



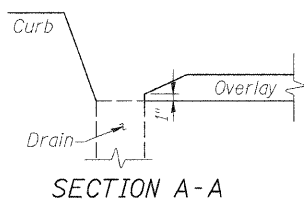
TOTAL BILL OF MATERIAL

ITEM	UNIT	QUANTITY
Bridge Deck Hydrosarcification, 2 1/4"	Sq. Yd.	1,463
Bridge Deck Latex Concrete Overlay, 2 1/4"	Sq. Yd.	1,463
Cleaning And Painting Existing Bearings	Each	24
Deck Slab Repair (Full Depth, Type I)	Sq. Yd.	8
Bridge Deck Grooving	Sq. Yd.	732
Deck Slab Repair (Partial) (For Information Only)	Sq. Yd.	149

Notes:
1. "Cleaning & Painting existing bearing" is only for abutments. There are 24 bearings altogether located at east & west abutments of Str. # 101-0073 & 101-0074.
See Special Provision "Cleaning & Painting Existing Steel Structures"



Note: 2'4" existing concrete overlay shall be removed and replaced with 2'4" Latex concrete overlay.

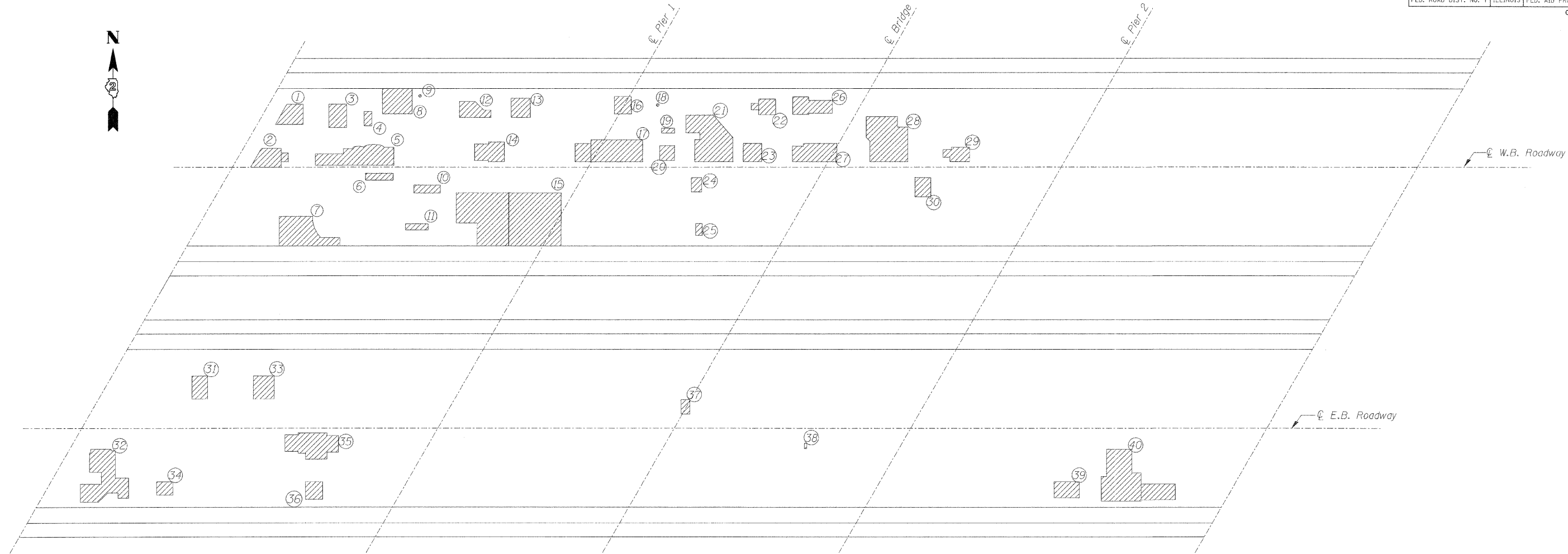


DESIGNED	M.R./M.A.
CHECKED	M.S./H.T.
DRAWN	R.K./M.A.
CHECKED	M.S./H.T./M.R.

EXISTING PLAN & CROSS SECTION
TOTAL BILL OF MATERIAL
US 20 OVER KISHWAUKEE RIVER
FAP ROUTE 525 (US20), SECTION (68)M
WINNEBAGO COUNTY
STATION 84+88.30
STRUCTURE NO. 101-0073 & 101-0074

STATE OF ILLINOIS
DEPARTMENT OF TRANSPORTATION

ROUTE NO.	SECTION	COUNTY	TOTAL SHEETS	SHEET NO.	SHEET NO. 3 4 SHEETS
U.S. 20	6BM	WINNEBAGO COUNTY	13	5	
FED. ROAD DIST. NO. 7		ILLINOIS	FED. AID PROJECT-		CONTRACT # 64D74



DECK EXISTING REPAIRS SURVEY
(June 26 thru 27, 2007)

LEGEND

 Existing Repairs

EXISTING REPAIRS
(For information only)

S.No	AREA (SF)	S.No	AREA (SF)
1.	16.0	21	4.0
2.	19.5	22	11.5
3.	14.8	23	12.25
4.	4.0	24	5.5
5.	46.0	25	3.0
6.	7.0	26	21.25
7.	45.5	27	28.7
8.	27.0	28	62.0
9.	0.2	29	12.2
10.	8.0	30	11.0
11	5.0	31	13.25
12.	15.0	32	55.0
13.	13.5	33	17.66
14.	20.0	34	7.7
15.	184.0	35	41.0
16.	11.0	36	11.0
17.	52.5	37	4.5
18.	0.2	38	0.5
19.	2.3	39	14.5
20.	8.0	40	81.0

DESIGNED	M.R./M.A.
CHECKED	M.S./H.T.
DRAWN	R.K./M.A.
CHECKED	M.S./H.T./M.R.

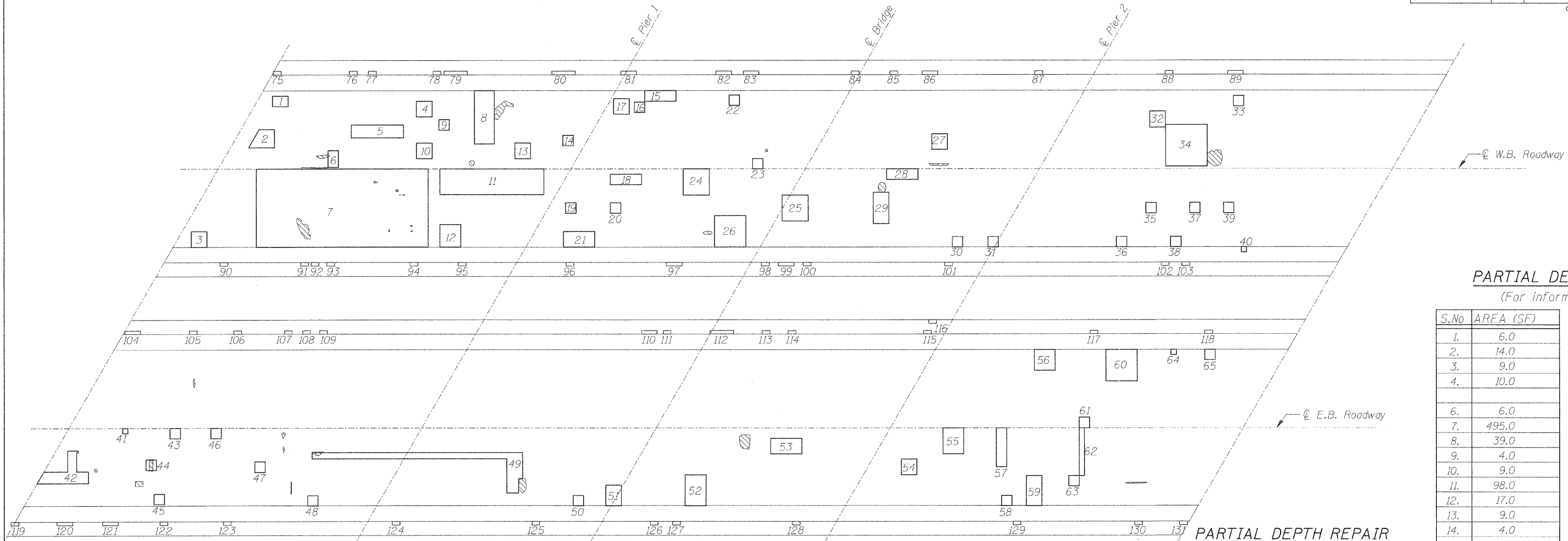
DECK EXISTING REPAIRS SURVEY
US 20 OVER KISHWAUKEE RIVER
FAP ROUTE 525 (US20), SECTION (6BM)
WINNEBAGO COUNTY
STATION 84+88.30
STRUCTURE NO. 101-0073 & 101-0074

SCALE: NONE DATE: JANUARY, 2008

Soodan
Soodan & Associates, Inc.
100 North LaSalle Street, Suite 1800
Chicago, Illinois 60602

STATE OF ILLINOIS
DEPARTMENT OF TRANSPORTATION

ROUTE NO.	SECTION	COUNTY	TOTAL SHEETS	SHEET NO.	SHEET NO. 4 4 SHEETS
U.S. 20	6B/M	WINNEBAGO COUNTY	13	6	
FED. ROAD DIST. NO. 7	ILLINOIS	FED. AID PROJECT-			
CONTRACT * 64D74					



DECK DELAMINATION SURVEY
(June 26 thru 27, 2007)

FULL DEPTH REPAIR

S.No	AREA (SF)
5.	24.0

LEGEND

* Spalled Area

PARTIAL DEPTH REPAIR
(For information only)

S.No	AREA (SF)	S.No	AREA (SF)
1.	6.0	33.	4.0
2.	14.0	34.	64.0
3.	9.0	35.	4.0
4.	10.0	36.	4.0
		37.	4.0
6.	6.0	38.	4.0
7.	495.0	39.	4.0
8.	39.0	40.	1.0
9.	4.0	41.	1.0
10.	9.0	42.	28.0
11.	98.0	43.	4.0
12.	17.0	44.	4.0
13.	9.0	45.	4.0
14.	4.0	46.	4.0
15.	12.0	47.	4.0
16.	4.0	48.	4.0
17.	9.0	49.	65.0
18.	12.0	50.	4.0
19.	4.0	51.	12.0
20.	4.0	52.	24.0
21.	18.0	53.	18.0
22.	4.0	54.	9.0
23.	4.0	55.	20.0
24.	25.0	56.	16.0
25.	25.0	57.	15.0
26.	36.0	58.	4.0
27.	9.0	59.	17.0
28.	12.0	60.	36.0
29.	18.0	61.	4.0
30.	4.0	62.	9.0
31.	4.0	63.	4.0
32.	9.0	64.	1.0
		65.	4.0

PARTIAL DEPTH REPAIR
(For information only)

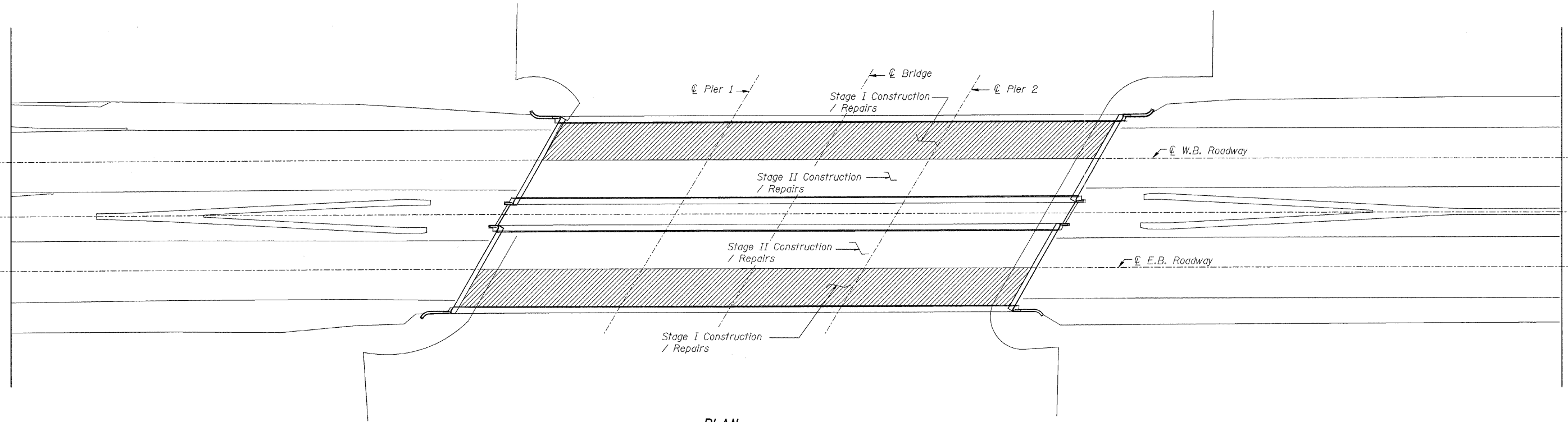
S.No	AREA (SF)	S.No	AREA (SF)
75.	1.0	103.	1.0
76.	1.0	104.	2.0
77.	1.0	105.	1.0
78.	1.0	106.	1.0
79.	3.0	107.	1.0
80.	3.0	108.	1.0
81.	2.0	109.	1.0
82.	2.0	110.	2.0
83.	2.0	111.	1.0
84.	1.0	112.	3.0
85.	1.0	113.	1.0
86.	2.0	114.	1.0
87.	1.0	115.	1.0
88.	1.0	116.	1.0
89.	2.0	117.	1.0
90.	1.0	118.	1.0
91.	1.0	119.	1.0
92.	1.0	120.	2.0
93.	1.0	121.	2.0
94.	1.0	122.	1.0
95.	1.0	123.	1.0
96.	1.0	124.	1.0
97.	2.0	125.	1.0
98.	1.0	126.	1.0
99.	2.0	127.	1.0
100.	1.0	128.	1.0
101.	1.0	129.	1.0
102.	1.0	130.	1.0
		131.	1.0

DESIGNED	M.R./M.A.
CHECKED	M.S./H.T.
DRAWN	R.K./M.A.
CHECKED	M.S./H.T./M.R.

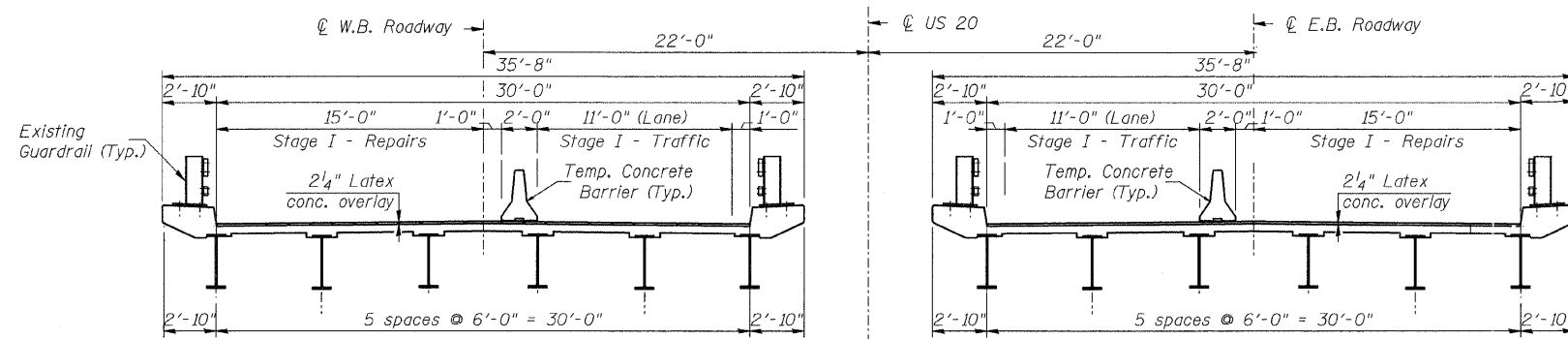
DECK DELAMINATION SURVEY
US 20 OVER KISHWAUKEE RIVER
FAP ROUTE 525 (US20), SECTION (6B/M)
WINNEBAGO COUNTY
STATION 84+88.30
STRUCTURE NO. 101-0073 & 101-0074

STATE OF ILLINOIS
DEPARTMENT OF TRANSPORTATION

ROUTE NO.	SECTION	COUNTY	TOTAL SHEETS	SHEET NO.
U.S. 20	681M	WINNEBAGO COUNTY	13	7
FED. ROAD DIST. NO. 7	ILLINOIS	FED. AID PROJECT-	CONTRACT # 64074	



PLAN
STAGE I CONSTRUCTION / REPAIRS



TYPICAL CROSS SECTION, STAGE I CONSTRUCTION / REPAIRS
(Looking East)

Note: During Stage I Construction / Repairs, existing wearing surface will be removed and replaced with 2 1/4" Latex conc. overlay.

DESIGNED	M.R./M.A.
CHECKED	M.S./H.T.
DRAWN	R.K./M.A.
CHECKED	M.S./H.T./M.R.

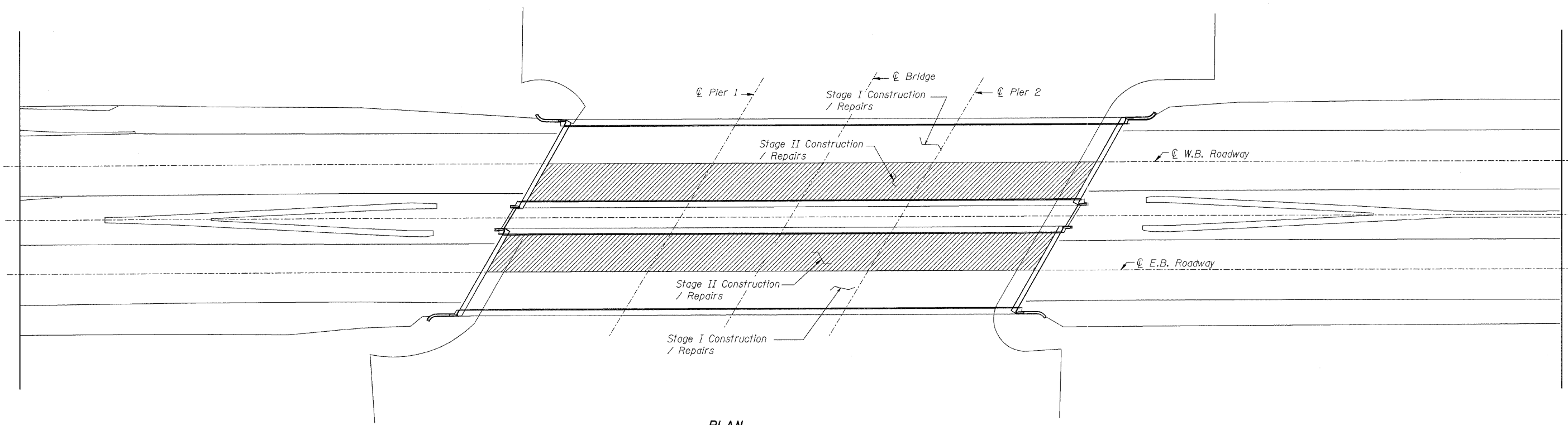
TRAFFIC CONTROL PLAN 1 OF 6
US 20 OVER KISHWAUKEE RIVER
FAP ROUTE 525 (US20), SECTION (681M)
WINNEBAGO COUNTY
STATION 84+88.30
STRUCTURE NO. 101-0073 & 101-0074

SCALE: NONE DATE: JANUARY, 2008
Soodan & Associates, Inc.
100 North LaSalle Street, Suite 1800
Chicago, Illinois 60602

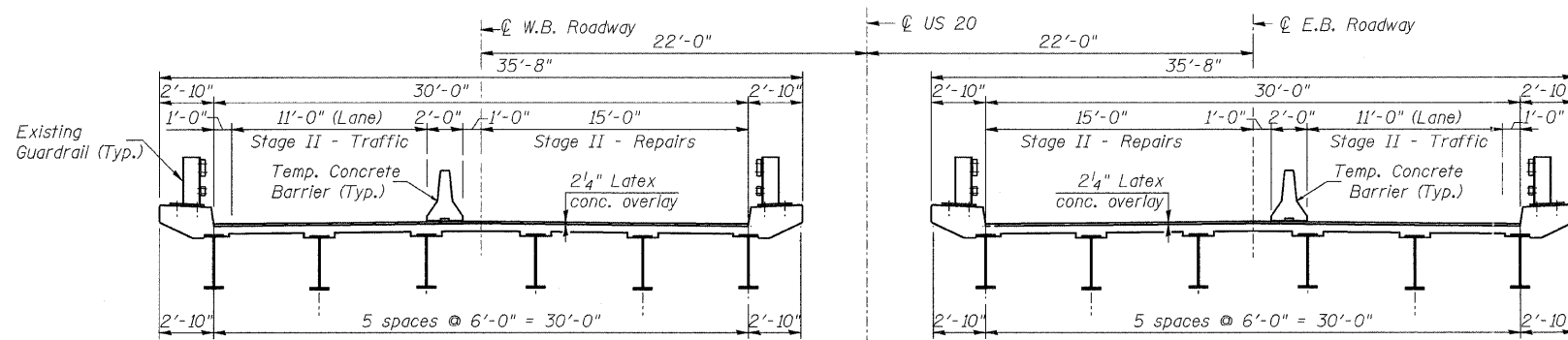
STATE OF ILLINOIS
DEPARTMENT OF TRANSPORTATION

ROUTE NO.	SECTION	COUNTY	TOTAL SHEETS	SHEET NO.
U.S. 20	6BIM	WINNEBAGO COUNTY	13	8
FED. ROAD DIST. NO. 7		ILLINOIS	FED. AID PROJECT-	

CONTRACT # 64074



PLAN
STAGE II CONSTRUCTION / REPAIRS



TYPICAL CROSS SECTION, STAGE II CONSTRUCTION / REPAIRS

(Looking East)

Note: During Stage II Construction / Repairs, existing wearing surface will be removed and replaced with 2 1/4" Latex conc. overlay.

DESIGNED	M.R./M.A.
CHECKED	M.S./H.T.
DRAWN	R.K./M.A.
CHECKED	M.S./H.T./M.R.

TRAFFIC CONTROL PLAN 2 OF 6

US 20 OVER KISHWAUKEE RIVER
FAP ROUTE 525 (US20), SECTION (6BIM)
WINNEBAGO COUNTY
STATION 84+88.30
STRUCTURE NO. 101-0073 & 101-0074

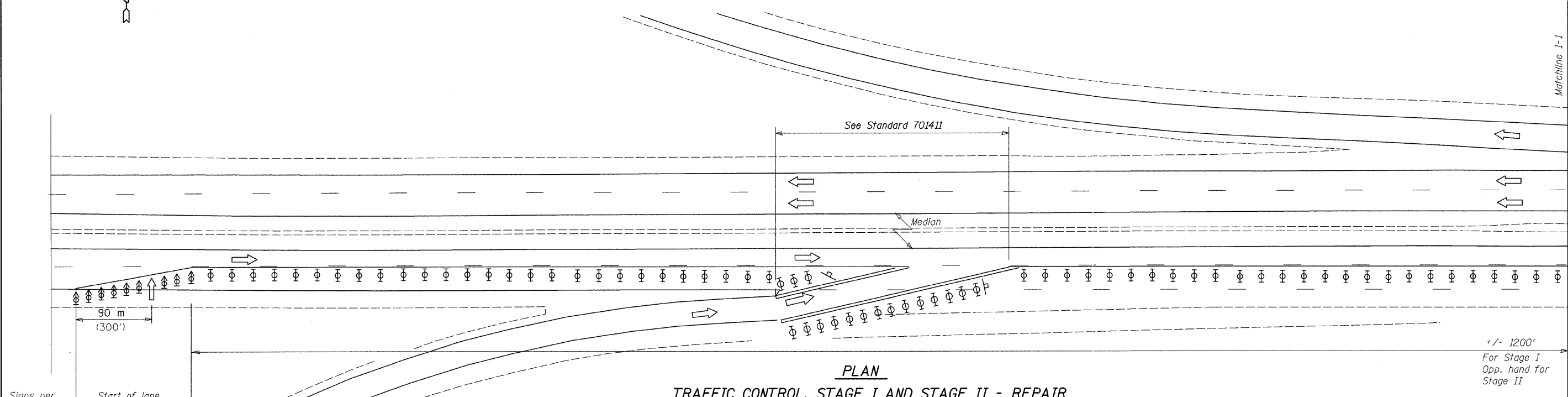
SCALE: NONE DATE: JANUARY, 2008

Soodan
Soodan & Associates, Inc.
100 North LaSalle Street, Suite 1800
Chicago, Illinois 60602

STATE OF ILLINOIS
DEPARTMENT OF TRANSPORTATION

ROUTE NO.	SECTION	COUNTY	TOTAL SHEETS	SHEET NO.
U.S. 20	6BIM	WINNEBAGO COUNTY	13	9
FED. ROAD DIST. NO. 7		ILLINOIS	FED. AID PROJECT-	

CONTRACT # 64074



PLAN
TRAFFIC CONTROL, STAGE I AND STAGE II - REPAIR

Signs per 701423

Start of lane closure taper

+/- 1200'
For Stage I
Opp. hand for
Stage II

STAGE I CONSTRUCTION SEQUENCE

1. Install Standard 701423-02.
2. Remove & replace existing wearing surface of Stage I area.
3. Relocate Standard 701423-02 to Stage II.
4. Place temporary pavement marking.
5. Switch traffic to Stage II.

STAGE II CONSTRUCTION SEQUENCE

1. Remove & replace existing wearing surface of Stage II area.
2. Remove Standard 701423-02.
3. Place temporary pavement marking.

- ① Undivided roadway only with left lane closure in opposite direction.
- ② Sign in median may be omitted when median is less than 3 m (10').
- ③ Temporary pavement marking tape shall be placed throughout the taper and along-side the work area. The right edge line shall be white and the left edge line shall be yellow.
- ④ Barrier wall/guardrail markers at 7.6 m (25'). Markers on right shall be crystal and markers on left shall be amber. See Standards 704001 and 635001.

NORMAL FORMULAS
POSTED SPEED Metric English

45 mph or more $L = 0.65WS$ $L = WS$

W = Width of offset in meters (feet).

S = Normal posted speed in mph.

TEMPORARY CONCRETE BARRIER

Stage I
SN 101-0073 Total 350 Ft
SN 101-0074 Total 350 Ft

RELOCATE TEMPORARY CONCRETE BARRIER

Temporary Storage and Stage II
SN 101-0073 Total 700 Ft
SN 101-0074 Total 700 Ft

IMPACT ATTENUATOR (TEMPORARY)

Stage I
SN 101-0073 Total 1 Each
SN 101-0074 Total 1 Each

IMPACT ATTENUATOR (RELOCATE)

Temporary Storage and Stage II
SN 101-0073 Total 2 Each
SN 101-0074 Total 2 Each

PAVEMENT MARKING REMOVAL

Stage I
SN 101-0073 Total 205 Ft (Median edge line, taper)
SN 101-0074 Total 550 Ft (Median edge line, taper)

Stage II
SN 101-0073 Total 130 Ft (Outer edge line, taper & bridge)
SN 101-0074 Total 600 Ft (Outer edge line, taper & bridge)

PAVEMENT MARKING TAPE, TYPE III 4"

Direction of Traffic	Stage I	Stage II	Location
Westbound	1705	610	North edgeline
Westbound	610	1705	South edgeline
Eastbound	1800	2285	North edgeline
Eastbound	2285	610	South edgeline
Subtotal	5210	5210	
Total	11610	9420	

PAINT PAVEMENT MARKING LINE 4"

SN 101-0073 Total 2500 Ft (Edge lines & centerline)
SN 101-0074 Total 2500 Ft (Edge lines & centerline)

SYMBOLS

- Arrow board
- Work area
- Sign
- Direction indicator barricade with steady burn monodirectional light
- Temporary concrete barrier
- Type II barricade, drum, or vertical barricade with steady burn monodirectional light
- Monodirectional barrier wall/guardrail marker
- Impact attenuator

Use Standard 701423-02 as modified in traffic control plan

DESIGNED	M.R./M.A.
CHECKED	M.S./H.T.
DRAWN	R.K./M.A.
CHECKED	M.S./H.T./M.R.

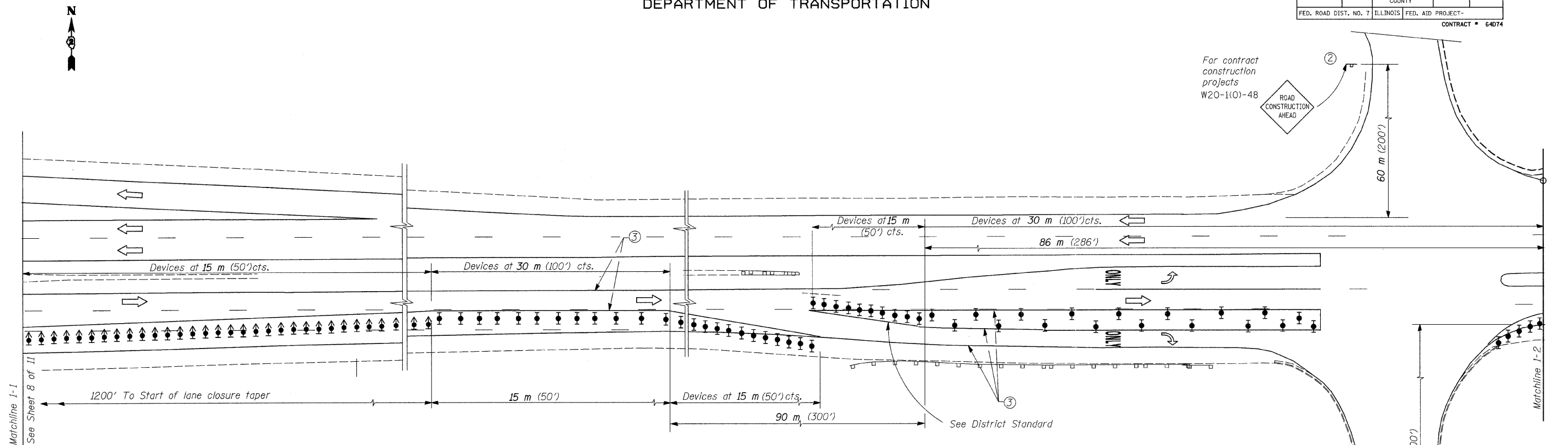
TRAFFIC CONTROL PLAN 3 OF 6
US 20 OVER KISHWAUKEE RIVER
FAP ROUTE 525 (US20), SECTION (6BIM)
WINNEBAGO COUNTY
STATION 84+88.30
STRUCTURE NO. 101-0073 & 101-0074

SCALE: NONE DATE: JANUARY, 2008
Soodan Soodan & Associates, Inc.
100 North LaSalle Street, Suite 1800
Chicago, Illinois 60602

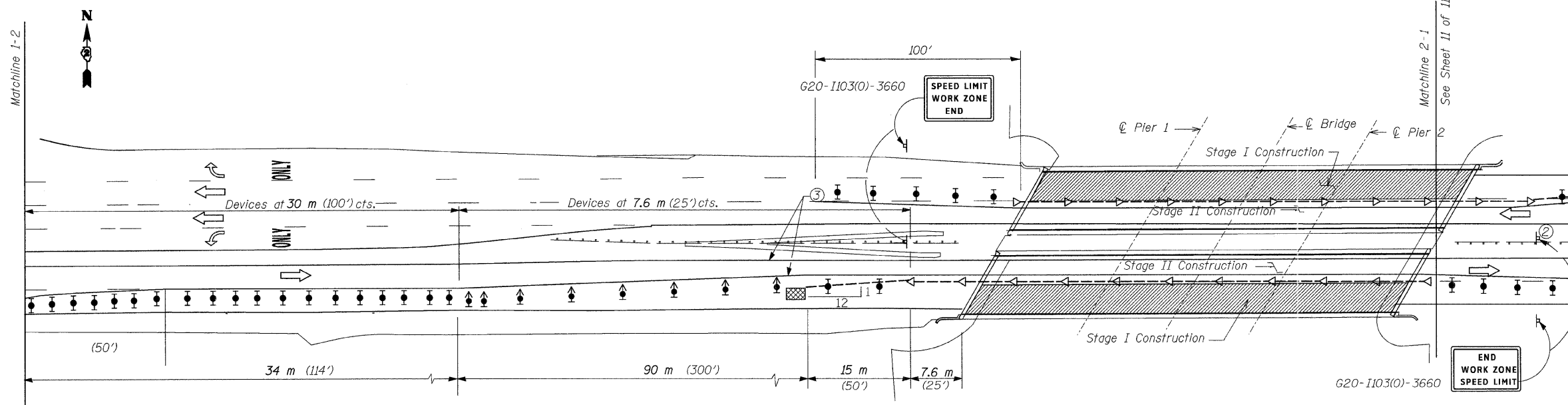
STATE OF ILLINOIS
DEPARTMENT OF TRANSPORTATION

ROUTE NO.	SECTION	COUNTY	TOTAL SHEETS	SHEET NO.
U.S. 20	6B1M	WINNEBAGO COUNTY	13	10
FED. ROAD DIST. NO. 7	ILLINOIS	FED. AID PROJECT-		

CONTRACT # 64074



PLAN
TRAFFIC CONTROL, STAGE I REPAIRS



PLAN
TRAFFIC CONTROL, STAGE I REPAIRS

DESIGNED	M.R./M.A.
CHECKED	M.S./H.T.
DRAWN	R.K./M.A.
CHECKED	M.S./H.T./M.R.

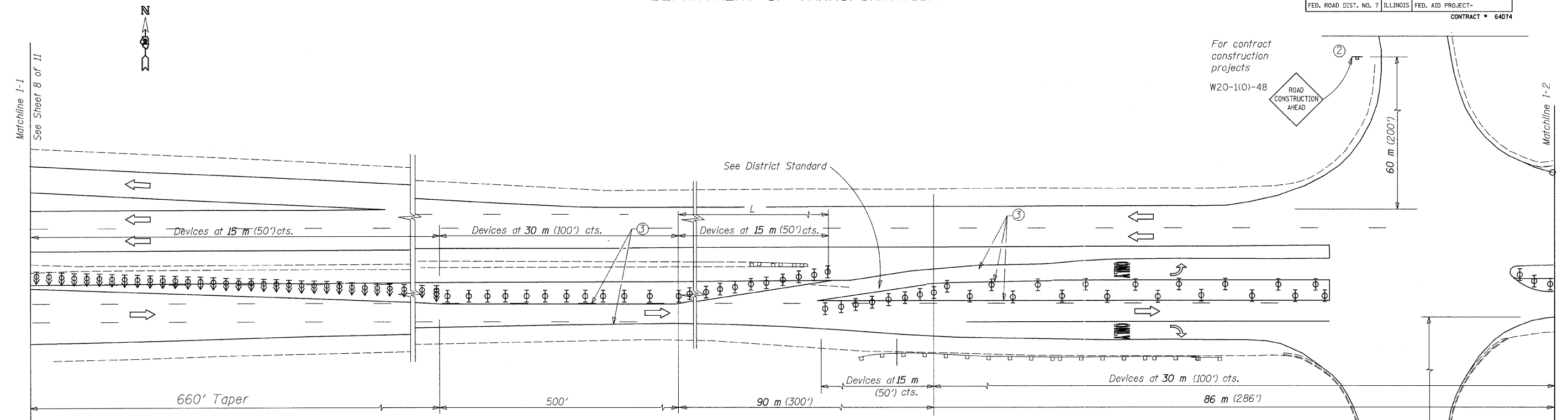
TRAFFIC CONTROL PLAN 4 OF 6
US 20 OVER KISHWAUKEE RIVER
FAP ROUTE 525 (US20), SECTION (6B1M)
WINNEBAGO COUNTY
STATION 84+88.30
STRUCTURE NO. 101-0073 & 101-0074

SCALE: NONE DATE: JANUARY, 2008
Soodan & Associates, Inc.
100 North LaSalle Street, Suite 1800
Chicago, Illinois 60602

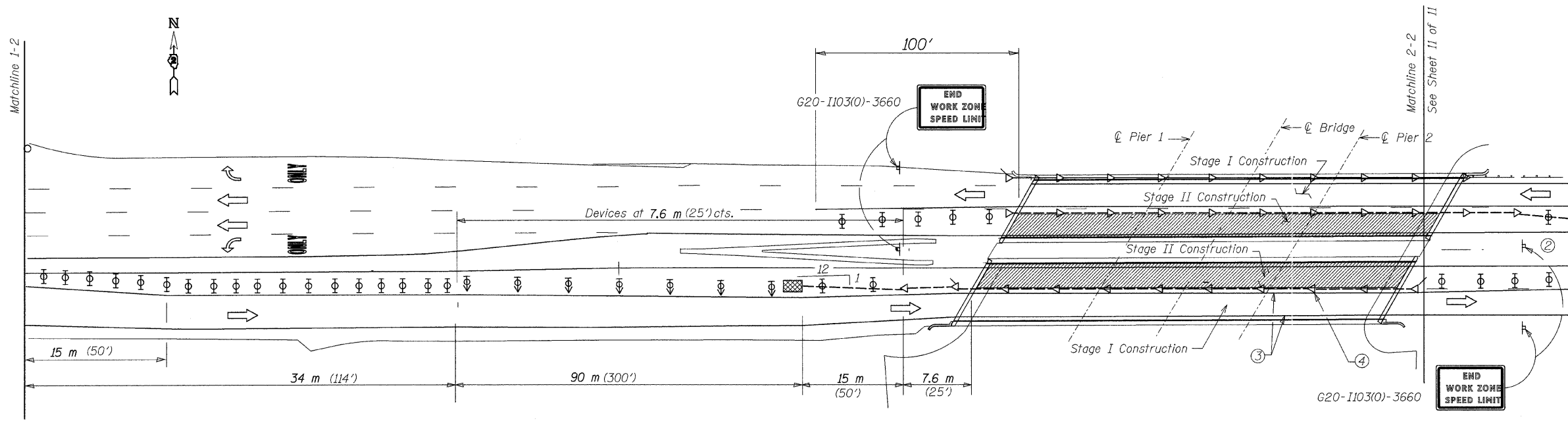
STATE OF ILLINOIS
DEPARTMENT OF TRANSPORTATION

ROUTE NO.	SECTION	COUNTY	TOTAL SHEETS	SHEET NO.
U.S. 20	68BM	WINNEBAGO COUNTY	13	11
FED. ROAD DIST. NO. 7		ILLINOIS	FED. AID PROJECT-	

CONTRACT # 64074



PLAN
TRAFFIC CONTROL, STAGE II REPAIR



PLAN
TRAFFIC CONTROL, STAGE II REPAIR

DESIGNED	M.R./M.A.
CHECKED	M.S./H.T.
DRAWN	R.K./M.A.
CHECKED	M.S./H.T./M.R.

TRAFFIC CONTROL PLAN 5 OF 6
US 20 OVER KISHWAUKEE RIVER
FAP ROUTE 525 (US20), SECTION (68BM)
WINNEBAGO COUNTY
STATION 84+88.30
STRUCTURE NO. 101-0073 & 101-0074

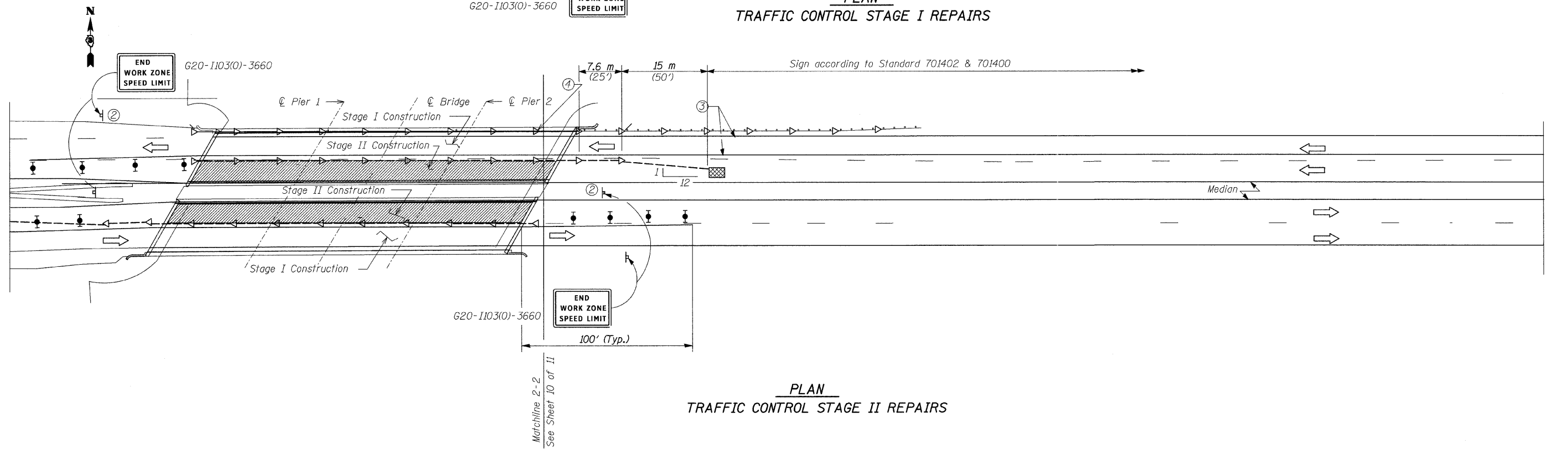
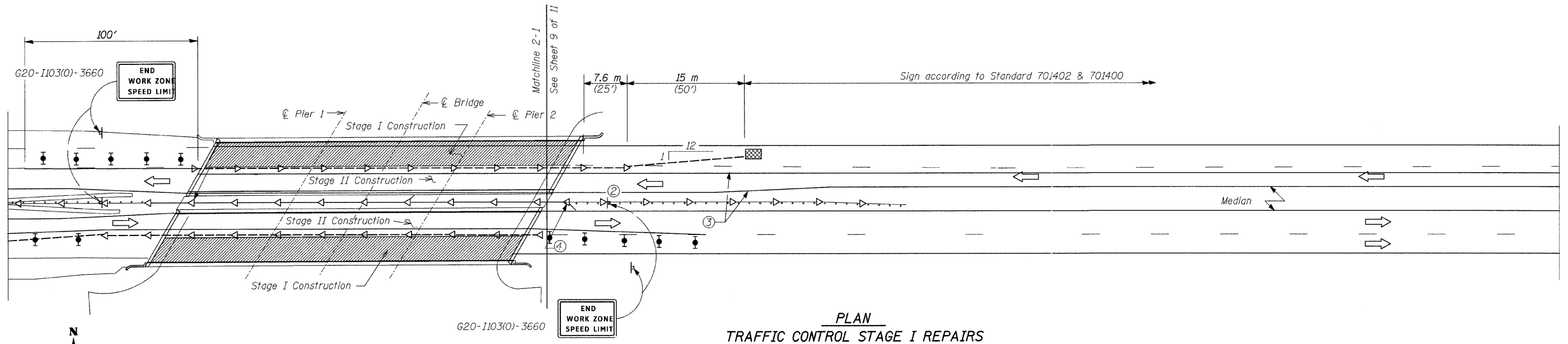
SCALE: NONE DATE: JANUARY, 2008

Soodan
Soodan & Associates, Inc.
100 North LaSalle Street, Suite 1800
Chicago, Illinois 60602

STATE OF ILLINOIS
DEPARTMENT OF TRANSPORTATION

ROUTE NO.	SECTION	COUNTY	TOTAL SHEETS	SHEET NO.
U.S. 20	68BM	WINNEBAGO COUNTY	13	12
FED. ROAD DIST. NO. 7		ILLINOIS	FED. AID PROJECT-	

CONTRACT # 64074



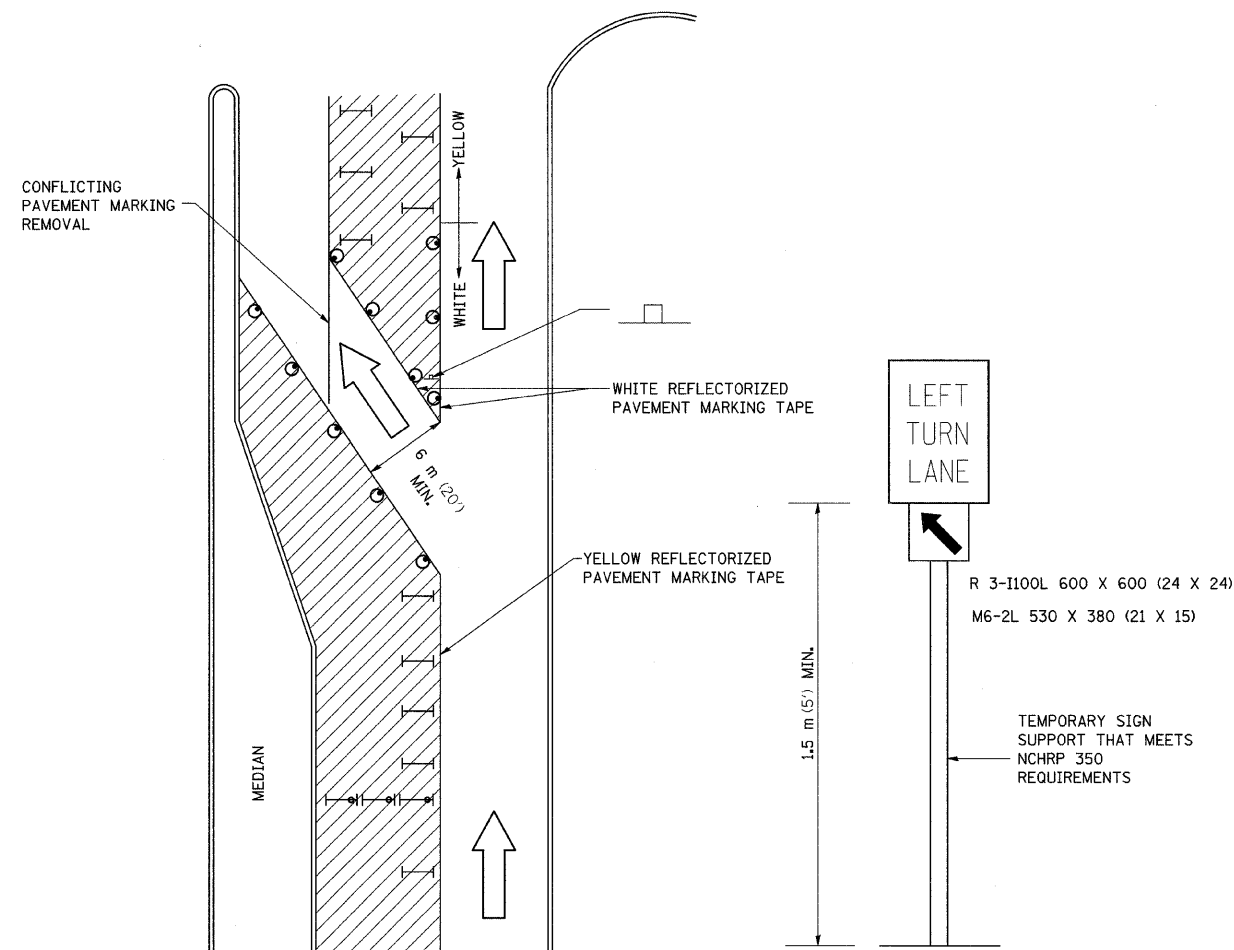
DESIGNED	M.R./M.A.
CHECKED	M.S./H.T.
DRAWN	R.K./M.A.
CHECKED	M.S./H.T./M.R.

TRAFFIC CONTROL PLAN 6 OF 6
US 20 OVER KISHWAUKEE RIVER
FAP ROUTE 525 (US20), SECTION (68BM)
WINNEBAGO COUNTY
STATION 84+88.30
STRUCTURE NO. 101-0073 & 101-0074

SCALE: NONE DATE: JANUARY, 2008

Soodan
Soodan & Associates, Inc.
100 North LaSalle Street, Suite 1800
Chicago, Illinois 60602

TRAFFIC CONTROL AND PROTECTION AT TURN BAYS (TO REMAIN OPEN TO TRAFFIC)



LEGEND

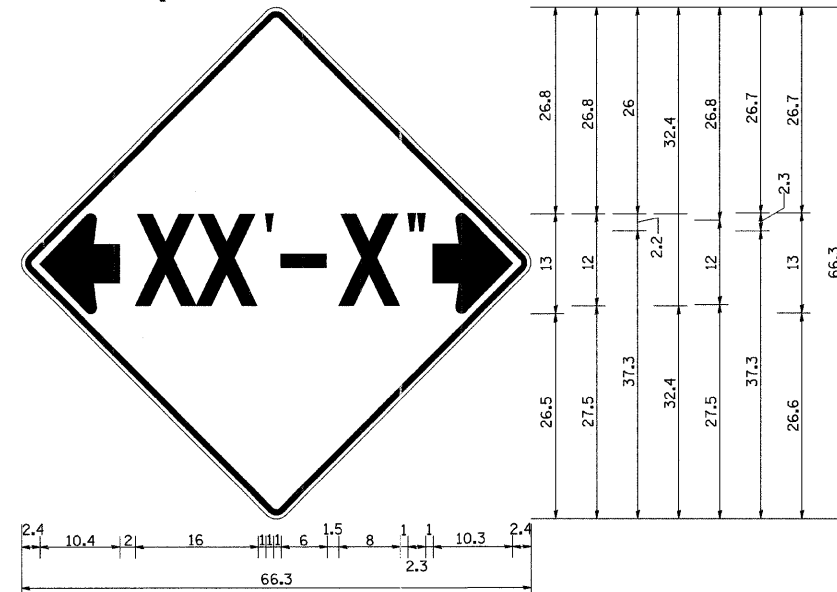
- WORK AREA
- LANE OPEN TO TRAFFIC
- TYPE I OR II BARRICADE OR DRUM WITH FLASHING BURNING LIGHT
- DRUM OR BARRICADE WITH STEADY BURN LIGHT
- SIGN (SEE DETAIL)
- TYPE I OR II CHECK BARRICADE WITH STEADY LIGHT BURN

REVISED - 10-15-04

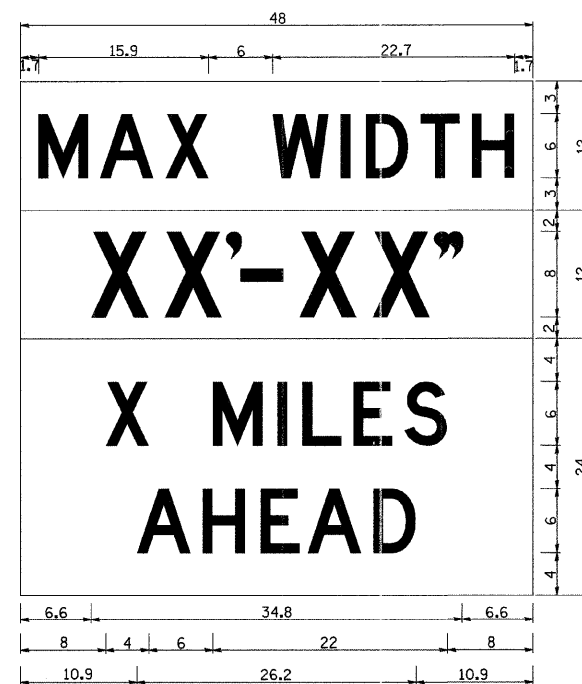
GENERAL NOTES

- CONES MAY BE SUBSTITUTED FOR BARRICADES OR DRUMS AT HALF THE SPACING DURING DAY OPERATIONS. CONES SHALL BE A MINIMUM OF 710 (28) IN HEIGHT.
- STEADY BURNING LIGHTS WILL NOT BE REQUIRED ON BARRICADES OR DRUMS FOR DAY OPERATIONS. ALL LIGHTS WILL BE MONODIRECTIONAL.
- REFLECTORIZED TEMPORARY PAVEMENT MARKING TAPE SHALL BE PLACED THROUGHOUT THE BARRICADED AREA OF EACH BAY WHERE THE CLOSURE TIME IS GREATER THAN FOURTEEN DAYS.
- THIS APPLICATION ALSO APPLIES WHEN WORK IS BEING PERFORMED IN THE RIGHT LANE(S) AND THE RIGHT TURN BAY IS TO REMAIN OPEN. UNDER THIS CONDITION, "RIGHT TURN LANE" R3-100 600 X 600 (24 X 24) AND M6-2R 530 X 380 (21 X 15) SHALL BE USED.
- THESE CONTROLS SHALL SUPPLEMENT MAINLINE TRAFFIC CONTROL FOR LANE CLOSURES. LONGITUDINAL DIMENSIONS MAY BE ADJUSTED TO FIT FIELD CONDITIONS.
- TRAFFIC CONTROL AND PROTECTION AT TURN BAYS (TO REMAIN OPEN TO TRAFFIC) SHALL BE INCLUDED IN THE COST SPECIFIED TRAFFIC CONTROL STANDARDS OR ITEMS.
- ALL DIMENSIONS ARE IN MILLIMETERS (INCHES) UNLESS OTHERWISE NOTED.

INFORMATIONAL WARNING SIGN (FOR NARROW TRAVEL LANES)



- NOTES**
 W12-2 - Horizontal Clearance Sign
 48.0" across sides, 1.9" Radius,
 0.8" Border, 0.5" Indent, Black on
 Orange; Standard Arrow Custom
 10.4" X 8.1" 180° Black 11 Inch
 D Series Lettering; Standard Arrow
 Custom 10.4" X 8.1" 0°



- W12-1103 (Width Is 8D);
No border, Black on White;
[MAX WIDTH] D;
- No border, Black on Orange;
[XX'-XX''] D;
- No border, Black on White;
[X MILES] D; [AHEAD] D;

All work to furnish and install these signs shall be included in the cost of the Traffic Control Standards and shall not be paid for separately.

ALL DIMENSIONS ARE IN INCHES UNLESS OTHERWISE NOTED.

REVISED - 1-9-08

INFORMATIONAL WARNING SIGNS (FOR NARROW TRAVEL LANES) 39.2

TRAFFIC CONTROL AND PROTECTION AT TURN BAYS (TO REMAIN OPEN TO TRAFFIC) 94.2

REVISED -	REGION 2 / DISTRICT 2 STANDARD	F.A.P. RTE.	SECTION	COUNTY	TOTAL SHEETS	SHEET NO.
REVISED -		525	(6BM)	WINNEBAGO	13	13
REVISED -		SCALE: 5/8" = 1'-0"	SHEET NO. OF SHEETS		CONTRACT NO. 64D74	
REVISED -		STA. TO STA.		FED. ROAD DIST. NO. ILLINOIS FED. AID PROJECT		

PLOT DATE = Sat Feb 09 07:52:20 2008