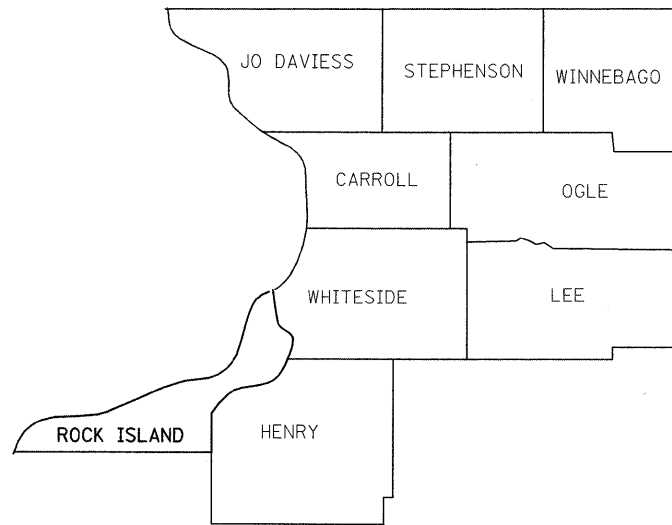


**INDEX OF SHEETS**

1. Cover Sheet
2. Summary of Quantities
3. General Notes & Standards
4. Location Maps
5. Traffic Control Plan
6. -11. Existing Bridge Plans Structure 081-0107
12. -19B. Existing Bridge Plans Structure 081-0108
20. -24. Existing Bridge Plans Structure 081-0131
25. -28. Existing Bridge Plans Structure 081-0122 & 0123
29. -32. Existing Bridge Plans Structure 081-0128 & 0129
33. -40. Existing Bridge Plans Structure 081-0134 & 0135

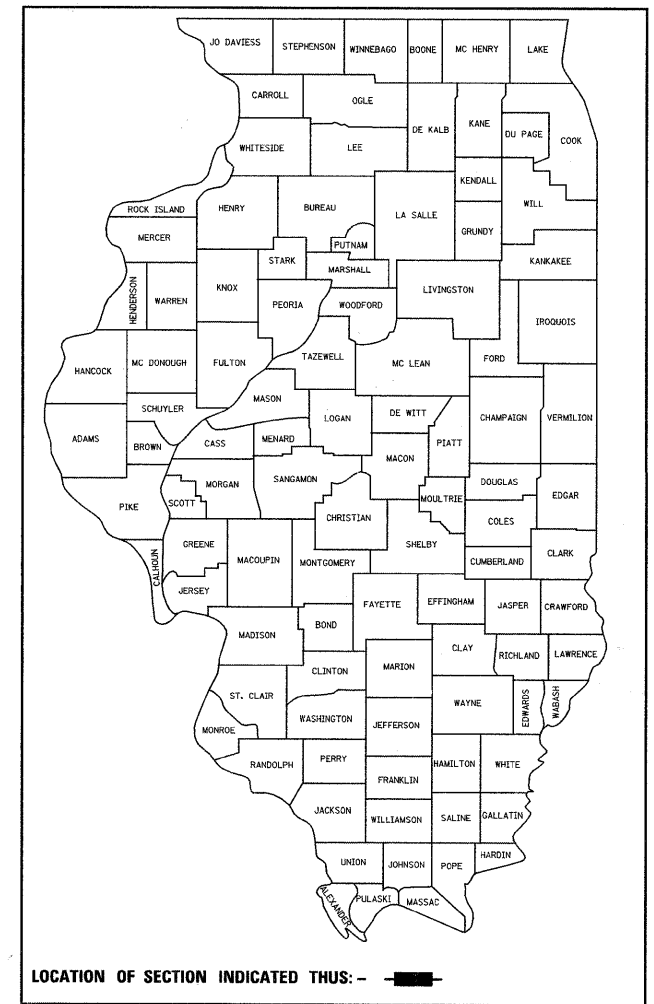
**STATE OF ILLINOIS**  
**DEPARTMENT OF TRANSPORTATION**  
**DIVISION OF HIGHWAYS**  
**PROPOSED**  
**HIGHWAY PLANS**

**FAI ROUTES 74 & 88 (I-74 & I-88)**  
**SECTION D2 BRIDGE PAINTING 2008-1**  
**ROCK ISLAND COUNTY**  
**C-92-027-08**

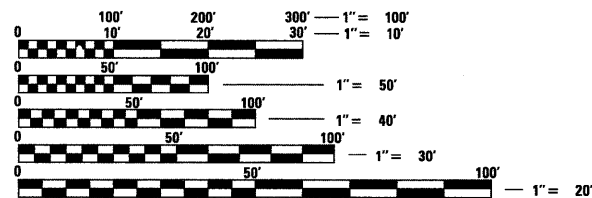


F.A. RTE.	SECTION	COUNTY	TOTAL SHEETS	SHEET NO.
*	**	ROCK ISLAND	42	1
FED. ROAD DIST. NO.	ILLINOIS	CONTRACT NO. 64D89		

D-92-025-08



LOCATION OF SECTION INDICATED THUS: - [black rectangle] -



FULL SIZE PLANS HAVE BEEN PREPARED USING STANDARD ENGINEERING SCALES. REDUCED SIZED PLANS WILL NOT CONFORM TO STANDARD SCALES. IN MAKING MEASUREMENTS ON REDUCED PLANS, THE ABOVE SCALES MAY BE USED.

J.U.L.I.E.  
 JOINT UTILITY LOCATION INFORMATION FOR EXCAVATION  
 1-800-892-0123  
 OR 811

DISTRICT 2 BRIDGE MAINTENANCE ENGINEER: MAHMOUD ETEMADI 815/284-5393  
 DISTRICT 2 BRIDGE PAINT TECHNICIAN: DAN LINK 815/284-5416

CONTRACT NO. 64D89

STATE OF ILLINOIS  
 DEPARTMENT OF TRANSPORTATION  
 DIVISION OF HIGHWAYS

SUBMITTED 1-25 2008  
George F. Ryan  
 DEPUTY DIRECTOR OF HIGHWAYS, REGION ENGINEER

March 21, 2008  
Eric E. Horvath  
 INTERIM ENGINEER OF DESIGN AND ENVIRONMENT

March 21, 2008  
Christine M. Reed  
 DIRECTOR OF HIGHWAYS, CHIEF ENGINEER

**PRINTED BY THE AUTHORITY  
 OF THE STATE OF ILLINOIS**