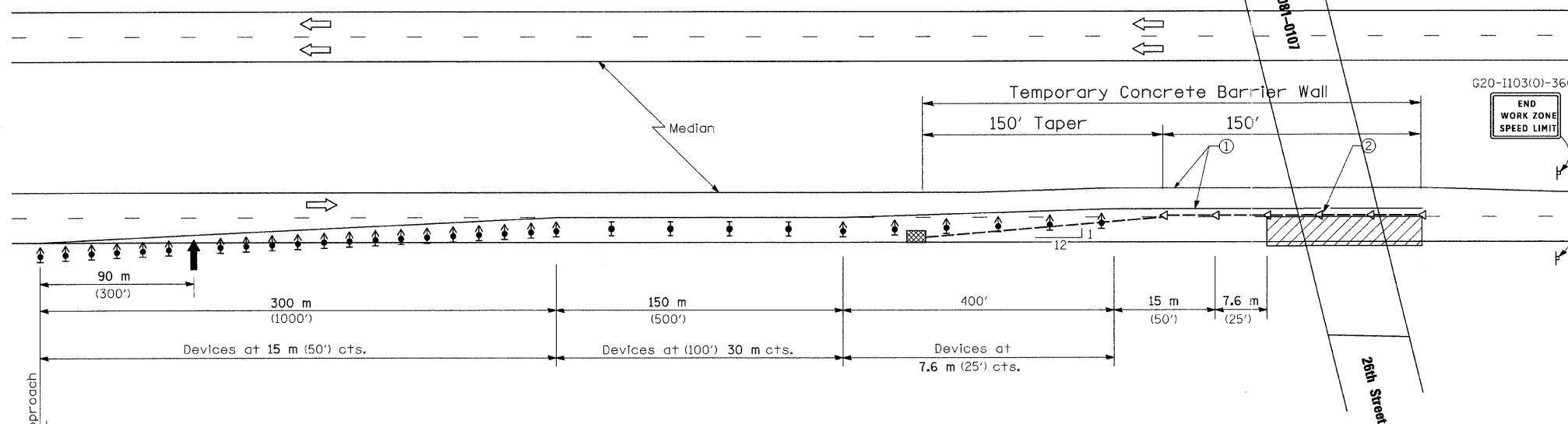


# Traffic Control Plan

Location 1 Shown. Use same layout for Locations 2 & 3.



See Standard 701400 for approach Start of lane closure taper

### Relocate Temporary Concrete Barrier

Location 1	26th Street/I-74	900 Feet
	Temporary Storage	1200 Feet
Location 2	27th Street/I-74	1200 Feet
	Temporary Storage	1200 Feet
Location 3	Port Byron Road/I-88	1200 Feet
<b>Total</b>		<b>5700 Feet</b>

### Temporary Concrete Barrier

Location 1	26th Street/I-74	300 Feet
<b>Total</b>		<b>300 Feet</b>

### Traffic Control & Protection 701411

		Each
Location 1	26th Street/I-74 (SB)	2
Location 2	27th Street/I-74 (SB)	2
Location 3	Port Byron/I-88 (EB)	2
<b>Total</b>		<b>6 Each</b>

### Impact Attenuators, Temporary

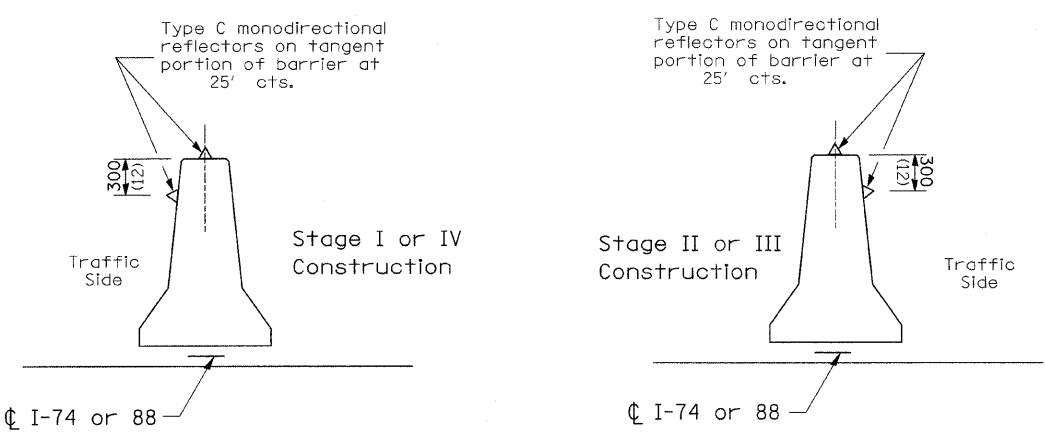
Location 1	26th Street/I-74	1 Each
		1 Each

### Impact Attenuators, Relocate

Location 1	26th Street/I-74	3 Each
Location 2	27th Street/I-74	4 Each
Location 3	Port Byron Road/I-88	4 Each
<b>Total</b>		<b>11 Each</b>

### Pavement Marking Tape Type III

Location 1	26th Street/I-74	7500 Feet
Location 2	27th Street/I-74	7500 Feet
Location 3	Port Byron Road/I-88	7500 Feet
<b>Total</b>		<b>22500 Feet</b>



**DETAIL A**  
(BARRIER WALL REFLECTORS)

### SYMBOLS

- ↑ Arrow board
- ▨ Work area
- ⊥ Sign
- ↑ Direction indicator barricade with steady burn monodirectional light
- ⊥ Type II barricade, drum, or vertical barricade with steady burn monodirectional light
- Temporary concrete barrier
- ◁ Type C Monodirectional reflector
- Vertical panel with steady burn monodirectional light.
- ▨ Impact attenuator

- ① ReflectORIZED temporary pavement marking tape shall be placed throughout the taper and along-side the work area. The edge line shall be white for right lane closure and yellow for left lane closures.
- ② Vertical panels at 7.6 m (25') centers with steady burning monodirectional lights.

All dimensions are in millimeters (inches) unless otherwise shown.

Traffic Control Plan  
26th Street over I-74  
Various Routes Section D2 Bridge Painting 2008-1  
Rock Island County  
Structure No. 081-0107

\* FAI ROUTES 74 & 88  
\*\* D2 BRIDGE PAINTING 2008-1

FILE NAME = P:\PAINTING\64089\paint2008-1.dgn	USER NAME = linkdj	DESIGNED -	REVISED -	<b>STATE OF ILLINOIS DEPARTMENT OF TRANSPORTATION</b>	<b>TRAFFIC CONTROL PLAN</b>			F.A. RTE.	SECTION	COUNTY	TOTAL SHEETS	SHEET NO.	
PLOT SCALE = 50.0000' / IN.	CHECKED -	REVISED -	REVISED -		SCALE: _____	SHEET NO. _____	OF _____	SHEETS	STA. _____	TO STA. _____	ROCK ISLAND	40	5
PLOT DATE = Thu Feb 28 07:42:27 2008	DATE -	REVISED -	REVISED -		CONTRACT NO. 64D89								
FED. ROAD DIST. NO. - ILLINOIS FED. AID PROJECT													