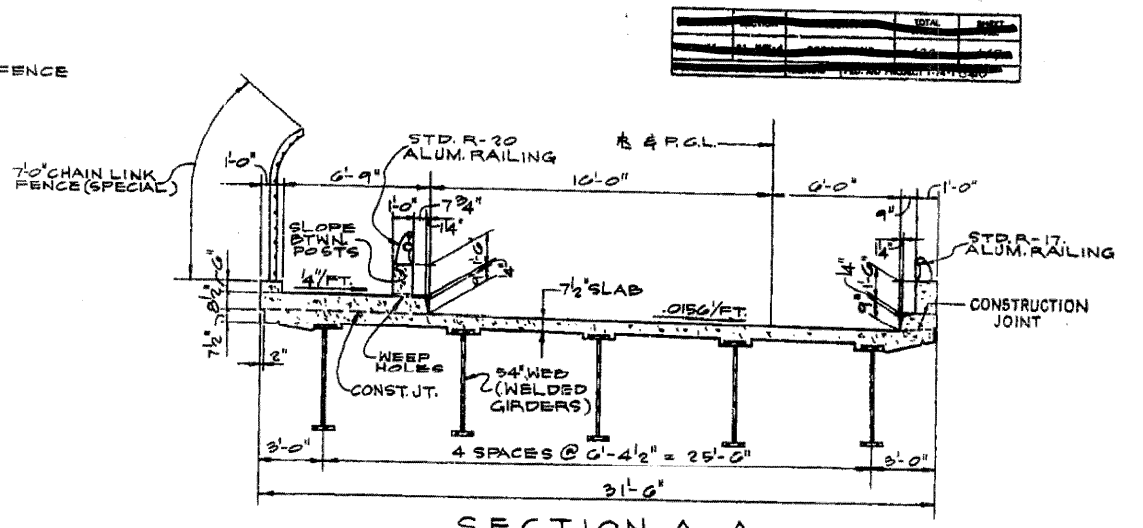
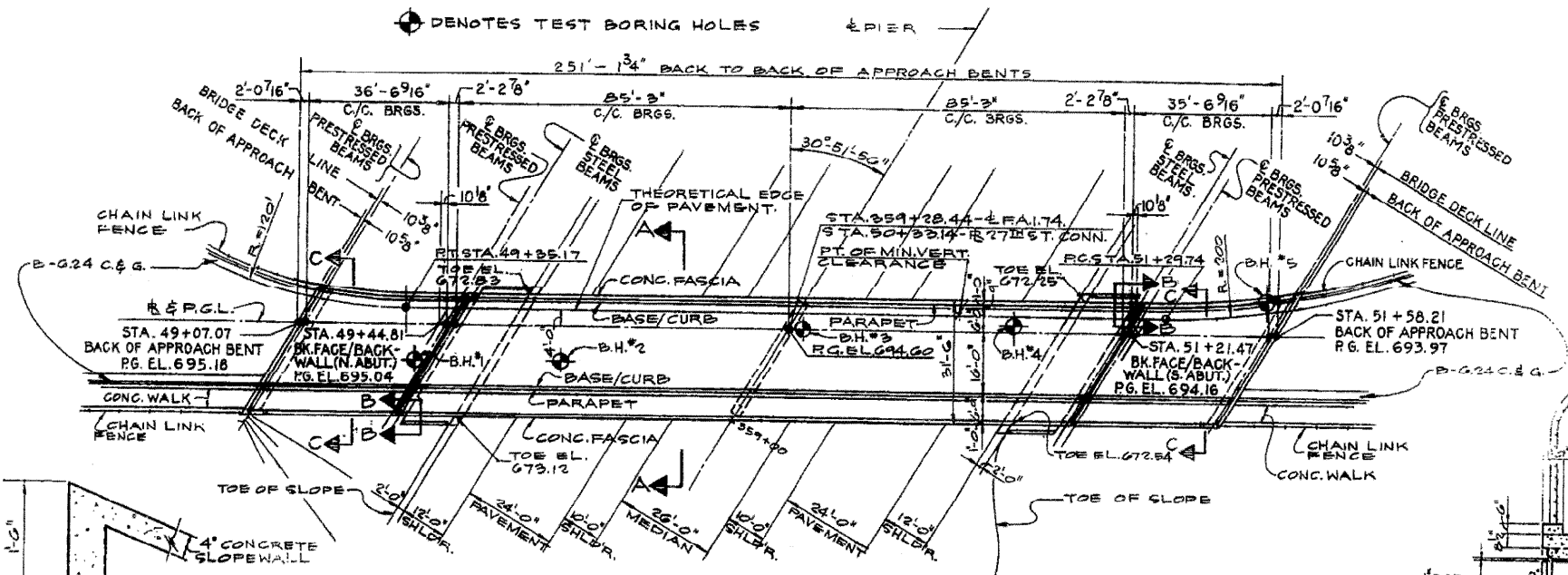


**BENCH MARKS**  
 A-12: BRASS CAP IN CONC. MON.  
 STA. 360+40 E.F.A.I. 74-200' RT.  
 ELEV. 693.10  
 A-14: BRASS CAP IN CONC. MON.  
 STA. 370+50 E.F.A.I. 74-310' LT.  
 ELEV. 695.08

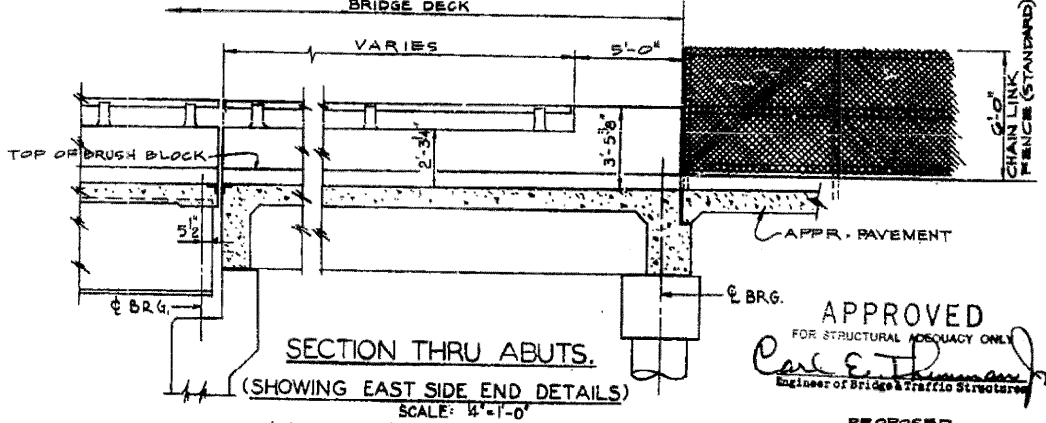
**WEST ELEVATION**  
 SCALE: 1" = 20'-0"



**SECTION A-A**  
 SCALE: 1/4" = 1'-0"



**PLAN**  
 SCALE: 1" = 20'-0"

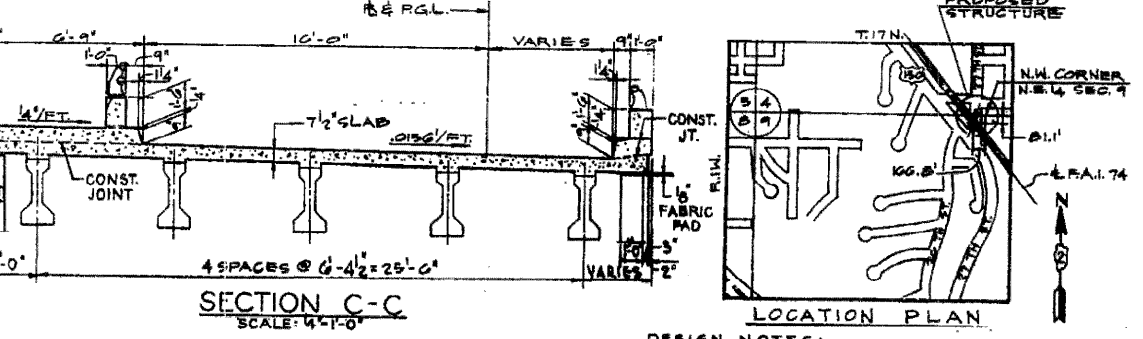


**SECTION THRU ABUTS.**  
 (SHOWING EAST SIDE END DETAILS)  
 SCALE: 1/4" = 1'-0"

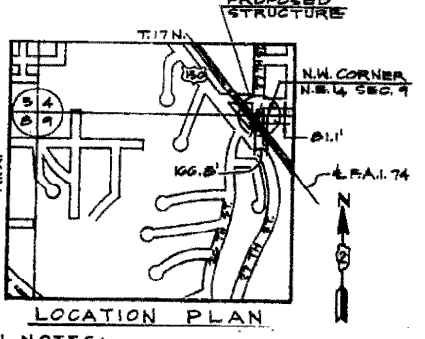
**APPROVED**  
 FOR STRUCTURAL ADEQUACY ONLY  
*Carl E. Johnson*  
 Engineer of Bridge & Traffic Structures

**DETAIL X**  
 SCALE: 1" = 1'-0"

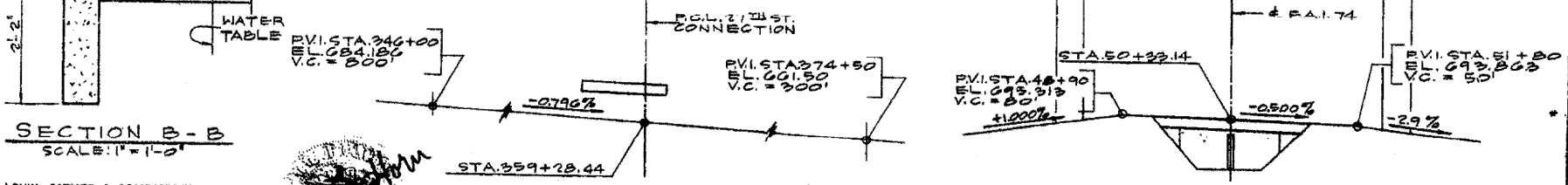
**SECTION B-B**  
 SCALE: 1" = 1'-0"



**SECTION C-C**  
 SCALE: 1/4" = 1'-0"



**LOCATION PLAN**



**PROFILE GRADE - 27th ST. CONNECTION**

\* CALCULATED QUANT. - 173,005 lbs. TOTAL BILL OF MATERIAL (BRIDGE ONLY)

ITEM	UNIT	SUPER STRUCTURE	SUB-STRUCTURE	TOTAL
CLASS A EXCAVATION FOR STRUCTURES	CU. YD.		325	325
FURNISHING AND ERECTING PRECAST, PRESTRESSED CONCRETE I BEAMS, 36"	LIN. FT.	369		369
CLASS X CONCRETE	CU. YD.	311.9	261.1	573.0
PROTECTIVE COAT	SQ. YD.	941		941
FURNISHING AND ERECTING STRUCTURAL STEEL	L. SUM	0.1		0.1
REINFORCEMENT BARS	POUND	72,370	10,580	181,990
SUB-PIER SHAFTS	CU. FT.		2,615.0	2,615.0
NAME PLATES	EACH	2		2
SLOPE WALL (4-INCH)	SQ. YD.	150		150
ALUMINUM RAILING	LIN. FT.	290		290
CHAIN LINK FENCE (SPECIAL)	LIN. FT.	249		249
PERMANENT BENCH MARKS, TYPE I	EACH			200
BRIDGE SEAT SEALANT	LUMP SUM		0.3	0.3
ALUMINUM RAILING, TYPE L	LIN. FT.	290		290

**DESIGN NOTES:**  
 LOADING-HS 20-44 & ALT. + 25' FT<sup>2</sup> FUTURE W.S.  
 f<sub>c</sub> = 1400 P.S.I. CAST IN PLACE CONCRETE, EXCEPT SLAB.  
 f<sub>c</sub> = 1200 P.S.I. CAST IN PLACE CONCRETE, SLAB ONLY.  
 f<sub>c</sub> = 5000 P.S.I. PRECAST PRESTRESSED UNITS.  
 f<sub>c</sub> = 4000 P.S.I.  
 f<sub>s</sub> = 248,000 P.S.I. (STRANDS 7/16")  
 f<sub>s</sub> = 173,000 P.S.I.  
 f<sub>s</sub> = 20,000 P.S.I. REINFORCING & STRUCT. STEEL.  
 V = 75 P.S.I. ALLOWABLE SHEAR IN FOOTING.  
 n = 10 FOR CAST-IN PLACE CONCRETE.  
 ALLOWABLE LL DEFLECTION -  
 1/200 (NON-COMPOSITE) 1/300 (COMPOSITE)

**GENERAL PLAN & ELEVATION**  
 F.A.I. 74-SECTION 81-MB-4  
 F.A.I. 74 UNDER 27th STREET CONNECTION  
 ROCK ISLAND COUNTY

\* FAI ROUTES 74 & 88  
 \*\* D2 BRIDGE PAINTING 2008-1

DE LEUW, CATHER & COMPANY ENGINEERS  
 DESIGNED BY: E.S. MARTINS  
 DRAWN BY: G.P. ALLEMAN  
 CHECKED: E.S. MARTINS  
 IN CHARGE: E.S. MARTINS  
 APPROVED: W.G. HORN

**FOR INFORMATION ONLY**  
 LOCATION 1 Structure Number 081-0107

STATE OF ILLINOIS  
 DEPARTMENT OF TRANSPORTATION

EXISTING BRIDGE PLANS

SCALE: SHEET NO. OF SHEETS STA. TO STA.

F.A. RTE.	SECTION	COUNTY	TOTAL SHEETS	SHEET NO.
.	..	ROCK ISLAND	40	10

CONTRACT NO. 64D89  
 FED. ROAD DIST. NO. [ILLINOIS] FED. AID PROJECT

FILE NAME =	USER NAME =	DESIGNED -	REVISED -
P:\PAINTING\64D89\point2008-1.dgn	linkdj	DESIGNED -	REVISED -
		DRAWN -	REVISED -
		CHECKED -	REVISED -
		DATE -	REVISED -

PLOT SCALE = 50,000' / IN.  
 PLOT DATE = Tue Jan 29 14:36:01 2008