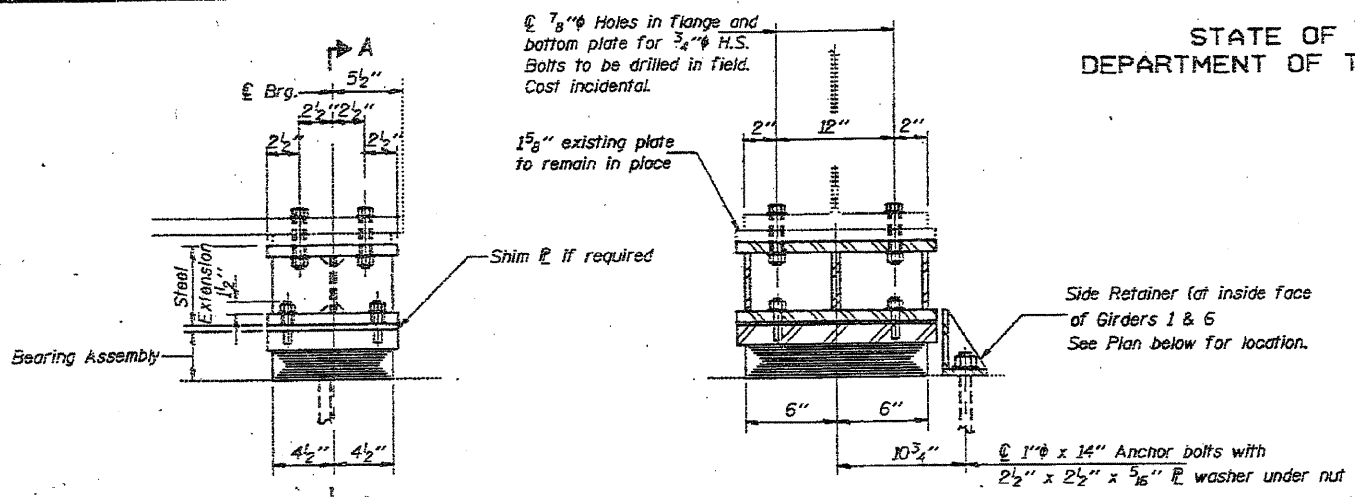


STATE OF ILLINOIS
DEPARTMENT OF TRANSPORTATION

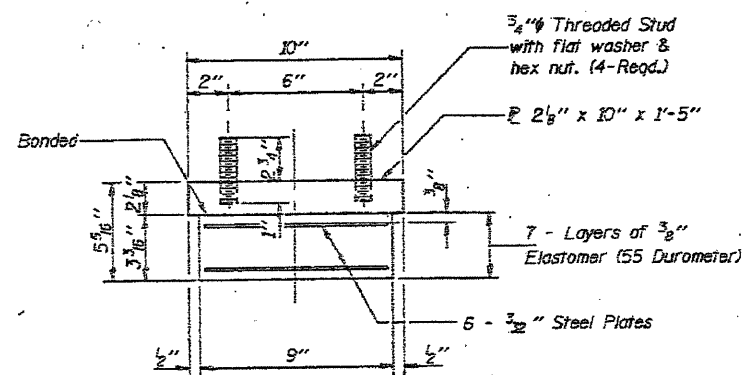
PROJECT NO.	SECTION	COUNTY	SHEET	TOTAL
F.A.I. 74 8 83	BRIDGE 2009-1	ROCK ISLAND	42	198
FEDERAL CONTRACT NO. 7		DATE OF PROJECT		



ELEVATION AT SOUTH ABUTMENT

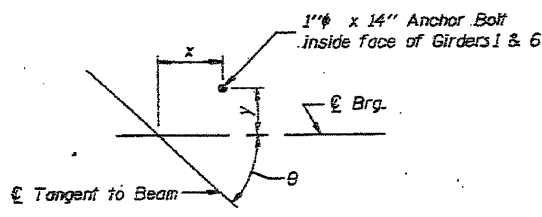
SECTION A-A

TYPE I ELASTOMERIC EXP. BRG.



BEARING ASSEMBLY

Note: Shim plates shall not be placed under Bearing Assembly.



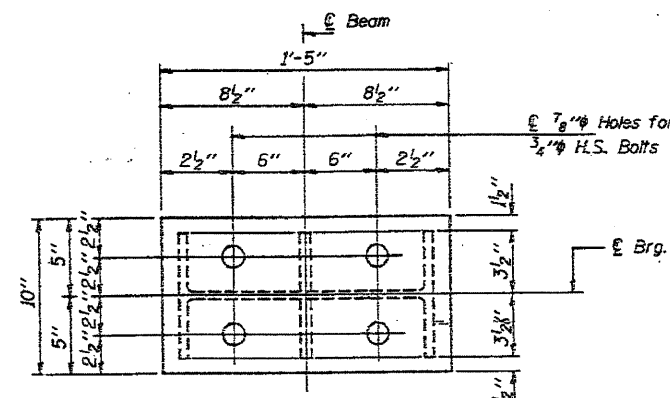
PLAN

For anchor bolt installation details see sheet 26 of 27.
For dimensions and angles see table below.

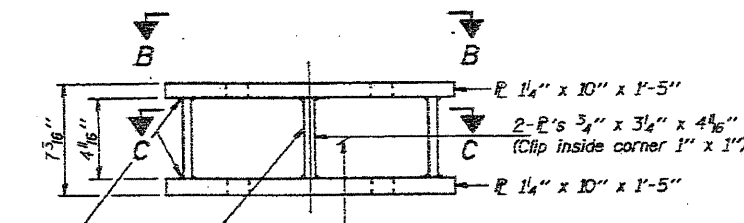
Girders	1	6
θ	47°-11'-24"	44°-36'-55"
x	7 1/8"	7 1/2"
y	7 1/4"	7 3/8"

JACK AND REMOVE EXISTING BEARING PROCEDURE

- 1.) The Contractor shall submit for approval by the Engineer, plans for jacking prior to commencing any work at the bearings. Dead Load = 25.0 K at each beam without concrete deck.
- 2.) During each stage of construction, jacking and removing existing bearings shall be done after deck removal is completed and before the new deck is poured.
- 3.) Three beams may be lifted at one time.
- 4.) Jacking shall be limited to a maximum of 1/8 inch lift.
- 5.) The existing anchor bolts shall be removed by cutting off flush with the bridge seat. The rockers and bottom plates may be removed by cutting the pintles, leaving the existing top plate intact. The bottom flange area of the beam and existing top plate shall be cleaned and painted as required and as specified for structural steel prior to placing the new bearings.
- 6.) The new bearings and steel extensions shall be placed and the jacks shall be lowered before the new deck is poured.

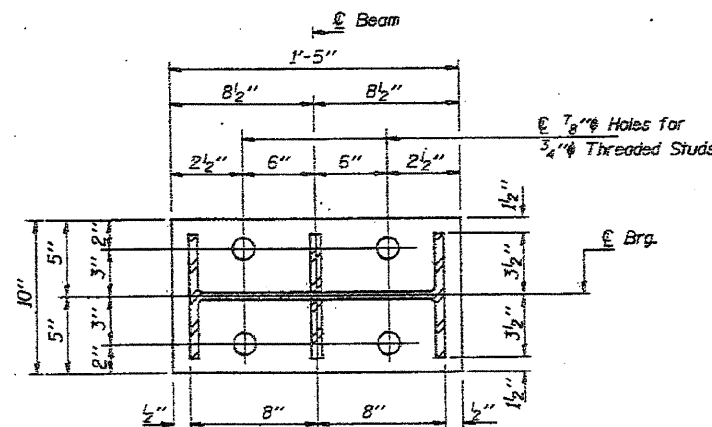


VIEW B-B



STEEL EXTENSION

Equivalent welded plates will be allowed in lieu of the W15x40 section.



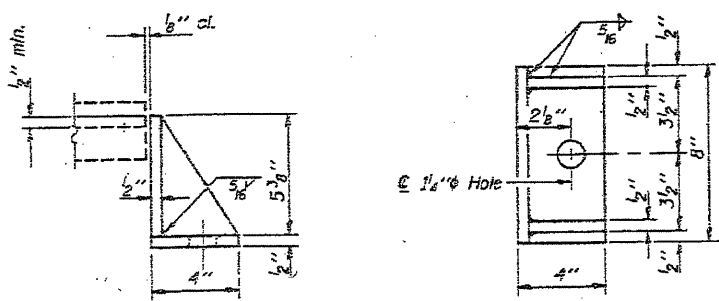
SECTION C-C

BILL OF MATERIAL

Item	Unit	Total
Elastomeric Bearing Assembly, Type I	Each	6
Jack and Remove Existing Bearings	Each	6

FOR INFORMATION ONLY

LOCATION 2 SN.081-0108 SOUTH ABUTMENT BEARING DETAILS
F.A.I. RT. 74 SEC. 81-1HB-5
ROCK ISLAND COUNTY
STA. 365+51.01



SIDE RETAINER

Equivalent rolled angle with stiffeners will be allowed in lieu of welded plates.

DESIGNED	Michael Abtoun
CHECKED	Sweet's
DRAWN	Paul Summer
CHECKED	M.S.

EXAMINED	DEC 27 1990
APPROVED	Robert E. Anderson
DIRECTOR OF HIGHWAYS	

I-2-E1 12-1-83