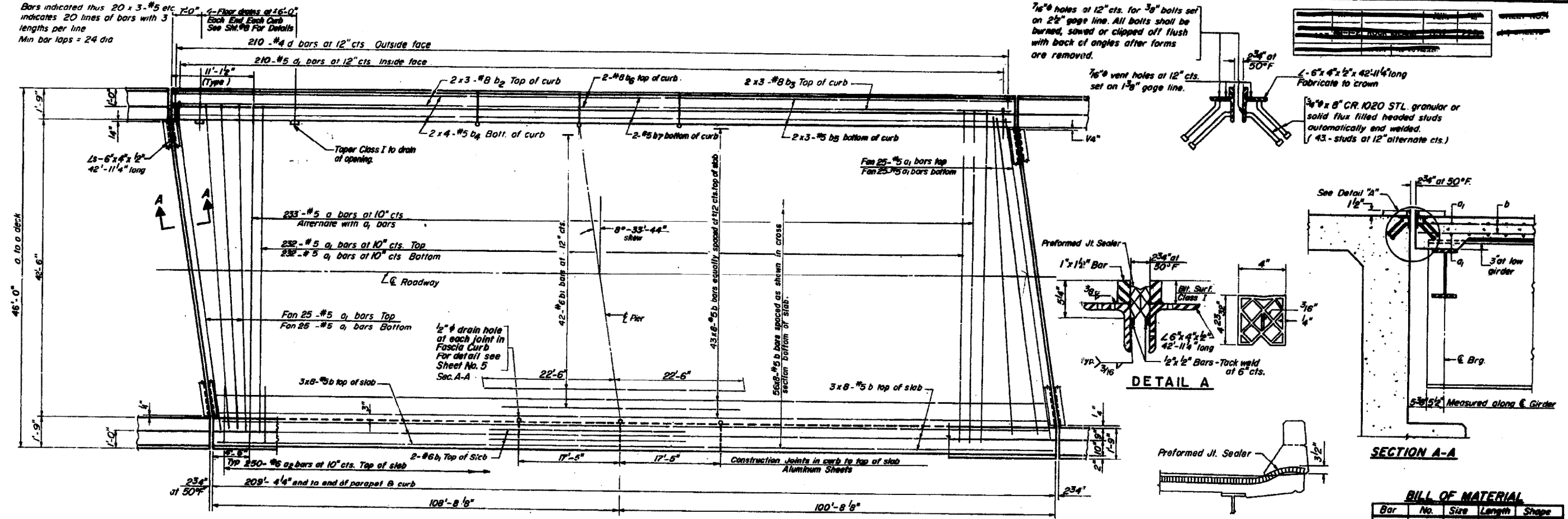
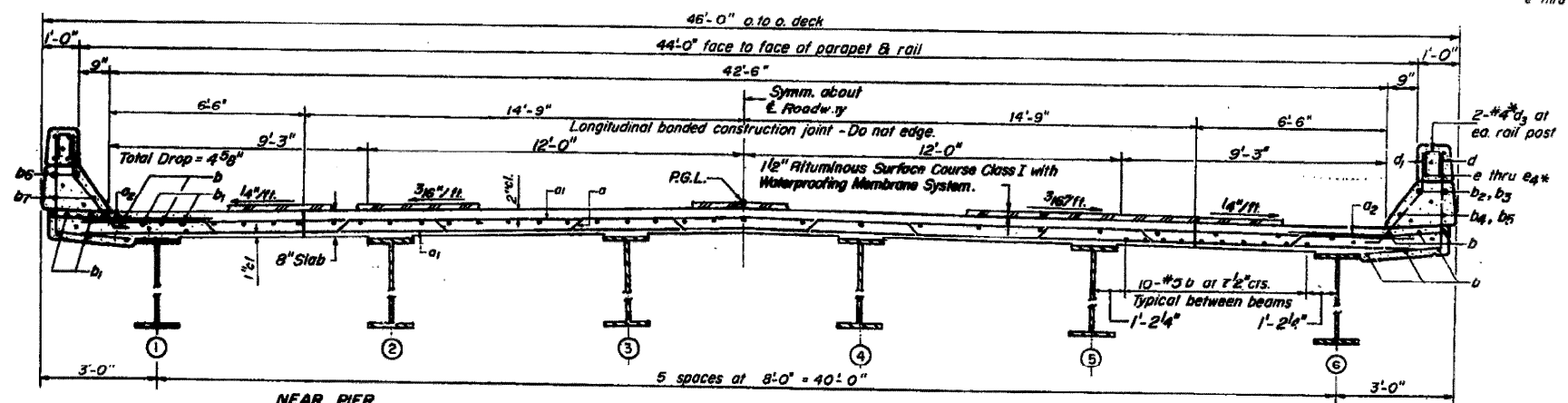


NOTE:

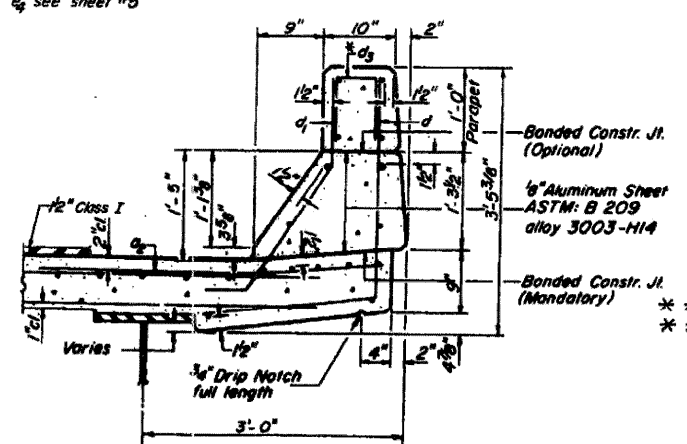
Bars indicated thus 20 x 3-#5 etc. indicates 20 lines of bars with 3 lengths per line
Min bar laps = 24 dia



PLAN



CROSS SECTION LOOKING WEST



CURB SECTION

BILL OF MATERIAL

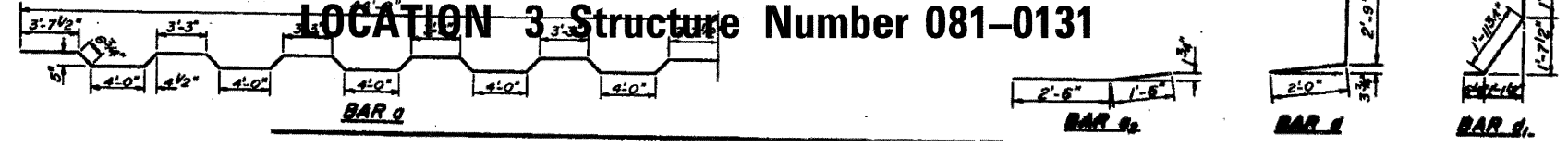
Bar	No.	Size	Length	Shape
a	233	#5	46'-10 1/2"	~
a ₁	564	#5	44'-0"	~
a ₂	500	#6	4'-0"	~
b	840	#5	27'-3"	~
b ₁	46	#6	46'-0"	~
b ₂	12	#8	37'-8"	~
b ₃	12	#8	29'-1"	~
b ₄	16	#5	23'-8"	~
b ₅	12	#5	28'-7"	~
b ₆	8	#8	17'-2"	~
b ₇	8	#5	17'-2"	~
d	420	#4	4'-9"	~
e	420	#5	3'-7"	~
				Reinforcement Bars
				Lbs 73,340
				Class X Concrete
				Cu. Yds 280.2
				Structural Steel
				Lbs. 322,400
				Protective Coat
				Sq. Yds. 152
				Bituminous Concrete Surface Course Class I
				Tons 45
				Waterproofing Membrane System
				Sq. Yds. 989
				Preformed Joint Sealer
				Lin. Ft. 90.0

** Parapet Reinforcement and Class X Concrete are billed on sheet #5

DESIGNED	P.B.
CHECKED	B.T.M.
DRAWN	A.M.
CHECKED	B.T.M.

FOR INFORMATION ONLY

LOCATION 3 Structure Number 081-0131



DECK DETAILS
FA 403 SECTION 161-IHB-7
FA 403 UNDER C. H. 2
ROCK ISLAND COUNTY
STATION 792+93.31
* FAI ROUTES 74 & 88
** D2 BRIDGE PAINTING 2008-1