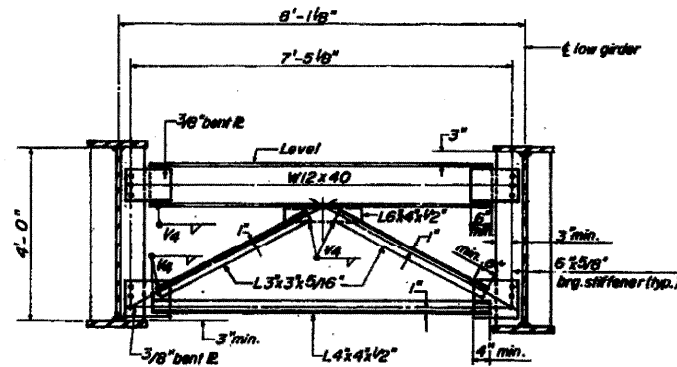
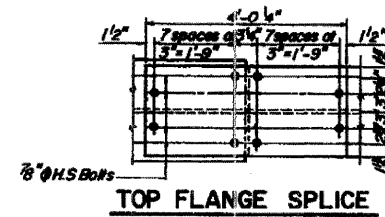


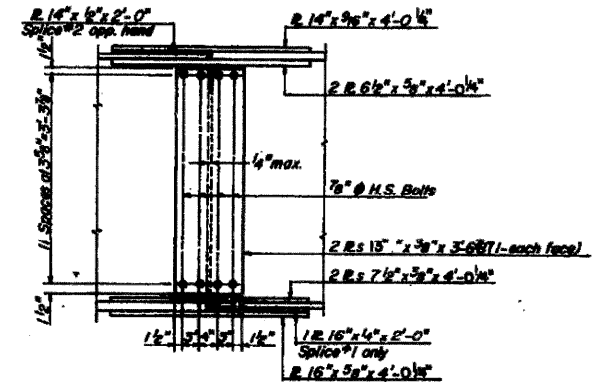
**TYPICAL INTERIOR DIAPHRAGM-DI**  
No. Req'd: 45



**TYPICAL END CROSS FRAME - CF 1**  
No. Req'd: 10



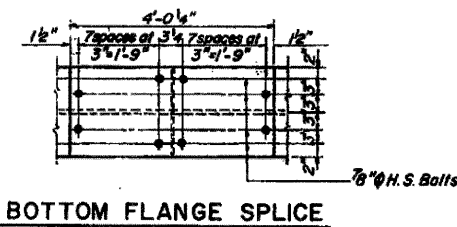
**TOP FLANGE SPLICE**



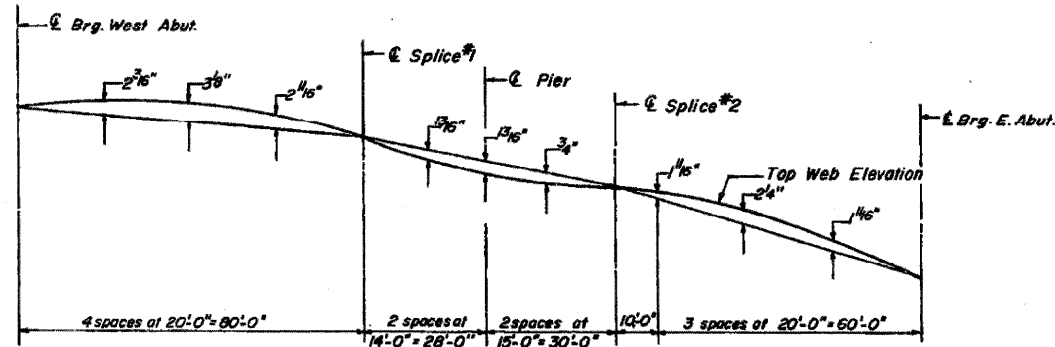
**DETAIL OF SPLICE**  
(SPLICE #1 SHOWN, SPLICE #2 SIMILAR EXCEPT AS NOTED.)

# FOR INFORMATION ONLY

## LOCATION 3 Structure Number 081-0131

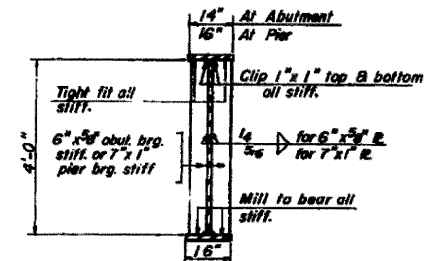


**BOTTOM FLANGE SPLICE**



**CAMBER DIAGRAM**  
Camber for Dead Loads and Curvature of Roadway.

Note: Hardened washers shall be required over 1/8" & holes.

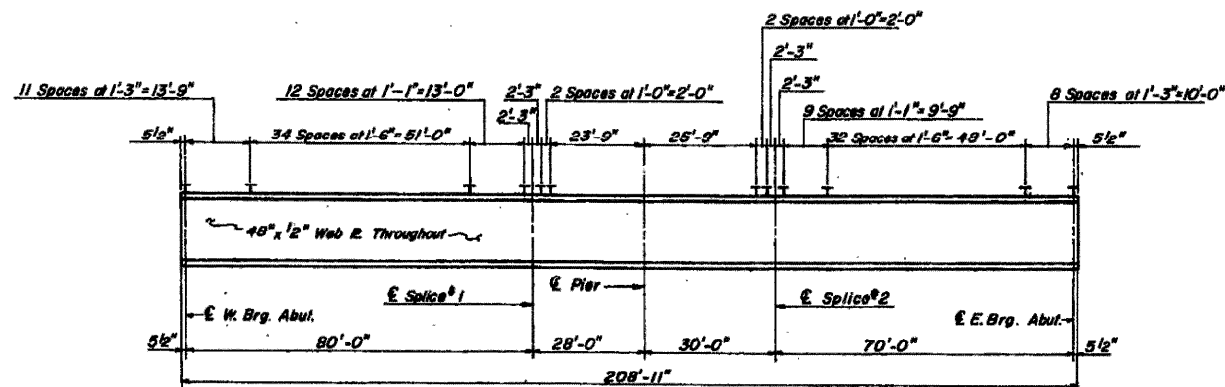


**TYPICAL SECTION**  
BRG. STIFFENER

Work this Sheet with Sheet No. 6

* TOP OF WEB ELEVATIONS				
LOCATION	℄ BRG. W. ABUT.	℄ Splice #1	℄ Splice #2	℄ BRG. E. ABUT.
Girder #1	626.594	627.752	626.679	624.976
Girder #2	626.767	627.935	626.873	625.178
Girder #3	626.699	626.078	627.023	625.337
Girder #4	626.906	626.095	627.048	625.371
Girder #5	626.788	627.988	626.948	625.281
Girder #6	626.627	627.639	626.604	625.140

\* For Fabrication only



**SHEAR CONNECTORS SPACING**

DESIGNED	B.T.M.
CHECKED	P.B.
DRAWN	A.S.
CHECKED	D.M.P.

**STRUCTURAL STEEL**  
FA 403 SECTION 161-IHB 7  
FA 403 UNDER CH 2  
ROCK ISLAND COUNTY  
STATION 792+93.31

\* FAI ROUTES 74 & 88  
\*\* D2 BRIDGE PAINTING 2008-1

FILE NAME = P:\PAINTING\64089\paint2008-1.dgn	USER NAME = linkdj	DESIGNED -	REVISD -	<b>STATE OF ILLINOIS DEPARTMENT OF TRANSPORTATION</b>	<b>EXISTING BRIDGE PLANS</b>				F.A. RTE.	SECTION	COUNTY	TOTAL SHEETS	SHEET NO.	
PLOT SCALE = 50,0000' / IN.	PLOT DATE = Tue Jan 29 14:36:21 2008	DRAWN -	REVISD -		SCALE:	SHEET NO.	OF	SHEETS	STA.	TO	STA.	ROCK ISLAND	40	23
		CHECKED -	REVISD -									CONTRACT NO. 64D89		
		DATE -	REVISD -									ILLINOIS	FED. AID PROJECT	