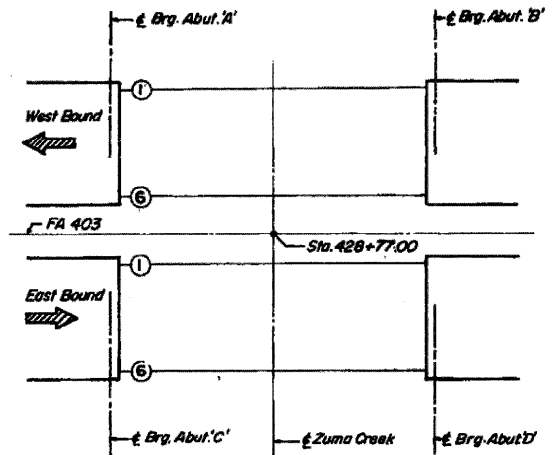
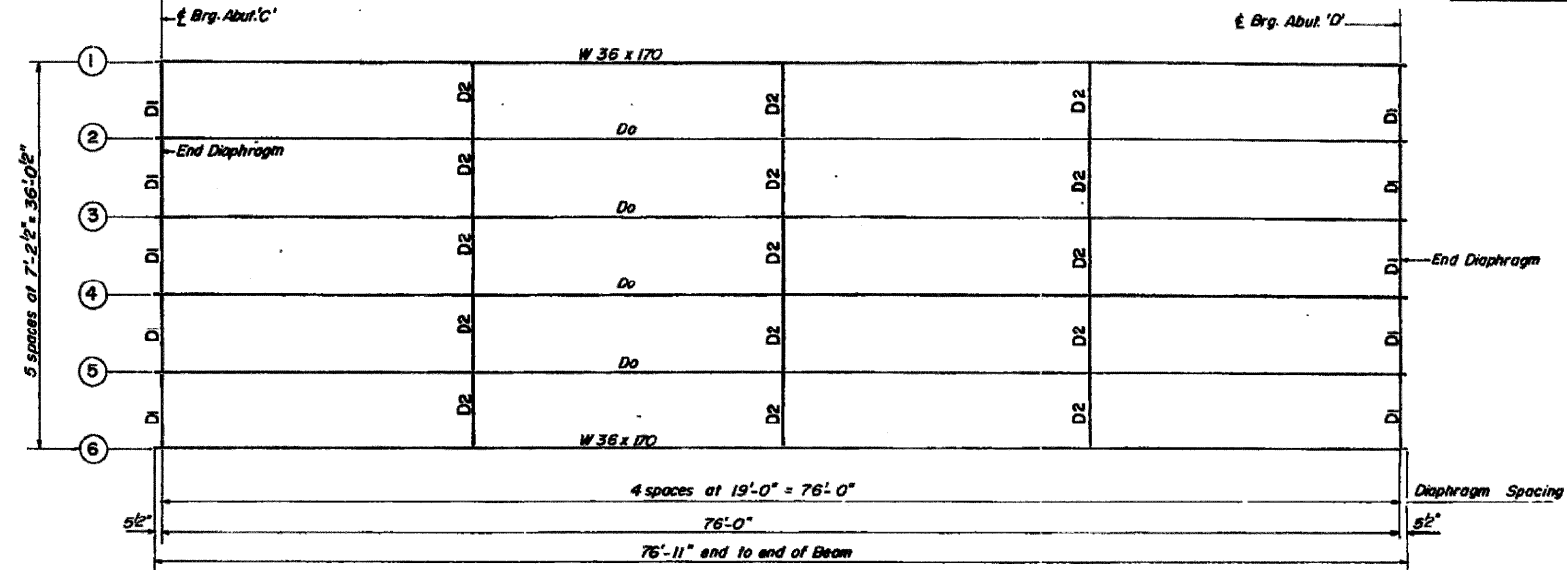


FOR INFORMATION ONLY LOCATION 4 Structure Numbers 081-0122

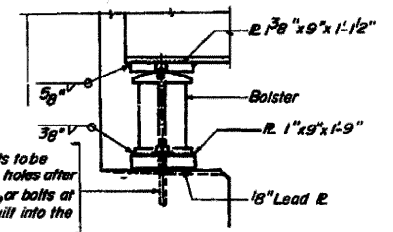
081-0122	081-0122	081-0122	081-0122
----------	----------	----------	----------



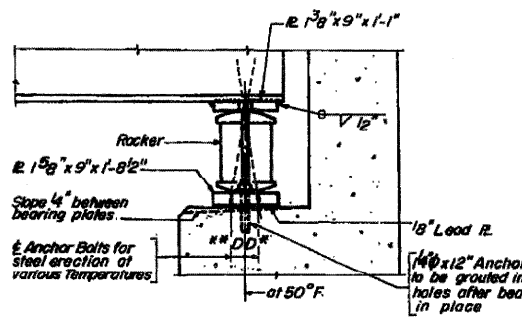
KEY PLAN



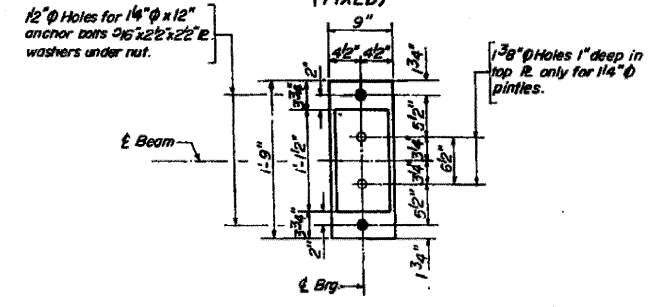
FRAMING PLAN
East Bound Shown
West Bound Similar



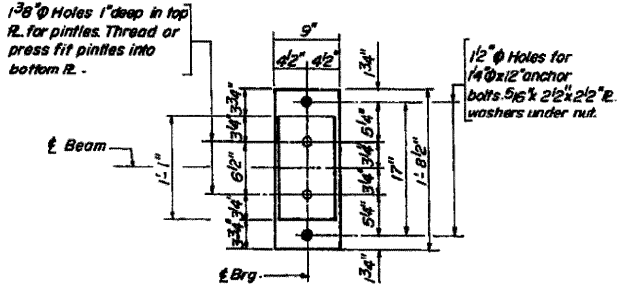
ABUT. A & C (FIXED)



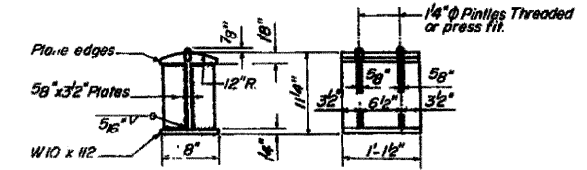
ABUT. B & D BEARING (EXPANSION)



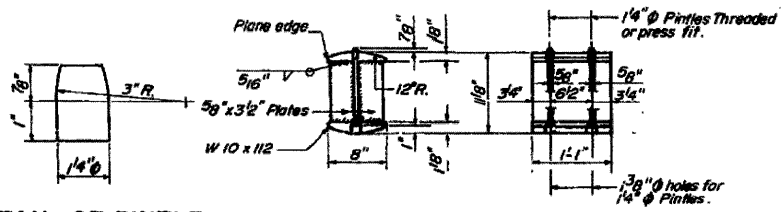
PLAN



PLAN



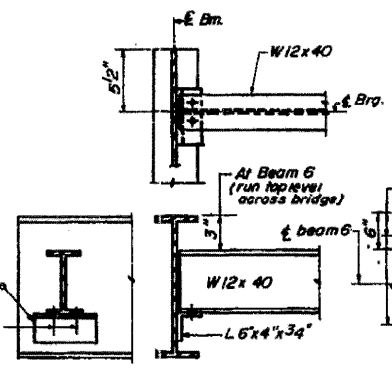
DETAIL OF BOLSTER ABUT. A & C



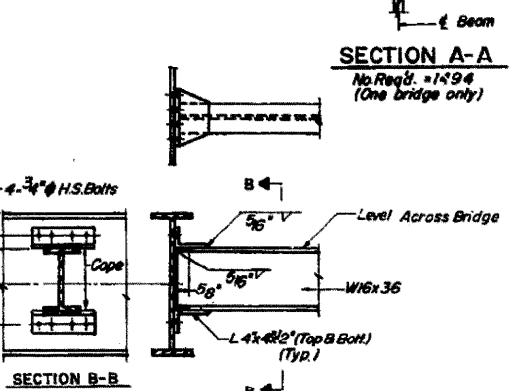
DETAIL OF PINTLE

DETAIL OF ROCKER ABUT. B & D

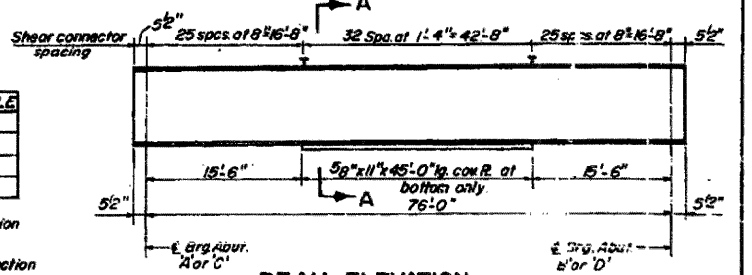
*D-18"/100 ft. of exp. for every 15° below the normal temp. of 50°
 *D-18"/100 ft. of exp. for every 15° above the normal temp. of 50°
 Note: Hardened washer shall be required over 5/8" holes in angles.



END DIAPHRAGM D1
20 D1 Required



INTERIOR DIAPHRAGM D2
30 D2 Required



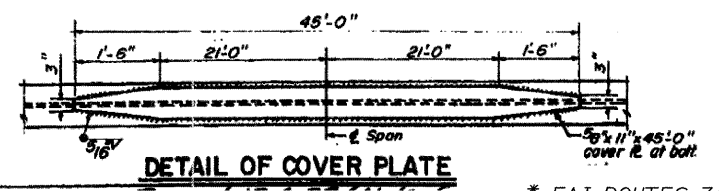
BEAM ELEVATION

(Composite in Positive Moment areas only)

INTERIOR GIRDER MOMENT TABLE	
0.5 Span	
Is (in ⁴)	12559
Ic (in ⁴)	31400
Ss (in ³)	763
Sc (in ³)	1053
Ic (in ⁴)	.97
M _D (in)	690.5
Fs _D (ksi)	10.86
S _D (in ³)	.462
M _s (in)	337
M _s + M _D (in)	891.1
Total (in)	1228
Fs _t (ksi)	13.99
Fs _b (ksi)	24.85
VR (in)	51.7

INTERIOR GIRDER REACTION TABLE	
Abutment	
R ₀ (k)	53.8
R ₁ (k)	57.7
R ₂ (k)	111.5

Is and Ss are the moment of inertia and section modulus of the steel section.
 Ic and Sc are the moment of inertia and section modulus of the composite section used in computing fs.
 VR is the maximum impact shear range in span.



DETAIL OF COVER PLATE

SUPERSTRUCTURE STEEL
 FA 403 SECTION 161-1B-1
 FA 403 OVER ZUMA CREEK
 ROCK ISLAND COUNTY
 STATION 428+77.00

DESIGNED	P.B.
CHECKED	H.R.S.
DRAWN	A.M.
CHECKED	H.R.S.

* FAI ROUTES 74 & 88
 ** D2 BRIDGE PAINTING 2008-1