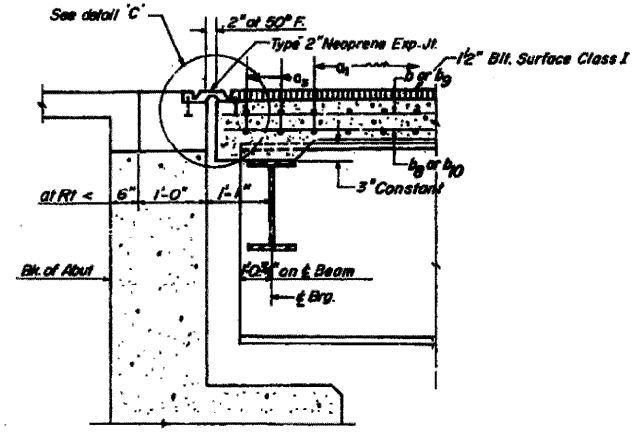
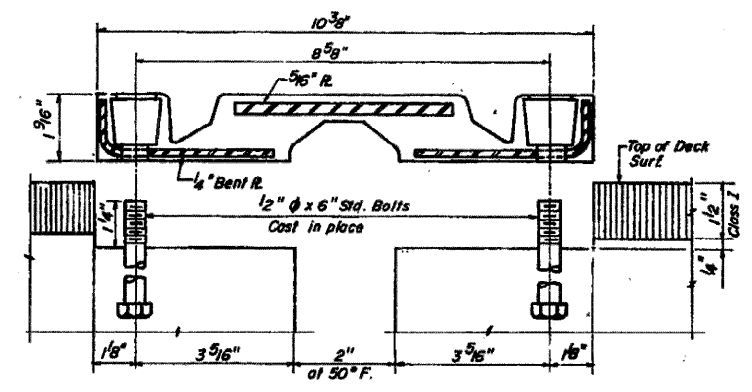


NO.	DATE	BY	CHKD.



SECTION A-A



DETAIL 'C'
NEOPRENE EXPANSION JOINT
(Abut. A & C only)

FOR INFORMATION ONLY

LOCATION 4 Structure Numbers 081-0135 & 0134

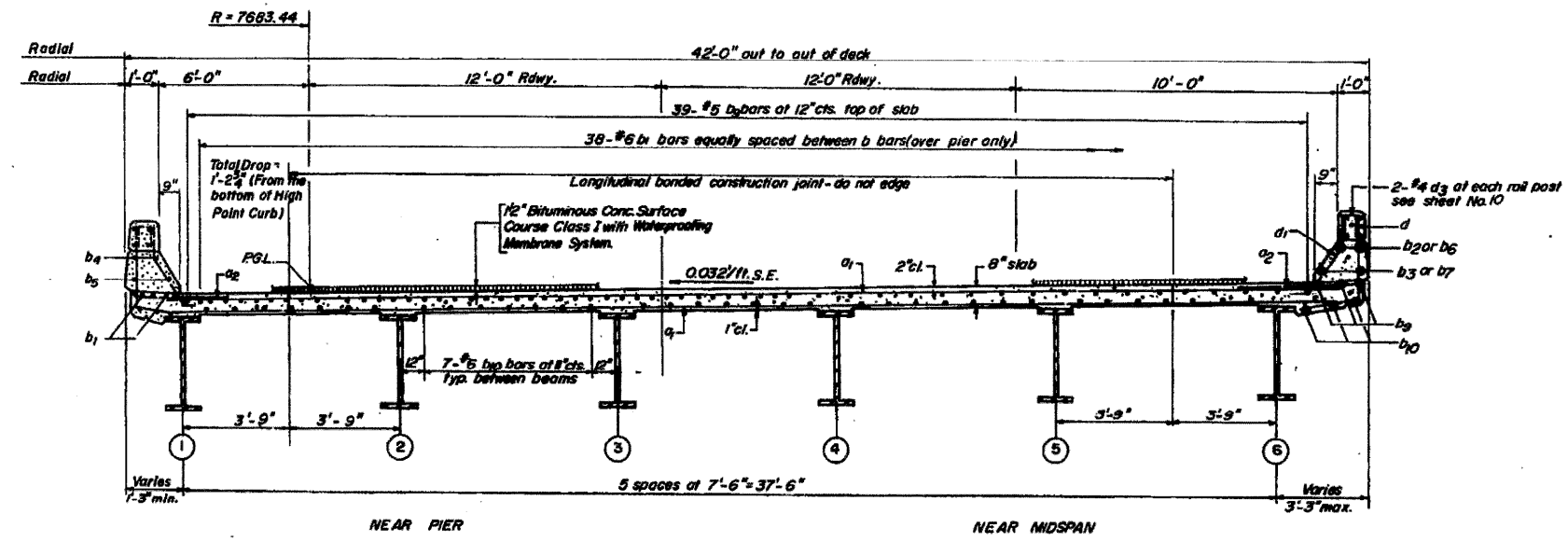
BILL OF MATERIAL

BAR NO.	NO.	SIZE	LENGTH	SHAPE
a1	732	#6	40'-0"	—
a2	364	#6	4'-0"	—
a3	16	#6	34'-3"	—
b1	84	#6	26'-9"	—
b2	16	#8	30'-0"	—
b3	16	#5	29'-8"	—
b4	16	#8	10'-6"	—
b5	16	#5	10'-6"	—
b6	12	#2	25'-8"	—
b7	12	#5	25'-2"	—
b8	315	#5	33'-9"	—
b9	287	#6	33'-9"	—
d	454	#4	4'-7"	┘
d1	448	#5	3'-8"	┘

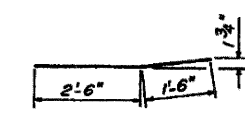
* Reinforcement Bars Lbs. 82,630
 * Class X Concrete Cu Yds. 245.7
 ** Structural Steel Lbs. 311,960
 Protective Coat Sq Yds. 220
 Bituminous Concrete Surface Course Class I Tons 62
 Waterproof Membrane System Sq Yds. 973
 Neoprene Exp. Jt. 2 1/2" Lin. Ft. 66
 Neoprene Exp. Jt. 2" Lin. Ft. 63

* Parapet Reinforcement and Class X Concrete are billed on sheet No. 10
 **Weights of bearing assemblies with lead plates and anchor bolts are included as Structural Steel.

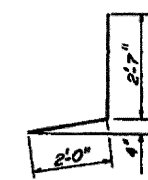
NOTE:
Work this sheet with sheets No. 6 & 7



CROSS SECTION
Looking Ahead Station

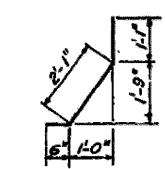


BAR a2



BAR d

NOTE: For Curb Section See Sheet No. 6



BAR d1

DESIGNED	H. R. S.
CHECKED	A. A.
DRAWN	A. M.
CHECKED	A. A.

EAST BOUND DECK DETAILS
 FA 403 SECTION 161-1B-4
 FA 403 OVER MEREDOSIA DITCH
 ROCK ISLAND & WHITE SIDE COUNTY
 STATION 944+69.00
 REV 9-27-77 I C

* FAI ROUTES 74 & 88
 ** D2 BRIDGE PAINTING 2008-1