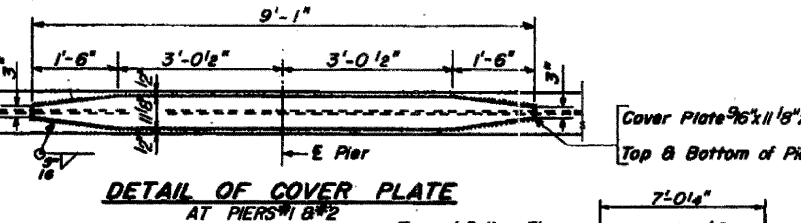
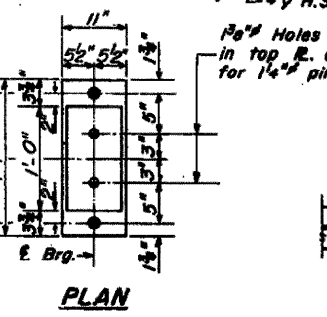
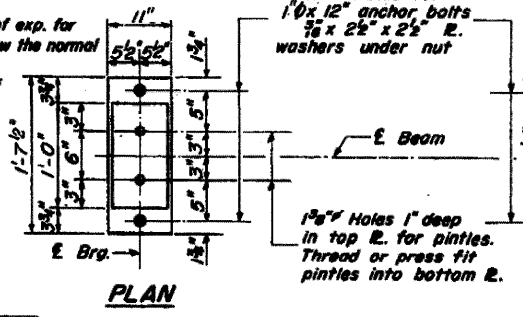
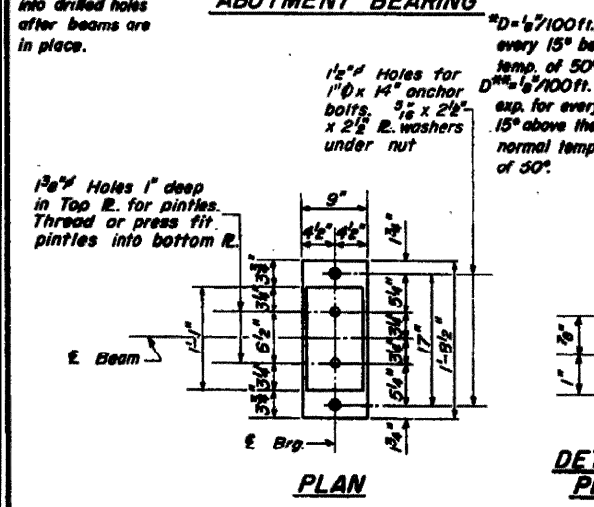
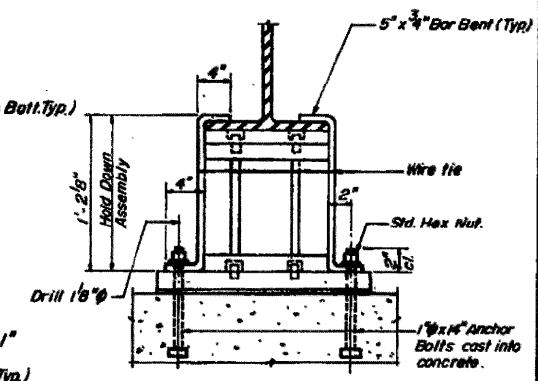
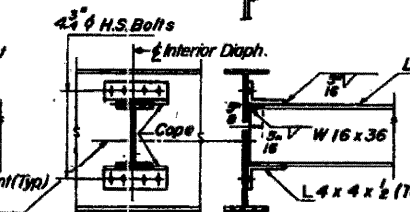
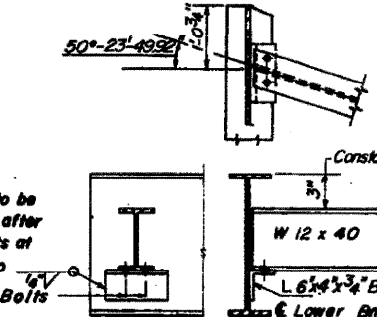
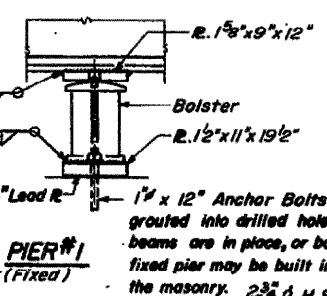
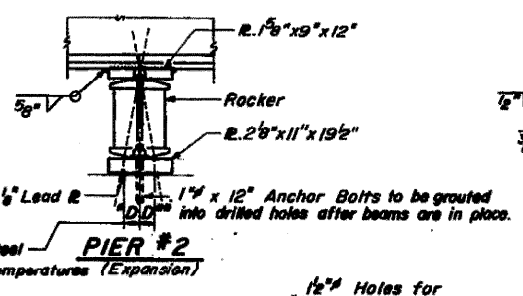
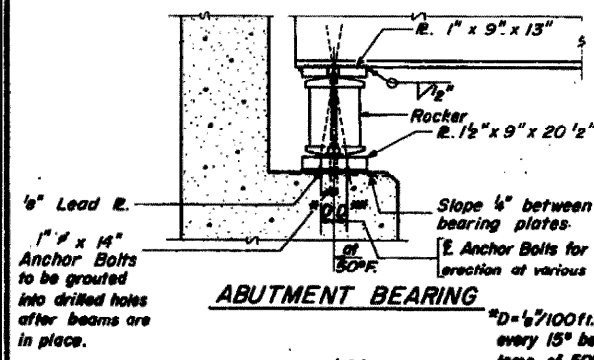
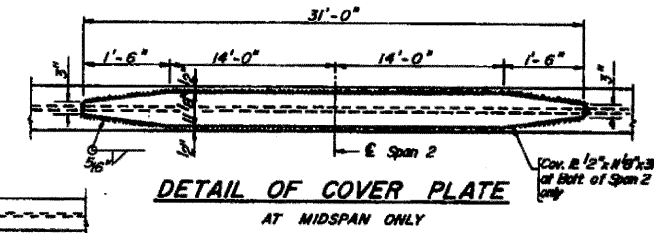
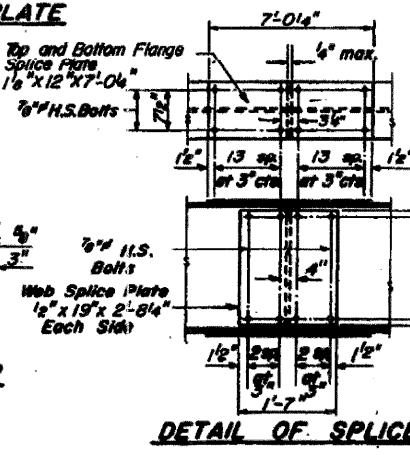
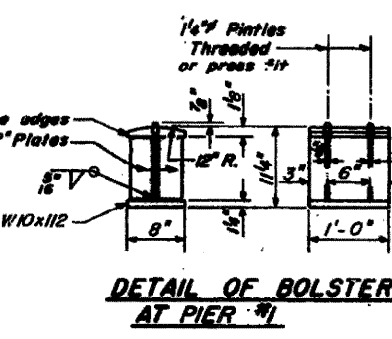
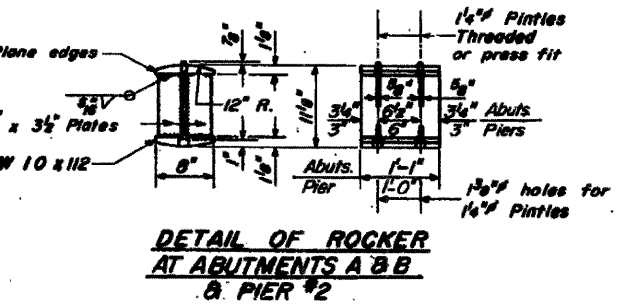
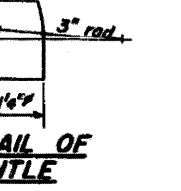


KEY PLAN
FOR INFORMATION ONLY
LOCATION 4 Structure Numbers 081-0135 & 0134

Bearing seat surfaces shall be constructed or adjusted to the designated elevations within a tolerance of ± 1/8 inch. Adjustment shall be made either by grinding the surface or by shimming the bearing. Two 1/8" adjusting shims, of the dimensions of the bottom bearing plate, shall be provided for each bearing in addition to all other plates or shims.



NOTE:
 Beams shall be held down at the abutment on the opposite end of bridge from which the deck pour is commenced. After pouring is completed the Hold Down Assembly shall be removed and nuts placed on Anchor Bolts.
 Cost of Hold Down Assembly incidental to Class X Concrete.



DESIGNED	H.R.S.
CHECKED	A.A.
DRAWN	A.M.
CHECKED	A.A.

SUPERSTRUCTURE STEEL
 FA 403 SECTION 161-1B-4
 FA 403 OVER MEREDOSIA DITCH
ROCK ISLAND & WHITE SIDE COUNTY
 STATION 944 + 89.00

* FAI ROUTES 74 & 88
 ** D2 BRIDGE PAINTING 2008-1