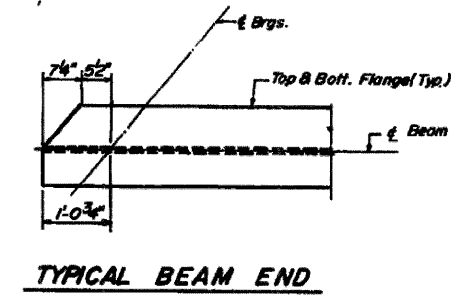
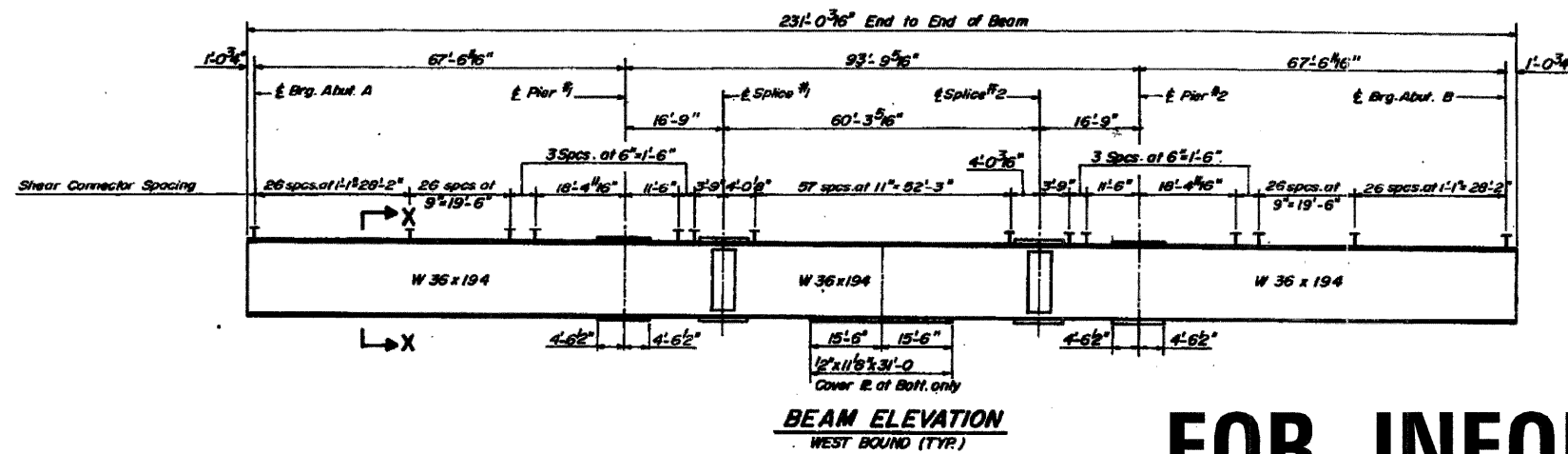
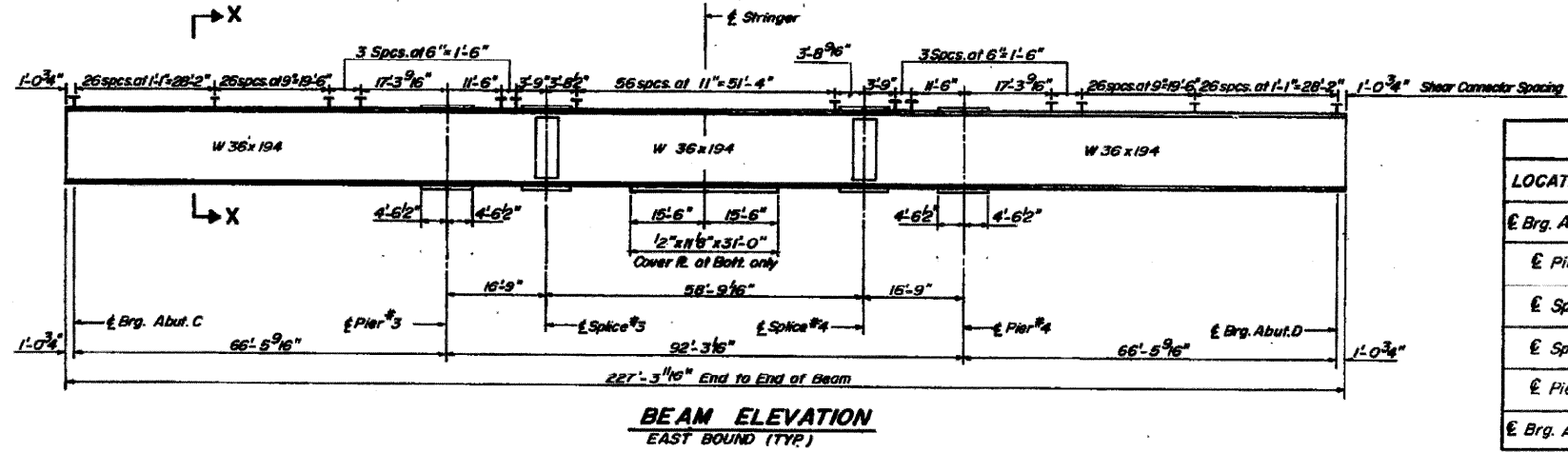


DATE	BY	CHKD	APP'D	SHEET NO. 13



FOR INFORMATION ONLY

LOCATION 4 Structure Numbers 081-0135 & 0134



WEST BOUND BRIDGE

***TOP OF BEAM ELEVATIONS**

LOCATION	BEAM#1	BEAM#2	BEAM#3	BEAM#4	BEAM#5	BEAM#6
€ Brg. Abut A	590.53	590.77	591.01	591.26	591.50	591.74
€ Pier 1	590.46	590.71	590.95	591.19	591.44	591.68
€ Splice 1	590.45	590.69	590.94	591.18	591.42	591.66
€ Splice 2	590.42	590.66	590.91	591.15	591.40	591.64
€ Pier 2	590.41	590.66	590.91	591.15	591.40	591.64
€ Brg. Abut B	590.41	590.66	590.91	591.15	591.40	591.65

EAST BOUND BRIDGE

*** TOP OF BEAM ELEVATIONS**

LOCATION	BEAM#1	BEAM#2	BEAM#3	BEAM#4	BEAM#5	BEAM#6
€ Brg. Abut C	591.36	591.59	591.83	592.06	592.30	592.53
€ Pier 3	591.35	591.58	591.82	592.05	592.29	592.52
€ Splice 3	591.34	591.58	591.82	592.05	592.29	592.52
€ Splice 4	591.36	591.60	591.84	592.07	592.31	592.55
€ Pier 4	591.36	591.61	591.85	592.09	592.33	592.56
€ Brg. Abut D	591.43	591.67	591.91	592.15	592.39	592.63

* For Fabrication Only

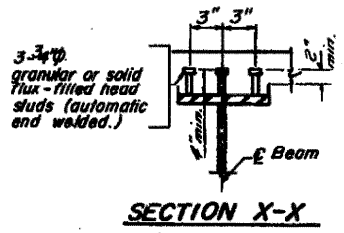
INTERIOR BEAM MOMENT TABLE

	Q4 Sp. 1 or 3	Pier 1 or 2	Q5 Sp. 2
I _s (in ⁴)	12103	16393	13835
I _c (in ⁴)	28982	—	34169
S _s (in ³)	663.5	871.9	809.1
S _c (in ³)	936.5	—	1132.7
Q (k/ft)	1.00	1.048	1.020
M _Q (k)	276.61	688	421.27
f _s Q (ksf)	5.00	9.61	6.25
S _Q (k)	47	47	47
M _s Q (k)	154.6	257.17	259.51
M _Q +Imp. (k)	703.7	486.3	818.0
Total (k)	858.3	743.47	1077.51
f _s L (ksf)	11.00	10.23	11.42
f _s Total (ksf)	16.0	20.0	17.67
VR (k)	55.0	—	55.5

(Composite in Positive Moment Areas only)

INTERIOR BEAM REACTION TABLE

	Abutment	Pier
R _Q (k)	35.8	132.4
R _L +Imp. (k)	58.2	77.0
R Total (k)	94.0	209.4



DESIGNED	H.R.S.
CHECKED	A.A.
DRAWN	A.S.
CHECKED	A.A.

I_s and S_s are the moment of inertia and section modulus of the steel section.
 I_c and S_c are the moment of inertia and section modulus of the composite section used in computing I_s.
 VR is the maximum L₄ + Impact shear range in span.

No. Req'd: 3204 West Bound
 3186 East Bound

SUPERSTRUCTURE STEEL
 FA 403 SECTION 161-1B-4
 FA 403 OVER MEREDOSIA DITCH

ROCK ISLAND & WHITE SIDE COUNTY
 * FAI ROUTES 74 & 88 STATION 944+69.00
 ** D2 BRIDGE PAINTING 2008-1