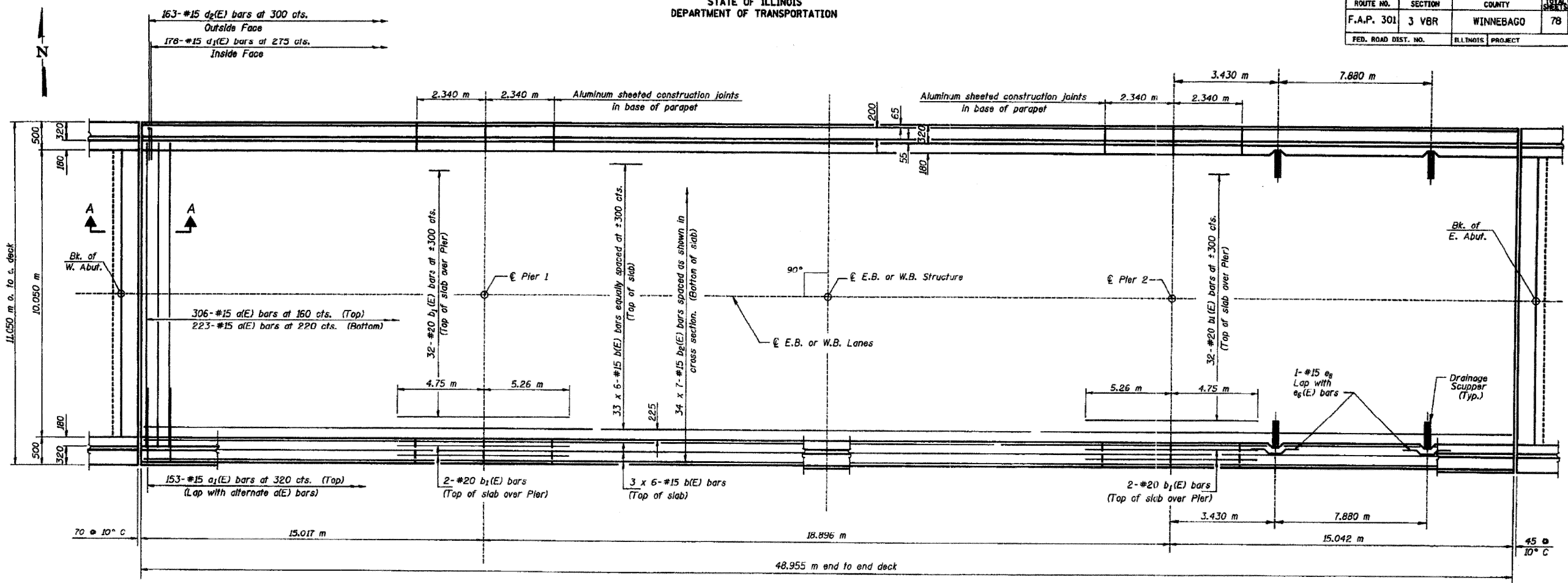


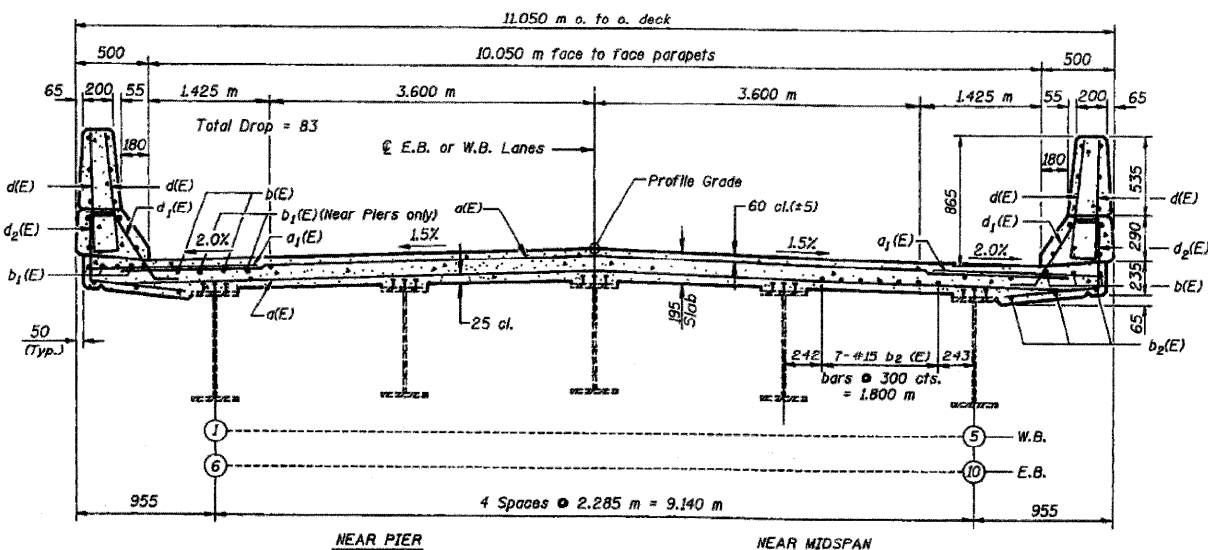
FOR INFORMATION ONLY

STATE OF ILLINOIS
DEPARTMENT OF TRANSPORTATION

ROUTE NO.	SECTION	COUNTY	TOTAL SHEETS	SHEET NO.
F.A.P. 301	3 VBR	WINNEBAGO	78	55
FED. ROAD DIST. NO.	ILLINOIS PROJECT			



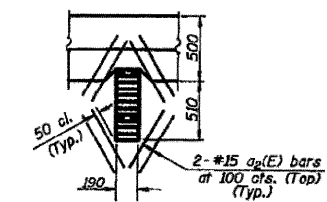
PLAN



CROSS SECTION
(Looking East)

Min. Bar Lap
#15 - 510

Notes: See Sheet #8 of 21 for superstructure details and Bill of Material.
Reinforcement bars designated (E) shall be epoxy coated.
Bars indicated thus 33 x 6-#15 etc. indicates 33 lines of bars with 6 lengths per line.
See Sheet #9 of 21 for parapet reinforcement.
All dimensions are in millimeters (mm) except as noted.
See Sheet #8 of 21 for Section A-A.



REINFORCEMENT AT
DRAINAGE SCUPPER
(Cut b1(E) or b2(E) bars as required at Scupper)

SUPERSTRUCTURE			
Date	Designed JMC	ILLINOIS U.S. ROUTE 20 OVER RAILNET RAILROAD	Sheet No.
Revisions	Drawn SRS	F.A.P. RTE. 301 SECTION 3 VBR WINNEBAGO COUNTY	7
	Checked KWB	STA. 16+090.327	of 21
	Approved KWB	STRUCTURES NO. 101-0063 (EB) & 101-0064 (WB)	
Prepared by: WVP CORPORATION		Engineers - Architects - Planners	WVP Job No. DTD00
A Division of URS Greiner		Des Moines - St. Louis - Missouri - Chicago, Illinois	

LOCATION 2 STRUCTURES 101-0063 & 101-0064 • D2 Bridge Painting 2008-3

FILE NAME =	USER NAME = linkdj	DESIGNED -	REVISED -
P:\PAINTING\64D91\paint2008-3.dgn		DRAWN -	REVISED -
		CHECKED -	REVISED -
		DATE -	REVISED -

STATE OF ILLINOIS
DEPARTMENT OF TRANSPORTATION

EXISTING BRIDGE PLANS
SCALE: SHEET NO. OF SHEETS STA. TO STA.

F.A.P. RTE.	SECTION	COUNTY	TOTAL SHEETS	SHEET NO.
301		WINNEBAGO	19	11
FED. ROAD DIST. NO.		ILLINOIS FED. AID PROJECT	CONTRACT NO. 64D91	