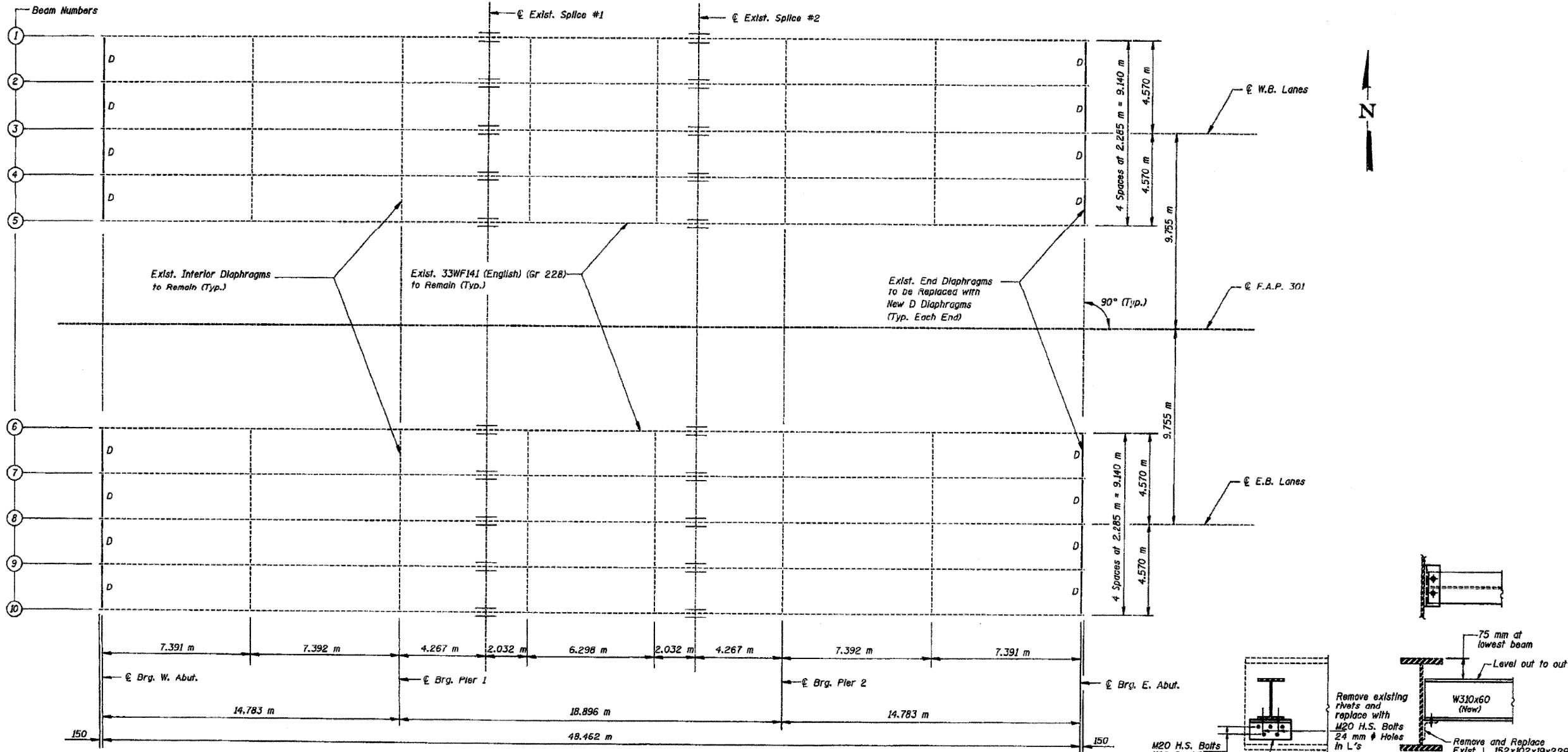


FOR INFORMATION ONLY

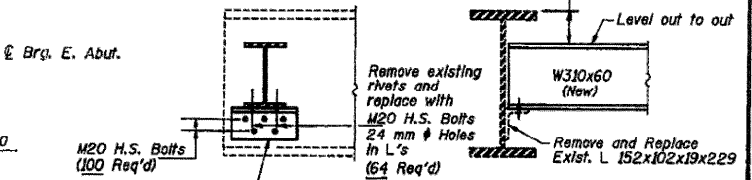
STATE OF ILLINOIS
DEPARTMENT OF TRANSPORTATION

ROUTE NO.	SECTION	COUNTY	TOTAL SHEETS	SHEET NO.
F.A.P. 301	3 VBR	WINNEBAGO	78	59
FED. ROAD DIST. NO.		ILLINOIS PROJECT		



FRAMING PLAN

Notes:
All Dimensions are in Millimeters (mm) except as Noted.



STRUCTURAL STEEL			
Date	Designed JMC	U.S. ROUTE 20 OVER RAILNET RAILROAD	Sheet No.
Revisions	Drawn SRS	ILLINOIS F.A.P. RTE. 301 SECTION 3 VBR WINNEBAGO COUNTY STA. 16+090.327	11
	Checked KWB	STRUCTURES NO. 101-0063 (EB) & 101-0064 (WB)	of 21
	Approved KWB	WVP CORPORATION Engineers - Architects - Planners A Division of URS Group, Inc. St. Louis, Missouri	WVP Job No. 070010

LOCATION 2 STRUCTURES 101-0063 & 101-0064

D2 Bridge Painting 2008-3

FILE NAME = P:\PAINTING\64D91\paint2008-3.dgn	USER NAME = linkdj	DESIGNED -	REVISED -	STATE OF ILLINOIS DEPARTMENT OF TRANSPORTATION	EXISTING BRIDGE PLANS	F.A.P. RTE. 301	SECTION 3	COUNTY WINNEBAGO	TOTAL SHEETS 19	SHEET NO. 13	
	PLOT SCALE = 50.0000 / IN.	DRAWN -	REVISED -			SCALE: SHEET NO. OF SHEETS STA. TO STA.		CONTRACT NO. 64D91		ILLINOIS FED. AID PROJECT	
	PLOT DATE = Thu Jan 24 07:59:37 2008	CHECKED -	REVISED -								
		DATE -	REVISED -								