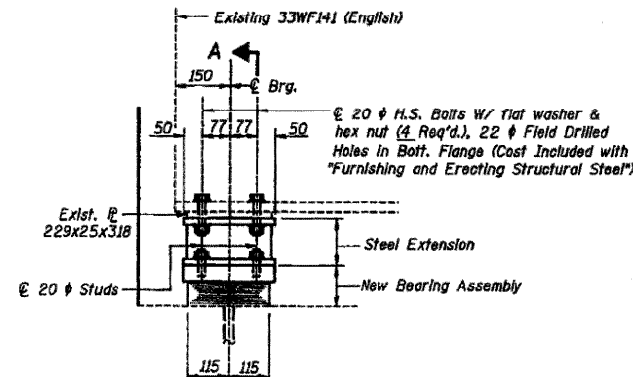


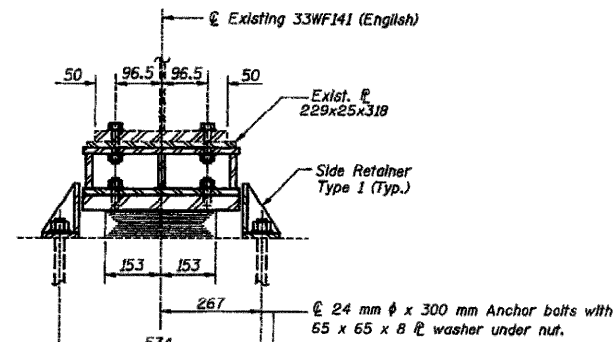
FOR INFORMATION ONLY

STATE OF ILLINOIS
DEPARTMENT OF TRANSPORTATION

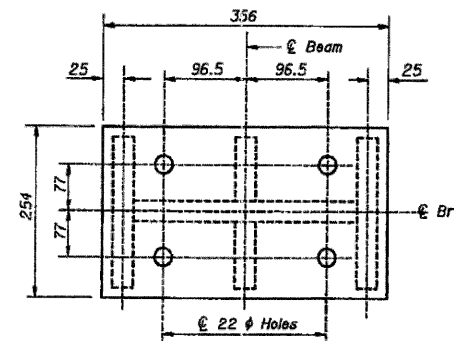
ROUTE NO.	SECTION	COUNTY	TOTAL SHEETS	SHEET NO.
F.A.P. 301	3 VBR	WINNEBAGO	78	62
FED. ROAD DIST. NO.		ILLINOIS PROJECT		



ELEVATION AT EAST ABUT.

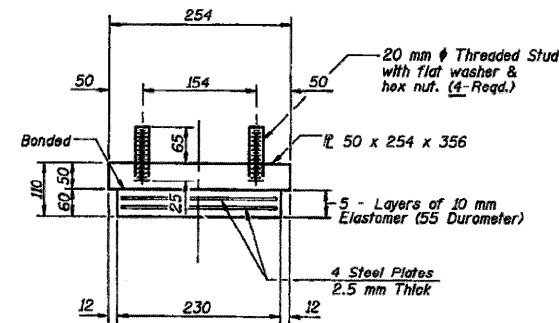


SECTION A-A



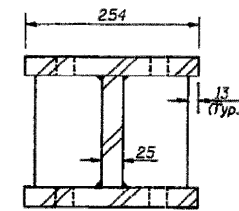
PLAN AT STEEL EXTENSION

Provide 13x254x356 Shim @ Beams 3 and 8

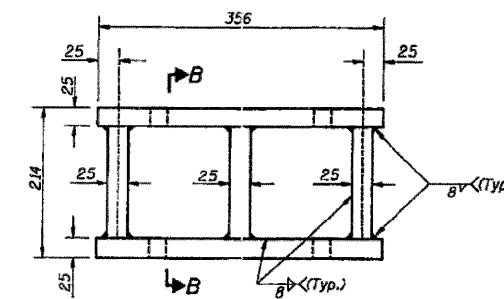


BEARING ASSEMBLY

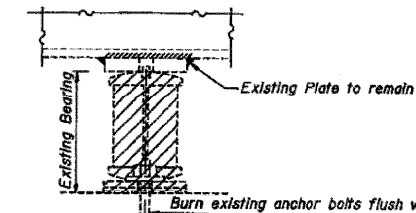
Note: Shim plates shall not be placed under Bearing Assembly.



SECTION B-B



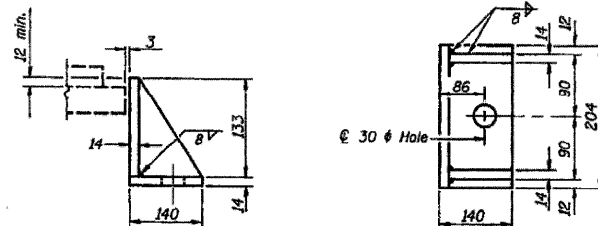
ELEVATION AT STEEL EXTENSION



EXISTING BEARING REMOVAL DETAIL

JACK AND REMOVE EXISTING BEARINGS PROCEDURE

- The Contractor shall submit, for approval by the Engineer, plans for jacking prior to commencing any work at the bearings.
- Jacking and removing existing bearings shall be done after existing deck removal is completed and before the new deck is poured.
- Jacking shall be limited to a maximum of 6/inch.
- The maximum dead load reaction with the deck removed (per bearing) at each abutment is 13.1 kN. The minimum Jack capacity at each abutment (per bearing) shall be 20.0 kN.
- The new bearing and steel extensions shall be in place and the jacks shall be lowered before the new concrete deck is poured.



SIDE RETAINER - TYPE 1

Equivalent rolled angle with stiffeners will be allowed in lieu of welded plates. Weight included with Structural Steel. (No. Req'd. = 20)

BILL OF MATERIAL
E.B. & W.B. STRUCTURES

Item	Unit	Total
Elastomeric Bearing Assembly Type 1	Each	10
Jack and Remove Existing Bearings	Each	10

Notes:
See sheet #21 of 21 for Anchor Bolt Installation.
All dimensions are in millimeters (mm) except as noted.
After beams have been erected, holes at expansion bearings shall be drilled and anchor bolts grouted into place.
Fabricated Steel Extension shall be paid for in accordance with Article 505 of the Standard Specifications and included in the cost for Furnishing and Erecting Structural Steel.

BEARING DETAILS - EAST ABUTMENT			
Designed JMC	U.S. ROUTE 20 OVER	Sheet No.	
Drawn SRS	ILLINOIS RAILNET RAILROAD	14	
Checked KWB	F.A.P. RTE. 301 SECTION 3 VBR	or 21	
Approved KWB	WINNEBAGO COUNTY		
	STRUCTURES NO. 101-0063 (EB) & 101-0064 (WB)		
WVP CORPORATION Engineers - Architects - Planners FED. ROAD DIST. NO. ILLINOIS FED. AID PROJECT			

LOCATION 2 STRUCTURES 101-0063 & 101-0064

• D2 Bridge Painting 2008-3

FILE NAME =	USER NAME = lmkdj	DESIGNED -	REVISED -
P:\PAINTING\64D91\paint2008-3.dgn		DRAWN -	REVISED -
		CHECKED -	REVISED -
		DATE -	REVISED -

STATE OF ILLINOIS
DEPARTMENT OF TRANSPORTATION

EXISTING BRIDGE PLANS

SCALE: SHEET NO. OF SHEETS STA. TO STA.

F.A.P. RTE.	SECTION	COUNTY	TOTAL SHEETS	SHEET NO.
301		WINNEBAGO	19	16
FED. ROAD DIST. NO. ILLINOIS FED. AID PROJECT			CONTRACT NO. 64D91	