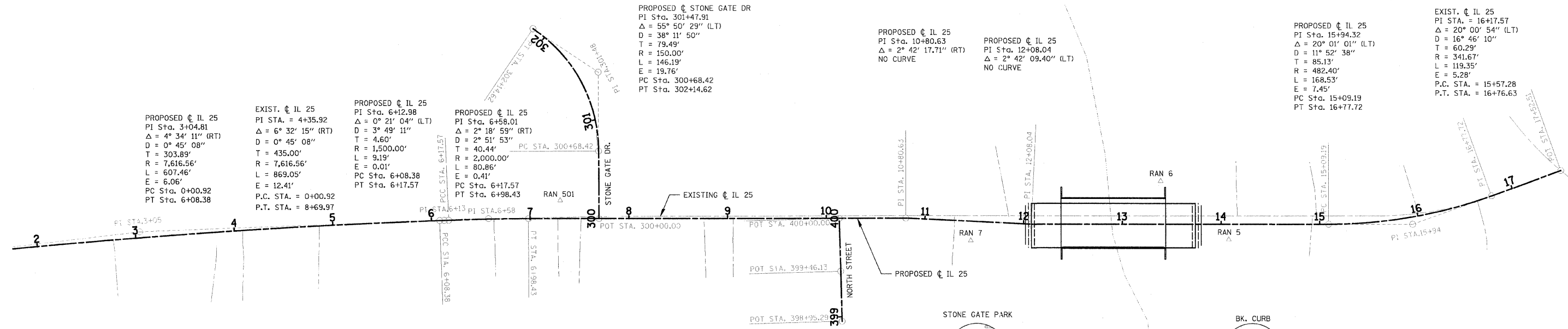
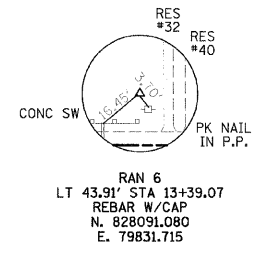
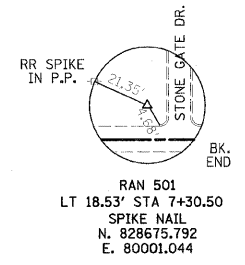
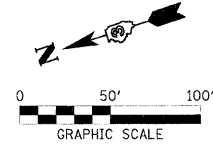


F.A.U. 2503	SECTION (35)BR-2	COUNTY KENDALL	SHEET 129	SHEET NO. 10
FED. ROAD DIST. NO. 5		ILL. PROJ. NO. 12-06-0028-1		



LOCATION	PT #	NORTHING	EASTING
PROPOSED CENTERLINE IL RTE 25			
P.O.T. Sta. 0+00.00	1000	829389.120100	80163.470000
P.I. Sta. 3+04.81	1001	829090.363531	80103.020867
P.I. Sta. 6+12.98	1002	828793.838319	80017.947730
P.I. Sta. 6+58.01	1003	828750.476501	80005.794338
P.I. Sta. 10+80.63	1004	828348.473996	79875.380841
P.I. Sta. 12+08.04	1005	828229.271377	79830.389076
P.I. Sta. 15+94.32	1006	827861.839981	79711.174426
P.O.T. Sta. 17+52.51	1007	827702.020000	79716.870000
EXISTING CENTERLINE IL RTE 25			
P.O.T. Sta. 0+00.00	1010	829389.120130	80163.470026
P.I. Sta. 4+35.92	1011	828961.860000	80077.020000
P.I. Sta. 12+87.00	1012	829389.120130	80163.470026
P.I. Sta. 16+17.57	1013	827836.990000	79712.060000
P.O.T. Sta. 17+51.40	1014	829389.120130	79716.870000
PROPOSED CENTERLINE NORTH ST			
P.O.T. Sta. 398+95.29	1020	828442.341000	79795.790000
P.O.T. Sta. 399+46.13	1021	828427.896000	79844.530000
P.O.T. Sta. 400+00.00	1022	828412.588506	79896.180208
PROPOSED CENTERLINE STONE GATE DRIVE			
P.O.T. Sta. 300+00.00	1030	828644.096679	79971.283696
P.I. Sta. 301+47.91	1031	828596.941083	80112.137003
P.T. Sta. 302+14.62	1032	828647.952495	80174.719540

BENCHMARKS
BM #3 BOX CUT IN S.E. CORNER OF DOUBLE HANDHOLE @ S.W. CORNER OF IL RTE 25 & US RTE 34. ELEVATION 639.174
BM #4 "X" CUT IN TOP BOLT PM HYDRANT @ N.E. CORNER OF JACKSON ST. & US RTE 34. ELEVATION 647.54
BM #6 BOX CUT ON TOP OF N.W. CORNER ON NORTH HEADWALL @ IL RTE 25 AND NORTH ST. ELEVATION 626.365 STA. 9+96, 47' RT.
BM #7 RR SPIKE IN PP/SL @ NE CORNER OF IL RTE. 25 & STONE GATE DRIVE. ELEVATION 630.220 STA. 7+13, 30.5' LT.
BM # 100 N.W. BOLT ON HYDRANT @ S.E. CORNER OF WASHINGTON ST & MADISON ST "X" CUT ON BOLT. ELEVATION 641.26

NOTE: BENCHMARKS AND CONTROL POINTS ARE REFERENCED FROM THE PROPOSED CENTERLINE.

HAMPTON, LENZINI & RENWICK, INC.
CIVIL & STRUCTURAL ENGINEERS

3085 STEVENSON DRIVE, SUITE 201
SPRINGFIELD, ILLINOIS 62703
(217) 546-3400

ELGIN • SPRINGFIELD

PROJECT NUMBER: 12-06-0028-1 DATE: 06/01/07
DESIGNED: LFS CHECKED: S.W.M. DRAWN: WJS

**ALIGNMENTS, TIES,
AND BENCHMARKS**

SECTION (35) BR-2
IL 25 OVER WAUBONSEE CREEK
KENDALL COUNTY

FILED: DATE: 11/25/2008 FILE NAME: F:\11\11\060028\12\06\01\07\HAMPTON\2503\35BR-2\129.dwg