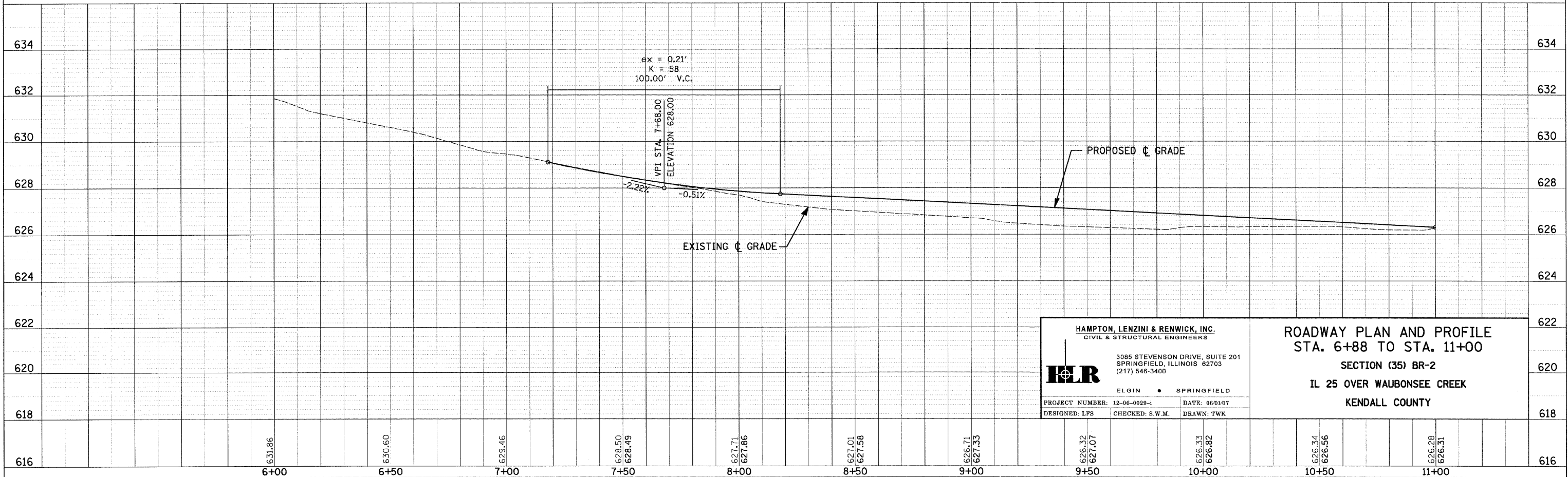
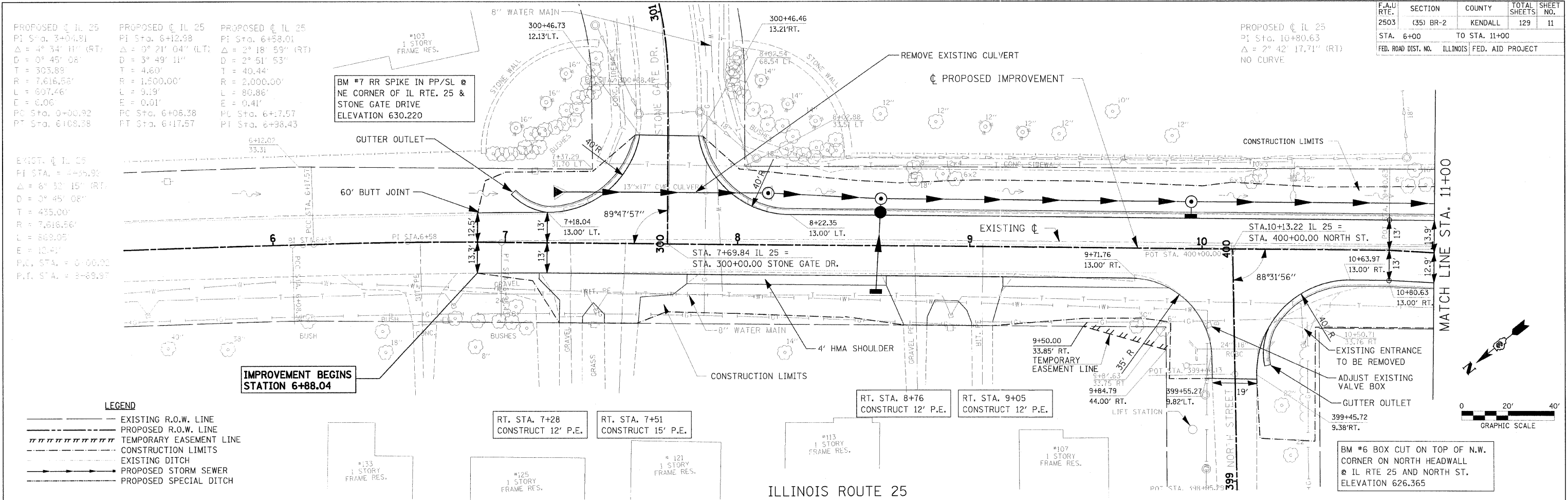


F.A.U. RTE.	SECTION	COUNTY	TOTAL SHEETS	SHEET NO.
2503	(35) BR-2	KENDALL	129	11
STA. 6+00		TO STA. 11+00		
FED. ROAD DIST. NO.		ILLINOIS	FED. AID PROJECT	



HAMPTON, LENZINI & RENWICK, INC.
CIVIL & STRUCTURAL ENGINEERS

3085 STEVENSON DRIVE, SUITE 201
SPRINGFIELD, ILLINOIS 62703
(217) 546-3400

ELGIN • SPRINGFIELD

PROJECT NUMBER: 12-06-0029-1 DATE: 06/01/07
DESIGNED: LFS CHECKED: S.W.M. DRAWN: TWK

ROADWAY PLAN AND PROFILE
STA. 6+88 TO STA. 11+00

SECTION (35) BR-2
IL 25 OVER WAUBONSEE CREEK
KENDALL COUNTY

PLANS
 PREPARED BY: [Name]
 CHECKED BY: [Name]
 DATE: [Date]

PROFILE
 PREPARED BY: [Name]
 CHECKED BY: [Name]
 DATE: [Date]

PLOT DATE: 11/21/2008
 PLOT SCALE: 1"=40'