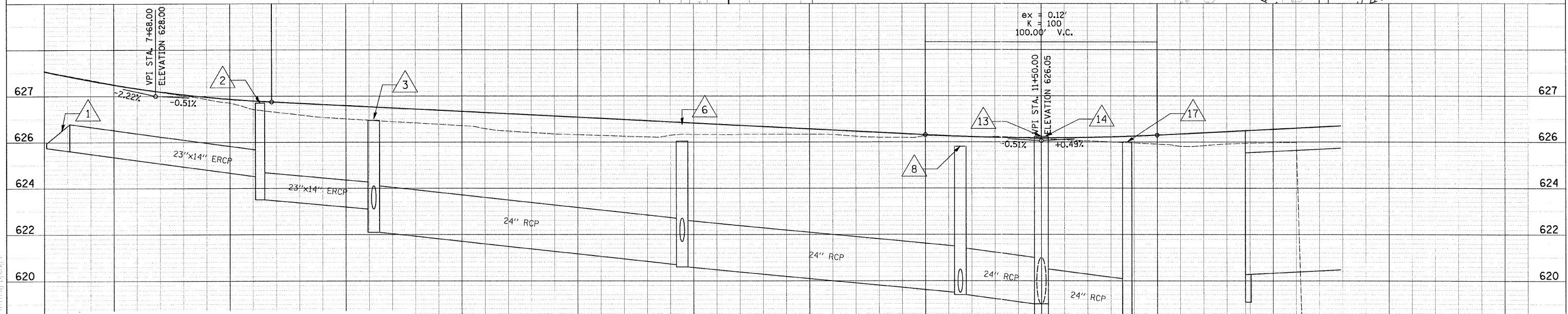
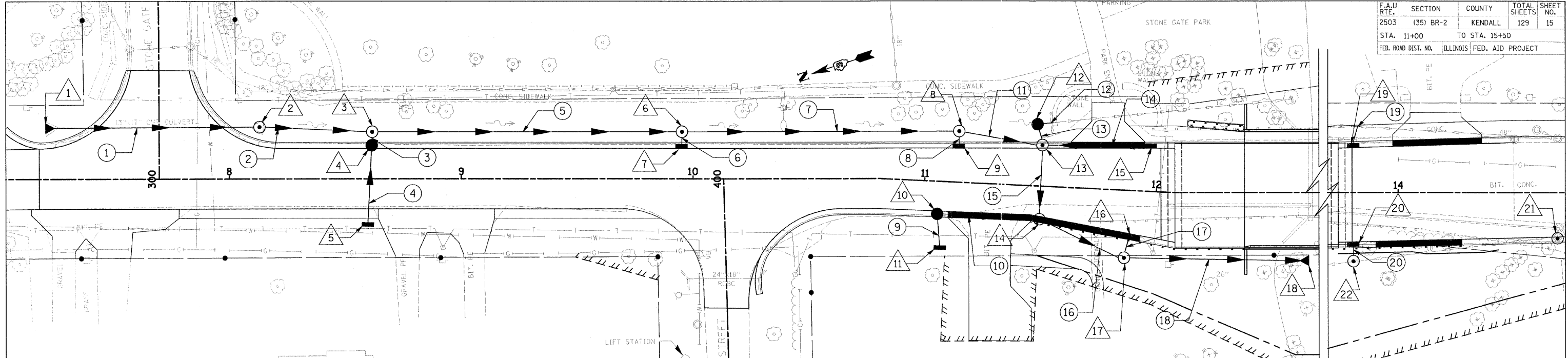


F.A.U. RTE.	SECTION	COUNTY	TOTAL SHEETS	SHEET NO.
2503	(35) BR-2	KENDALL	129	15
STA. 11+00		TO STA. 15+50		
FED. ROAD DIST. NO.		ILLINOIS FED. AID PROJECT		



DATE: _____
 DRAWN BY: _____
 CHECKED BY: _____
 PROJECT NO.: _____
 SHEET NO.: _____

DRAINAGE STRUCTURE TABLE

NO.	STA.	OFFSET	STRUCTURE TYPE/SIZE	FRAME & GRATE	RIM ELEV TC/FR	INVERT (N)	INVERT (S)	INVERT (E)	INVERT (W)
1	7+21	22' LT	EPRC FES 23x14			626.75			
2	8+13	22' LT	A4	T-1CL	627.70	624.50	623.50		
3	8+62	20' LT	A5	T-8	626.80	623.10	622.10		623.10
4	8+61	15' LT	B	T-24	627.65			623.20	623.20
5	8+60	20' RT	A	T-8	626.50			623.50	
6	9+95	20' LT	A5	T-8	626.00	620.70	620.60		621.70
7	9+95	15' LT	A	T-24	626.96			621.80	
8	11+15	20' LT	A5	T-8	625.90	619.50	619.40		619.50
9	11+15	15.5' LT	A	T-24	626.35			619.60	
10	11+06	14' RT	B	T-24	626.42		620.90		621.00
11	11+07	29' RT	A	T-8	626.20			621.20	
12	11+48	27' LT	B	T-8	624.40		622.40		621.40
13	11+60	16' LT	A6	T3V	626.24	619.00	622.30	621.30	619.00
14	11+50	14' RT	A6	T3V	626.30	620.40	618.50	618.60	
15	11+58	19.5' LT	A	T-24	626.31	622.80			
16	11+90	20' RT	A	T-24	626.36				622.36
17	11+87	30' RT	A4	T-1CL	626.00	618.10	608.30	622.20	
18	12+62	29.5' RT		PRC FES 24		607.50			
19	13+81	21' LT	A	T-24	627.27			622.50	
20	13+81	22' RT	A	T-24	627.23			622.20	
21	14+69	19' RT	A4	T-24	629.30	623.10	623.10		
22	13+81	30' RT	A4	T-1CL	626.00	614.30	614.30		622.00
23	13+32	36' RT		PRC FES 18		609.50			

PIPE TABLE

PIPE NO.	FROM STR #	TO STR #	DESCRIPTION	DIA (IN)	L (FT)	S (%)	TRENCH BACKFILL VOL (CY)
1	1	2	ERCP	23x14	90	1.39	
2	2	3	ERCP	23x14	50	0.80	
3	4	3	RCP	12	5	2.00	
4	5	4	RCP	12	34	1.18	5.9
5	3	6	RCP	24	132	1.06	
6	7	6	RCP	12	5	2.00	
7	6	8	RCP	24	120	0.92	
8	9	8	RCP	12	5	2.00	
9	11	10	RCP	12	14	1.43	
10	10	14	RCP	12	45	1.11	3.3
11	8	13	RCP	24	35	1.14	1.0
12	12	EX	RCP	12	3	1.00	
13	12	13	RCP	12	5	2.00	
14	15	13	RCP	12	45	1.11	
15	13	14	RCP	24	32	1.25	
16	14	17	RCP	24	40	1.00	20.2
17	16	17	RCP	12	10	1.60	
18	17	18	RCP	24	76	1.07	
19	19	EX	RCP	12	5	2.00	
20	20	22	RCP	12	6	3.33	

HAMPTON, LENZINI & RENWICK, INC.
 CIVIL & STRUCTURAL ENGINEERS

3085 STEVENSON DRIVE, SUITE 201
 SPRINGFIELD, ILLINOIS 62703
 (217) 548-3400

ELGIN • SPRINGFIELD

PROJECT NUMBER: 12-06-0029-1 DATE: 06/01/07
 DESIGNED: LFS CHECKED: S.W.M. DRAWN: TWK

STORM SEWER PLAN AND PROFILE
 SECTION (35) BR-2
 IL 25 OVER WAUBONSEE CREEK
 KENDALL COUNTY

PLOT DATE: 1/23/2008 FILE NAME: P:\12-06-0029-1\Drawings\12-06-0029-1.dwg USER: twk PLOTTER: HP DesignJet 500