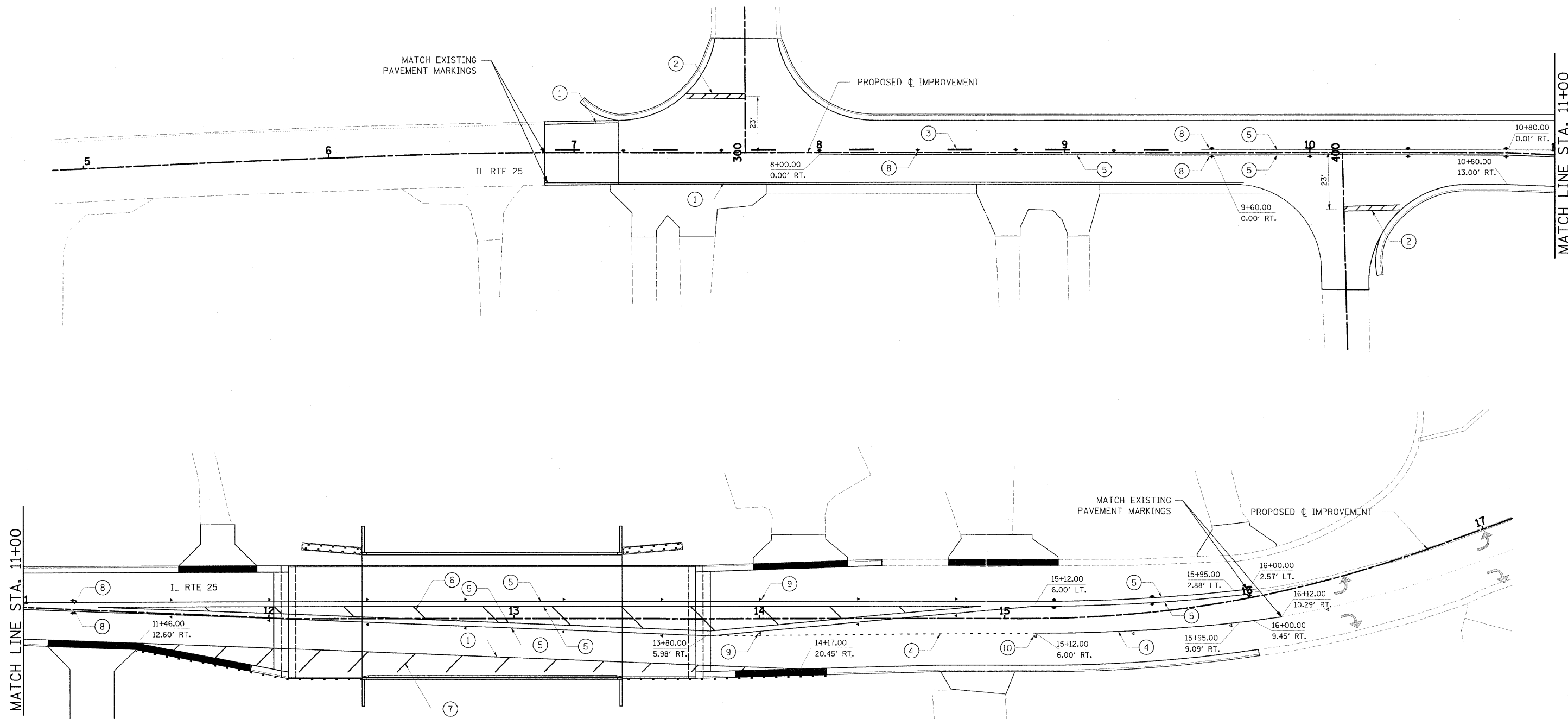
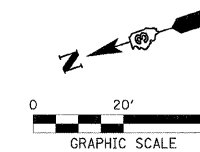


ROUTE NO.	SECTION	COUNTY	TOTAL SHEETS	SHEET NO.
FAU 2503	(35)BR-2	KENDALL	129	17
FED. ROAD DIST. NO.	5	ILLINOIS	FED. AID PROJECT-	



LEGEND

- 1 POLYUREA PAVEMENT MARKING TYPE I - LINE 4" (WHITE EDGE LINE)
- 2 POLYUREA PAVEMENT MARKING TYPE I - LINE 24" (WHITE STOP LINE)
- 3 POLYUREA PAVEMENT MARKING TYPE I - LINE 6" (YELLOW DASH LINE)
- 4 POLYUREA PAVEMENT MARKING TYPE I - LINE 8" (WHITE TURN LANE)
- 5 POLYUREA PAVEMENT MARKING TYPE I - LINE 4" (YELLOW SOLID LINE)
- 6 POLYUREA PAVEMENT MARKING TYPE I - LINE 12" (YELLOW DIAGONAL @ 20' CENTERS)
- 7 POLYUREA PAVEMENT MARKING TYPE I - LINE 12" (WHITE DIAGONAL @ 20' CENTERS)
- 8 RAISED REFLECTIVE PAVEMENT MARKERS TWO-WAY AMBER MARKER
- 9 RAISED REFLECTIVE PAVEMENT MARKERS ONE-WAY AMBER MARKER
- 10 RAISED REFLECTIVE PAVEMENT MARKERS ONE-WAY CRYSTAL MARKER

**HAMPTON, LENZINI & RENWICK, INC.**  
 CIVIL & STRUCTURAL ENGINEERS

**HLR**

3085 STEVENSON DRIVE, SUITE 201  
 SPRINGFIELD, ILLINOIS 62703  
 (217) 546-3400

ELGIN • SPRINGFIELD

PROJECT NUMBER: 12-06-0029-1      DATE: 06/01/07  
 DESIGNED: LFS      CHECKED:      DRAWN: WJS

**PERMANENT PAVEMENT MARKING**

SECTION (35) BR-2  
 IL 25 OVER WAUBONSEE CREEK  
 KENDALL COUNTY

PLOT DATE: 11/21/2008 FILE NAME: P:\12\2008\12-06-0029-1\12-06-0029-1-r-pvntmark.dgn