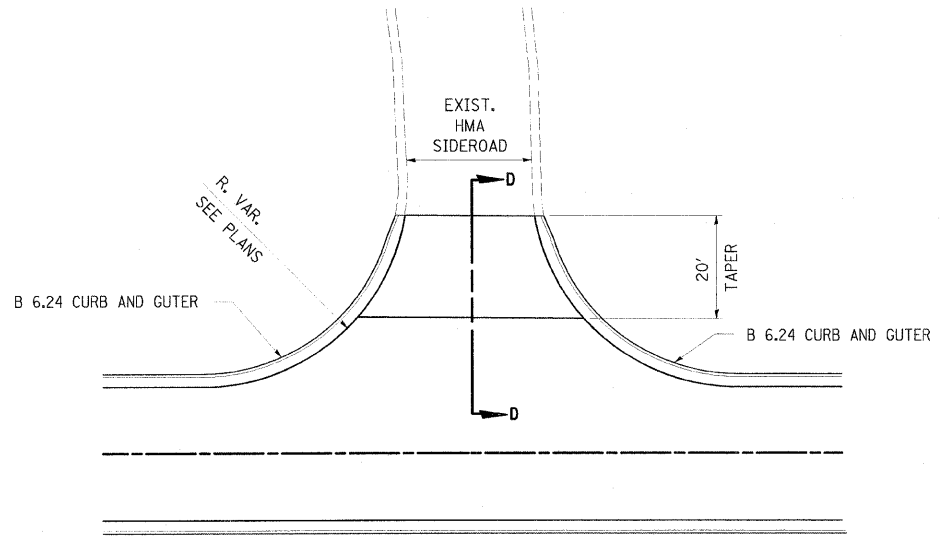
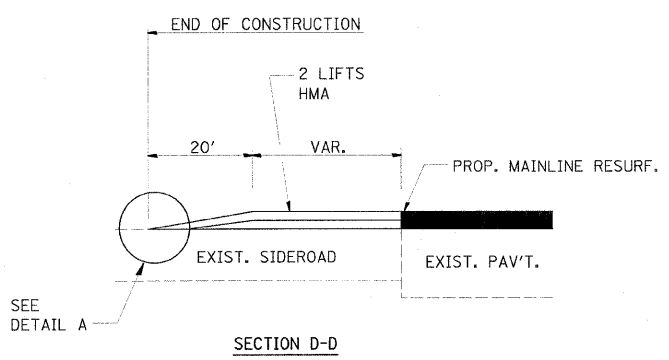


ROUTE NO. FAU 2503	SUBSECTION (35)BR-2	COUNTY KENDALL	TOTAL SHEETS 129	SHEET NO. 18
FED. ROAD DIST. NO. 5		ILLINOIS	PROJ. AND PROJECT	

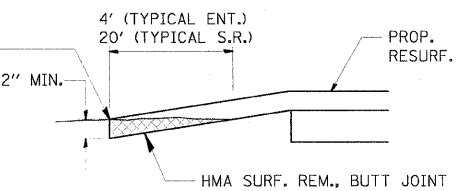


SIDEROAD DETAIL

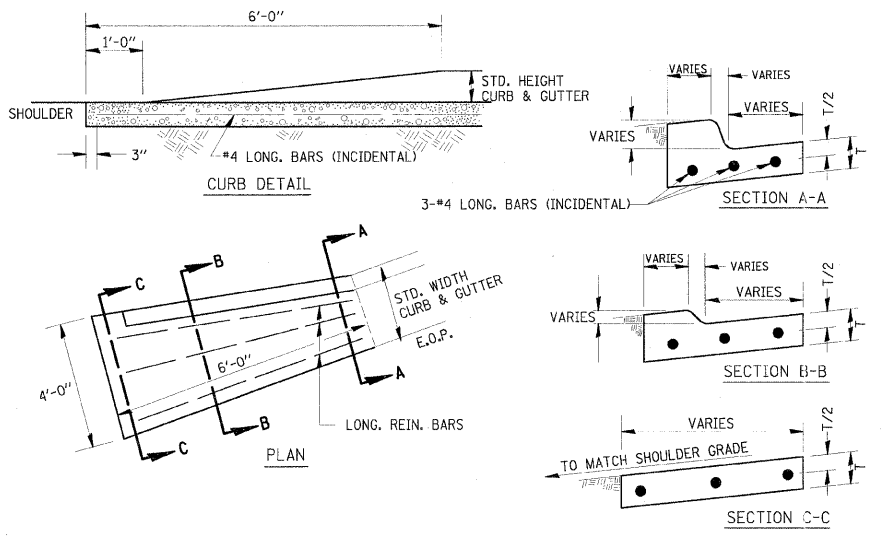


SECTION D-D

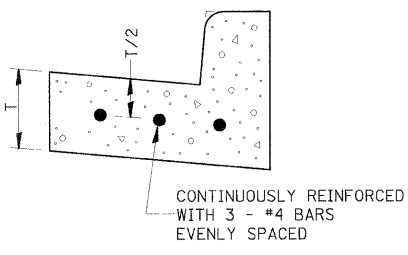
THE COST OF REMOVAL AT EXISTING H.M.A. OR P.C.C. LOCATIONS SHALL BE PAID FOR PER SQ. YD. BY THE APPROPRIATE PAY ITEM. REMOVAL AT EXISTING AGG. LOCATIONS SHALL BE INCIDENTAL TO THE H.M.A.



DETAIL A

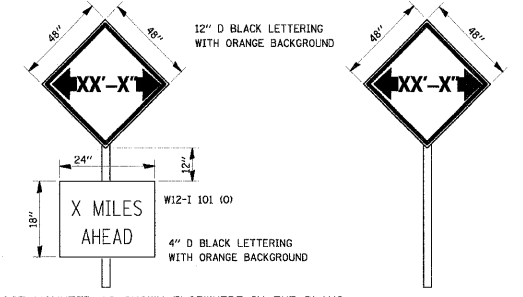


CURB & GUTTER OUTLET, SPECIAL



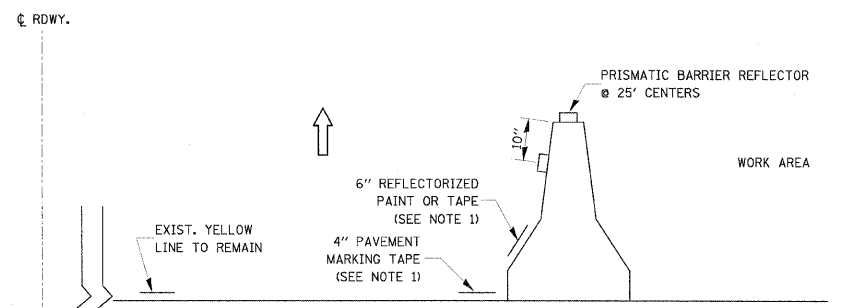
REINFORCEMENT DETAIL FOR COMBINATION CONCRETE CURB AND GUTTER TYPE B-6.24

REINFORCEMENT SHALL NOT BE PAID FOR SEPARATELY BUT WILL BE INCLUDED IN THE CONTRACT UNIT PRICE FOR CC&G.



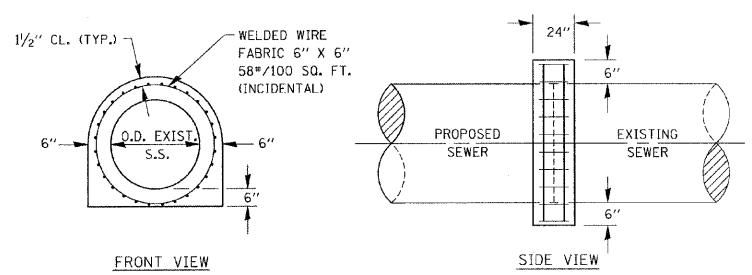
TO BE POST MOUNTED AS SHOWN ELSEWHERE IN THE PLANS.
 THE CONTRACTOR SHALL NOTIFY THE ENGINEER A MINIMUM OF 21 DAYS PRIOR TO INSTALLING ANY TRAFFIC CONTROL DEVICES THAT RESTRICT THE PAVEMENT WIDTH.
 THE CONTRACTOR SHALL BE RESPONSIBLE FOR COORDINATING WITH THE ENGINEER TO MEET THIS REQUIREMENT.
 COST OF SUPPLYING, INSTALLING, MAINTAINING AND REMOVING WIDTH RESTRICTION SIGNS SHALL BE INCLUDED IN THE TRAFFIC CONTROL AND PROTECTION PAY ITEMS.
 STAGE 1 WIDTH RESTRICTION TO BE POSTED AT 9'-3\"/>

WIDTH RESTRICTION SIGNING DETAILS



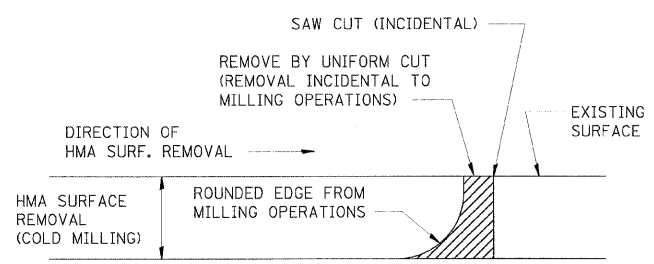
- NOTES:
1. THE CONTRACTOR HAS THE OPTION OF USING EITHER THE LINE ON THE TEMPORARY CONCRETE BARRIER OR ON THE PAVEMENT.
 2. THE COLOR OF THE REFLECTORS AND PAVEMENT/BARRIER MARKING LINE WILL VARY WITH STAGING AND SHALL MATCH THE EXISTING LINE IN THE WORK AREA.
 3. THE COST OF THE REFLECTORS AND THE PAVEMENT/BARRIER MARKING LINE IS INCLUDED IN THE COST OF THE TEMPORARY CONCRETE BARRIER.

BARRIER WALL REFLECTOR



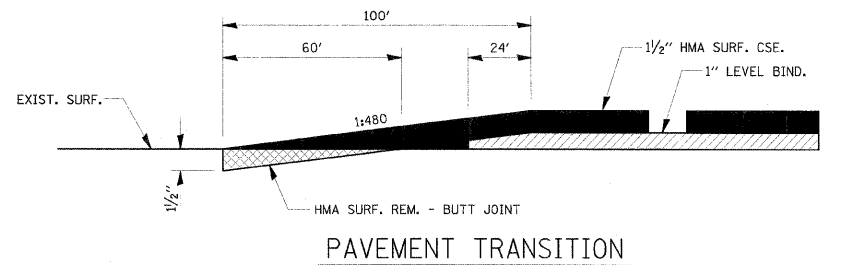
CONCRETE COLLAR FOR SEWER CONNECTION

550-1



NOTE: WHEN MILLING OPERATIONS PRODUCE A ROUNDED EDGE, THEN A SAW CUT SHALL BE USED TO MANUFACTURE A PERPENDICULAR EDGE AS SHOWN IN THE DETAIL. THE ENGINEER SHALL BE THE SOLE JUDGE CONCERNING THE USE OF THIS DETAIL

HMA DETAIL AT BUTT JOINTS



PAVEMENT TRANSITION

HAMPTON, LENZINI & RENWICK, INC.
 CIVIL & STRUCTURAL ENGINEERS

3085 STEVENSON DRIVE, SUITE 201
 SPRINGFIELD, ILLINOIS 62703
 (217) 546-3400

ELGIN • SPRINGFIELD

PROJECT NUMBER: 12-06-0029-1 DATE: 06/01/07
 DESIGNED: LFS CHECKED: DRAWN: TWK

MISCELLANEOUS DETAILS
 SECTION (35) BR-2
 IL 25 OVER WAUBONSEE CREEK
 KENDALL COUNTY

FILE NO. 12-06-0029-1-18
 DATE: 11/31/2003
 FILE NO. 12-06-0029-1-18
 DATE: 11/31/2003