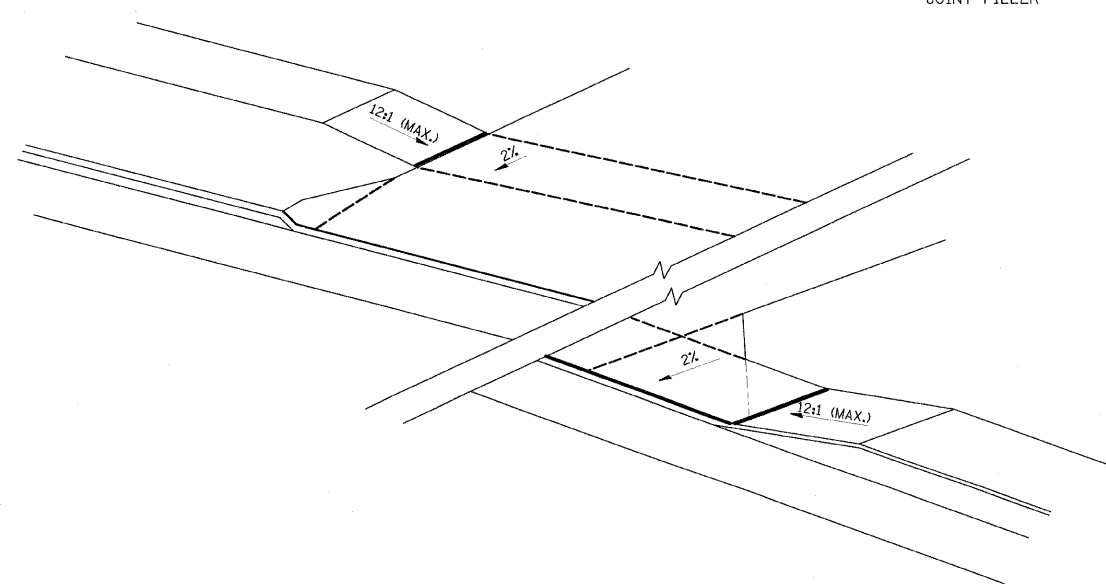
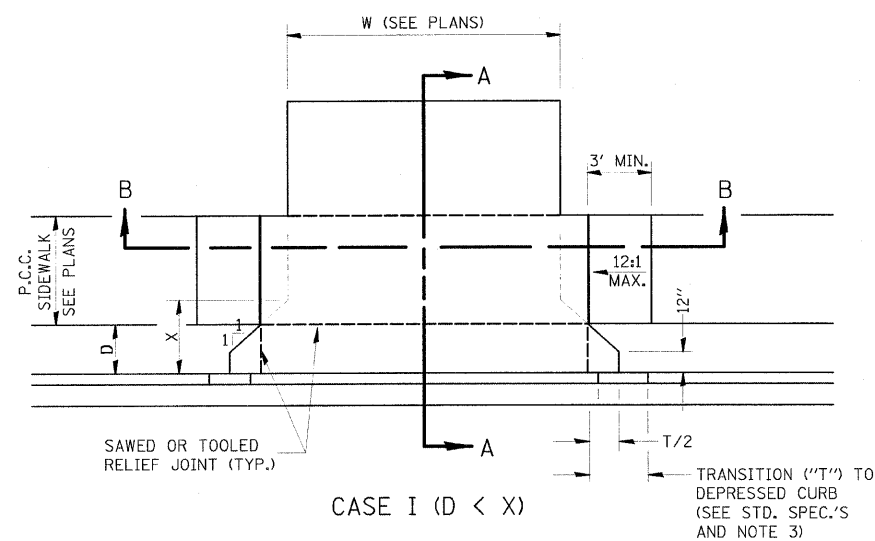
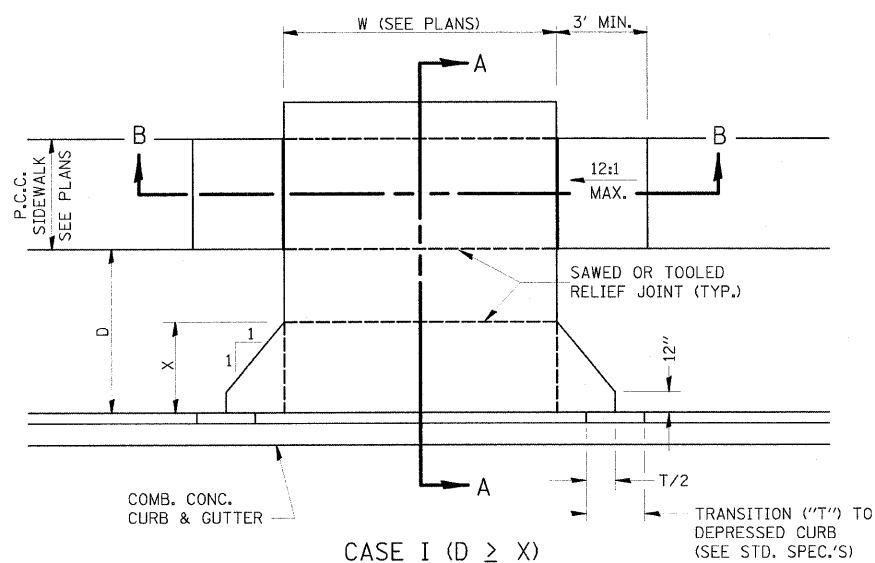
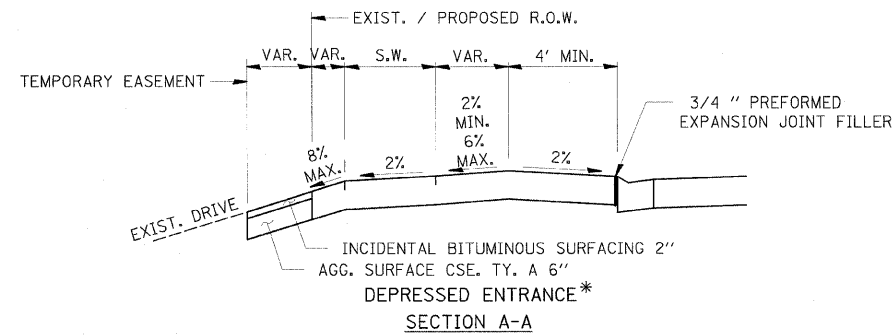


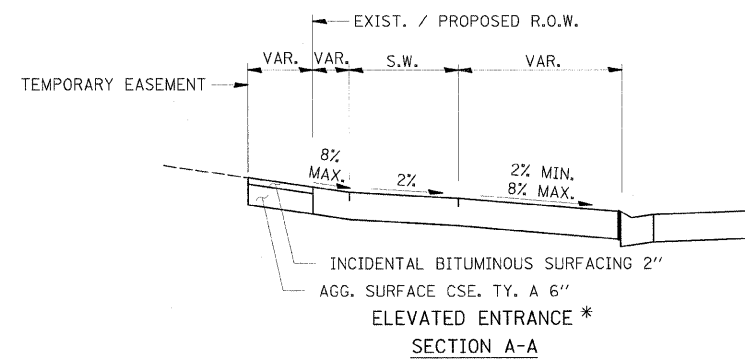
REVISED	DATE	BY	REASON
FAU 2503	(35)BR-2	KENDALL	129
5			



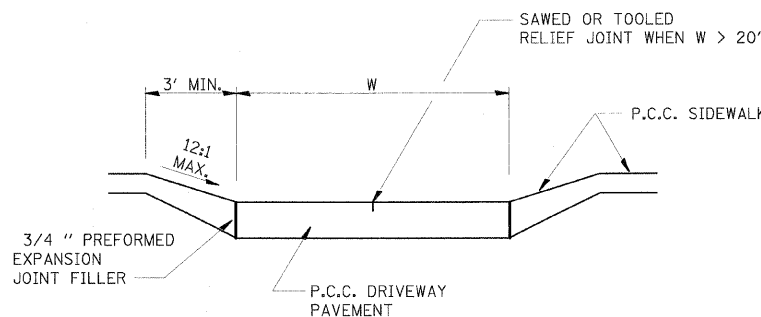
**PCC URBAN ENTRANCES**



SECTION A-A  
\*(SEE X-SECTIONS FOR ENTRANCE PROFILE.)

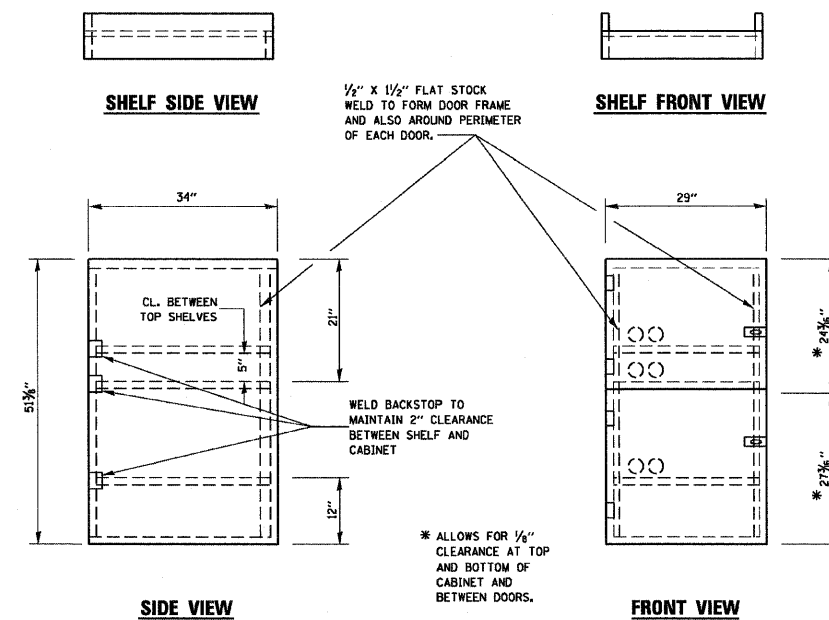


SECTION A-A

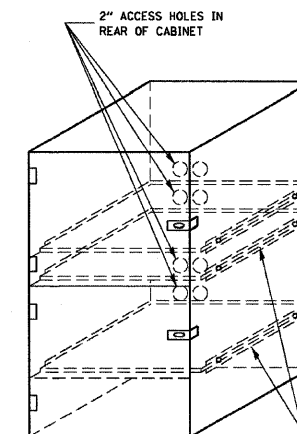


SECTION B-B

- GENERAL NOTES:
- X = 7' (NON-COMMERCIAL) X = 15' (COMMERCIAL)
  - COST OF EXPANSION JOINTS AND RELIEF JOINTS SHALL BE INCLUDED IN THE COST OF THE P.C.C. DRIVEWAY PAVEMENT.
  - AS THE DIMENSION "D" APPROACHES ZERO, THE TRANSITION TO DEPRESSED CURB SHALL BE NO STEEPER THAN 12:1



\* ALLOWS FOR 1/8\"/>



FLAT STOCK DIMENSIONS VARY DEPENDING ON TYPE OF ROLLER ASSEMBLY

- NOTES:
- USE 16 GAUGE STEEL FOR CABINET.
  - THE TOP SHELF SHALL SLIDE IN OR OUT WITH THE TOP DOOR OPEN.
  - ALL HINGES AND HASPS WILL BE WELDED TO THE CABINET.
  - ALL EDGES SHALL BE GROUND SMOOTH.
  - TWO (2\"/>

**LOCKABLE COMPUTER CABINET**

**670-1**

**HAMPTON, LENZINI & RENWICK, INC.**  
CIVIL & STRUCTURAL ENGINEERS

3085 STEVENSON DRIVE, SUITE 201  
SPRINGFIELD, ILLINOIS 62703  
(217) 546-3400

ELGIN • SPRINGFIELD

PROJECT NUMBER: 12-06-0029-1 DATE: 06/01/07  
DESIGNED: LFS CHECKED: DRAWN: TWK

MISCELLANEOUS DETAILS  
SECTION (35) BR-2  
IL 25 OVER WAUBONSEE CREEK  
KENDALL COUNTY