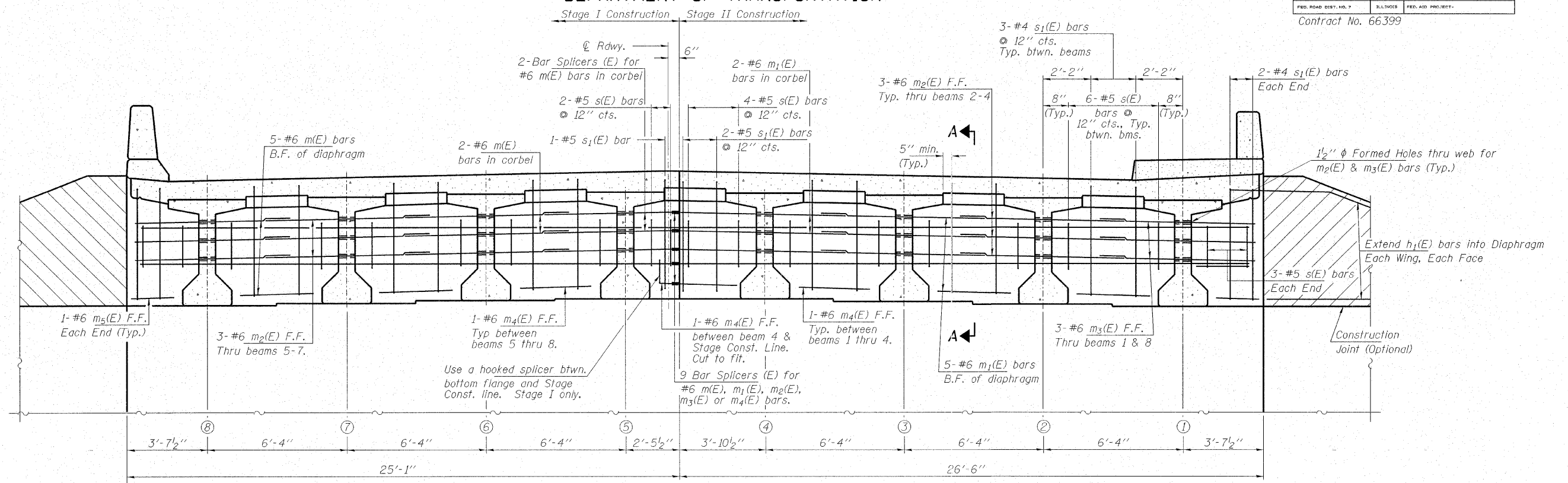


STATE OF ILLINOIS
DEPARTMENT OF TRANSPORTATION

ROUTE NO.	SECTION	COUNTY	DATE	SHEET	SHEET NO. 16 25 SHEETS
FAU 2503	(35) BR-2	KENDALL	129	40	
FED. ROAD DIST. NO. 7	ILL. ROAD	FED. AID PROJECT	Contract No. 66399		

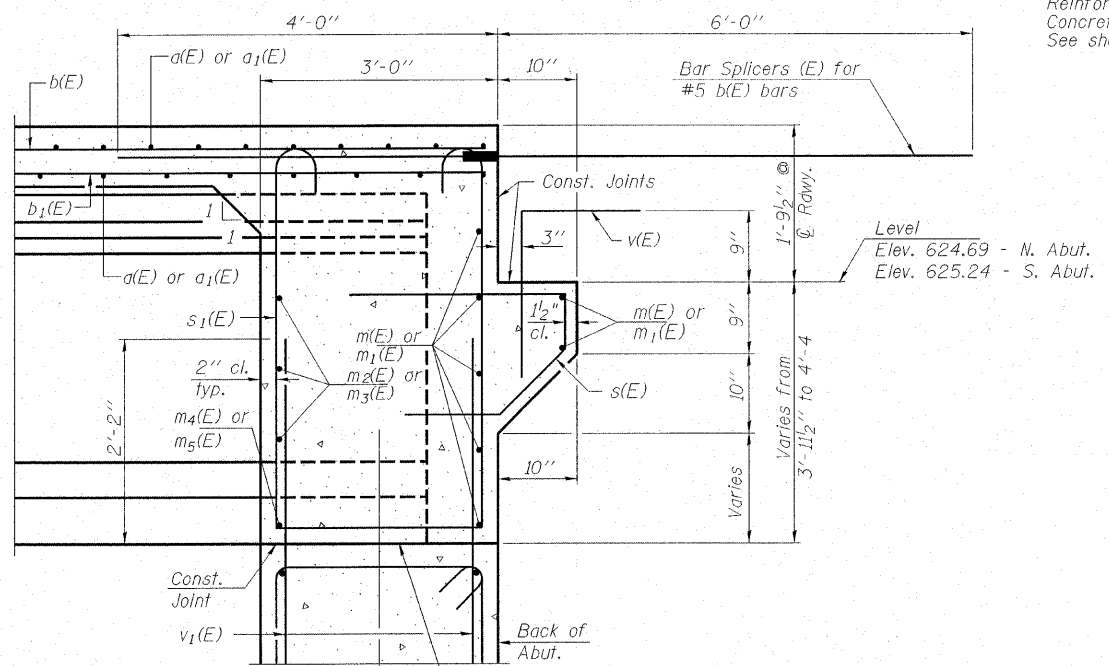


DIAPHRAGM AT ABUTMENTS

F.F. - Front Face
B.F. - Back Face
North Abutment Shown
South Abutment Mirror Image

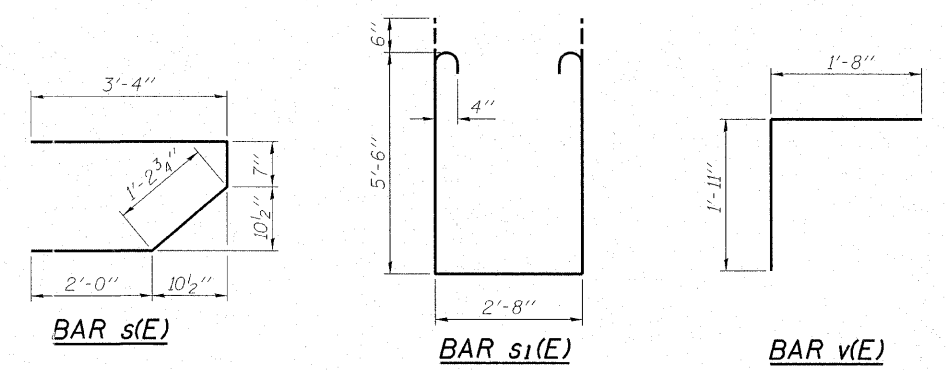
Notes:
Reinforcement bars in diaphragms are billed with superstructure on sheet 14 of 25.
Concrete in diaphragms is included with "Concrete Superstructure" on sheet 14 of 25.
See sheet 18 of 25 for holes thru web for m₂(E) and m₃(E) bars.

MIN. BAR LAPS
#6 bars = 2'-0"



Beam ends shall be set on an initial 1/2" min. grout (2:1 sand and portland cement, very dry mix) to provide full bearing. Any excess grout squeezed out from under the beam shall be removed. Cost included with Concrete Structures.

SECTION A-A



<p>HAMPTON, LENZINI & RENWICK, INC. CIVIL & STRUCTURAL ENGINEERS LAND SURVEYORS</p> <p>3085 STEVENSON DRIVE, SUITE 201 SPRINGFIELD, ILLINOIS 62703 (217) 546-3400</p>		<p>DIAPHRAGM DETAILS</p> <p>IL 25 OVER WAUBONSEE CREEK F.A.U. ROUTE 2503 / SECTION (35) BR-2 KENDALL COUNTY STATION 12+91.00 STRUCTURE NO. 047-0062</p>
<p>PROJECT NUMBER: 12-06-0029-1 DESIGNED: P.S.L.</p>	<p>DATE: 01/14/08 CHECKED: M.D.C. DRAWN: D.A.B.</p>	