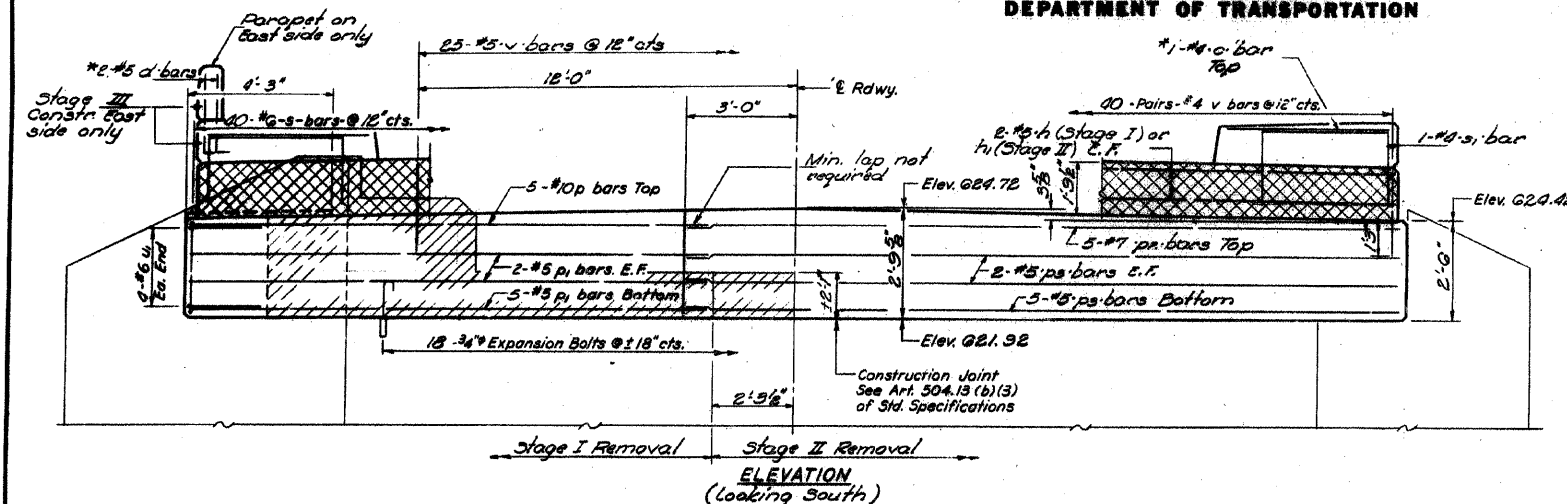


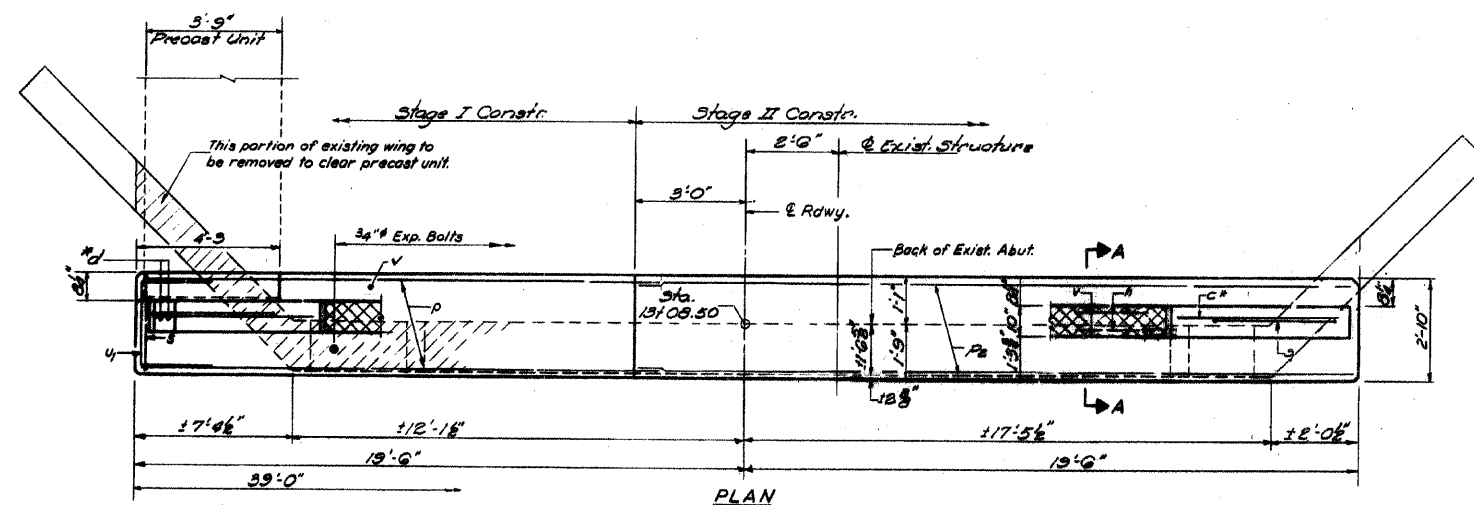
ROUTE NO.	SECTION	COUNTY	SHEET NO.	SHEET
FAU 2503	(35)BR-2	KENDALL	129	58
FED. ROAD DIST. NO.	5	B.L. SHEET	FED. AID PROJECT	

STATE OF ILLINOIS  
DEPARTMENT OF TRANSPORTATION

PROJECT NO.	SECTION	COUNTY	SHEET NO.	SHEETS
FAU 2503	(35)BR-2	KENDALL	40	23
FED. ROAD DIST. NO. 5	B.L. SHEET	FED. AID PROJECT		



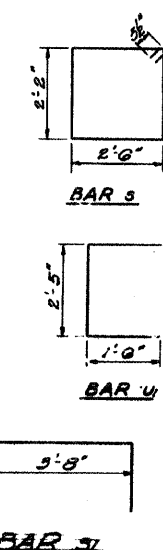
\*Included with quantities on sheet #2.



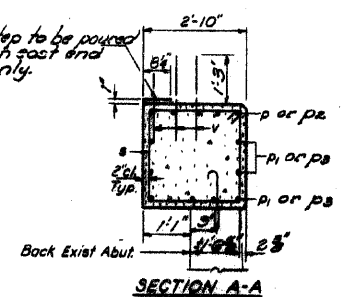
NOTES:  
Hatched area indicates Concrete Removal. Reinforcement extending into removed area shall be cleaned and incorporated into the new construction.  
Cross hatched area shall be poured after beams are in place. Class X Concrete filled with superstructure.  
Expansion bolts shall be anchored in sound concrete. All edges shall have standard 3/4\"/>

**BILL OF MATERIAL**

Bar	No.	Size	Length	Shape
h	4	#5	17'-0"	—
h1	4	#5	22'-5"	—
p	5	#10	17'-0"	—
DI	9	#5	17'-0"	—
DE	5	#7	22'-0"	—
PS	9	#5	22'-0"	—
s	20	#8	18'-3"	□
SI	2	#4	7'-2"	—
u	8	#6	3'-5"	—
v	105	#4	2'-3"	—
Expansion Bolts	18	3/4"	18	—
Concrete Removal	On Site	5-5	—	—
Class X Concrete	On Site	22-3	—	—
Reinforcement Bars	Lbs.	2010	—	—



Checked: *[Signature]*  
 Examined: *[Signature]*  
 Approved: *[Signature]*  
 Director of Highways



**SOUTH ABUTMENT**  
 T&E 2-10-75  
 T&E 2-10-75  
 T&E 2-10-75

**HAMPTON, LENZINI & RENWICK, INC.**  
 CIVIL & STRUCTURAL ENGINEERS  
 3085 STEVENSON DRIVE, SUITE 201  
 SPRINGFIELD, ILLINOIS 62703  
 (217) 546-3400  
 ELGIN • SPRINGFIELD  
 PROJECT NUMBER: 12-06-0029-1 DATE: 12/13/07  
 DESIGNED: CHECKED: DRAWN:

**EXISTING BRIDGE PLANS**  
 SECTION (35) BR-2  
 IL 25 OVER WAUBONSEE CREEK  
 KENDALL COUNTY