

F.A. RTE.	SECTION	COUNTY	TOTAL SHEETS	SHEET NO.
796	(104B)	KANKAKEE	12	1
FED. ROAD DIST. NO.	ILLINOIS	CONTRACT NO. 66759		

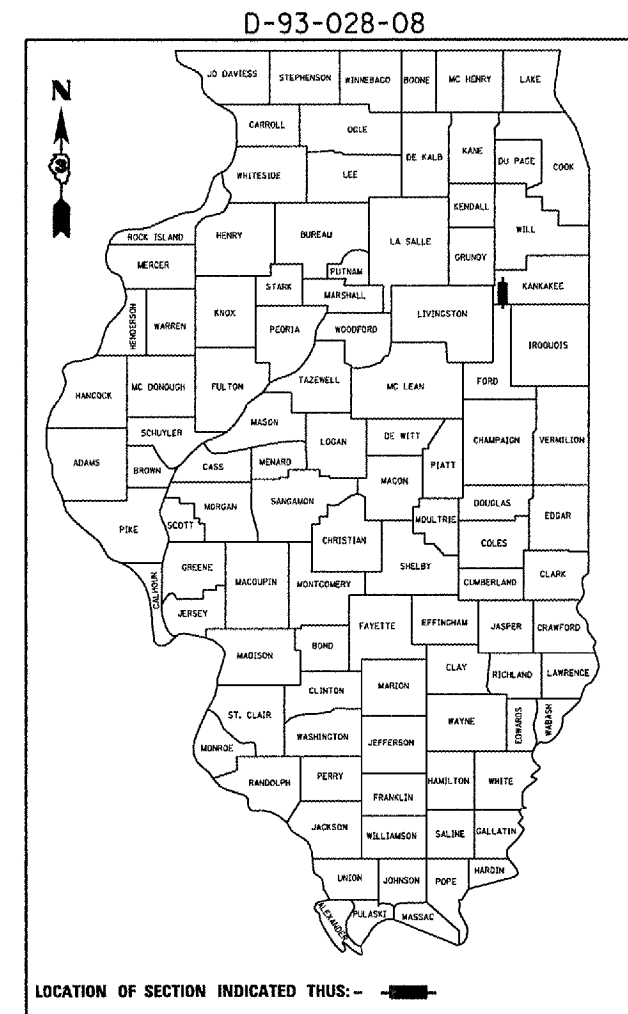
**INDEX OF SHEETS**

1. COVER SHEET
2. GENERAL NOTES
3. SUMMARY OF QUANTITIES
4. TYPICAL SECTION
5. STAGING DETAILS
6. EXISTING PLAN
7. BORING LOG
8. CONCRETE REMOVAL
9. CONCRETE STRUCTURE
10. WATERPROOFING DETAILS
- 11 - 12. EXISTING PLANS-FOR INFORMATION ONLY

**STANDARDS**

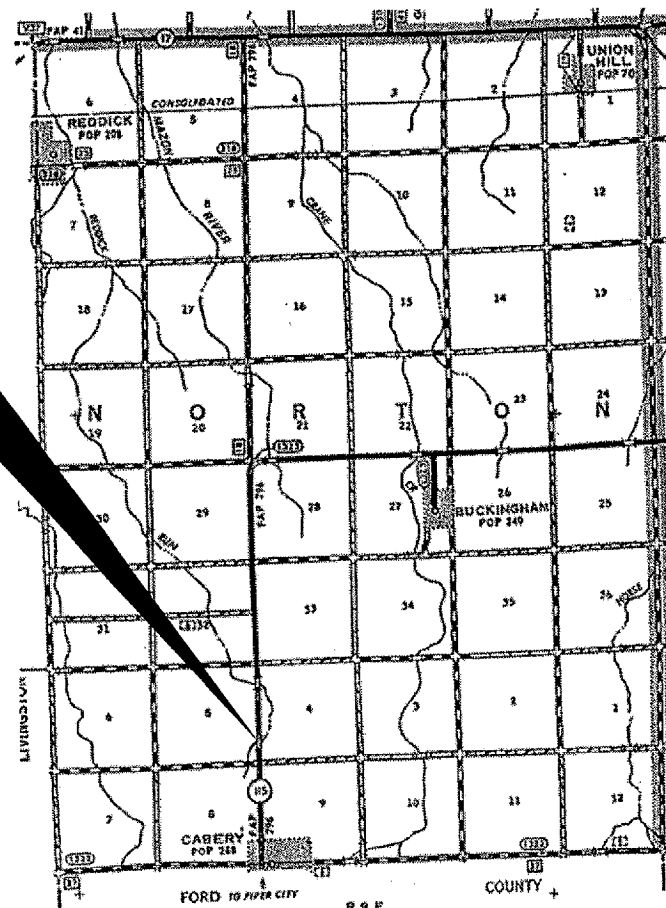
- |           |                                                                            |
|-----------|----------------------------------------------------------------------------|
| 000001-05 | STANDARD SYMBOLS, ABBREVIATIONS AND PATTERNS                               |
| 001001-01 | AREAS OF REINFORCEMENT BARS                                                |
| 001006    | DECIMAL OF AN INCH AND OF A FOOT                                           |
| 630001-07 | STEEL PLATE BEAM GUARDRAIL                                                 |
| 630101-07 | GUARDRAIL MOUNTED ON EXISTING CULVERTS                                     |
| 635011-01 | REFLECTOR MARKER AND MOUNTING DETAILS                                      |
| 701001-01 | OFF-ROAD OPERATIONS 2L, 2W, MORE THAN 4.5 m (15') AWAY                     |
| 701006-02 | OFF-ROAD OPERATIONS 2L, 2W, 4.5 m (15') TO 600 mm (24") FROM PAVEMENT EDGE |
| 701201-02 | LANE CLOSURE, 2L, 2W, DAY ONLY, FOR SPEEDS P 45 MPH                        |
| 701301-02 | LANE CLOSURE, 2L, 2W, SHORT TIME OPERATIONS                                |
| 701316-03 | LANE CLOSURE, 2L, 2W, BRIDGE REPAIR, FOR SPEEDS P 45 MPH                   |
| 701901    | TRAFFIC CONTROL DEVICES                                                    |

**STATE OF ILLINOIS**  
**DEPARTMENT OF TRANSPORTATION**  
**DIVISION OF HIGHWAYS**  
**PROPOSED**  
**HIGHWAY PLANS**  
**FAP ROUTE 796 (IL 115)**  
**SECTION (104B)I**  
**KANKAKEE COUNTY**  
**C-93-049-08**  
**BRIDGE REPAIR**



**FUNCTIONAL CLASSIFICATION**  
 RURAL - MINOR ARTERIAL  
 F.A.P. ROUTE 796 (IL 115)  
 2005 ADT = 500  
 P.V = 84.0%      M.U. = 6.0%      S.U. = 10.0%

**PROJECT LOCATION**  
 S.N. 046-0066  
 0.9 MILES NORTH OF CABERY  
 STA. 986+00



**LOCATION MAP**  
 NOT TO SCALE  
**POINT LOCATION**

MICROFILMED \_\_\_\_\_  
 REEL NUMBER \_\_\_\_\_  
 AWARDED \_\_\_\_\_  
 RESIDENT ENGINEER \_\_\_\_\_  
 AS BUILT CHANGES WERE MADE  
 ON THE FOLLOWING SHEETS \_\_\_\_\_

**J.U.L.I.E.**  
**JOINT UTILITY LOCATION INFORMATION FOR EXCAVATION**  
 1-800-892-0123

**DISTRICT 3 NO. (815) 434-6131**  
**PROJECT ENGINEER: JOE KANNEL**  
**UNIT CHIEF: RON WOODSHANK**

**CONTRACT NO. 66759**

**STATE OF ILLINOIS**  
**DEPARTMENT OF TRANSPORTATION**  
**DIVISION OF HIGHWAYS**  
 SUBMITTED 2/15 20 08  
*George Ryznar*  
 DEPUTY DIRECTOR OF HIGHWAYS, REGION ENGINEER  
March 21, 20 08  
*Eric E. Hamm*  
 ENGINEER OF DESIGN AND ENVIRONMENT  
March 21, 20 08  
*Christine M. Reed*  
 DIRECTOR OF HIGHWAYS, CHIEF ENGINEER

**PRINTED BY THE AUTHORITY**  
**OF THE STATE OF ILLINOIS**