

F.A. RTE.	SECTION	COUNTY	TOTAL SHEETS	SHEET NO.
796	(104B)	KANKAKEE	12	1
FED. ROAD DIST. NO.	ILLINOIS	CONTRACT NO. 66759		

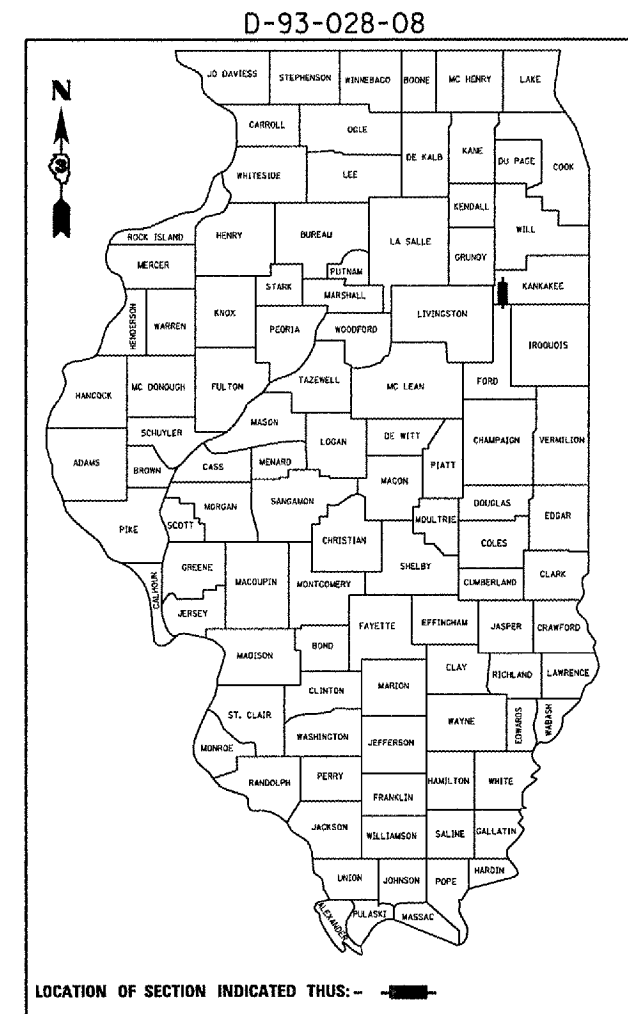
INDEX OF SHEETS

1. COVER SHEET
2. GENERAL NOTES
3. SUMMARY OF QUANTITIES
4. TYPICAL SECTION
5. STAGING DETAILS
6. EXISTING PLAN
7. BORING LOG
8. CONCRETE REMOVAL
9. CONCRETE STRUCTURE
10. WATERPROOFING DETAILS
- 11 - 12. EXISTING PLANS-FOR INFORMATION ONLY

STANDARDS

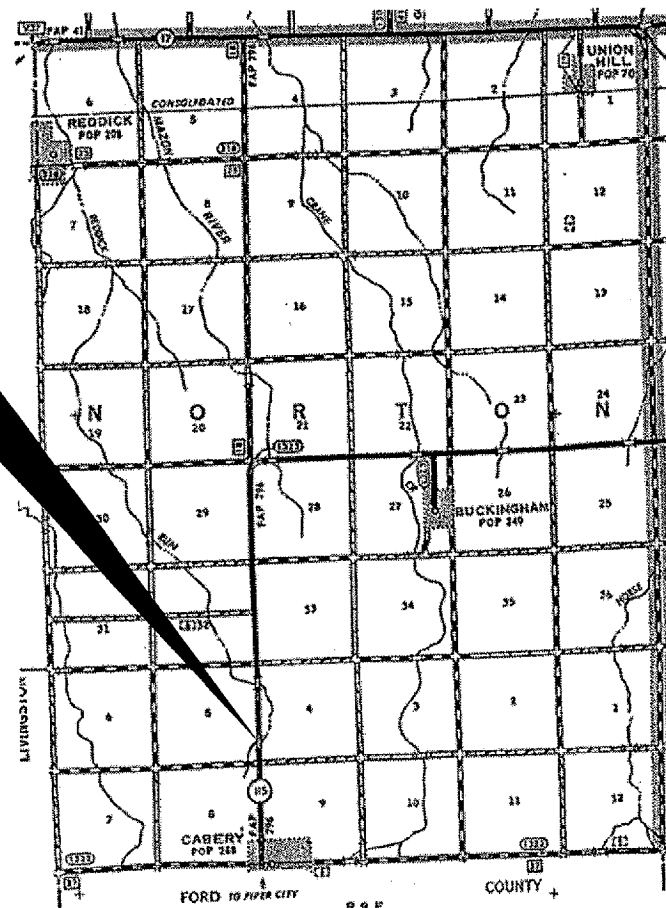
- | | |
|-----------|--|
| 000001-05 | STANDARD SYMBOLS, ABBREVIATIONS AND PATTERNS |
| 001001-01 | AREAS OF REINFORCEMENT BARS |
| 001006 | DECIMAL OF AN INCH AND OF A FOOT |
| 630001-07 | STEEL PLATE BEAM GUARDRAIL |
| 630101-07 | GUARDRAIL MOUNTED ON EXISTING CULVERTS |
| 635011-01 | REFLECTOR MARKER AND MOUNTING DETAILS |
| 701001-01 | OFF-ROAD OPERATIONS 2L, 2W, MORE THAN 4.5 m (15') AWAY |
| 701006-02 | OFF-ROAD OPERATIONS 2L, 2W, 4.5 m (15') TO 600 mm (24") FROM PAVEMENT EDGE |
| 701201-02 | LANE CLOSURE, 2L, 2W, DAY ONLY, FOR SPEEDS P 45 MPH |
| 701301-02 | LANE CLOSURE, 2L, 2W, SHORT TIME OPERATIONS |
| 701316-03 | LANE CLOSURE, 2L, 2W, BRIDGE REPAIR, FOR SPEEDS P 45 MPH |
| 701901 | TRAFFIC CONTROL DEVICES |

STATE OF ILLINOIS
DEPARTMENT OF TRANSPORTATION
DIVISION OF HIGHWAYS
PROPOSED
HIGHWAY PLANS
FAP ROUTE 796 (IL 115)
SECTION (104B)I
KANKAKEE COUNTY
C-93-049-08
BRIDGE REPAIR



FUNCTIONAL CLASSIFICATION
 RURAL - MINOR ARTERIAL
 F.A.P. ROUTE 796 (IL 115)
 2005 ADT = 500
 P.V = 84.0% M.U. = 6.0% S.U. = 10.0%

PROJECT LOCATION
 S.N. 046-0066
 0.9 MILES NORTH OF CABERY
 STA. 986+00



LOCATION MAP
 NOT TO SCALE
POINT LOCATION

MICROFILMED _____
 REEL NUMBER _____
 AWARDED _____
 RESIDENT ENGINEER _____
 AS BUILT CHANGES WERE MADE
 ON THE FOLLOWING SHEETS _____

J.U.L.I.E.
JOINT UTILITY LOCATION INFORMATION FOR EXCAVATION
 1-800-892-0123

DISTRICT 3 NO. (815) 434-6131
PROJECT ENGINEER: JOE KANNEL
UNIT CHIEF: RON WOODSHANK

CONTRACT NO. 66759

STATE OF ILLINOIS
DEPARTMENT OF TRANSPORTATION
DIVISION OF HIGHWAYS
 SUBMITTED 2/15 20 08
George Ryznar
 DEPUTY DIRECTOR OF HIGHWAYS, REGION ENGINEER
March 21, 20 08
Eric E. Hamm
 ENGINEER OF DESIGN AND ENVIRONMENT
March 21, 20 08
Christine M. Reed
 DIRECTOR OF HIGHWAYS, CHIEF ENGINEER

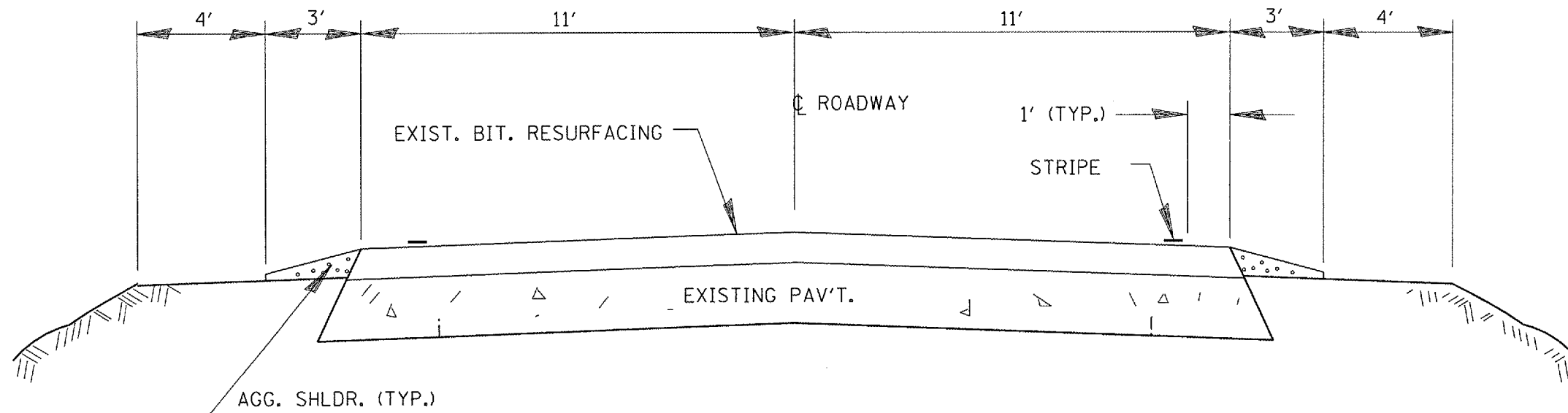
PRINTED BY THE AUTHORITY
OF THE STATE OF ILLINOIS

SUMMARY OF QUANTITIES

CONSTRUCTION CODE TYPE: SFTY-2A

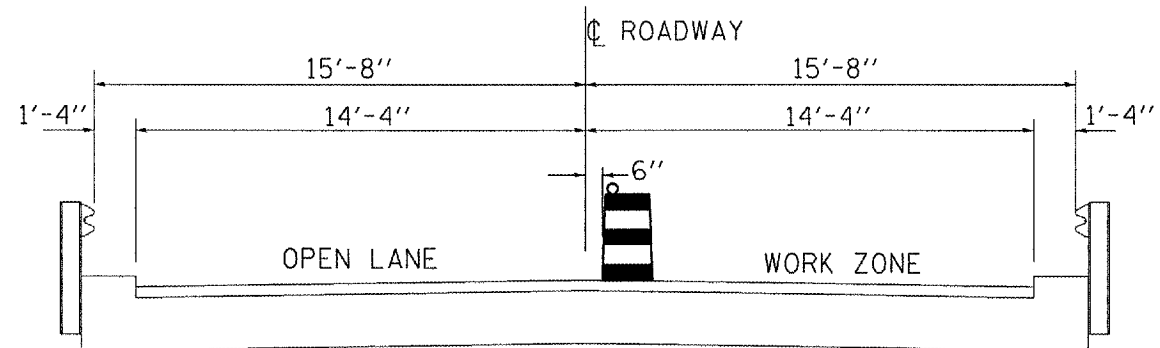
CODE NO.	ITEM	UNIT	RURAL 100% STATE TOTAL QUANTITY
20400800	FURNISHED EXCAVATION	CU YD	30
25100635	HEAVY DUTY EROSION CONTROL BLANKET	SQ YD	10
50102400	CONCRETE REMOVAL	CU YD	2.4
50200100	STRUCTURE EXCAVATION	CU YD	30
50300225	CONCRETE STRUCTURES	CU YD	2.4
50800205	REINFORCEMENT BARS, EPOXY COATED	POUND	160
* 63000000	STEEL PLATE BEAM GUARD RAIL, TYPE A	FOOT	13
* 63000005	STEEL PLATE BEAM GUARD RAIL, TYPE B	FOOT	13
* 63000025	STEEL PLATE BEAM GUARD RAIL, ATTACHED TO STRUCTURES	FOOT	13
63200310	GUARDRAIL REMOVAL	FOOT	39
67100100	MOBILIZATION	L SUM	1
70100100	TRAFFIC CONTROL AND PROTECTION, STANDARD 701316	EACH	1
70100450	TRAFFIC CONTROL AND PROTECTION, STANDARD 701201	L SUM	1
70106500	TEMPORARY BRIDGE TRAFFIC SIGNALS	EACH	1
X0322121	SHEET WATERPROOFING MEMBRANE SYSTEM	SQ YD	12
X0323988	TEMPORARY SOIL RETENTION SYSTEM	SQ FT	100

* SPECIALTY ITEM

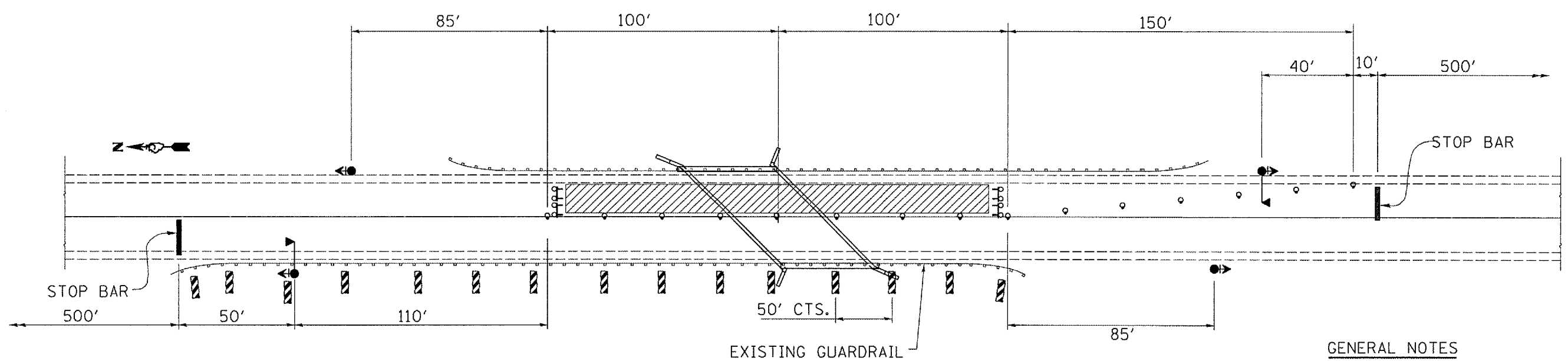
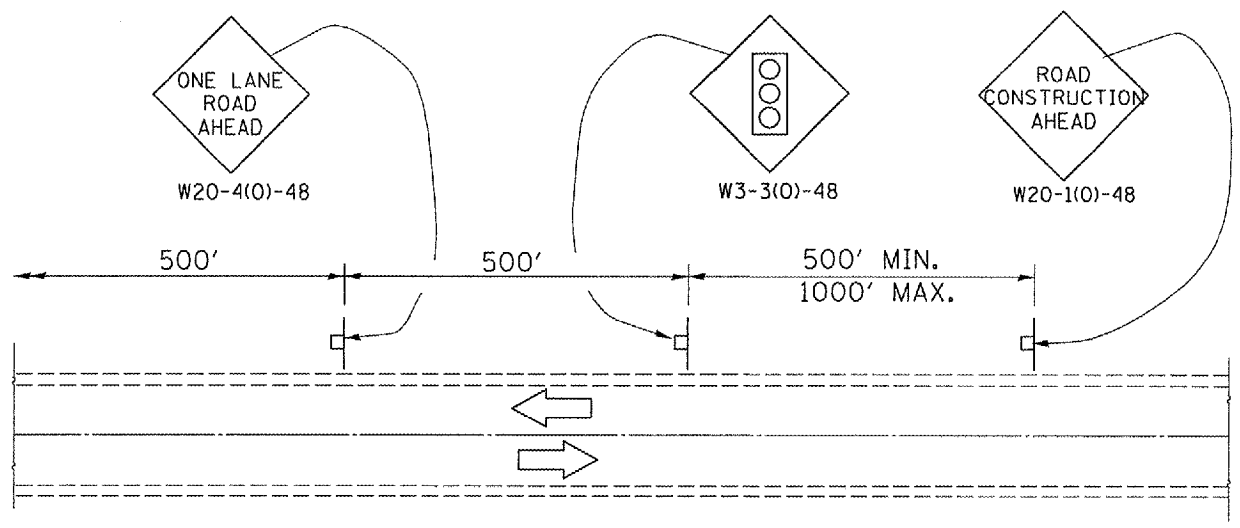


TYPICAL SECTION
 STA. 985+00 TO STA. 987+00

FILE NAME =	USER NAME = vaninger jr	DESIGNED -	REVISED -	STATE OF ILLINOIS DEPARTMENT OF TRANSPORTATION	TYPICAL SECTION	F.A.P. RTE.	SECTION	COUNTY	TOTAL SHEETS	SHEET NO.
c:\projects\mchd07\0460056\0450056.dgn		DRAWN -	REVISED -			796	(104B)	KANKAKEE	12	4
PLOT SCALE = 1/8" = 1' / IN.		CHECKED -	REVISED -			CONTRACT NO. 66759				
PLOT DATE = Feb 11, 2008 - 09:24:13 AM		DATE -	REVISED -			SCALE:	SHEET NO. 4 OF 5 SHEETS	STA.	TO STA.	FED. ROAD DIST. NO.



CROSS SECTION
LOOKING NORTH



GENERAL NOTES

THIS DETAIL SHALL BE USED WHERE, AT ANY TIME, ANY VEHICLE, EQUIPMENT, WORKERS, OR THEIR ACTIVITIES WILL ENCR OACH ON ONE LANE OF A 2L, 2W HIGHWAY OR BRIDGE. TRAFFIC SIGNALS SHALL BE REQUIRED. THIS DETAIL SHALL BE USED IN CONJUNCTION WITH TRAFFIC CONTROL AND PROTECTION STANDARD 701316.

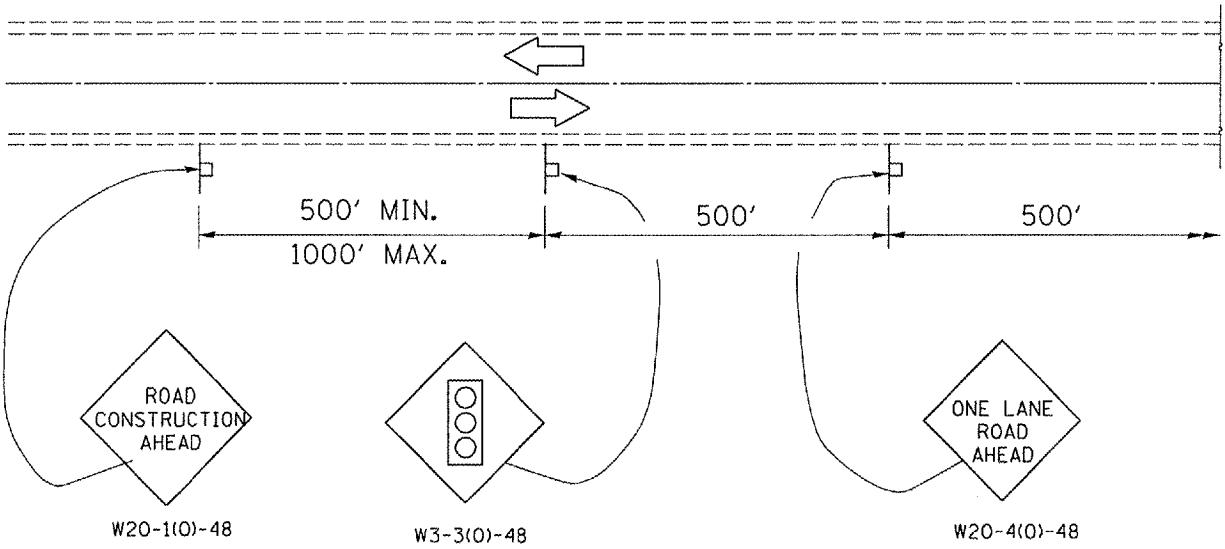
WHEN TRAFFIC SIGNALS ARE NOT IN OPERATION, FLAGGERS SHALL BE USED AND TRAFFIC CONTROL SHALL CONFORM TO TRAFFIC CONTROL AND PROTECTION STANDARDS 701201 OR 701206.

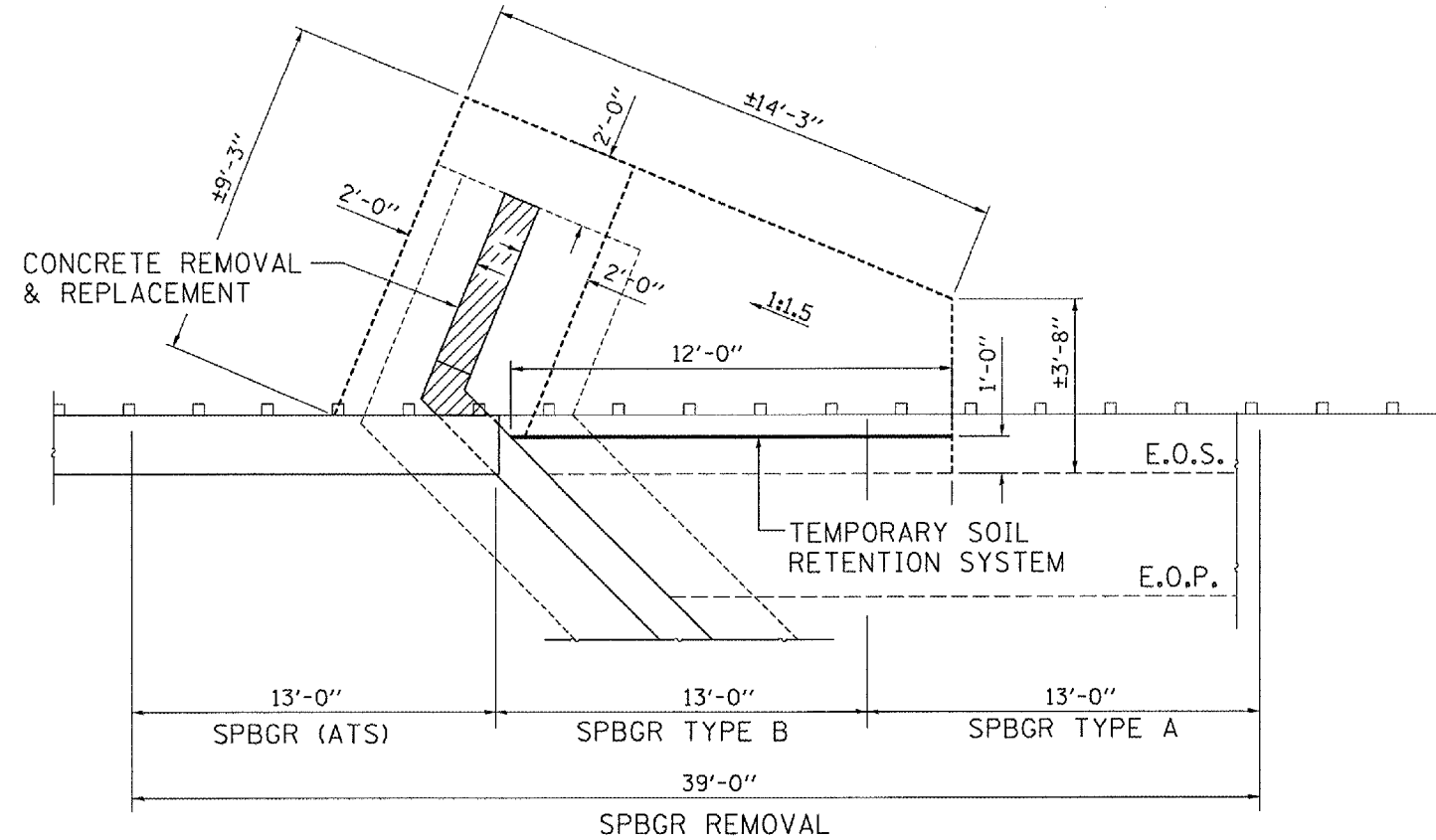
BI-DIRECTIONAL LIGHTS SHALL BE USED AT NIGHT ALONG THE CENTERLINE WHERE THE WORK AREA IS SEPERATED FROM THE TRAVEL LANE USING DRUMS. MONODIRECTIONAL LIGHTS SHALL BE USED AT NIGHT ON ALL OTHER DRUMS.

EXISTING OR TEMPORARY PAVEMENT MARKING SHALL BE ON BOTH SIDES OF THE OPEN LANE FROM STOP BAR TO STOP BAR.

SYMBOLS

- Work area
- Sign
- Type III barricade with steady burning light
- Drum with steady burning light
- Traffic signal with back plate
- Double vertical panel
- Microwave Detector

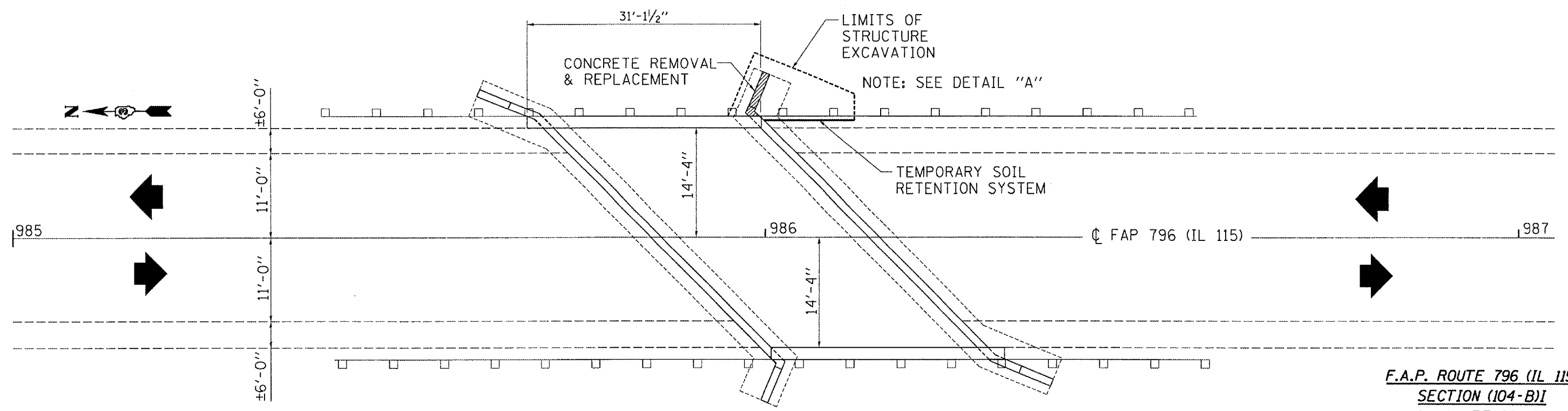




DETAIL "A"

TOTAL BILL OF MATERIAL

TEMPORARY SOIL RETENTION SYSTEM	SQ. FT.	100
STRUCTURE EXCAVATION	CU. YD.	30
CONCRETE REMOVAL	Cu. Yd.	2.4
REINFORCEMENT BARS EPOXY COATED	POUNDS	160
CONCRETE BOX CULVERT	Cu. Yd.	2.4
SHEET WATERPROOFING MEMBRANE SYSTEM	SQ. YD.	12
FURNISHED EXCAVATION	CU. YD.	30



PLAN

**F.A.P. ROUTE 796 (IL 115)
SECTION (104-B)
KANKAKEE COUNTY
STA. 986+00
S.N. 046-0066**



Illinois Department of Transportation

Division of Highways
Illinois Department of Transportation

SOIL BORING LOG

Page 1 of 1

Date 12/19/07

ROUTE FAP 796 (IL 115) DESCRIPTION IL 115 over Reddick Creek LOGGED BY Larry Myers

SECTION (104-B) LOCATION SW 14, SEC. 4, TWP. 29N, RNG. 09E

COUNTY Kankakee DRILLING METHOD Hollow Stem Auger HAMMER TYPE CME Automatic

STRUCT. NO. 046-0066
Station 986+00

BORING NO. #1: SE Wing
Station 986+40
Offset 12.00ft Lt.

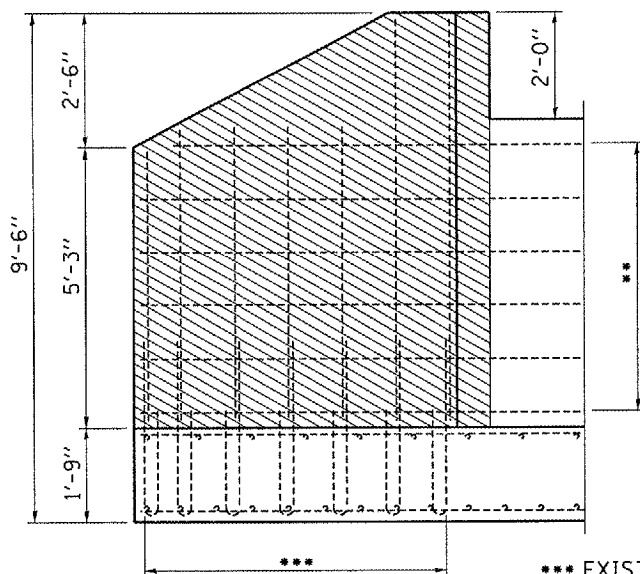
Ground Surface Elev. 99.80 ft

D E P T H	B L O W S	U C S Qu	M O I S T	Surface Water Elev.	D E P T H	B L O W S	U C S Qu	M O I S T
				ft				
				92.78				

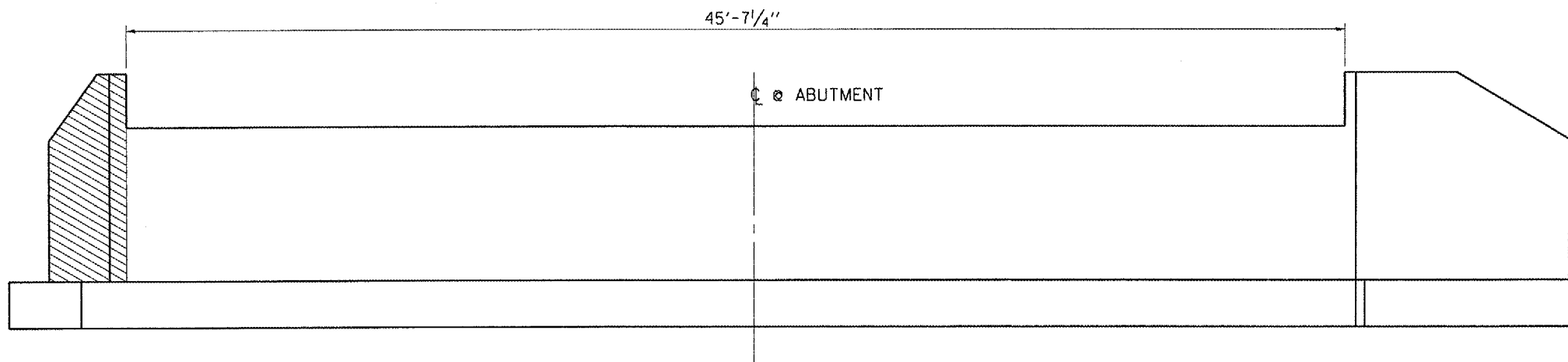
Augered, Bituminous Pavement and black, Silty Clay Loam-topsoil, fill * CL elevation = 100'				Very stiff, gray, Silty Clay Loam Till (continued)	4			
97.30					5	3.6	16.6	
Very stiff, black, Silty Clay Loam-topsoil, fill with organics	3				7	S		
4	4	3.0	30.2		4			
Water encountered at 7'	4	P			5	3.6	17.0	
-5					7	S		
2					-25			
2	2	2.5	23.9		5	3.7	18.0	
3	3	P			7	S		
92.80								
Soft, brown gray, layered, Silt, Silty Clay and Silty Loam	4				5			
1	1	0.5	27.5		6	3.7	19.2	
1	1	P			7	S		
90.30								
Very stiff, brown, Silty Clay Loam Till					-30			
-10	3				4			
3	3	2.4	20.0		6	3.6	19.1	
4	4	B			7	B		
87.30								
Very stiff, gray, Silty Clay Loam Till	4							
6	6	3.6	15.1					
10	10	S						
-15					-35			
4					3			
9	9	3.8	14.2		5	3.5	20.5	
11	11	S			7	B		
63.30								
End of Boring								
	5							
7	7	3.6	15.5					
7	7	S						
-20					-40			

The Unconfined Compressive Strength (UCS) Failure Mode is indicated by (B-Bulge, S-Shear, P-Penetrometer)
The SPT (N value) is the sum of the last two blow values in each sampling zone (AASHTO T206)
BBS, from 137 (Rev. 8-99)

** EXISTING LONGITUDINAL REINFORCEMENT SHALL BE CUT TO EXTEND INTO REMOVAL AREA TO PROVIDE REQUIRED LAP DISTANCE WITH NEW REINFORCEMENT.
 REQUIRED LAP DISTANCE = 2'-2" MIN.



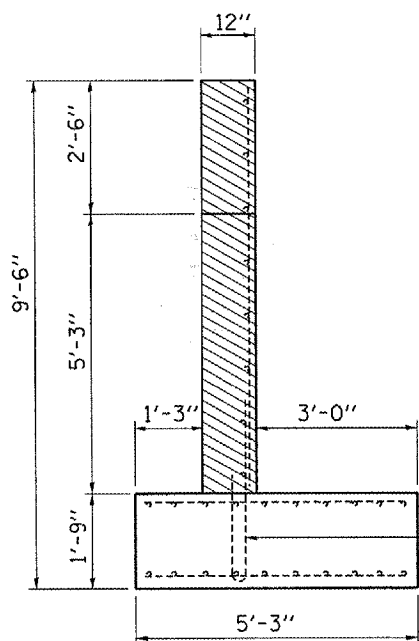
WING ELEVATION



ELEVATION

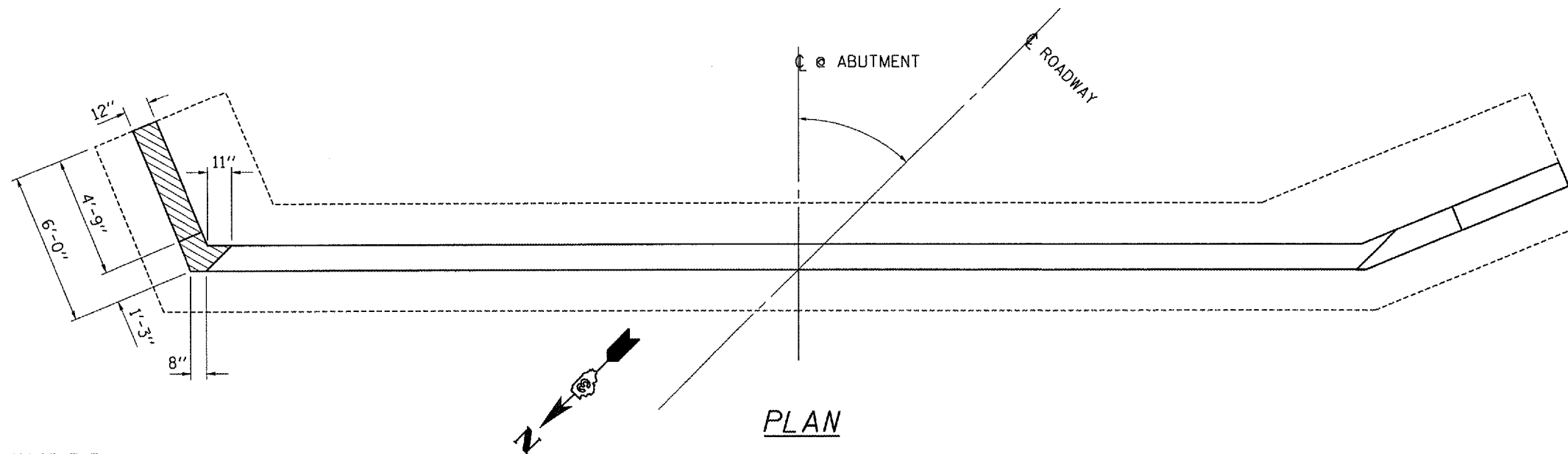
*** EXISTING VERTICAL REINFORCEMENT EXTENDING INTO REMOVAL AREA SHALL BE CUT OFF FLUSH WITH EXISTING CONCRETE FOOTING.

 CONCRETE REMOVAL LIMITS



END SECTION

EXISTING REINFORCEMENT TO BE CUT OFF FLUSH WITH EXISTING CONCRETE FOOTING



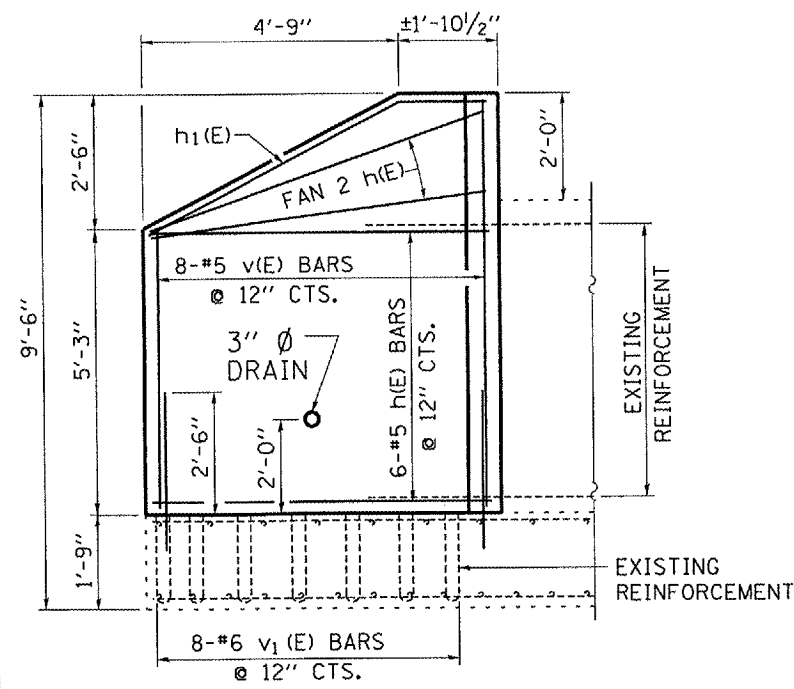
PLAN

BILL OF MATERIAL

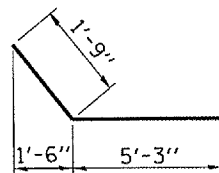
Concrete Removal Cu. Yd. 2.4

F.A.P. ROUTE 796 (IL 115)
 SECTION (104-B)
 KANKAKEE COUNTY
 STA. 986+00
 S.N. 046-0066

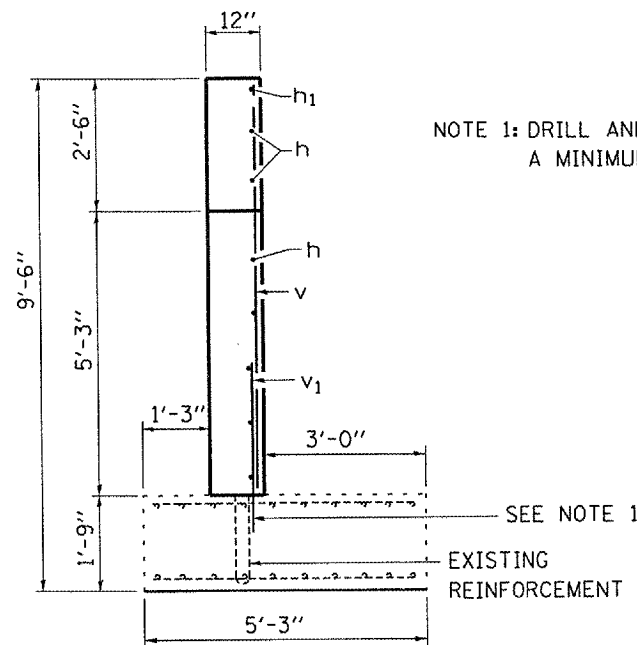
FILE NAME =	USER NAME = vaninger_jr	DESIGNED -	REVISED -	STATE OF ILLINOIS DEPARTMENT OF TRANSPORTATION	CONCRETE REMOVAL	F.A.P. RTE.	SECTION	COUNTY	TOTAL SHEETS	SHEET NO.	
c:\projects\mchd07\0460066\0450066.dgn		DRAWN -	REVISED -			796	(104B)	KANKAKEE	12	8	
PLOT SCALE = 103.4829 / IN.		CHECKED -	REVISED -			CONTRACT NO. 66759					
PLOT DATE = Feb 11, 2008 - 09:24:59 AM		DATE -	REVISED -			ILLINOIS FED. AID PROJECT					



WING ELEVATION

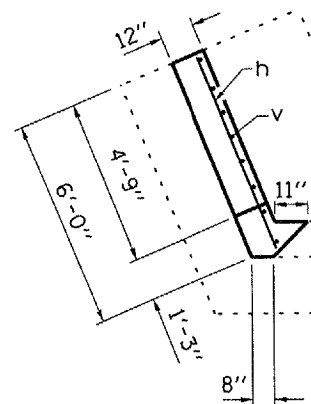


BARS h₁



END SECTION

NOTE 1: DRILL AND EPOXY GROUT v₁ BARS
A MINIMUM OF 9" INTO EXISTING FOOTING IN ACCORDANCE WITH ARTICLE
584 OF THE STANDARD SPECS.



BILL OF MATERIAL

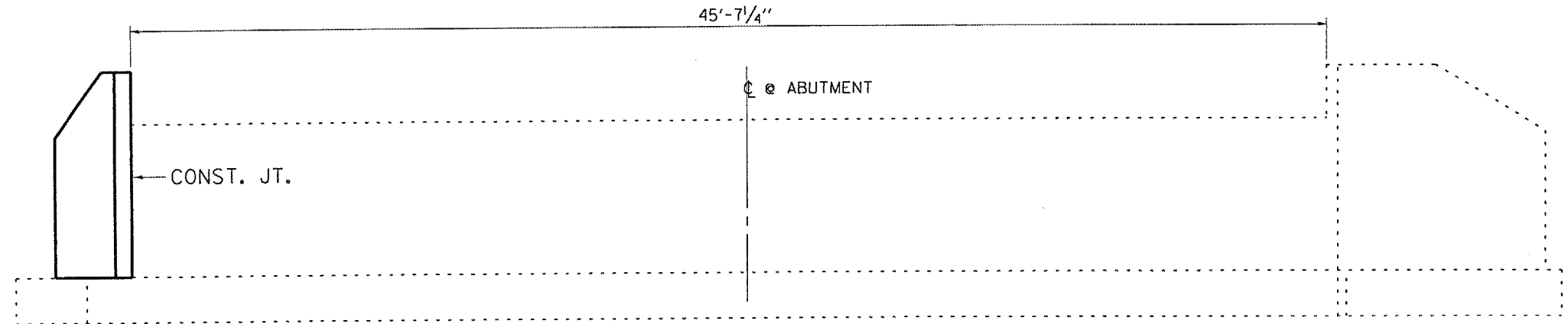
Bar	No.	Size	Length	Shape
h (E)	8	#5(E)	5'-10"	—
h ₁ (E)	1	#5(E)	7'-0"	—
v (E)	8	#5(E)	7'-6"	—
v ₁ (E)	8	#6(E)	3'-3"	—
Concrete Box Culverts			Cu. Yd.	2.4
Reinforcement Bars			Pound	160
Epoxy Coated				

GENERAL NOTES

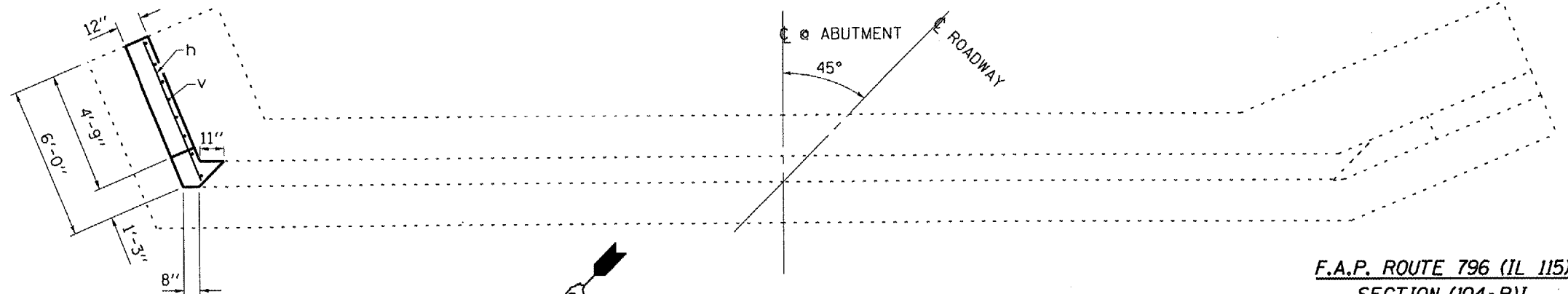
PLAN DIMENSIONS AND DETAILS RELATIVE TO EXISTING PLANS ARE SUBJECT TO ROUTINE VARIATIONS. THE CONTRACTOR SHALL FIELD VERIFY EXISTING DIMENSIONS AND DETAILS AFFECTING NEW CONSTRUCTION AND MAKE NECESSARY APPROVED ADJUSTMENTS PRIOR TO CONSTRUCTION OR ORDERING OF MATERIALS. SUCH VARIATIONS SHALL NOT BE CAUSE FOR ADDITIONAL COMPENSATION FOR A CHANGE IN THE SCOPE OF THE WORK. HOWEVER, THE CONTRACTOR WILL BE PAID FOR THE QUANTITY FURNISHED BASED UPON THE UNIT BID PRICE FOR THE WORK.

REINFORCEMENT BARS SHALL CONFORM TO THE REQUIREMENTS OF ASTM A 706 GR 60 (IL MODIFIED). SEE SPECIAL PROVISIONS.

REINFORCEMENT BARS DESIGNATED (E) SHALL BE EPOXY COATED.

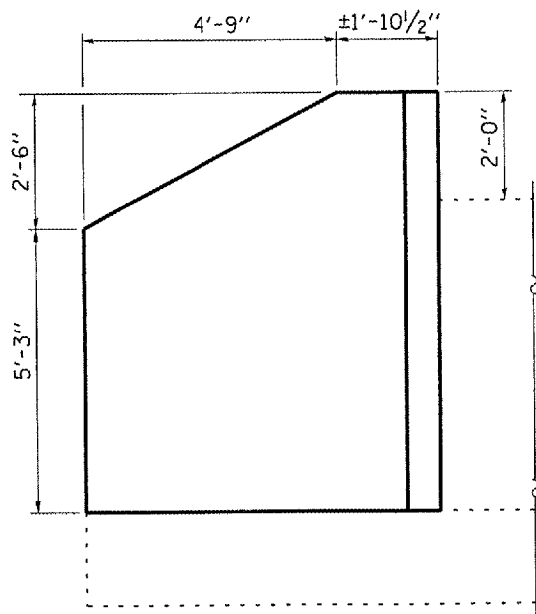


ELEVATION

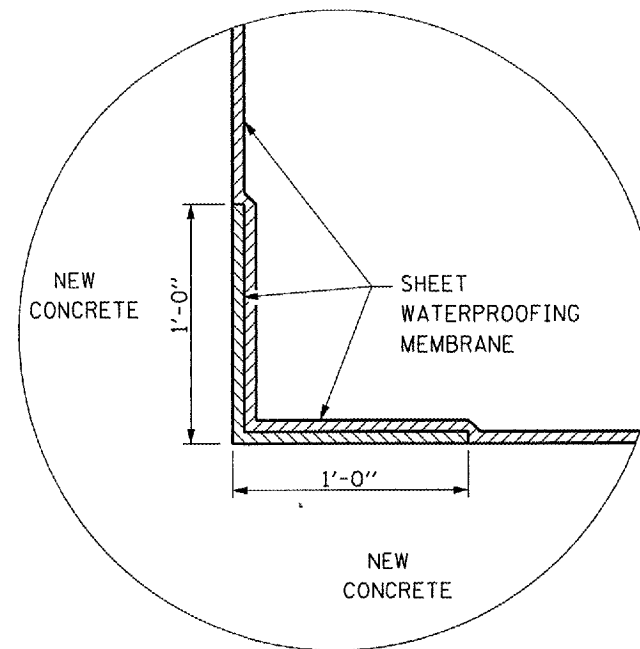


PLAN

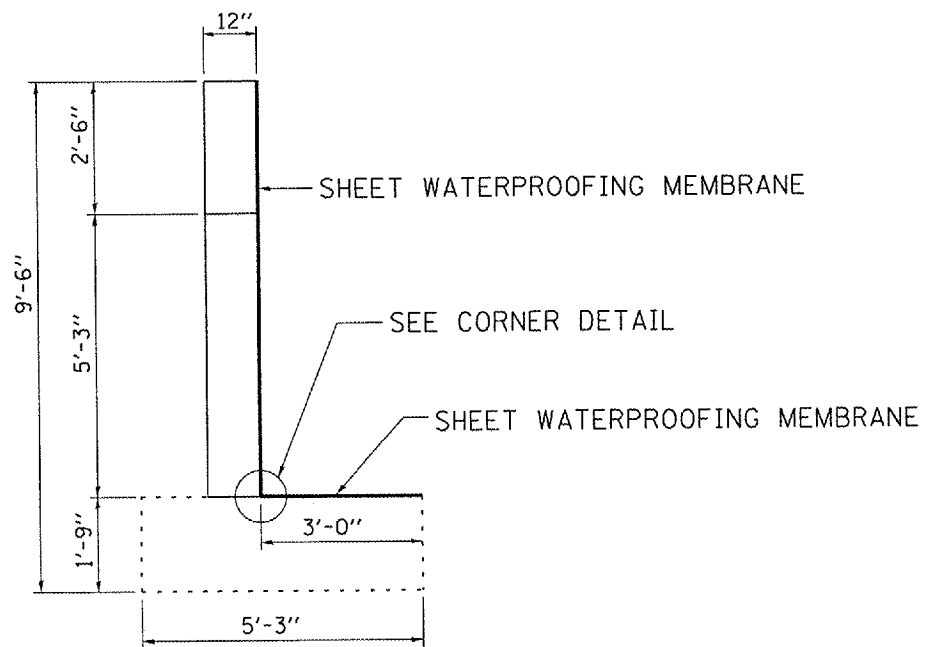
F.A.P. ROUTE 796 (IL 115)
SECTION (104-B)I
KANKAKEE COUNTY
STA. 986+00
S.N. 046-0066



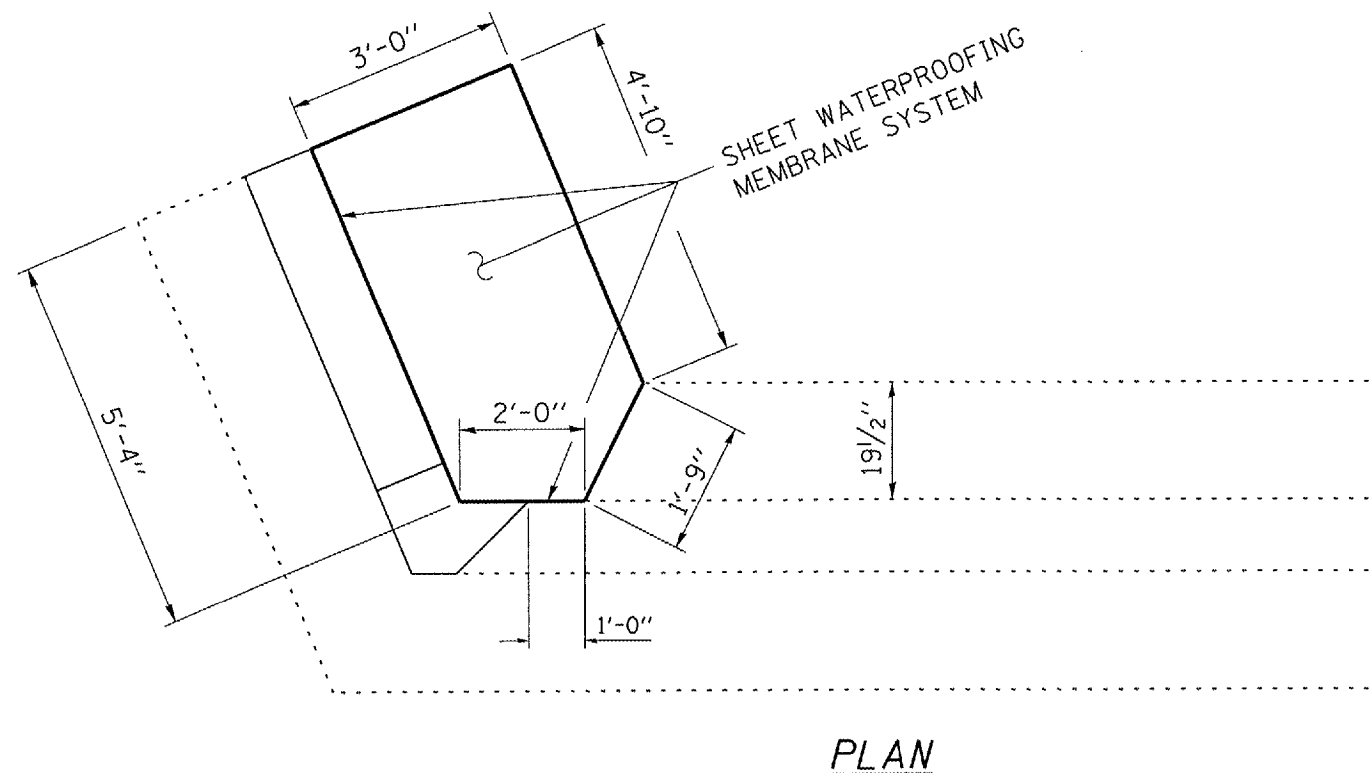
WING ELEVATION



CORNER DETAIL



END SECTION



PLAN

BILL OF MATERIAL

Sheet Waterproofing Membrane System	Sq. Yd.	12
-------------------------------------	---------	----

F.A.P. ROUTE 796 (IL 115)
SECTION (104-B)I
KANKAKEE COUNTY
STA. 986+00
S.N. 046-0066

FILE NAME =	USER NAME = varingerjr	DESIGNED -	REVISED -
c:\projects\mohd07\0460066\0450066.dgn		DRAWN -	REVISED -
	PLOT SCALE = 103.4029' / IN.	CHECKED -	REVISED -
	PLOT DATE = Feb 11, 2008 09:25:18 AM	DATE -	REVISED -

STATE OF ILLINOIS
DEPARTMENT OF TRANSPORTATION

WATERPROOFING DETAILS

SCALE: SHEET NO. 5 OF 7 SHEETS STA. TO STA.

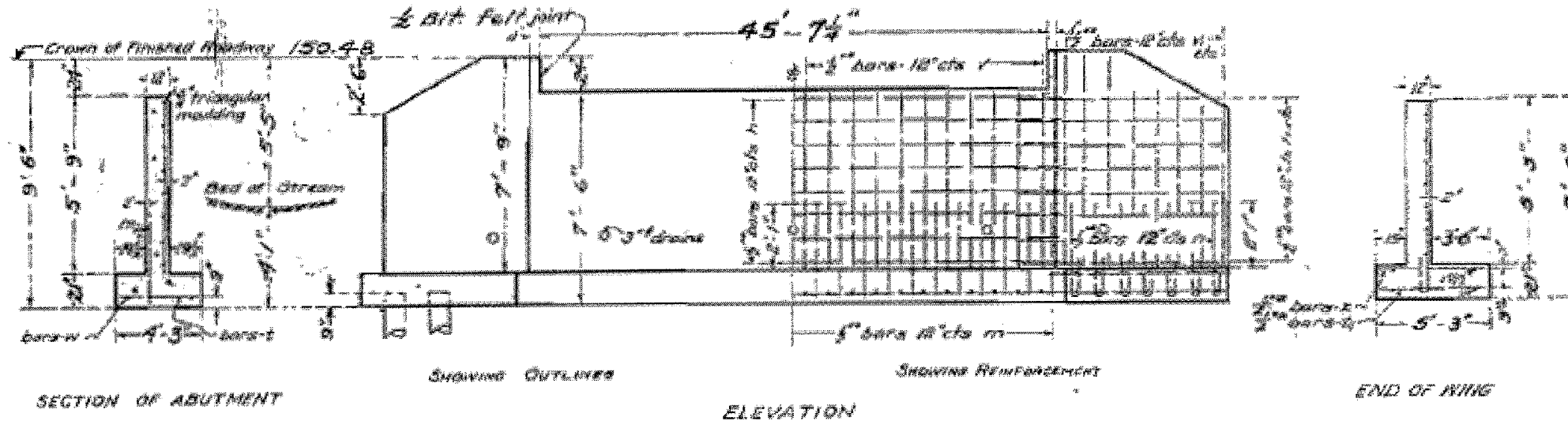
F.A.P. RTE. 796	SECTION (104B)I	COUNTY KANKAKEE	TOTAL SHEETS 12	SHEET NO. 10
FED. ROAD DIST. NO.		ILLINOIS FED. AID PROJECT		
CONTRACT NO. 66759				

Note: Existing structure, steel I beams.
 20' span, 14' roadway to be removed by
 the bridge contractor.
 B.M. #207 spk and washer in FcR
 Lt. sta. 984+97. Elev. 148.35

STATE OF ILLINOIS
 DEPARTMENT OF PUBLIC WORKS & BUILDINGS
 DIVISION OF HIGHWAYS

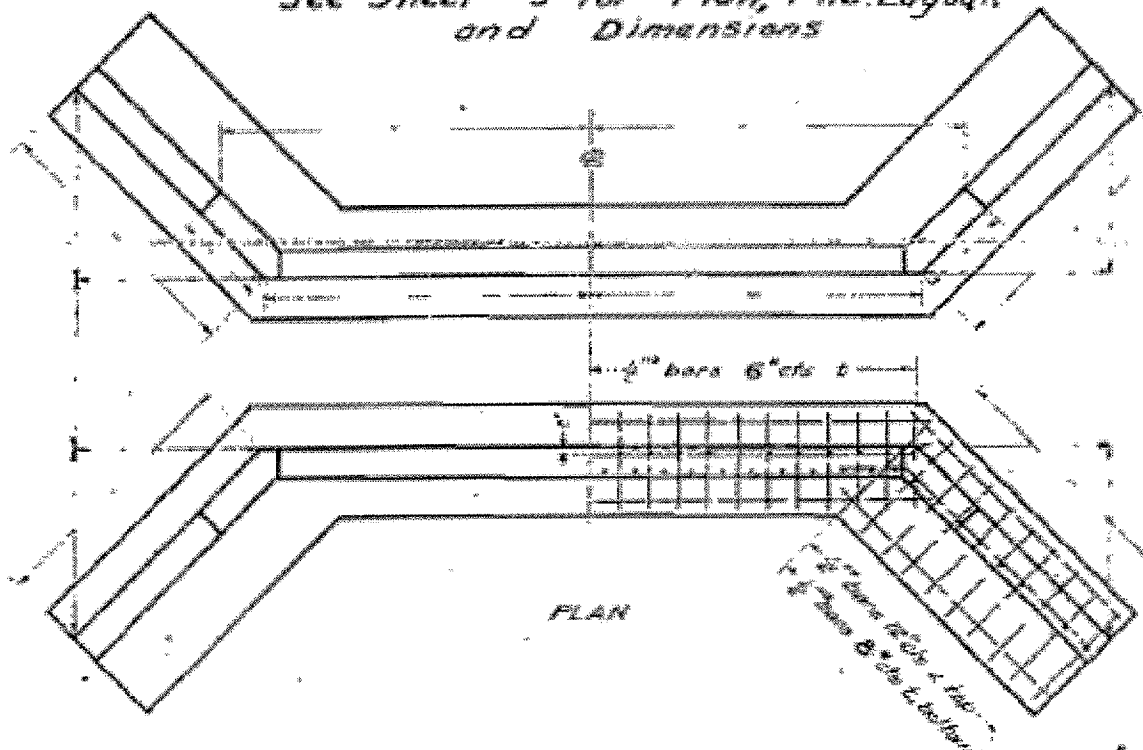
ROAD ISSUE ROUTE NO.	COUNTY	SEC.	TOTAL SHEETS	SHEET NO.	Sheet No. 2 of 3 sheets
115	FORD KANKAKEE	104B	56	32	

R.C. ABUTMENTS FOR SLAB BRIDGE
 HEIGHT OVER ALL FEET 6 INCHES



Note:
 Class A concrete shall be used
 throughout. Proportions 1:2 1/2:4
 All reinforcing steel to be securely
 wired in place before concrete
 is poured.

See Sheet #3 for Plan, Pile Layout,
 and Dimensions



BILL OF MATERIAL

Bars	No	Size	Length
v	32	7/8"	3'-6"
w	12	7/8"	7'-6"
x	16	7/8"	6'-0"
ya	8	5/8"	7'-0"
y	24	5/8"	24'-0"
z	12	5/8"	10'-6"
ba	12	5/8"	8'-0"
b	164	5/8"	4'-0"
bc	46	7/8"	3'-0"
c	32	7/8"	8'-0"
ca	8	5/8"	24'-0"
cb	8	5/8"	9'-6"
d	28	5/8"	4'-6"
da	92	5/8"	3'-0"

Reinforcing Steel Lbs 2050
 Concrete Cu Yds 614
 Piling - 10 Ton Lint 750

DESIGNED	BY	DATE
DRAWN	BY	DATE
CHECKED	BY	DATE
APPROVED	BY	DATE

Dec 16, 2005
 [Signature]
 [Signature]
 [Signature]

STATION 986+00
 S.B.I. - ROUTE 115
 SEC. 104B KANKAKEE CO.

915

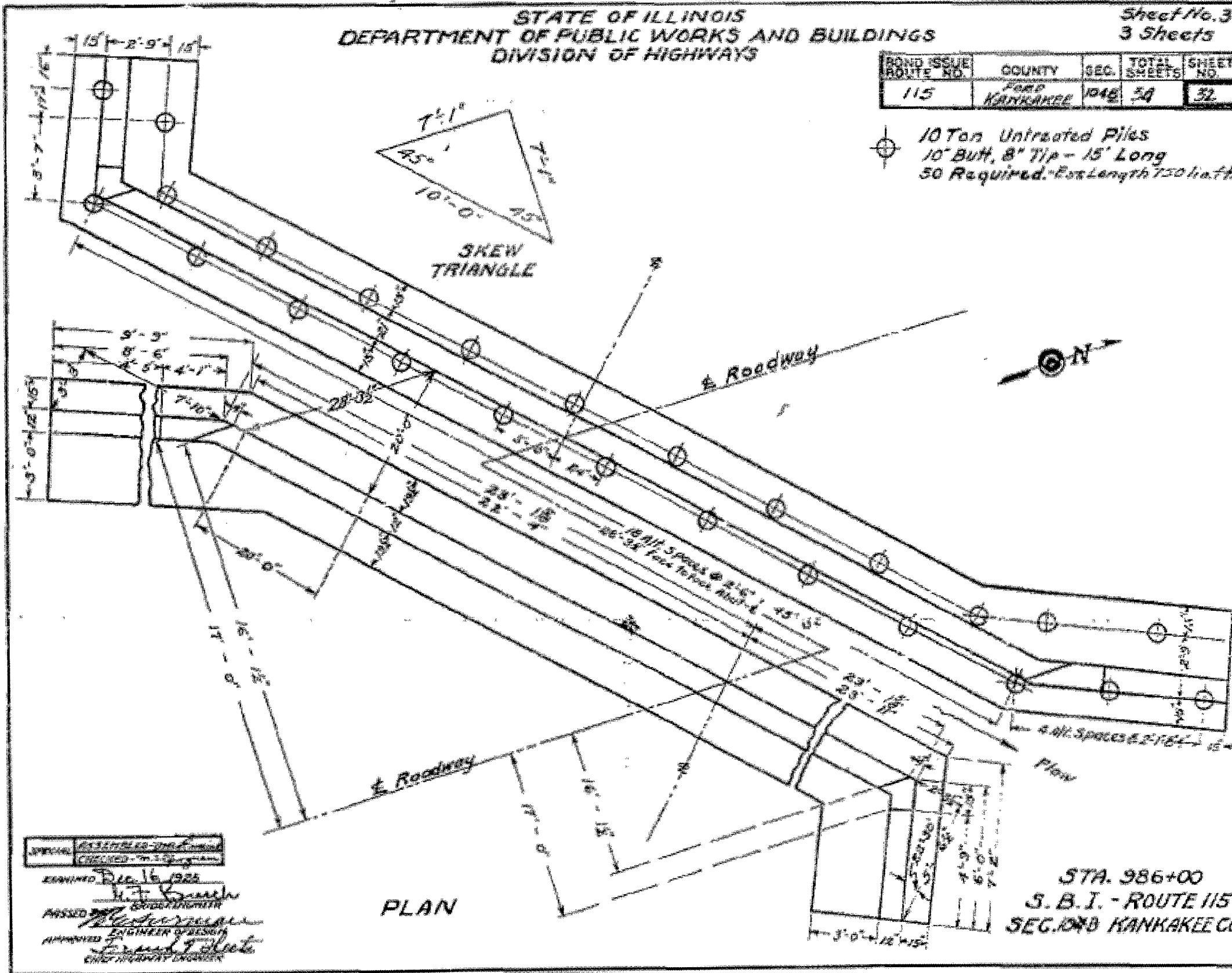
THIS SHEET FOR INFORMATION "ONLY"

STATE OF ILLINOIS
 DEPARTMENT OF PUBLIC WORKS AND BUILDINGS
 DIVISION OF HIGHWAYS

Sheet No. 3
 3 Sheets

BOND ISSUE ROUTE NO.	COUNTY	SEC.	TOTAL SHEETS	SHEET NO.
115	KANKAKEE	104B	54	32

10 Ton Untreated Piles
 10" Butt, 8" Tip - 15' Long
 50 Required - Est Length 750 h.a.ft



PLAN

STA. 986+00
 S. B. I. - ROUTE 115
 SEC. 104B KANKAKEE CO.

EXAMINED *Dec 16 1925*
 H. F. Smith
 PASSED BY *[Signature]*
 APPROVED *[Signature]*
 CHIEF HIGHWAY ENGINEER

THIS SHEET FOR INFORMATION "ONLY"