

|                     |          |                    |              |           |
|---------------------|----------|--------------------|--------------|-----------|
| F.A.S. RTE.         | SECTION  | COUNTY             | TOTAL SHEETS | SHEET NO. |
| 1249                | 23RS-6   | BUREAU             | 6            | 1         |
| FED. ROAD DIST. NO. | ILLINOIS | CONTRACT NO. 66760 |              |           |

**STATE OF ILLINOIS  
DEPARTMENT OF TRANSPORTATION  
DIVISION OF HIGHWAYS**

**PROPOSED  
HIGHWAY PLANS**

**FAS ROUTE 1249 (US 34)  
SECTION 23RS-6**

**BUREAU COUNTY  
C-93-050-08  
MILLING AND RESURFACING**

INDEX OF SHEETS

1. COVER SHEET
2. GENERAL NOTES
3. SUMMARY OF QUANTITIES
4. TYPICAL SECTIONS
5. PLAN VIEW
6. TYPICAL PAVEMENT MARKING

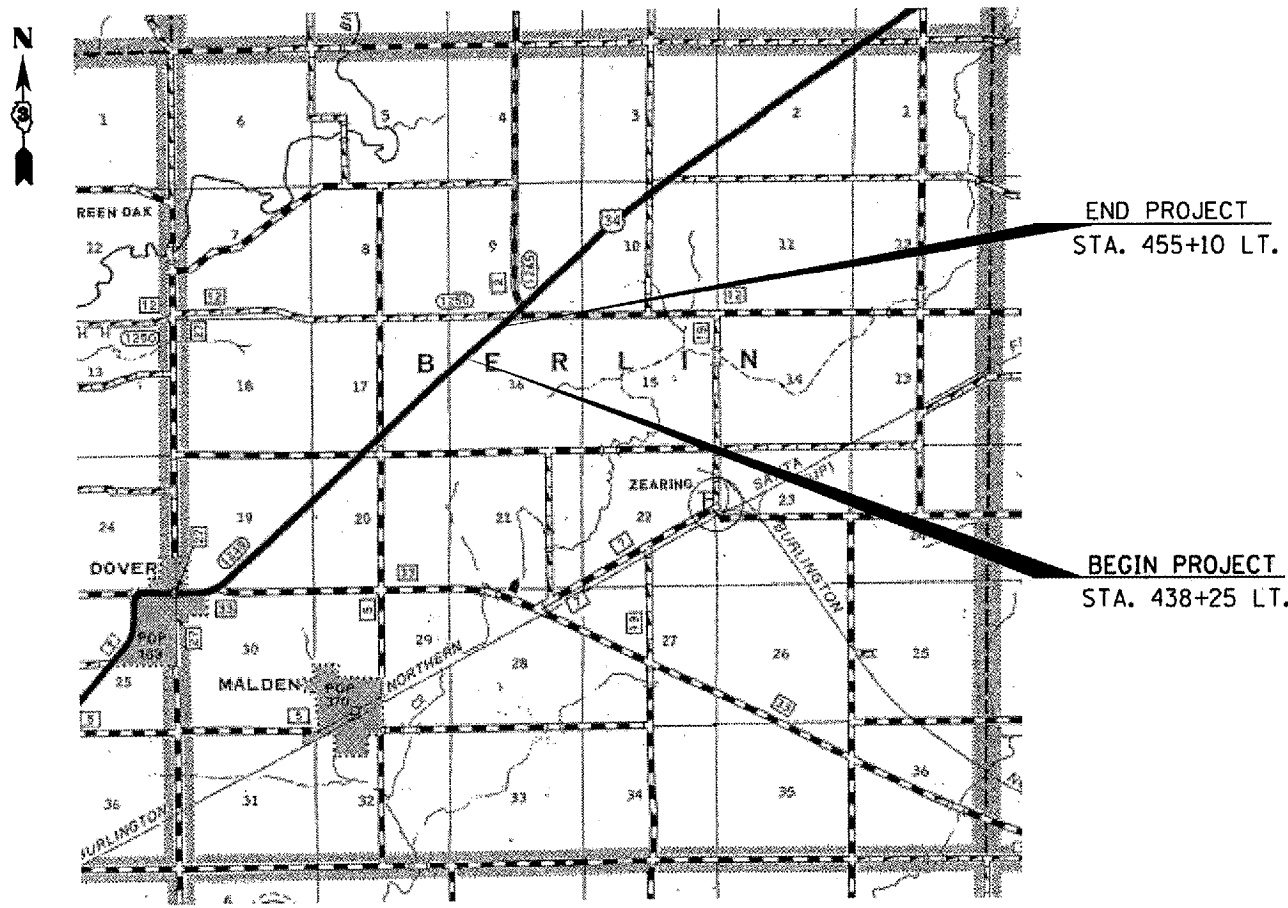
STANDARDS

- 000001-05 STANDARD SYMBOLS, ABBREVIATIONS AND PATTERNS  
 001006 DECIMAL OF AN INCH AND OF A FOOT  
 701001-01 OFF-ROAD OPERATIONS 2L, 2W, MORE THAN 4.5 m (15') AWAY  
 701006-02 OFF-ROAD OPERATIONS 2L, 2W, 4.5 m (15') TO 600 mm (24") FROM PAVEMENT EDGE  
 701011-01 OFF-ROAD MOVING OPERATIONS 2L, 2W, DAY ONLY  
 701301-02 LANE CLOSURE, 2L, 2W, SHORT TIME OPERATIONS  
 701306-01 LANE CLOSURE, 2L, 2W, SLOW MOVING OPERATIONS DAY ONLY, FOR SPEEDS  $\geq$  45 MPH  
 701311-02 LANE CLOSURE, 2L, 2W, MOVING OPERATIONS - DAY ONLY  
 701901 TRAFFIC CONTROL DEVICES

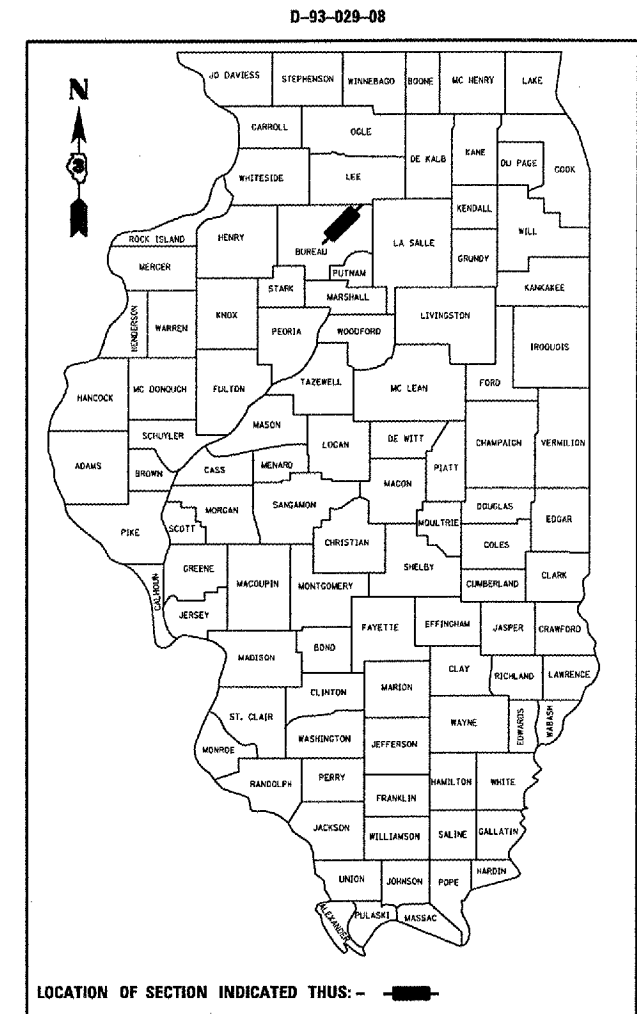
MICROFILMED \_\_\_\_\_  
 REEL NUMBER \_\_\_\_\_  
 AWARDED \_\_\_\_\_  
 RESIDENT ENGINEER \_\_\_\_\_  
 AS BUILT CHANGES WERE MADE  
 ON THE FOLLOWING SHEETS \_\_\_\_\_

J.U.L.I.E.  
 JOINT UTILITY LOCATION INFORMATION FOR EXCAVATION  
 1-800-892-0123

**DISTRICT 3 NO. (815) 434-6131**  
**PROJECT ENGINEER: JOE KANNEL**  
**UNIT CHIEF: RON WOODSHANK**  
**TOWNSHIP: BERLIN**  
**CONTRACT NO. 66760**



**LOCATION MAP  
NOT TO SCALE**  
 GROSS LENGTH OF PROJECT: 1685 FT. = 0.32 MILES  
 NET LENGTH OF PROJECT: 1685 FT. = 0.32 MILES



**FUNCTIONAL CLASSIFICATION**  
 RURAL - MAJOR ARTERIAL  
 F.A.S. ROUTE 1249 (US 34)  
 2005 ADT = 1250  
 P.V. = 91.2%    M.U. = 4.8%    S.U. = 4.0%

**STATE OF ILLINOIS  
DEPARTMENT OF TRANSPORTATION  
DIVISION OF HIGHWAYS**

SUBMITTED 2/15 2008  
*George Ryan*  
 DEPUTY DIRECTOR OF HIGHWAYS, REGION ENGINEER  
March 21 2008  
*Eric E. Harm*  
 INTERIM ENGINEER OF DESIGN AND ENVIRONMENT  
March 21 2008  
*Christine M. Reed*  
 DIRECTOR OF HIGHWAYS, CHIEF ENGINEER

**PRINTED BY THE AUTHORITY  
OF THE STATE OF ILLINOIS**