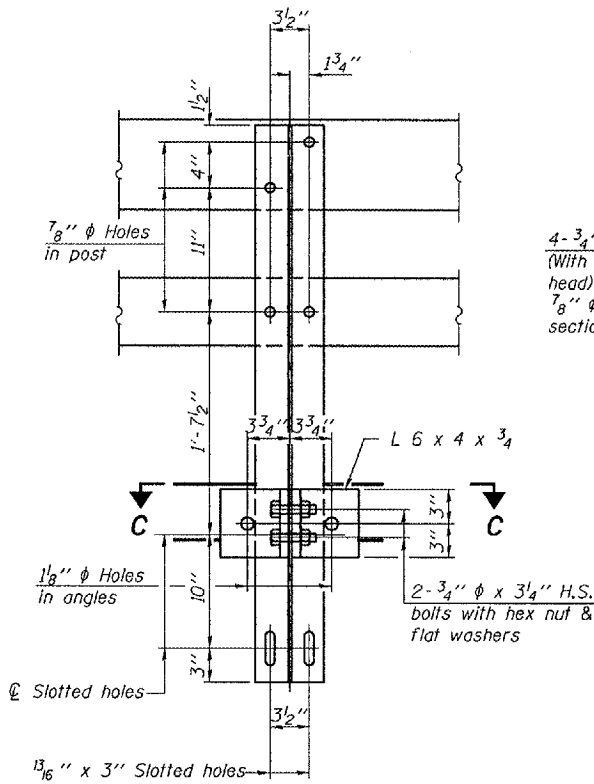
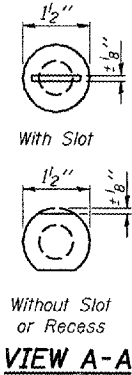
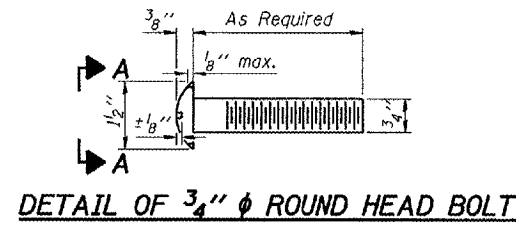


STATE OF ILLINOIS
DEPARTMENT OF TRANSPORTATION

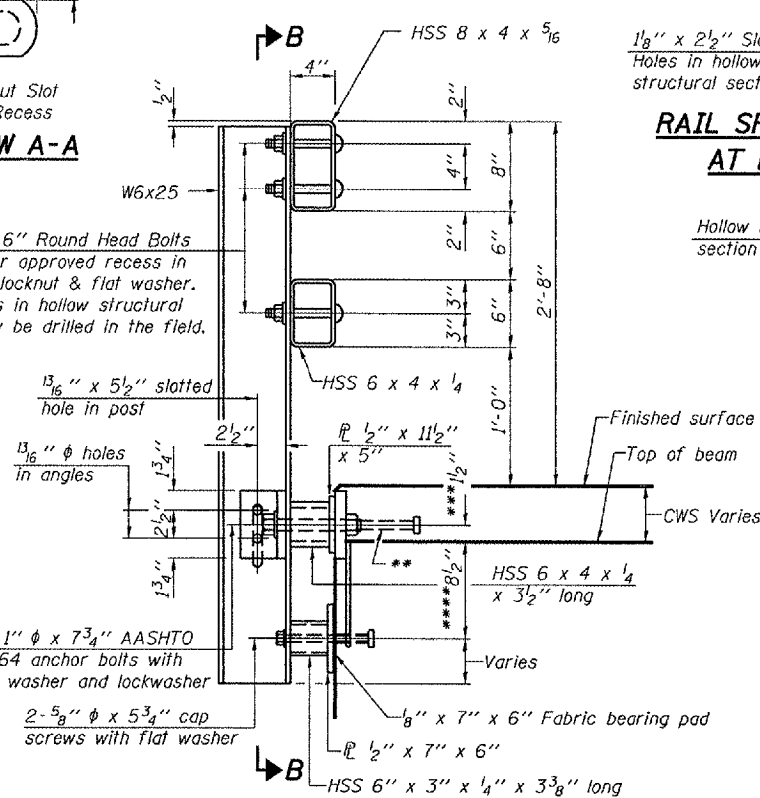
ROUTE NO.	SECTION	COUNTY	DATE	SHEET	SHEET NO. 6 10 SHEETS
F.A.S. 2244	(107B) BR	STARK	3/19	19	
FED. ROAD DIST. NO. 7	ILLINOIS	FED. AID PROJECT			

Contract #68115

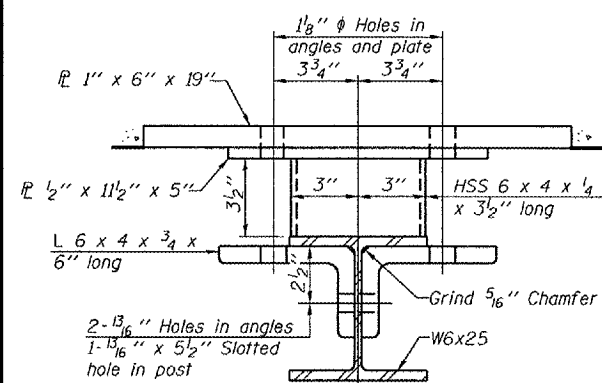


SECTION B-B

4-3/4" ϕ x 6" Round Head Bolts
(With slot or approved recess in head) with locknut & flat washer.
7/8" ϕ holes in hollow structural section may be drilled in the field.



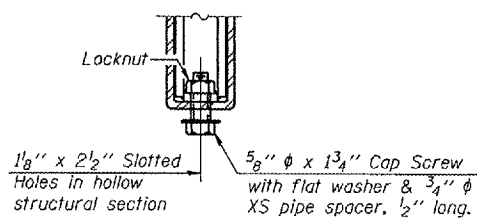
SECTION AT RAIL POST



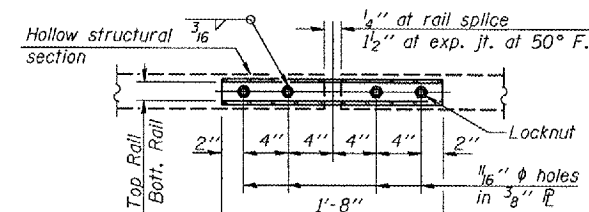
SECTION C-C

DESIGNED Stephen M Ryan
CHECKED Dan F Zerrusen
DRAWN R. Sommer
CHECKED SMR/DFZ/SEM

EXAMINED Thomas J. Demasak
PASSED Robert E. Anderson
MARCH 4, 2008
ENGINEER OF BRIDGES AND STRUCTURES

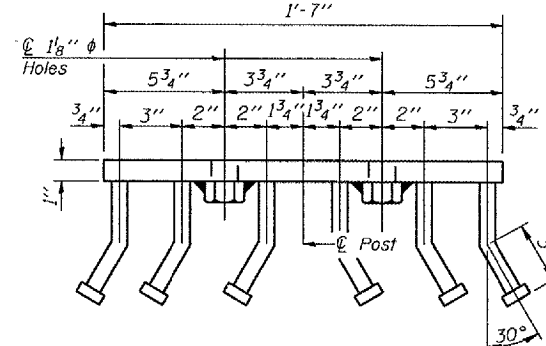


RAIL SPLICE CONNECTION
AT EXPANSION JT.

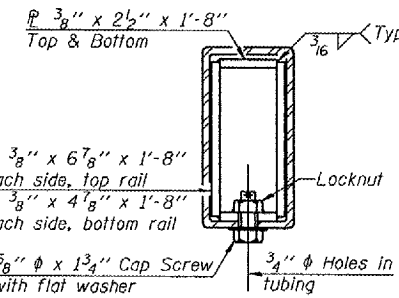


PLAN-BOTT. SPLICE TYPICAL

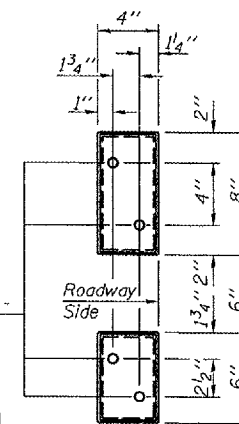
4-5/8" reduced base welded studs. Provide 4-5/8" washers and self-locking nuts or nuts and jam nuts for guardrail connection shown on Std. 631032



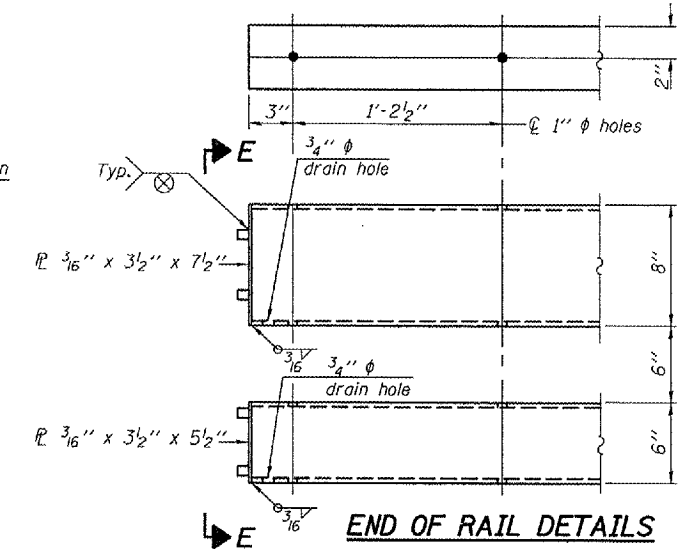
VIEW D-D



SECTION AT RAIL SPLICE



VIEW E-E

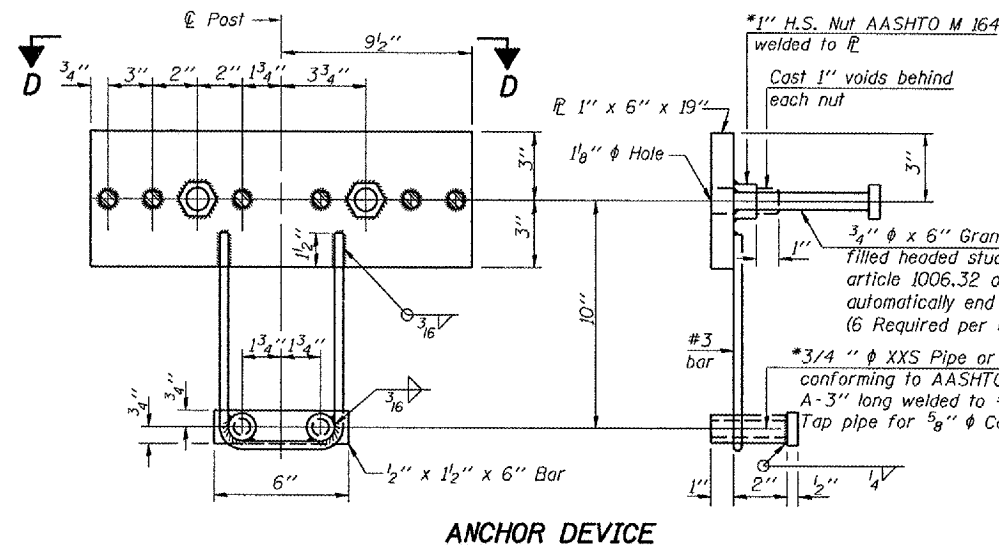


END OF RAIL DETAILS

Notes:
All field drilled holes shall be coated with an approved zinc rich paint before erection.
For multi-span bridges, sufficient 1/4" x 6" x 1'-2" galvanized steel shims shall be provided to align rail between adjacent spans. Cost included with Steel Railing, Type SM.
Steel rail elements shall be galvanized according to Article 509.05 of the Standard Specifications.

**The studs of the anchor devices shall be placed below the top reinforcement bars and the outermost longitudinal reinforcement bar shall be placed directly above the studs of the rail post anchor device.

***For first rail post adjacent to abutments only, this dimension is 2".
****For first rail post adjacent to abutments only, this dimension is 8".



ANCHOR DEVICE

*Threaded areas shall be plugged or blocked off during casting of beam. Galvanized after fabrication.

BILL OF MATERIAL

Item	Unif	Quantity
Steel Railing, Type SM	Foot	126

STEEL RAILING, TYPE SM
WITH CONCRETE WEARING SURFACE
F.A.S. ROUTE 2244 - SECTION (107B)BR
STARK COUNTY
STATION 85+31.81
STRUCTURE NO. 088-0029