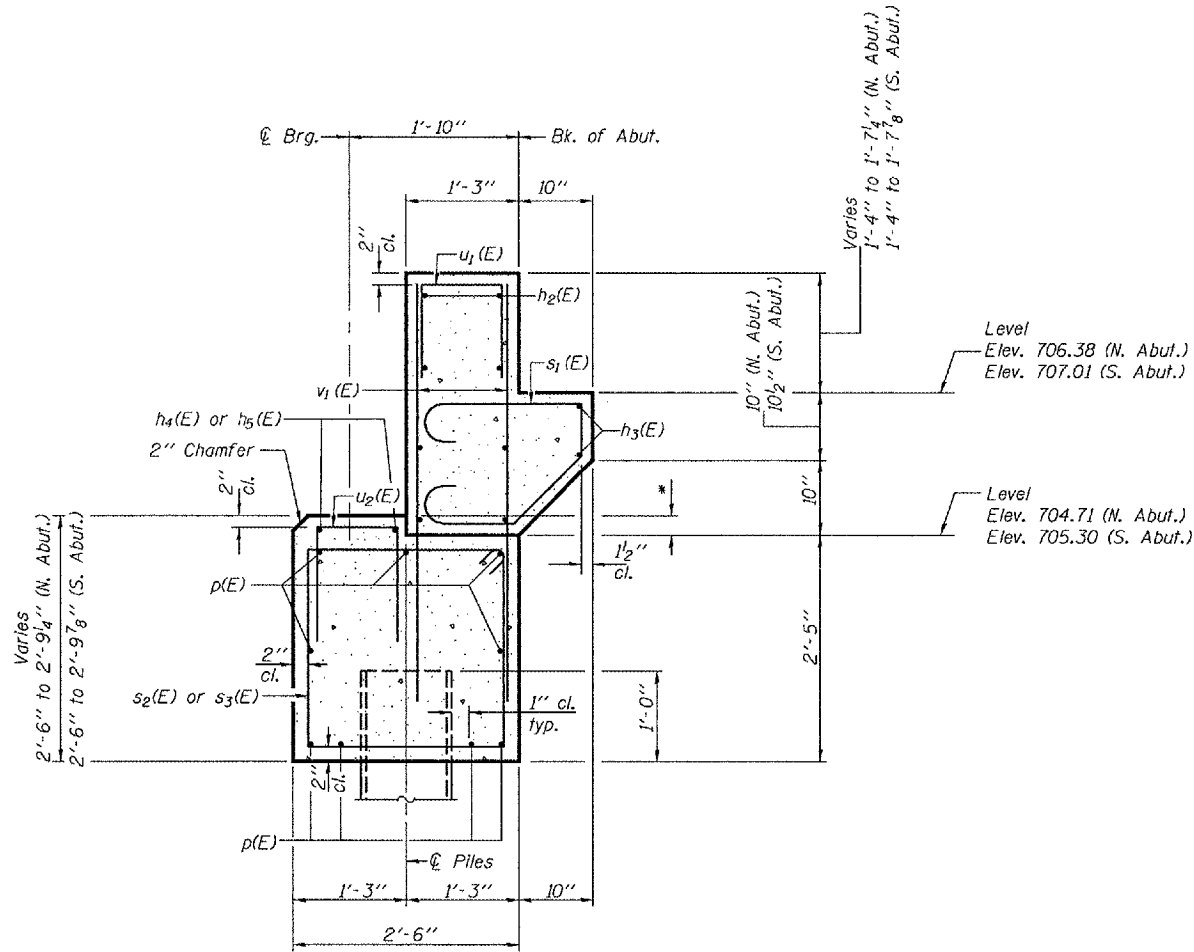


STATE OF ILLINOIS  
DEPARTMENT OF TRANSPORTATION

ROUTE NO.	SECTION	COUNTY	SHEET	SHEET NO.
F.A.S. 2244	(107B) BR	STARK	30 21	8
FED. ROAD DIST. NO. 7		ILLINOIS	FED. AID PROJECT	

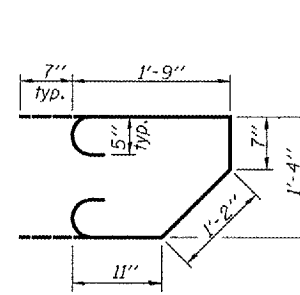
Contract #68115



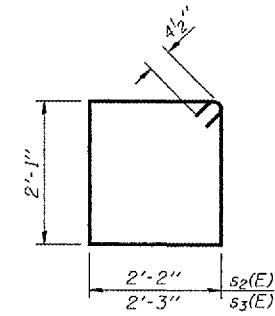
**SECTION THRU ABUTMENT**

(Showing dimensions at Rt. L's)  
(Hatching not shown)

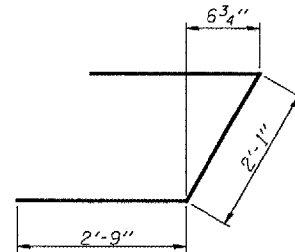
\*Varies 1" to 4 1/4" (N. Abut.)  
Varies 1" to 4 3/8" (S. Abut.)



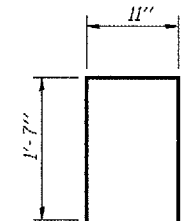
**BAR s1(E)**



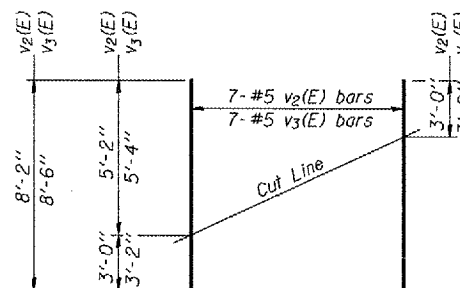
**BARS s2(E) & s3(E)**



**BAR u(E)**



**BARS u1(E) & u2(E)**



**FIELD CUTTING DIAGRAM**

Order v2(E) and v3(E) Full length. Cut as shown  
and use remainder of bars in opposite face.

**TWO ABUTMENTS  
BILL OF MATERIAL**

Bar	No.	Size	Length	Shape
h(E)	32	#5	8'-9"	—
h1(E)	32	#5	8'-5"	—
h2(E)	16	#6	33'-2"	—
h3(E)	4	#6	30'-11"	—
h4(E)	2	#4	6'-0"	—
h5(E)	2	#4	10'-0"	—
p(E)	18	#6	33'-1"	—
s1(E)	64	#5	5'-7"	U
s2(E)	60	#4	9'-3"	□
s3(E)	4	#4	9'-5"	□
u(E)	16	#6	7'-7"	Z
u1(E)	68	#5	4'-1"	U
u2(E)	16	#4	4'-1"	U
v1(E)	136	#5	4'-6"	—
v2(E)	21	#5	8'-2"	—
v3(E)	7	#5	8'-6"	—
Concrete Structures			Cu. Yd.	31.9
Reinforcement Bars, Epoxy Coated			Pound	4630
Structure Excavation			Cu. Yd.	18.3

**ABUTMENT DETAILS**

F.A.S. ROUTE 2244 - SECTION (107B)BR  
STARK COUNTY  
STATION 85+31.81  
STRUCTURE NO. 088-0029

DESIGNED	Stephen M Ryan
CHECKED	Dan F Zerrusen
DRAWN	R. Sommer
CHECKED	SMR/DFZ/SEM

EXAMINED	Thomas J. Domagala	March 4, 2008
PASSED	Ralph E. Carlson	