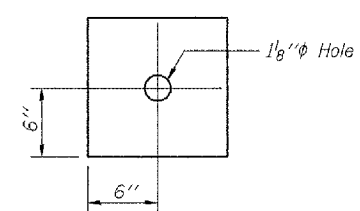
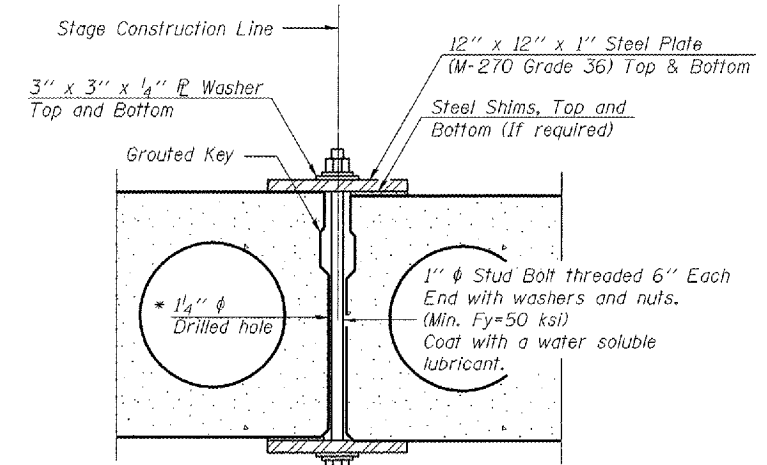
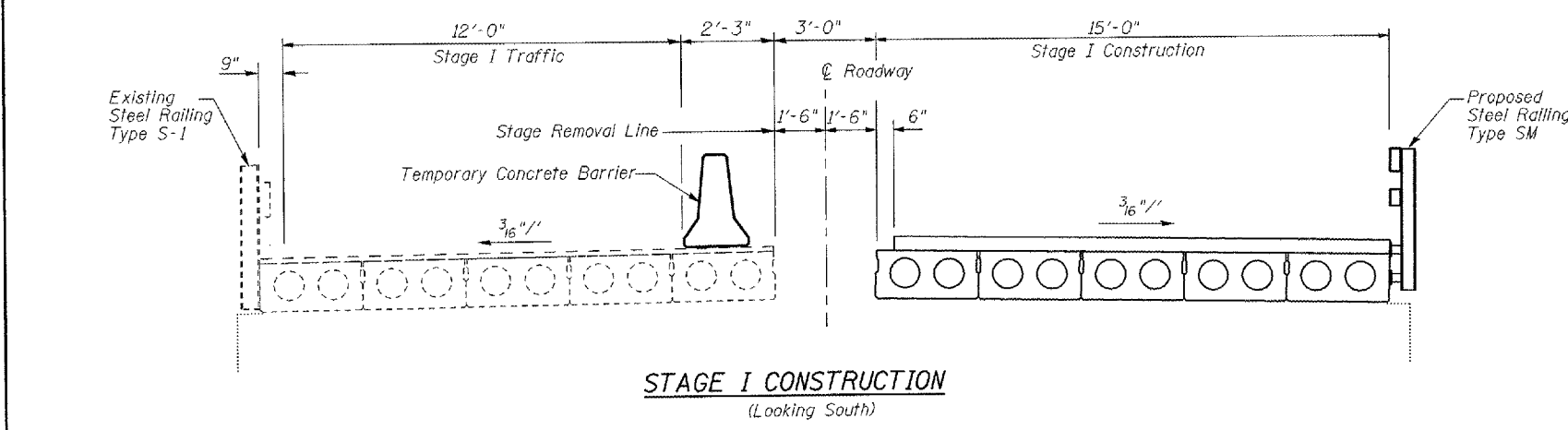
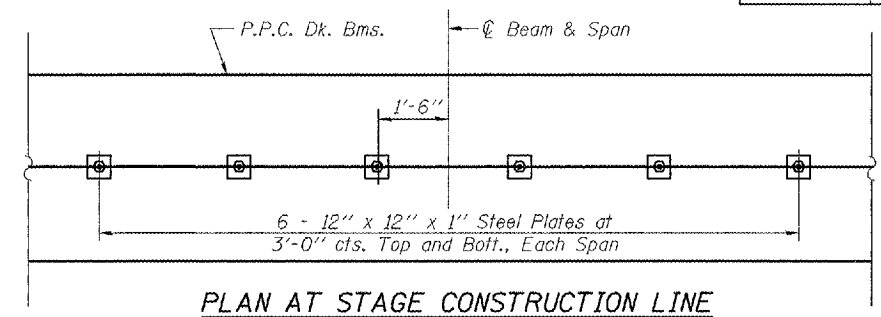
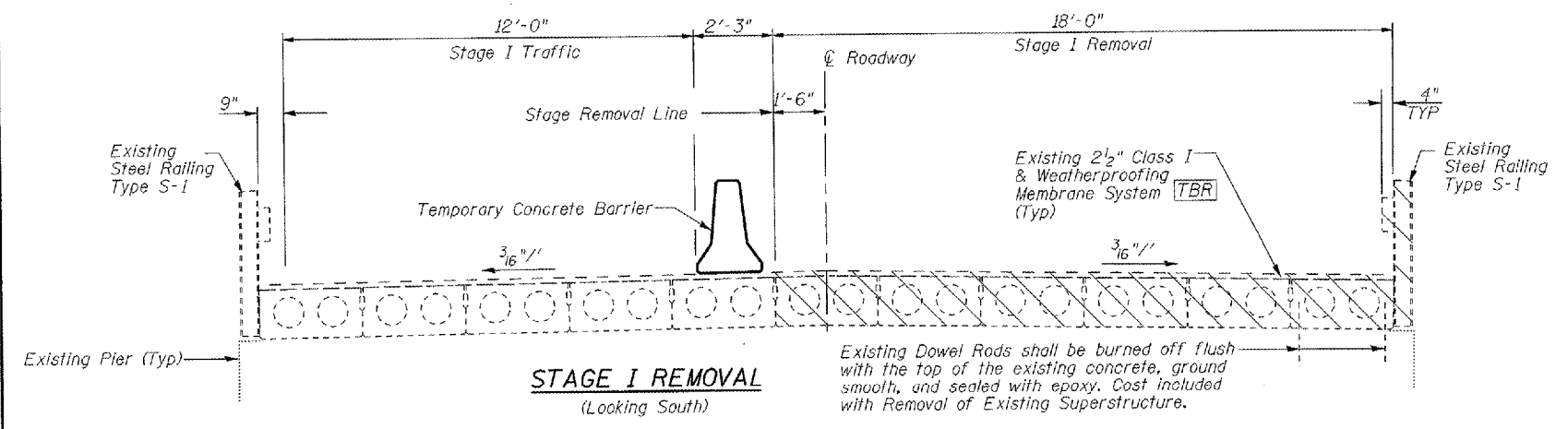


F.A.P. RTE.	SECTION	COUNTY	TOTAL SHEETS	SHEET NO.
310	(39B)1	McDONOUGH	38	11
STA.	TO STA.			
FED. ROAD DIST. NO.	ILLINOIS	FED. AID PROJECT		

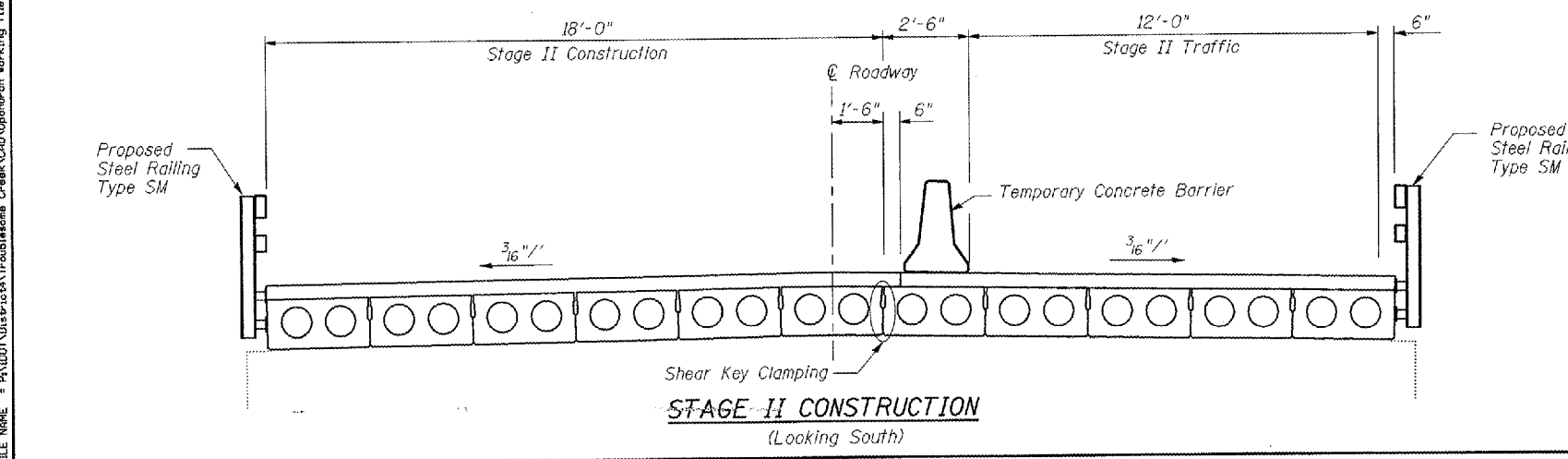
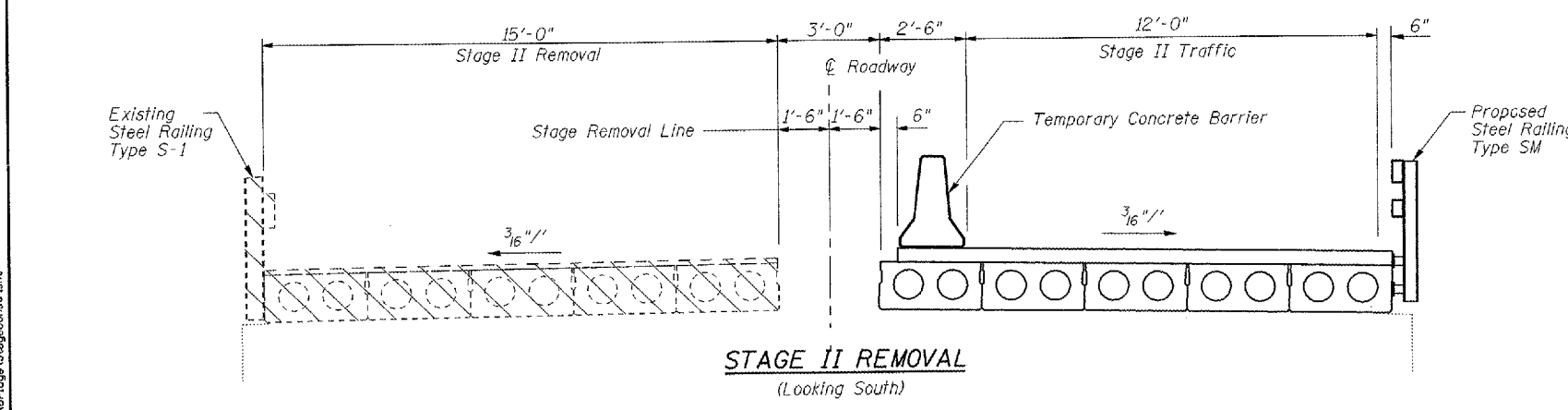


**SHEAR KEY CLAMPING DETAILS AT STAGE CONST. JT.**

See Stage Construction Details for traffic lanes.

\* As an alternate to the drilled holes, the Contractor may request the Fabricator to cast 2" diameter semi-circular recesses in the sides of each beam adjacent to the stage construction line. These recesses should align to form a hole at the appropriate locations for the clamping device bolts. If the Contractor elects to use this alternate, the details shall be identified on the shop drawings.

Notes: All Cross sections are looking upstation. Hatched area indicates "Removal of Existing Superstructures". Cost of removal of the existing wearing surface, existing precast concrete bridge slab and steel railing (including the railing on the approach) are included with "Removal of Existing Superstructures". For quantity of Temporary Concrete Barrier see Roadway Plans.



REVISIONS	
NAME	DATE

ILLINOIS DEPARTMENT OF TRANSPORTATION

**STAGE CONSTRUCTION DETAILS**  
US 67 OVER TROUBLESOME CREEK  
FAP 310 SECTION (39B)1  
McDONOUGH COUNTY STR. 055-0005

SCALE: N.T.S. | DRAWN BY: GEW  
DATE: DEC 2007 | CHECKED BY: MJS

TUG PRICE = 350 PLUS 3% | 3/15/04 AM  
 FILE NAME = P:\PROJECTS\310\39B\39B1\Drawings\StageConst.dwg  
 FILE DATE = 12/15/07