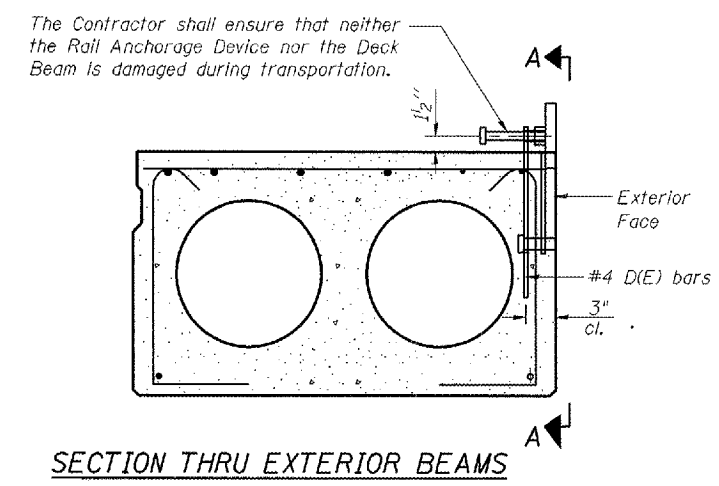
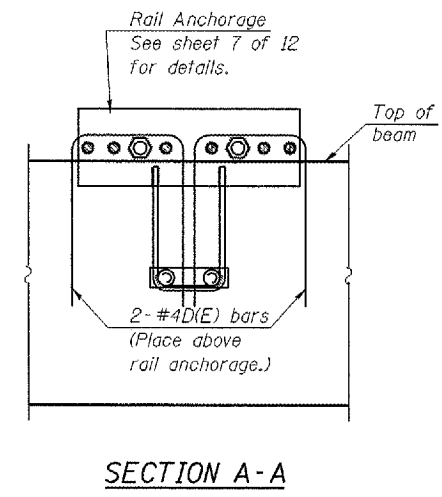
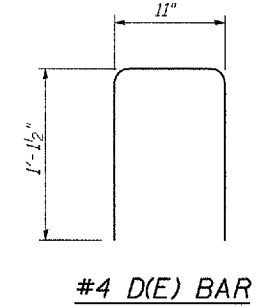
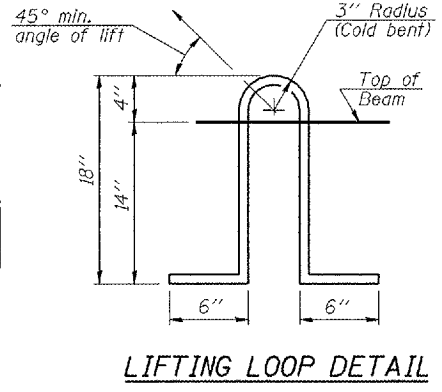
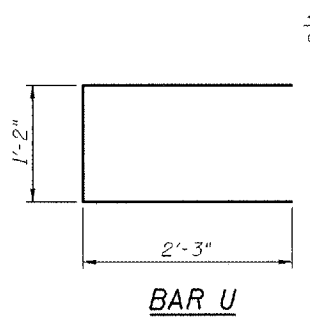
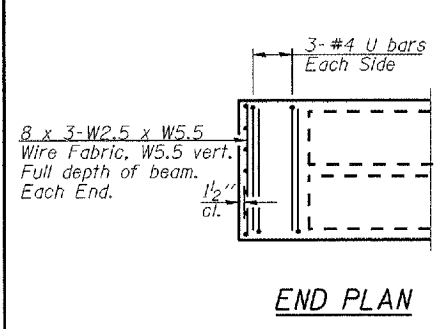
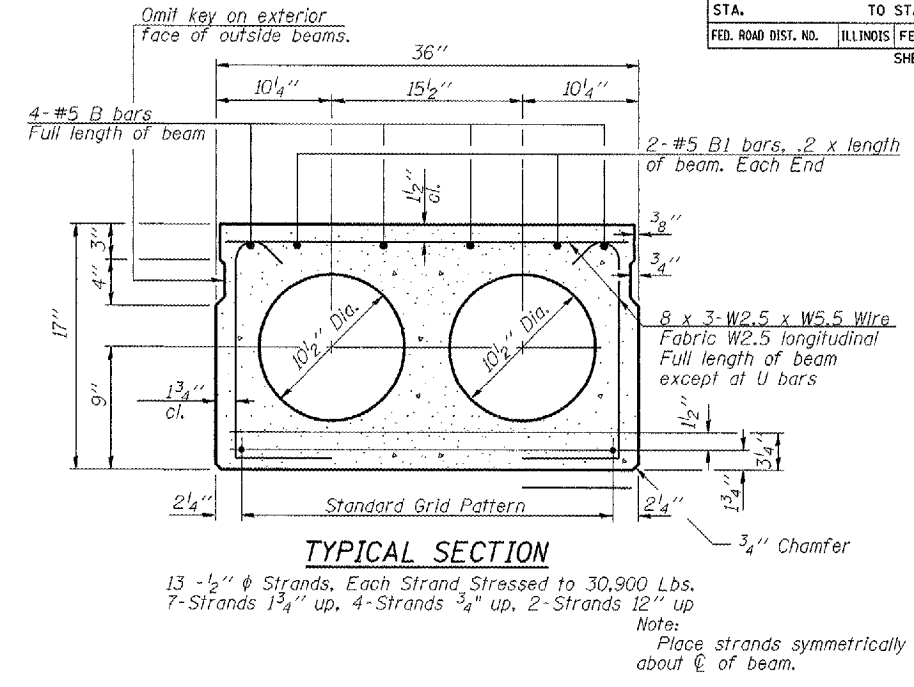
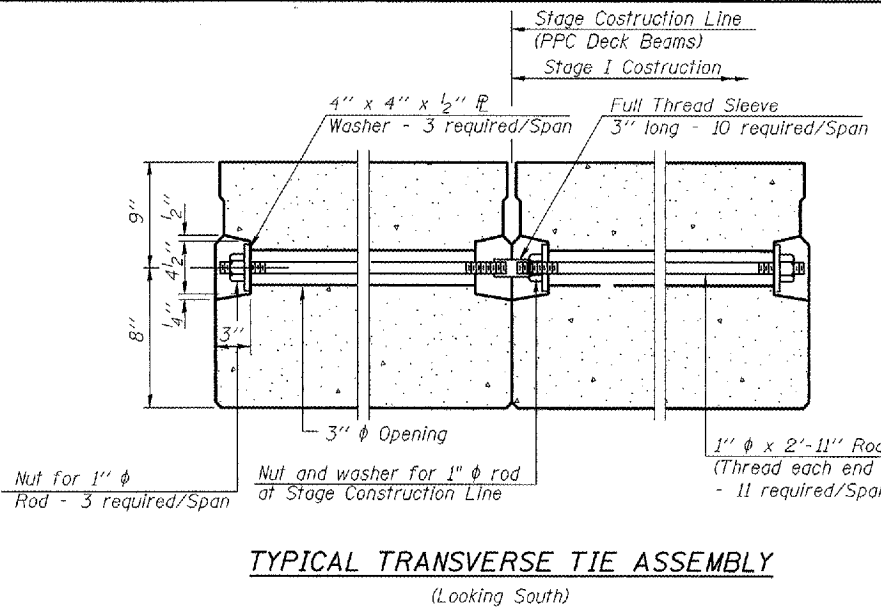
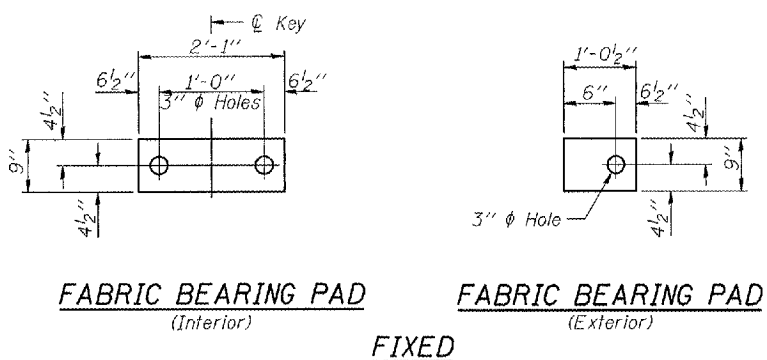


F.A.P. RTE.	SECTION	COUNTY	TOTAL SHEETS	SHEET NO.
310	(39B)I	McDONOUGH	38	13
STA.		TO STA.		
FED. ROAD DIST. NO.		ILLINOIS FED. AID PROJECT		
SHEET 4 OF 12 SHEETS				

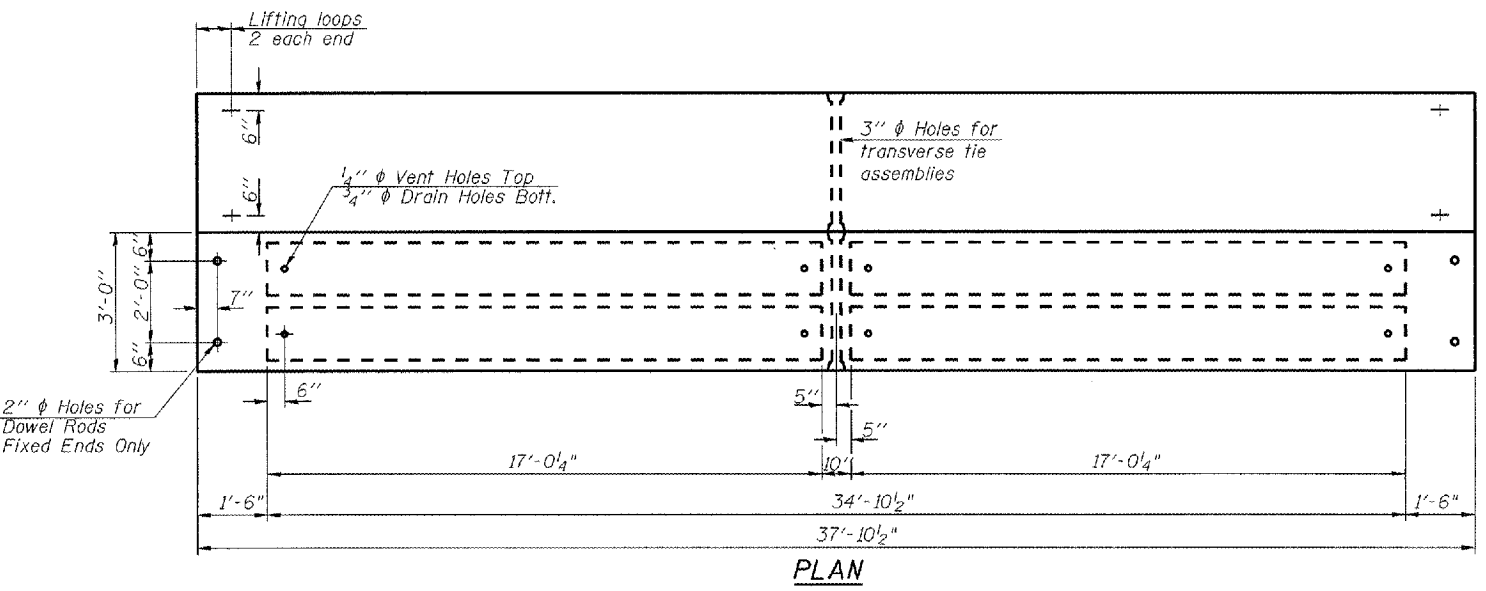


The rail anchorage shall be cast with the beam and the wearing surface shall be cast in the field. Formwork necessary for the wearing surface may be secured utilizing the bottom rail anchorage inserts and/or additional inserts cast into beam. Drilling into the beam will not be permitted.

See Typical Section for strand pattern, dimensions and bar locations.

**NOTES**

- Prestressing steel shall be uncoated high strength, low relaxation 7-wire strand, Grade 270. The nominal diameter shall be 1/2" and the nominal cross-sectional area shall be 0.153 sq. in. Lifting loops shall be 2-1/2"  $\phi$ -270 ksi strands, as shown.
- The 1"  $\phi$  rods in the transverse tie assembly shall be tightened to a snug fit and the threads set. Packets that receive transverse tie bar on outside shall be filled with grout after transverse tie assembly is in place.
- Non prestressing steel shall conform to ASTM A 706 (IL MOD), Grade 60.
- The bearing seat surfaces shall be adjusted by shimming to assure firm and even bearing. Two 1/8" fabric adjusting shims of the dimensions of the Exterior Bearing Pad shall be provided for each bearing.
- Keyway surfaces shall be cleaned to remove form oil or other bond breaking material prior to shipment of the beams. Cleaning shall be done by sandblasting the keyway areas between top of the beam and the bottom edge of the key.
- Corrosion Inhibitor, per Article 1020.05(b)(12) of the Standard Specifications, shall be used in the concrete for precast prestressed concrete deck beams.
- Required Release Strength, f'cl, shall be 4,000 p.s.i.
- See Sheet 6 and 7 of 12 for rail anchorage locations.



**BILL OF MATERIAL**

Item	Unit	Quantity
Precast Prestressed Conc. Deck Bms.	Sq. Ft.	2500

REVISIONS	
NAME	DATE

ILLINOIS DEPARTMENT OF TRANSPORTATION

**DECK BEAM DETAILS**  
US 67 OVER TROUBLESOME CREEK  
FAP 310 SECTION (39B)I  
McDONOUGH COUNTY STR. 055-0005

SCALE: \_\_\_\_\_ DRAWN BY \_\_\_\_\_  
DATE DEC 2007 CHECKED BY MJS

TUG PROJ. # 2107612-81  
 PLOT DATE = 1/18/2008 10:13:43 AM  
 FILE NAME = F:\1007\Drawings\1007\055-0005\055-0005\DeckBeam.dwg