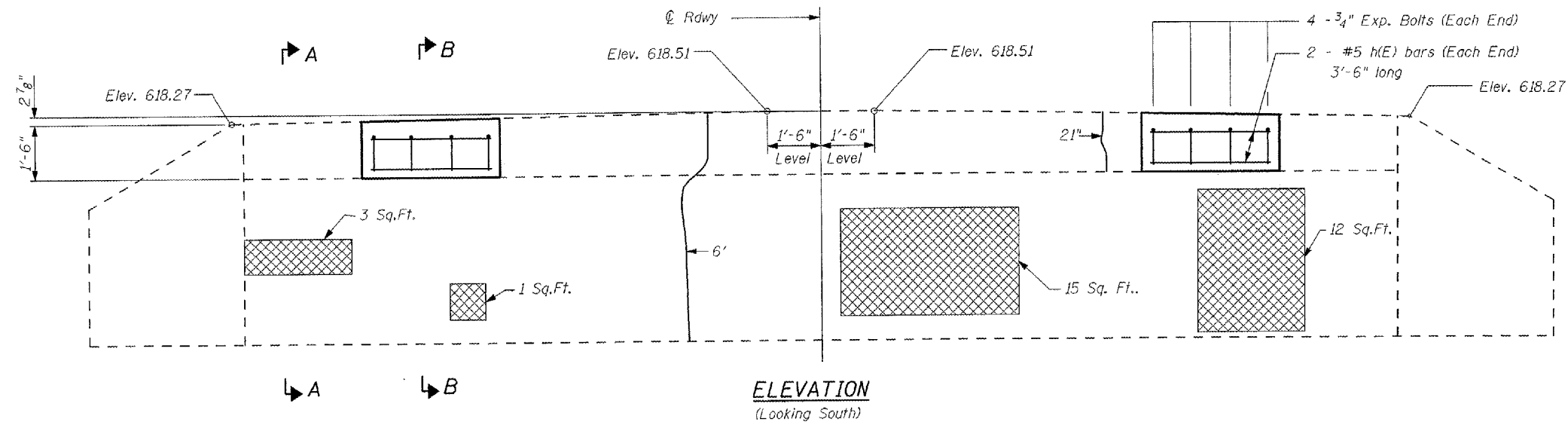
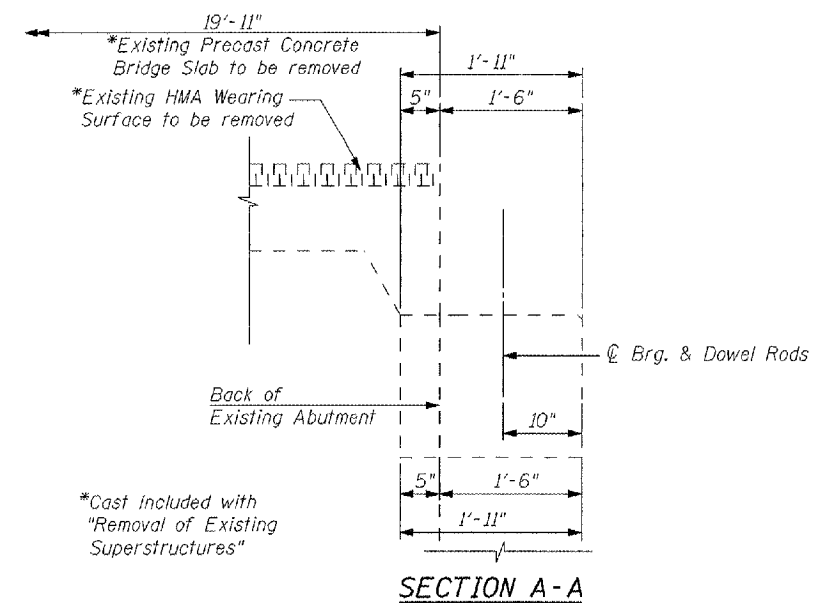


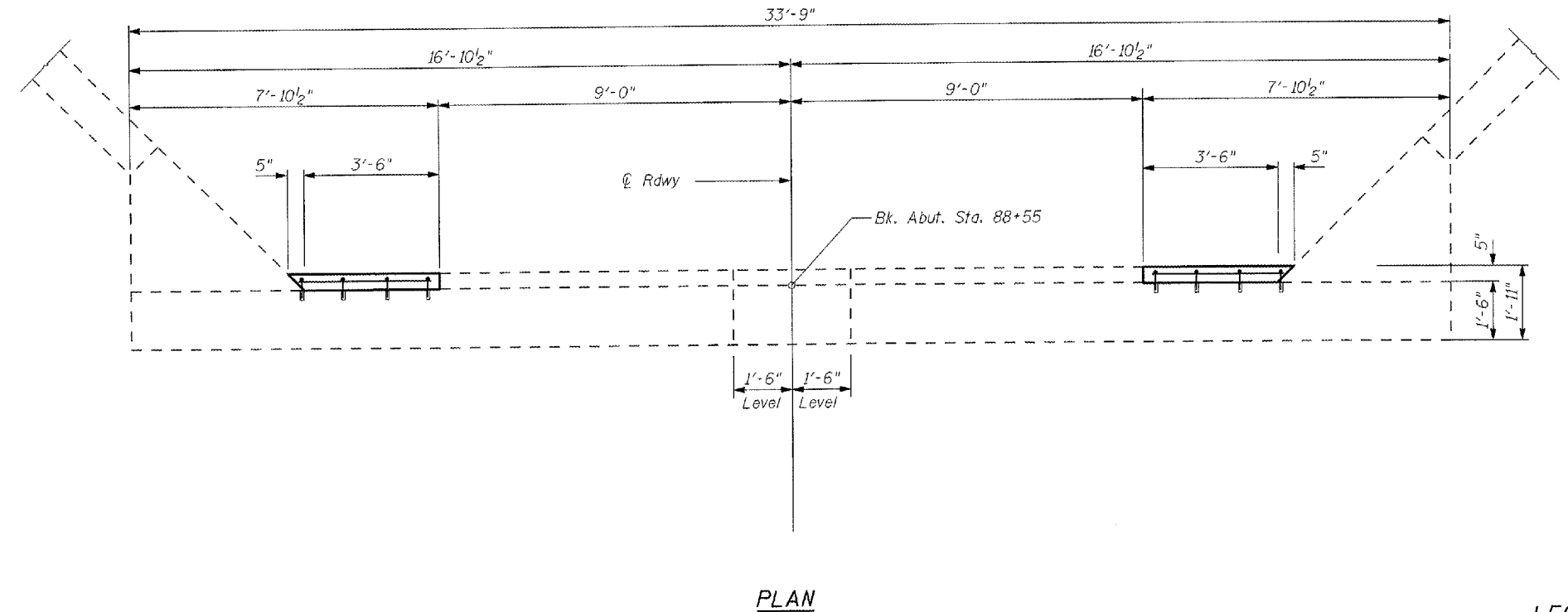
F.A.P. RTE.	SECTION	COUNTY	TOTAL SHEETS	SHEET NO.
310	(39B)I	McDONOUGH	38	17
STA.		TO STA.		
FED. ROAD DIST. NO.		ILLINOIS FED. AID PROJECT		



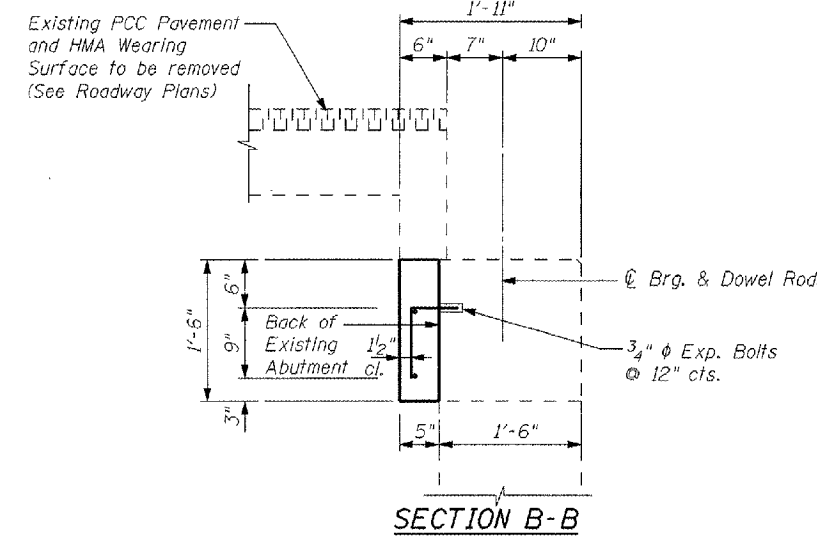
ELEVATION
(Looking South)



SECTION A-A



PLAN



SECTION B-B

BILL OF MATERIAL

ITEM	UNIT	QUANTITY
Concrete Structures	Cu. Yd.	0.2
Reinforcement Bars, Epoxy Coated	Pound	15
Expansion Bolts 3/4" φ	Each	8
Epoxy Crack Injection	Foot	8
Structural Repair of Concrete (Depth equal to or less than 5")	Sq. Ft.	31

LEGEND

- Structural repair of Concrete (Depth equal to or less than 5")
- $\pm 5"$ Epoxy Crack Injection (Crack widths shown are approx. 1/16" to 1/8" in width)
- H.L. Hairline Crack (not to be sealed)

REVISIONS	
NAME	DATE

ILLINOIS DEPARTMENT OF TRANSPORTATION
SOUTH ABUTMENT
US 67 OVER TROUBLESOME CREEK
FAP 310 SECTION (39B)I
McDONOUGH COUNTY STR. 055-0005
SCALE: DRAWN BY RMH
DATE DEC 2007 CHECKED BY MJS

T:\05 PROJ. 310\702-01 310128.dwg
 FILE NAME = P:\05\Projects\310\702-01\Troublesome Creek\CAD\Upchurch working Files\Bridge\South Abutment.dwg