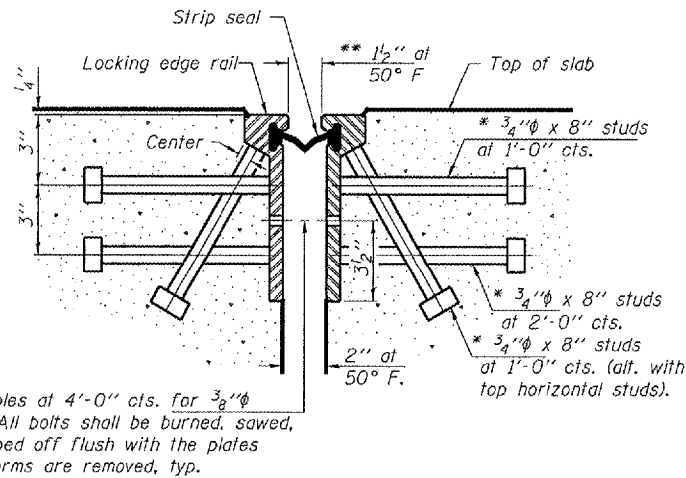


STATE OF ILLINOIS
DEPARTMENT OF TRANSPORTATION

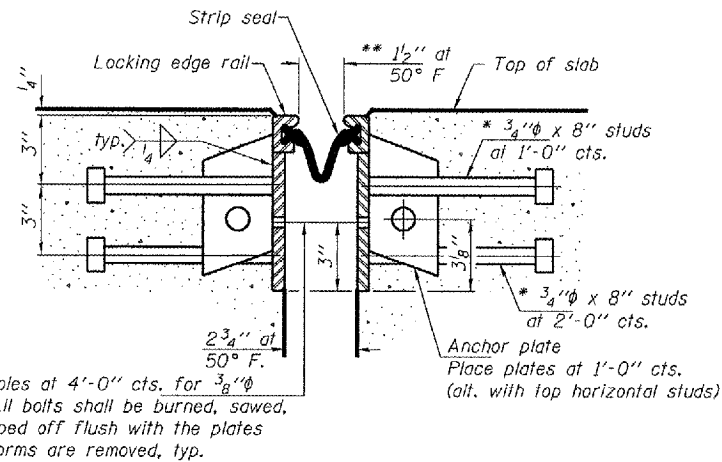
ROUTE NO.	SECTION	COUNTY	SHEETS	SHEET	SHEET NO. 5
FA 63		PUTNAM	25	21	6 SHEETS
FED. ROAD DIST. NO. 7	ILLINOIS	FED. AID PROJECT			

Contract Number: 68713

* Granular or solid flux filled headed studs conforming to Article 1006.32 of the Std. Specs., automatically end welded.
** When joint is fixed, dimension is set at 1 1/2".

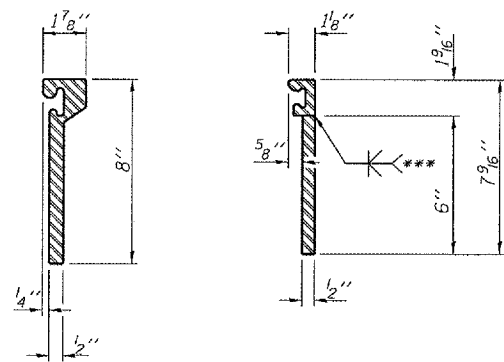


**SECTION THRU
ROLLED RAIL JOINT**

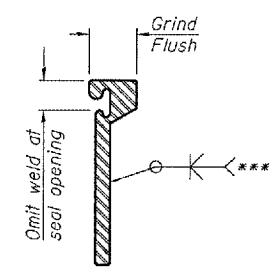


**SECTION THRU
WELDED RAIL JOINT**

Notes:
The strip seal shall be made continuous and shall have a minimum thickness of 1/4". The configuration of the strip seal shall match the configuration of the Locking Edge Rails. Open or "webbed" strip seal gland configurations are not permitted. The gland shall be sized for a maximum rated movement of 4 inches.
The height and thickness of the Locking Edge Rails shown are minimum dimensions. The actual configuration of the Locking Edge Rails and matching strip seal may vary from manufacturer to manufacturer. Flanged edge rails will not be allowed. Locking Edge Rails may be spliced at slope discontinuities and stage construction joints.
The manufacturer's recommended installation methods shall be followed.
The joint opening and deck dimensions detailed on the superstructure are based on a rolled rail expansion joint. If the Contractor elects to use the welded rail expansion joint, the opening and deck dimensions shall be modified according to the dimensions detailed on this sheet. Required modifications shall be made at no additional cost to the State.
All steel components shall be galvanized after fabrication according to Article 520.03 of the Standard Specifications.



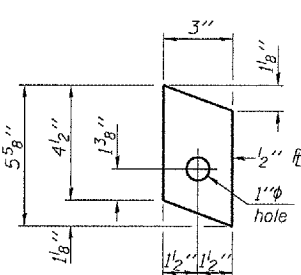
ROLLED (EXTRUDED) RAIL **WELDED RAIL**



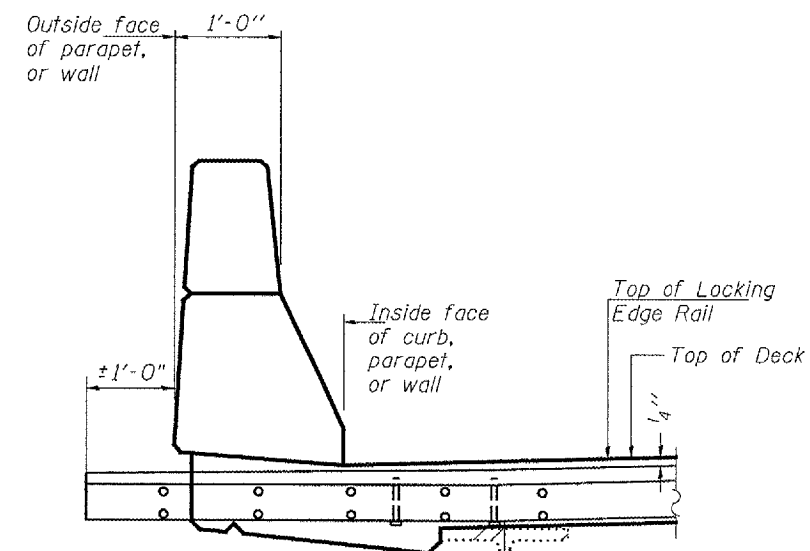
*** Back gouge not required if complete joint penetration is verified by mock-up.

LOCKING EDGE RAIL SPLICE

The inside of the locking edge rail groove shall be free of weld residue.

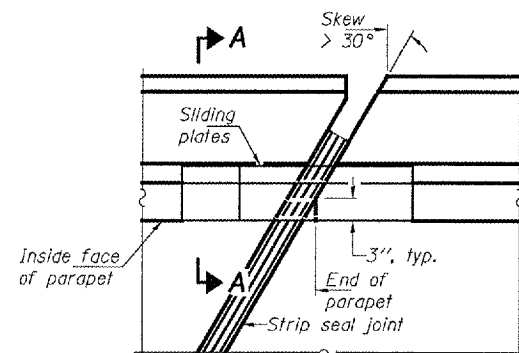


ANCHOR PLATE
(for welded rail)



AT CURB, PARAPET, OR WALL

LOCKING EDGE RAILS



PLAN

BILL OF MATERIAL

Item	Unit	Total
Preformed Joint Strip Seal	Foal	107

DESIGNED	ATH
CHECKED	AJB
DRAWN	Steffen
CHECKED	ATH AJB

MARCH 5, 2008
EXAMINED *Carl Hovner*
ENGINEER OF STRUCTURAL SERVICES
PASSED *Ralph E. Anderson*
ENGINEER OF BRIDGES AND STRUCTURES

PREFORMED JOINT STRIP SEAL
F.A. ROUTE 63 OVER
SENACHWINE CREEK
PUTNAM COUNTY
SN 078-0003