

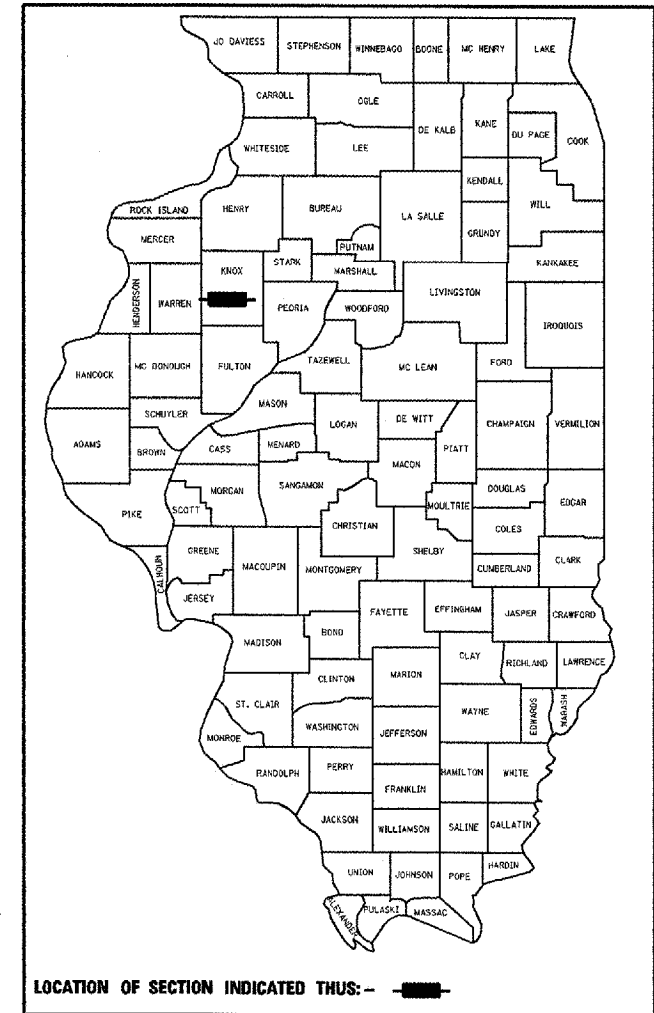
STATE OF ILLINOIS
DEPARTMENT OF TRANSPORTATION
DIVISION OF HIGHWAYS

PROPOSED
HIGHWAY PLANS

FAS ROUTE 2401 (US 150)
SECTION (40V)I-1
KNOX COUNTY
EMERGENCY BRIDGE BEAM REPAIRS
C-94-019-08

F.A.S. RTE.	SECTION	COUNTY	TOTAL SHEETS	SHEET NO.
2401	(40V)I-1	KNOX	13	1
FED. ROAD DIST. NO. 4		US 150	CONTRACT NO. 68780	

D-84-018-08



DESCRIPTION:
EMERGENCY BRIDGE BEAM REPAIRS - REPLACE
8 DECK BEAMS ON STRUCTURE CARRYING US 150
OVER BURLINGTON NORTHERN RAILROAD
(S.N. 048-0013), 0.2 MILES EAST OF GALESBURG
STA. 66 + 15

STATE OF ILLINOIS
 DEPARTMENT OF TRANSPORTATION
 DIVISION OF HIGHWAYS

SUBMITTED FEB 6 20 08

[Signature]
 DEPUTY DIRECTOR OF HIGHWAYS, REGION ENGINEER

March 21 20 08
Eric S. Hain
 ENGINEER OF DESIGN AND ENVIRONMENT

March 21 20 08
Christine M. Reed
 DIRECTOR OF HIGHWAYS, CHIEF ENGINEER

PRINTED BY THE AUTHORITY
OF THE STATE OF ILLINOIS

INDEX OF SHEETS

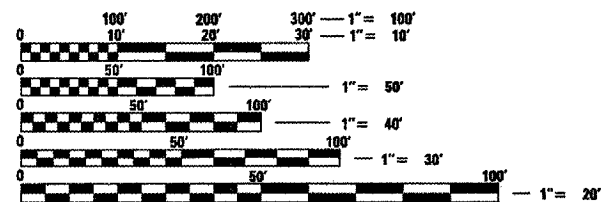
- 1 COVER SHEET
- 2 COMMITMENTS & GENERAL NOTES
- 3 SUMMARY OF QUANTITIES
- 4 TYPICAL SECTIONS
- 5-6 SCHEDULE OF QUANTITIES
- 7-8 STAGING PLANS
- 9 PLAN VIEW
- 10-13 BRIDGE PLANS

LIST OF STANDARDS

- 701011-01 701321-09
- 701006-02 704001-04
- 701301-02 701901
- 701316-03 780001-01
- 781001-02

DESIGN DESIGNATION

- ADT = 5,400 (2007)
- MU = 60
- SU = 200

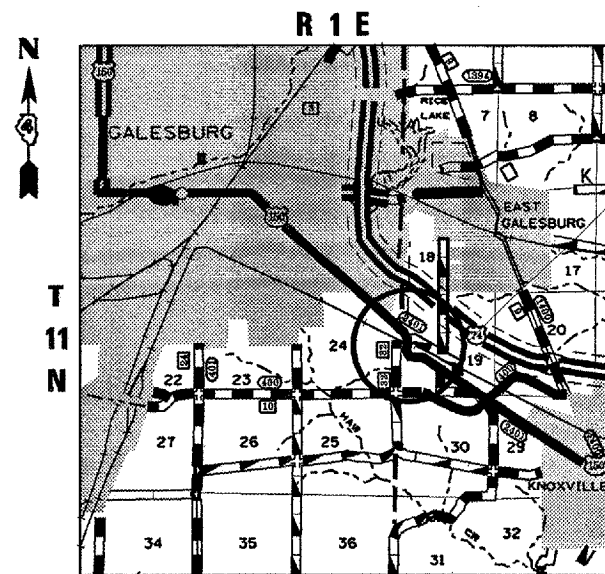


FULL SIZE PLANS HAVE BEEN PREPARED USING STANDARD ENGINEERING SCALES. REDUCED SIZED PLANS WILL NOT CONFORM TO STANDARD SCALES. IN MAKING MEASUREMENTS ON REDUCED PLANS, THE ABOVE SCALES MAY BE USED.

J.U.L.I.E.
 JOINT UTILITY LOCATION INFORMATION FOR EXCAVATION
 1-800-892-0123
 OR 811

PROJECT DESIGNER TERRISA WORSFOLD
 PROJECT MANAGER RICHARD DOTSON

CONTRACT NO. 68780
 CATALOG NO 033712-000



GROSS LENGTH OF PROJECT 680 FT (0.13 MILES)
 NET LENGTH OF PROJECT 680 FT (0.13 MILES)