

STATE OF ILLINOIS
DEPARTMENT OF TRANSPORTATION

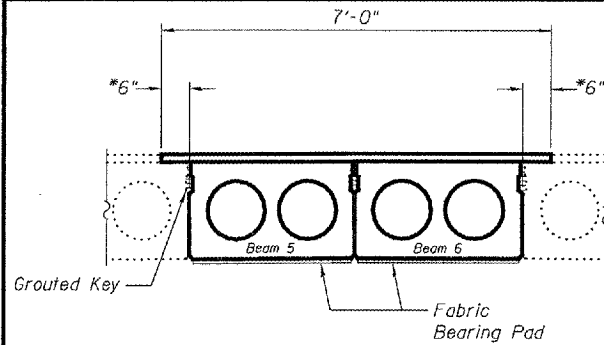
ROUTE NO.	SECTION	COUNTY	SHEET NO.	SHEET NO.
		KNOX	13	12
FED. ROAD DIST. NO. 7		ILLINOIS	FED. AID PROJECT	

SHEET NO. 3
4 SHEETS

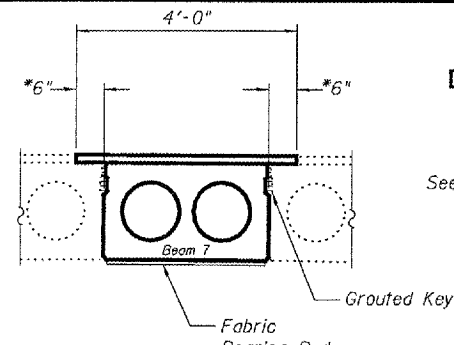
Contract Number: 68780

NOTES

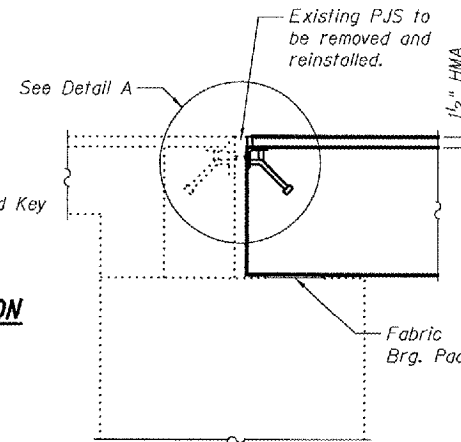
All steel shapes and plates shall conform to the requirements of AASHTO M 270 Grade 36 except posts and angles shall conform to AASHTO M 270, Grade 50.
Bolts, cap screws, and nuts shall conform to the requirements of ASTM designation A 307 except for high strength bolts, nuts and washers noted which shall conform to AASHTO M 164.
All bolts, nuts, cap screws, washers and lock washers shall be galvanized according to AASHTO M 232.
All anchor devices and angles shall be galvanized after shop fabrication according to AASHTO M 111 and ASTM A 385. Galvanized rail shall not be painted.
The lower portion of the post flange in contact with concrete shall receive two coats of asphalt paint conforming to Section 1060.07 Type II or place 1/8" fabric bearing pad between the post and concrete.
The 3/4" high strength bolts used to connect the 6 x 4 x 3/4 angles to the post shall be tightened according to Article 505.04(f)(3) of the Standard Specifications. The 1" high strength bolts connecting the angles to the concrete shall be tightened to a snug fit and given an additional 1/8 turn. The 5/8" cap screws in bottom of posts shall be tightened to a snug fit only.
Cost of the anchorage devices is included with the cost of Precast Prestressed Concrete Deck Beams (21" Depth).



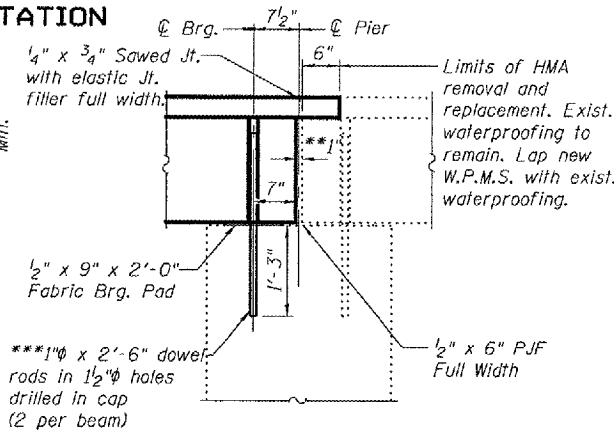
SPAN 1 PARTIAL CROSS SECTION
(Looking South)



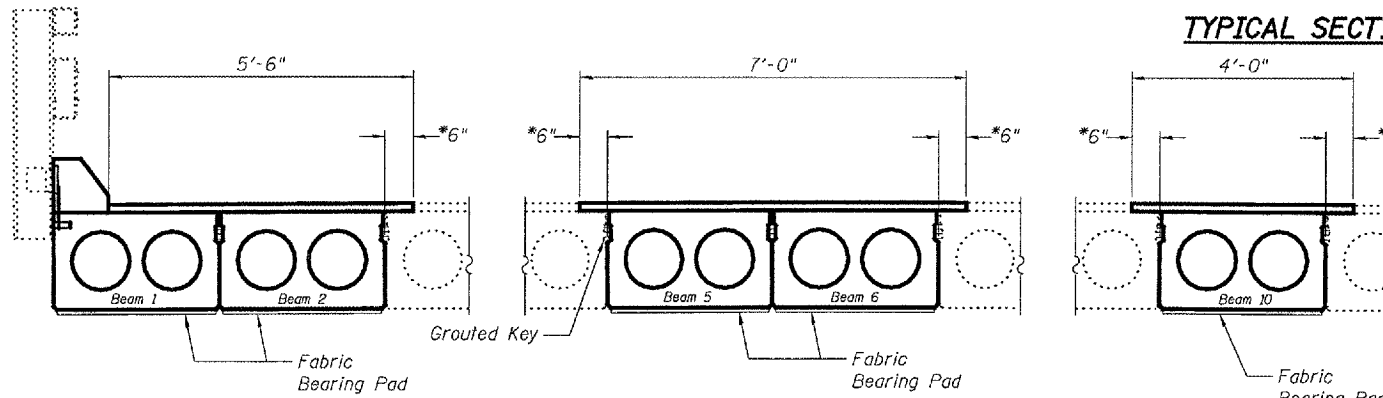
SPAN 3 PARTIAL CROSS SECTION
(Looking South)



TYPICAL SECTION AT ABUTMENT

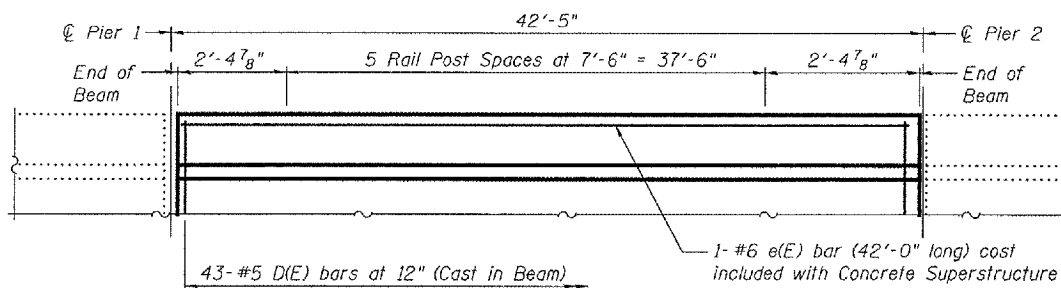
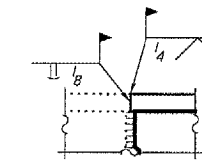


TYPICAL SECTION AT PIER
(Dims are at Rt L's)

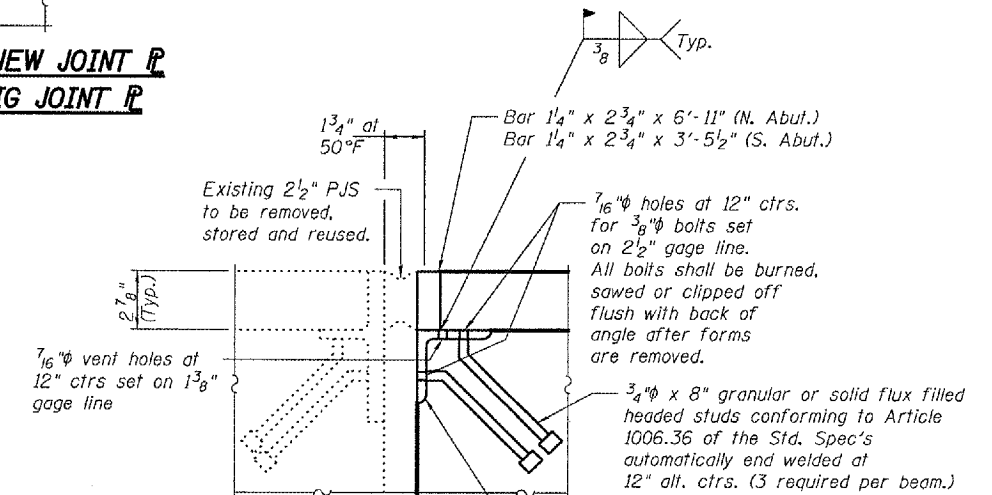


SPAN 2 PARTIAL CROSS SECTION
(Looking South)

ELEVATION NEW JOINT P TO EXISTING JOINT P



SECTION AT RAIL POST



DETAIL A

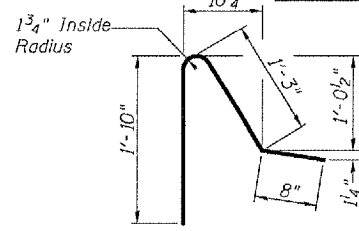
(Cost included with PPC Deck Beams)

*Limits of HMA removal.

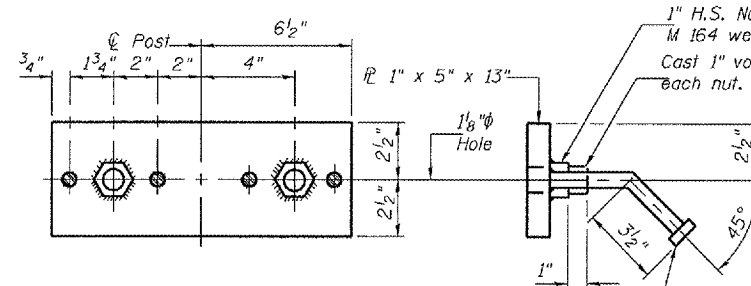
**1" joint shall be filled with non-shrink grout. This dimension may vary plus or minus to accommodate tolerance in beam lengths.

***Existing Dowel Rods shall be cut off and ground flush with the top of the existing concrete. Cost to be included in the cost of Removal of Existing P.P.C. Deck Beams. New Dowel Rods shall be grouted after beams are in place and allowed to cure a Minimum of 24 hours prior to grouting shear keys.

CURB ELEVATION AND RAIL SPACING



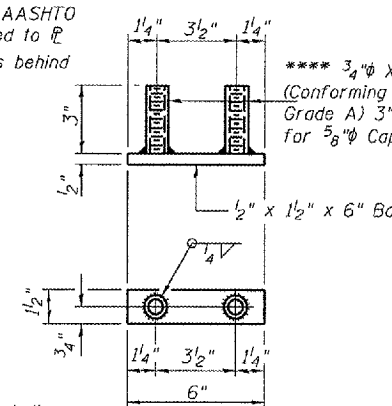
BAR D(E)



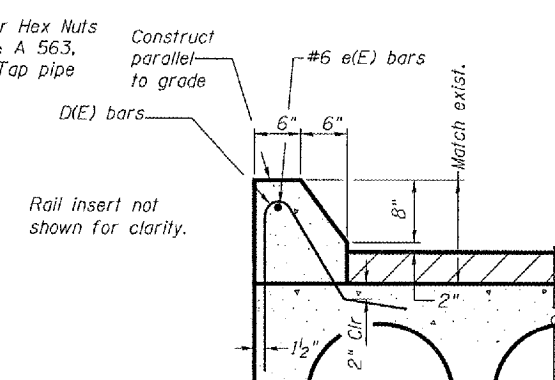
TOP ANCHOR DEVICE

3/4" x 7" Granular or solid flux filled headed studs conforming to Article 1006.32 of the Standard Specification automatically end welded. 4 required per plate.

**** Threaded areas shall be plugged or blocked off during casting of beam.



BOTTOM ANCHOR DEVICE



TYPICAL SECTION THRU CURB

BEAM DETAILS
S.B.I. ROUTE 8
KNOX COUNTY
SN 048-0013

DESIGNED	A.T.H.
CHECKED	A.J.B.
DRAWN	Drew Christopher
CHECKED	A.T.H. A.J.B.

EXAMINED	February 26, 2008
PASSED	<i>Ralph E. Anderson</i> ENGINEER OF BRIDGES AND STRUCTURES