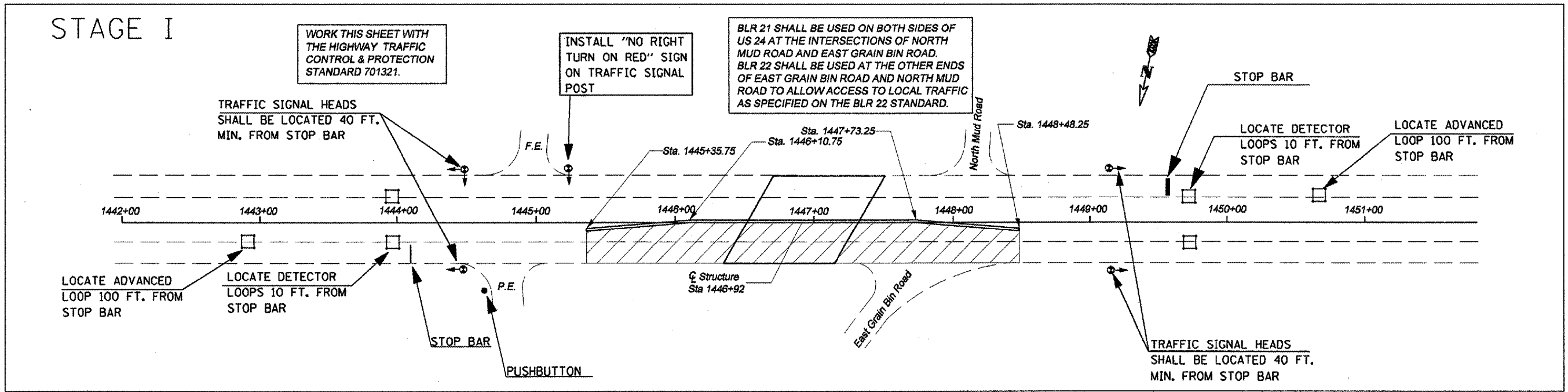
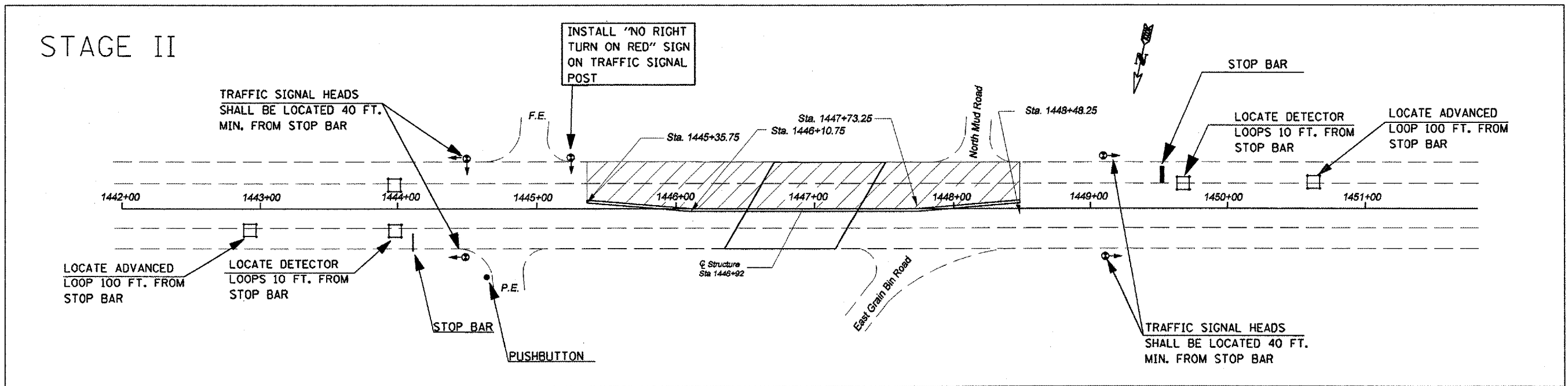


STAGE I

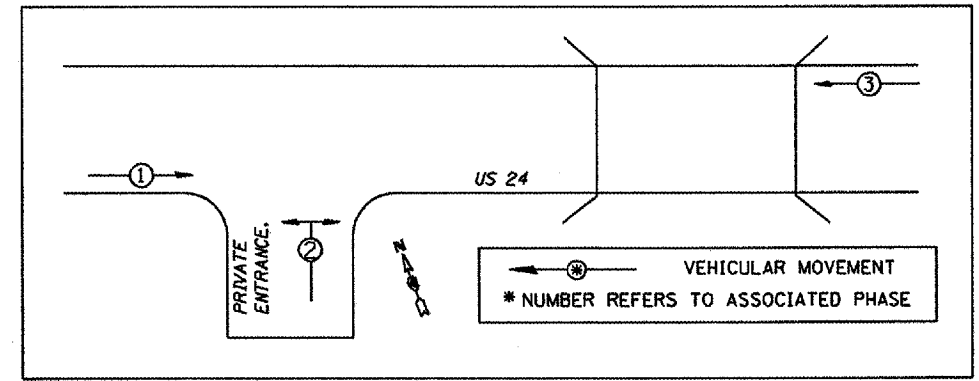


STAGE II



NOT TO SCALE

TEMPORARY PHASE DIAGRAM



PLAN SHEET SCHEDULE OF QUANTITIES		
ITEM DESCRIPTION	UNIT	QUANTITY
TEMPORARY BRIDGE TRAFFIC SIGNAL, SPECIAL	EACH	1.0
TEMPORARY BRIDGE TRAFFIC SIGNAL, RESIDENTIAL APPROACH	EACH	1.0

- LEGEND
- ⊙ TEMPORARY WOOD POLE OR POST
 - 3 SEC. SIGNAL HEAD W/ BACKPLATE
 - DETECTOR LOOP - 6' X 6' UNLESS OTHERWISE NOTED
 - ▨ WORK AREA
 - ▭ TEMPORARY CONCRETE BARRIER

NOTE: ALL ITEMS REQUIRED TO SIGNALIZE THE PRIVATE ENTRANCE SHALL BE INCLUDED IN THE PAY ITEM FOR "TEMPORARY BRIDGE TRAFFIC SIGNALS, RESIDENTIAL APPROACH" INCLUDING, BUT NOT LIMITED TO, SIGNAL HEADS, POSTS, PUSHBUTTON, ELECTRIC CABLE, CABLE SUPPORTS, INTERCONNECT CABLE, CONTROLLER AND CABINET MODIFICATIONS, SIGNING, AND ALL OTHER ITEMS REQUIRED FOR THE INSTALLATION.

- NOTES:
- AT THE CONTRACTOR'S OPTION, TEMPORARY PORTABLE BRIDGE TRAFFIC SIGNALS MAY BE USED IN PLACE OF TEMPORARY BRIDGE TRAFFIC SIGNALS.
 - TRAFFIC CONTROL SHALL BE IN ACCORDANCE WITH STANDARD 701321 EXCEPT WHERE MODIFIED ON THIS PLAN SHEET.
 - THREE PHASE SIGNAL OPERATION IS REQUIRED. THE ENGINEER OF TRAFFIC SHALL APPROVE ALL TIMING PARAMETERS.
 - ALL TRAFFIC SIGNAL SECTIONS SHALL HAVE 12" DIAMETER LENSES.
 - THE LOCATIONS OF TRAFFIC SIGNAL POSTS, STOP BARS, AND DETECTOR LOOPS SHALL BE SUBJECT TO APPROVAL BY THE RESIDENT ENGINEER PRIOR TO INSTALLATION.
 - THE TEMPORARY TRAFFIC SIGNAL INSTALLATION SHALL CONFORM TO ALL APPLICABLE MUTCD REQUIREMENTS.
 - THE CONTRACTOR, AT HIS OPTION, MAY ELECT TO UTILIZE MICROWAVE DETECTORS IN PLACE OF DETECTOR LOOPS FOR BOTH APPROACHES ON US 24.
 - ALL LABOR AND MATERIALS REQUIRED TO COMPLY WITH THESE REQUIREMENTS AND PLAN SHEET DETAILS SHALL BE INCLUDED IN THE PRICE FOR THE TEMPORARY BRIDGE SIGNAL INSTALLATION.

FILE NAME =	USER NAME = jacknw	DESIGNED -	REVISED -
C:\Documents and Settings\jacknw\Desktop\168792 Temp Bridge Signal Detail.dgn		DRAWN -	REVISED -
		CHECKED -	REVISED -

STATE OF ILLINOIS
DEPARTMENT OF TRANSPORTATION

TEMPORARY BRIDGE TRAFFIC SIGNAL DETAIL

F.A.P. RTE.	SECTION	COUNTY	TOTAL SHEETS	SHEET NO.
317	(137-BR-D1-1)	FULTON	12	6

CONTRACT NO. 68782