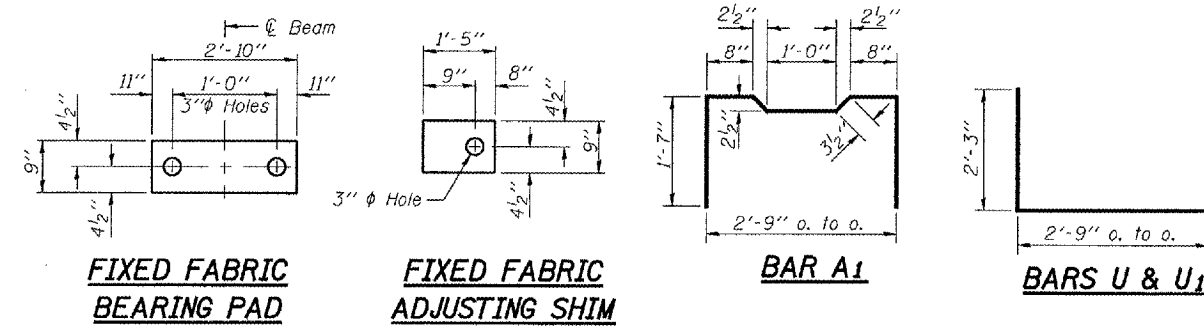


STATE OF ILLINOIS  
DEPARTMENT OF TRANSPORTATION

ROUTE NO.	SECTION	COUNTY	SHEETS	"58"	SHEET NO. 2
SBI 39		PIATT	18	11	5 SHEETS
FED. ROAD DIST. NO. 7	ILLINOIS	FED. AID PROJECT	Contract Number: 70699		

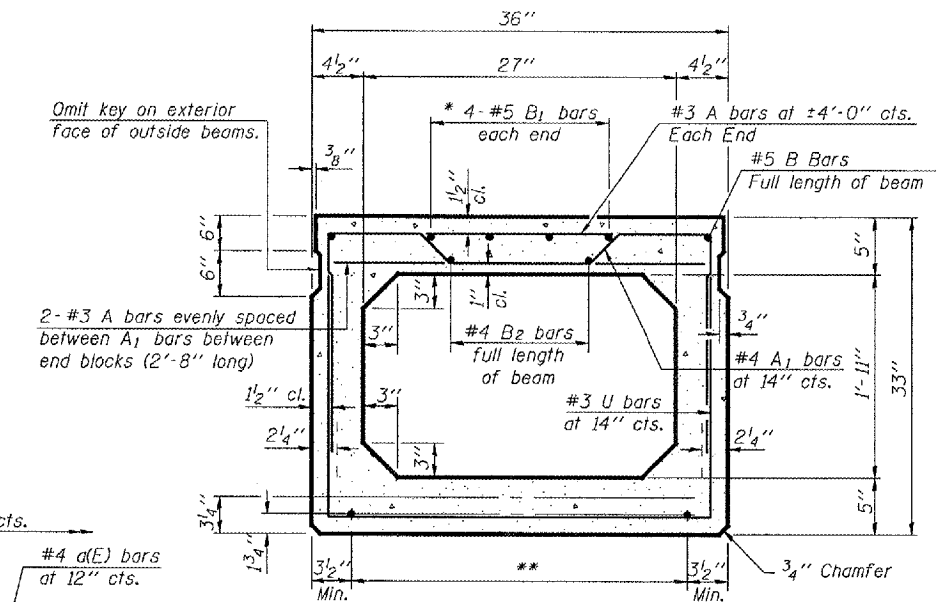


**\*\* TRANSVERSE PLACEMENT GUIDELINES**

1. Place strands symmetrically about centerline of beam.
2. The minimum distance from center to center of strands in all directions shall be 2".
3. The minimum clearance from strand to dowel hole shall be 1/2".
4. The minimum clearance from strand to void shall be 1/2".

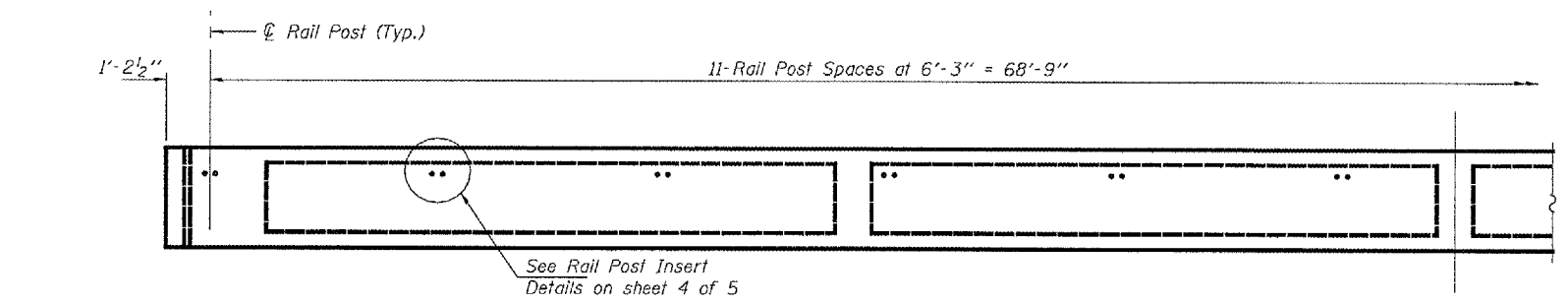
Vertical placement of strands shall not be adjusted to satisfy the above guidelines.

\* 0.2 x Length of beam

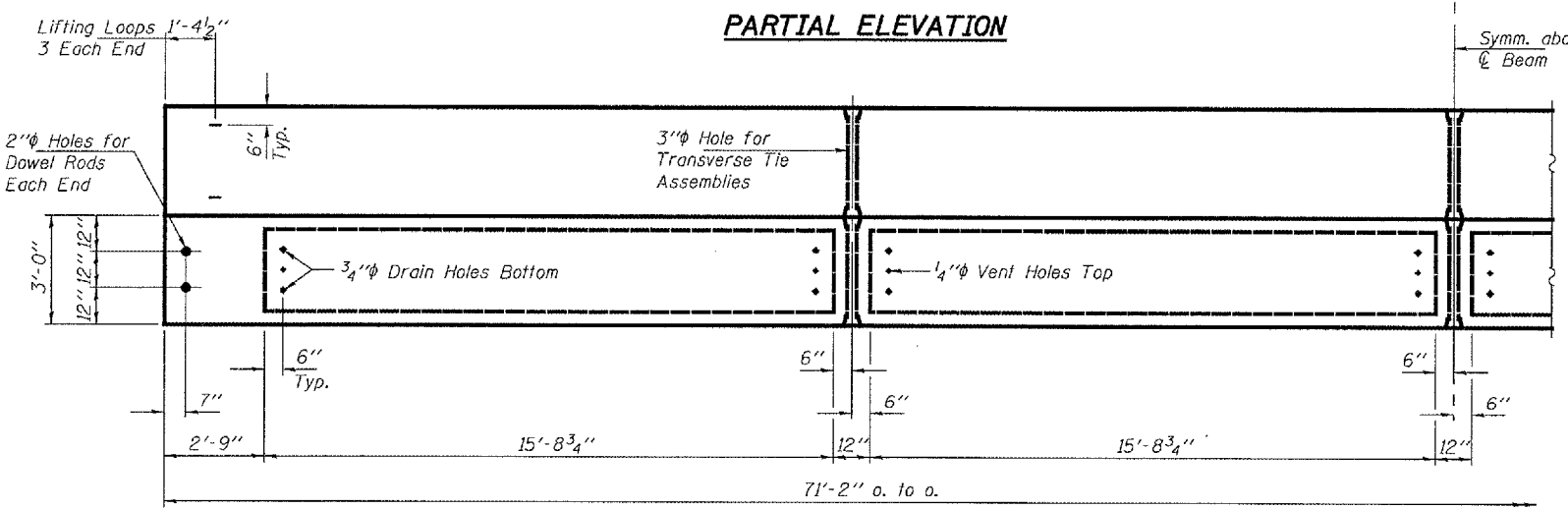


**TYPICAL SECTION**

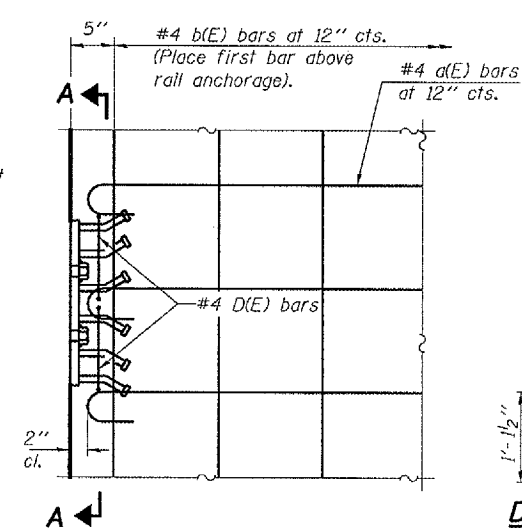
1/2" Strands, Each Strand Stressed to 30,900 Lbs.  
7-Strands 1 3/4" up, 6-Strands 3/4" up, 2-Strands 6" up



**PARTIAL ELEVATION**

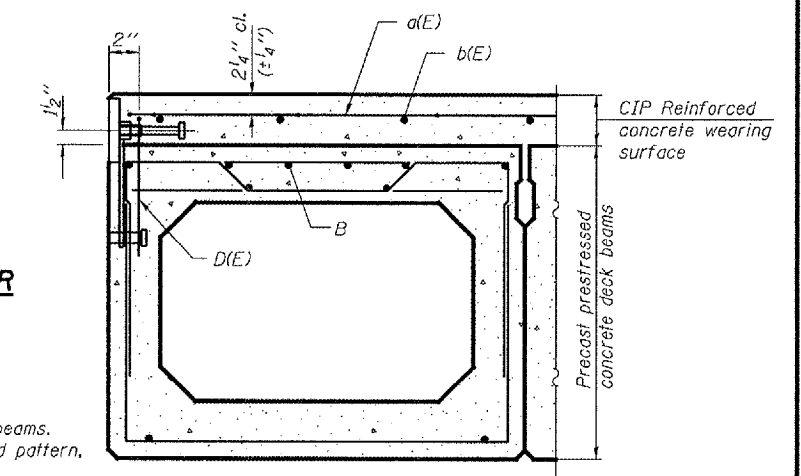


**PARTIAL PLAN**



**PLAN**

**(D)(E) BAR**



**CROSS SECTION**

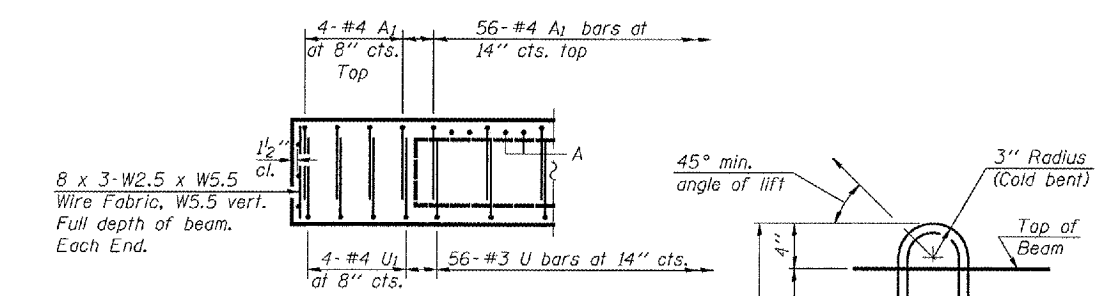
**Note:**  
Rail anchorage shall be cast in precast beams. See typical section for dimensions, strand pattern, and bar callouts not shown.  
Formwork necessary for the wearing surface may be secured utilizing the bottom rail inserts and/or additional inserts cast into the beam. Drilling into the beam will not be permitted.

**NOTES**

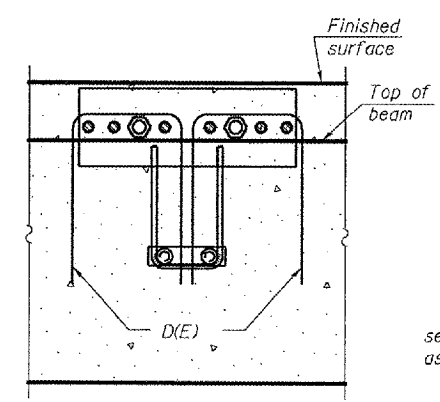
Prestressing steel shall be uncoated high strength, low relaxation 7-wire strand, Grade 270. The nominal diameter shall be 1/2" and the nominal cross-sectional area shall be 0.153 sq. in. Lifting loops shall be 3-1/2" phi-270 ksi strands, as shown.  
The 1" rods in the transverse tie assembly shall be tightened to a snug fit and the threads set. Pockets that receive transverse tie bar on outside shall be filled with grout after transverse tie assembly is in place.  
Non prestressing steel shall conform to ASTM A 706 (IL MOD), Grade 60.  
The bearing seal surfaces shall be adjusted by shimming to assure firm and even bearing. Two 1/8" fabric adjusting shims of the dimensions shown shall be provided for each bearing.  
Keyway surfaces shall be cleaned to remove form oil or other bond breaking material prior to shipment of the beams. Cleaning shall be done by sandblasting the keyway areas between top of the beam and the bottom edge of the key.  
Corrosion Inhibitor, per Article 1020.05(b)(12) of the Standard Specifications, shall be used in the concrete for precast prestressed concrete deck beams.  
Required Release Strength, f'ci, shall be 4000 p.s.i.

**BILL OF MATERIAL**

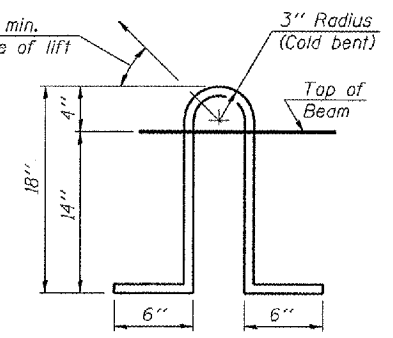
Precast Prestressed Conc. Deck Bms.	Sq. Ft.	854
-------------------------------------	---------	-----



**END ELEVATION**



**SECTION A-A**



**LIFTING LOOP DETAIL**

DESIGNED	AJB
CHECKED	VHV
DRAWN	Steffen
CHECKED	AJB VHV

FEBRUARY 25, 2008  
EXAMINED *Carl Krueger*  
ENGINEER OF STRUCTURAL SERVICES  
PASSED *Ralph E. Anderson*  
ENGINEER OF BRIDGES AND STRUCTURES

**REPAIR DETAILS**  
**SBI 39 OVER**  
**SOUTH BRANCH SALT CREEK**  
**PIATT COUNTY**  
**SN 074-0008**