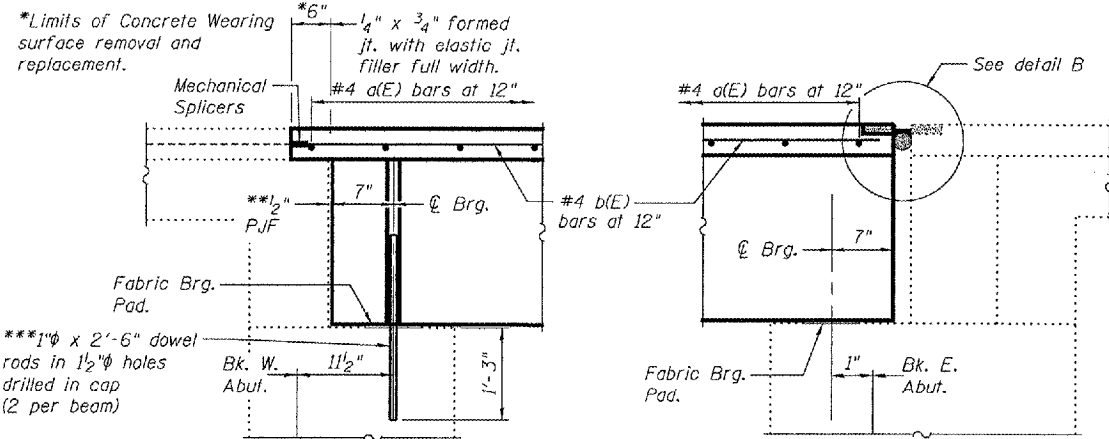


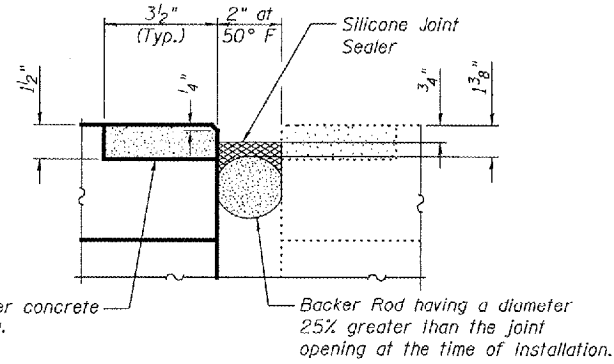
STATE OF ILLINOIS
DEPARTMENT OF TRANSPORTATION

ROUTE NO.	SECTION	COUNTY	DISTRICT	SHEET NO.	SHEET NO. 3 3 SHEETS
745		Pike	7	7	
Contract Number: 72B57					

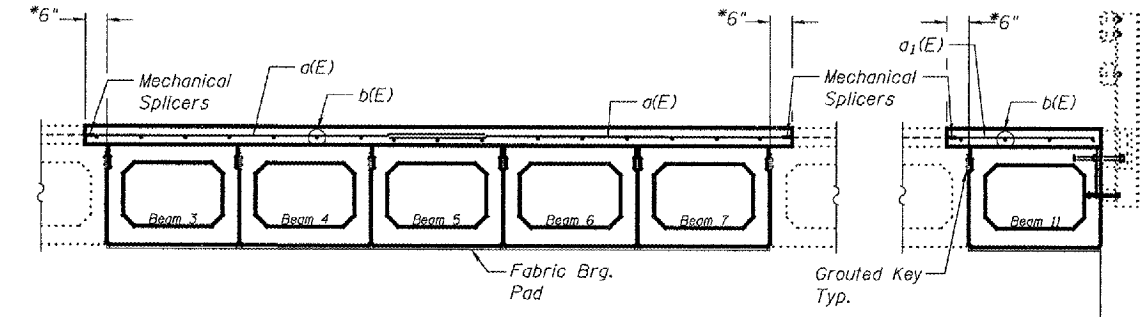


**WEST ABUTMENT
TYPICAL SECTION**
(Dims at Rt. L's)

**EAST ABUTMENT
TYPICAL SECTION**
(Dims at Rt. L's)

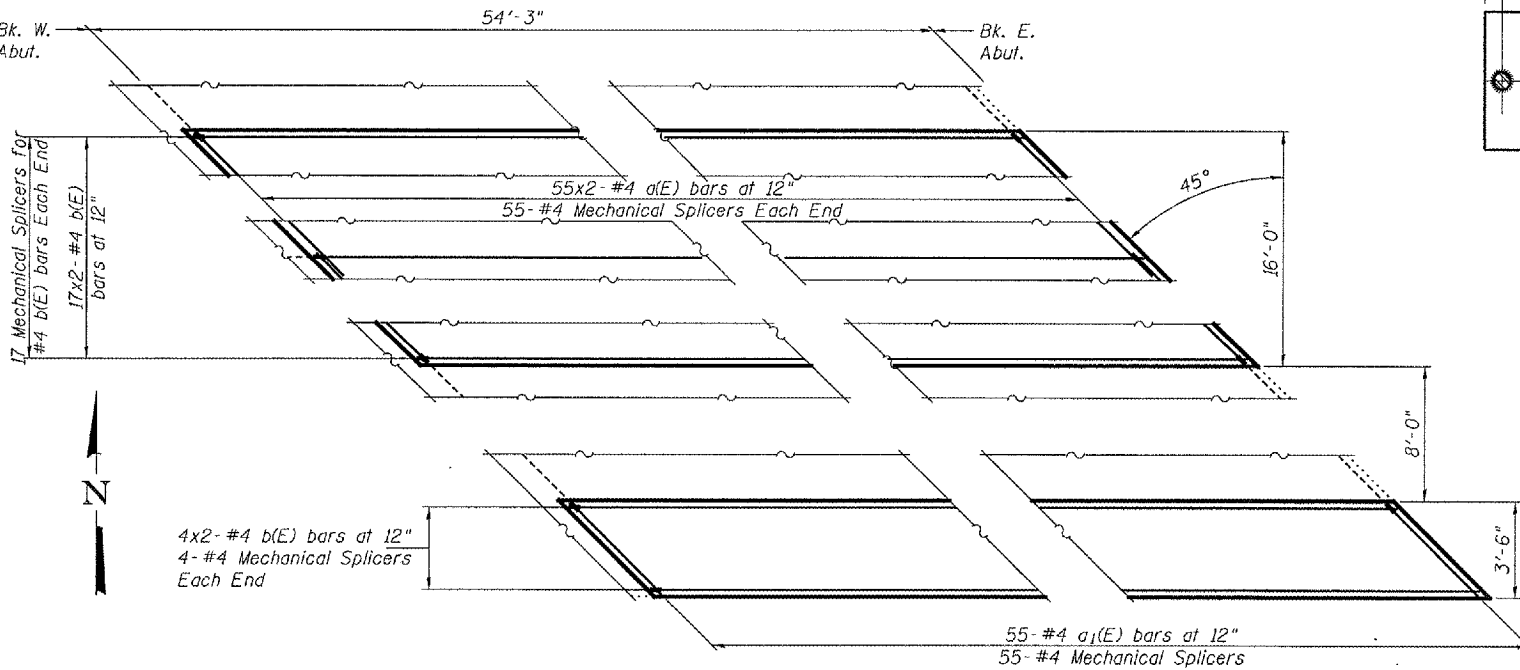


**DETAIL B
TYPICAL SJS JOINT**



PARTIAL DECK CROSS SECTION

**1/2" Joint shall be filled with non-shrink grout. Dimension may vary to accommodate tolerance in beam lengths.
***Existing dowel rods are to be burned off, ground flush, and sealed with epoxy prior to placement of new beams. Cost included in Removal of Existing PPC Deck Beams. After beams have been erected holes shall be drilled into cap and dowel rods placed. Dowel holes shall be filled with non-shrink grout to top of beam and allowed to cure a minimum of 24 hours prior to grouting the shear keys.



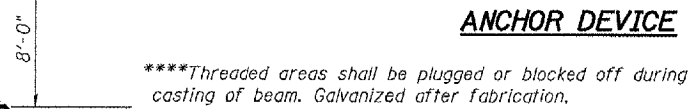
Min. Bar Lap
#4 = 1'-4"

PARTIAL CONCRETE WEARING SURFACE PLAN

BILL OF MATERIAL

Bar	No.	Size	Length	Shape
a(E)	110	#4	12'-0"	—
a1(E)	55	#4	4'-7"	—
b(E)	42	#4	28'-1"	—
Mechanical Splice			Each	207
Concrete Wearing Surface Removal			Sq. Yd.	10.4
Concrete Wearing Surface			Sq. Yd.	117.6
Reinforcement Bars, Epoxy Coated			Pound	1,840

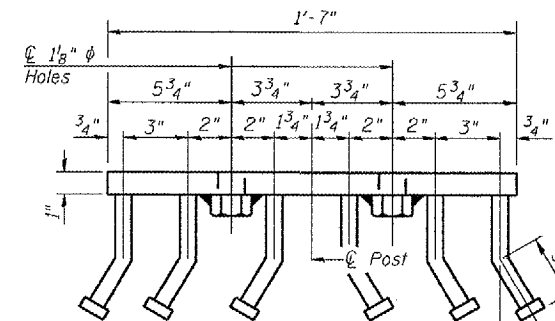
Bars indicated thus 10 x 2-#5 etc. indicates 10 lines of bars with 2 lengths per line.



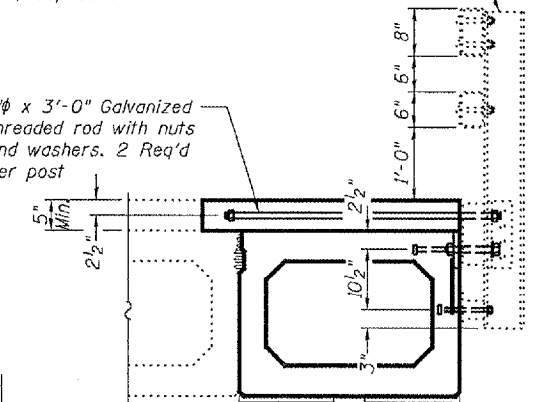
ANCHOR DEVICE

Existing railing to be removed, stored and reinstalled.

1" x 3'-0" Galvanized threaded rod with nuts and washers. 2 Req'd per post



VIEW D-D



**FASCIA BEAM SECTION
SHOWING RAIL**

OVERLAY AND RAIL DETAILS
F.A.P. RT. 745 IL 104
PIKE COUNTY
SN 075-0029

DESIGNED	A.T.H.
CHECKED	V.H.V.
DRAWN	Drew Christopher
CHECKED	A.T.H. V.H.V.

EXAMINED	February 26, 2008
PASSED	Ralph E. Anderson ENGINEER OF BRIDGES AND STRUCTURES