

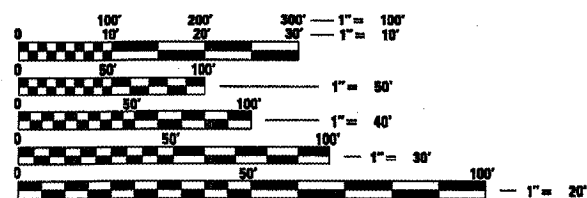
FAP RTE.	SECTION	COUNTY	TOTAL SHEETS	SHEET NO.
663	17N, TS, 1	SANGAMON	25	1
FED. ROAD DIST. NO.		ILLINOIS	CONTRACT NO. 72B75	

INDEX OF SHEETS

- 1 COVER SHEET
- 2 GENERAL NOTES
- 3-7 SUMMARY OF QUANTITIES
- 8, 9 SCHEDULES OF QUANTITIES
- 10 PROJECT LAYOUT SHEET
- 11-13 DETAILED PLAN SHEETS
- 14 ISLANDS LAYOUT SHEET
- 15 ELEVATION DETAIL SHEET
- 16 PAVEMENT MARKING DETAIL SHEET
- 17-21 TRAFFIC SIGNAL SHEETS
- 22-24 DIRKSEN PARKWAY CROSS SECTIONS
- 25 HORIZON DRIVE CROSS SECTIONS

STANDARDS

000001-05	701701-05
353001-04	701801-03
420001-07	701901
420701-02	780001-01
424001-05	857001
542401	873001-01
701101-01	877011-03
701106-01	878001-06
701421-01	880001
701426-02	880006



FULL SIZE PLANS HAVE BEEN PREPARED USING STANDARD ENGINEERING SCALES. REDUCED SIZED PLANS WILL NOT CONFORM TO STANDARD SCALES. IN MAKING MEASUREMENTS ON REDUCED PLANS, THE ABOVE SCALES MAY BE USED.

J.U.L.I.E.
JOINT UTILITY LOCATION INFORMATION FOR EXCAVATION
1-800-892-0123
OR 811

PROJECT ENGINEER: SAL MADONIA (217) 782-4761
PROJECT MANAGER: MARCUS BRUCE (217) 524-0946

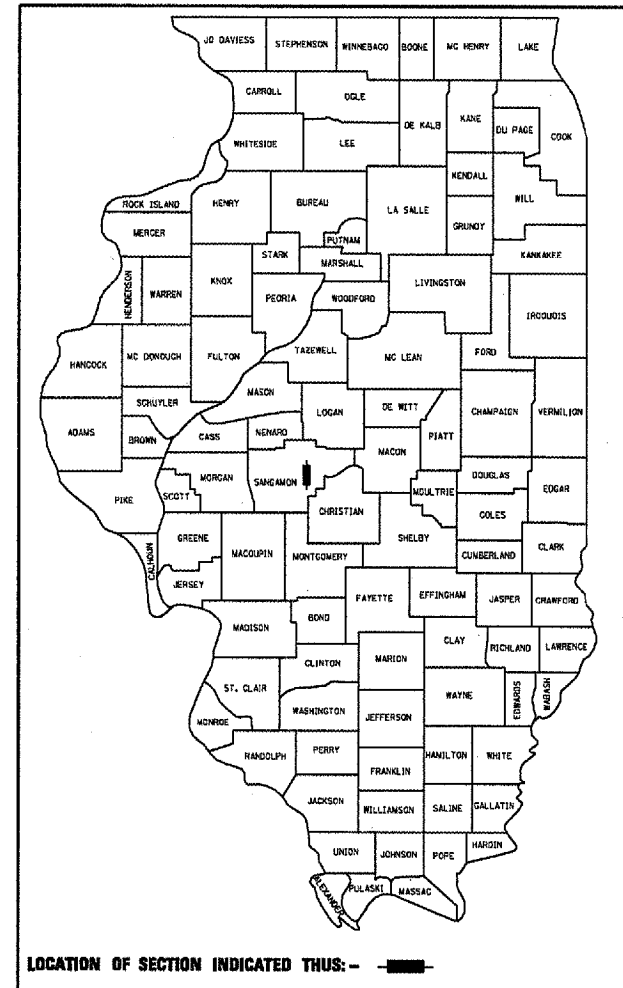
CONTRACT NO. 72B75

STATE OF ILLINOIS DEPARTMENT OF TRANSPORTATION DIVISION OF HIGHWAYS

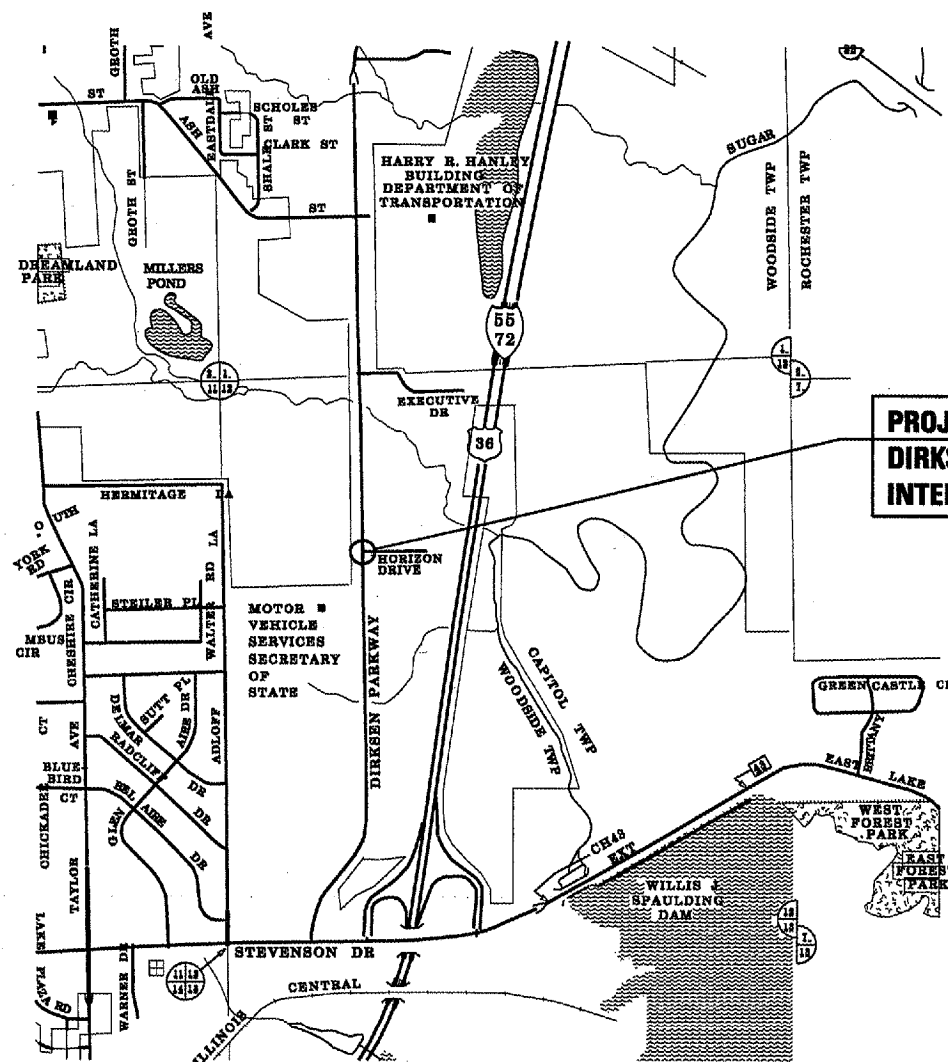
PROPOSED HIGHWAY PLANS

FAP 663 (DIRKSEN PARKWAY)
SECTION 17N, TS, 1
PROJECT NO.
SANGAMON COUNTY
C-96-035-08

D-96-035-08



LOCATION OF SECTION INDICATED THUS: -



PROJECT LOCATION
DIRKSEN PKWY / HORIZON DR
INTERSECTION IMPROVEMENT



STATE OF ILLINOIS
DEPARTMENT OF TRANSPORTATION
DIVISION OF HIGHWAYS

SUBMITTED Feb. 15, 20 08
Christine M. Reed
DEPUTY DIRECTOR OF HIGHWAYS, REGION ENGINEER

March 21, 20 08
Eric E. Harnett
ENGINEER OF DESIGN AND ENVIRONMENT

March 21, 20 08
Christine M. Reed
DIRECTOR OF HIGHWAYS, CHIEF ENGINEER

**PRINTED BY THE AUTHORITY
OF THE STATE OF ILLINOIS**

GENERAL NOTES

1. ANY REFERENCE TO A STANDARD IN THESE PLANS SHALL BE INTERPRETED TO MEAN THE EDITION AS INDICATED BY THE SUB NUMBER LISTED IN THE INDEX OF SHEETS OR THE COPY OF THE STANDARD INCLUDED IN THESE PLANS.
2. IN ADDITION TO FIELD SURVEYS, PLAN DIMENSIONS AND DETAILS RELATIVE TO THE EXISTING FACILITIES HAVE BEEN TAKEN FROM EXISTING PLANS AND ARE SUBJECT TO CONSTRUCTION VARIATIONS. IT SHALL BE THE CONTRACTOR'S RESPONSIBILITY TO VERIFY SUCH DIMENSIONS AND DETAILS IN THE FIELD. SUCH VARIATIONS SHALL NOT BE A CAUSE FOR ADDITIONAL COMPENSATION DUE TO A CHANGE IN THE SCOPE OF WORK, HOWEVER, THE CONTRACTOR WILL BE PAID FOR THE QUANTITY ACTUALLY FURNISHED AT THE UNIT PRICE BID FOR THE WORK.
3. ACCESS TO ALL ENTRANCES AND SIDE ROADS SHALL BE MAINTAINED AT ALL TIMES.
4. THE CONTRACTOR SHALL BE RESPONSIBLE FOR PROTECTING UTILITY PROPERTY FROM CONSTRUCTION OPERATIONS, AS OUTLINED IN ARTICLE 107.31 OF THE STANDARD SPECIFICATIONS, THE J.U.L.I.E. NUMBER IS 1-800-892-0123. A MINIMUM OF 48 HOURS ADVANCE NOTICE IS REQUIRED.
5. THE THICKNESS OF BITUMINOUS MIXTURES SHOWN ON THE PLANS IS THE NOMINAL THICKNESS. DEVIATIONS FROM THE NOMINAL THICKNESS WILL BE PERMITTED WHEN SUCH DEVIATIONS OCCUR DUE TO IRREGULARITIES IN THE EXISTING SURFACE OR BASE ON WHICH THE BITUMINOUS MIXTURE IS PLACED.
6. ALL SAW CUTS, NECESSARY TO COMPLETE THE WORK DETAILED IN THESE PLANS, SHALL BE INCLUDED IN THE COST FOR THE VARIOUS PAY ITEMS INVOLVED.
7. UNLESS DIRECTED BY THE ENGINEER, PAVEMENT MARKING LINES SHALL NOT BE LAID DIRECTLY OVER A LONGITUDINAL CRACK OR JOINT NOR OVER A TAR OR ASPHALT PAINTED LINE. THE EDGE OF A CENTERLINE OR LANE LINE SHALL BE OFFSET A MINIMUM DISTANCE OF 2" FROM A LONGITUDINAL CRACK OR JOINT. EDGE LINES SHALL BE APPROXIMATELY 2" FROM THE EDGE LINE OF PAVEMENT. SEE SECTION 780 OF THE STANDARD SPECIFICATIONS FOR TRAFFIC CONTROL ITEMS.
8. THE FOLLOWING RATES OF APPLICATION HAVE BEEN USED TO CALCULATE THE PLAN QUANTITIES:
 BITUMINOUS MATERIALS (PRIME COAT) 0.00038 TON/SQ. YD. (ON PAVEMENT)
 BITUMINOUS MATERIALS (PRIME COAT) 0.001425 TON/SQ.YD. (ON AGG)
 AGGREGATE PRIME COAT 0.002 TON/SQ. YD.
 BITUMINOUS CONCRETE SURFACE / BINDER 0.056 TON/SQ. YD. PER 1"
 AGGREGATE MATERIAL 2.05 TON/CU. YD.
 MULCH METHOD 2.0 TON/ACRE
 AGRICULTURE GROUND LIMESTONE 2.0 TON/ACRE
 NITROGEN FERTILIZER NUTRIENT 90 LBS./ACRE
 PHOSPHOROUS FERTILIZER NUTRIENT 90 LBS./ACRE
 POTASSIUM FERTILIZER NUTRIENT 90 LBS./ACRE
9. THE EXISTING ROAD SIGNS THAT INTERFERE WITH CONSTRUCTION WILL BE REMOVED OR RELOCATED AS DIRECTED BY THE ENGINEER. AFTER THE CONSTRUCTION IS COMPLETED, THE CONTRACTOR WILL REPLACE THE SIGNS AS DIRECTED BY THE ENGINEER. THIS WORK WILL NOT BE PAID SEPARATELY BUT SHALL BE CONSIDERED INCLUDED IN THE CONTRACT, AND NO COMPENSATION WILL BE ALLOWED.
10. WHERE SECTION OR SUB-SECTION MARKERS ARE ENCOUNTERED, THE ENGINEER SHALL BE NOTIFIED BEFORE SUCH MONUMENTS ARE REMOVED. THE CONTRACTOR SHALL PROTECT AND CAREFULLY PRESERVE ALL PROPERTY MARKERS AND MONUMENTS UNTIL THE OWNER, AN AUTHORIZED AGENT OR LAND SURVEYOR HAS WITNESSED OR OTHERWISE REFERENCED THEIR LOCATION.
11. ALL ELEVATIONS SHOWN ON THE PLANS ARE BASED ON U.S.G.S. MEAN SEA LEVEL DATUM.

THE FOLLOWING MIXTURE REQUIREMENTS ARE APPLICABLE FOR THIS PROJECT:

MIXTURE USE(S):	LEV BIND (MACH METH)	HMA SURF CSE	HMA SHLDRS
ACPG:	PG 64-22	PG 64-22	PG 58-22
DESIGN AIR VOIDS:	4.0% @ N DES=50	4.0% @ N DES=50	2.0% @ N DES=80
MIXTURE COMPOSITION: (GRADATION MIXTURE)	IL9.5	IL 9.5 OR IL 12.5	BAM
FRICTION AGREGATE:	NA	MIX "C"	NA

DISTRICT SIX	
EXAMINED	Feb 15 20 08
<i>[Signature]</i> OPERATIONS ENGINEER	
EXAMINED	2-14-20 08
<i>W. R. Frey</i> PROGRAM IMPLEMENTATION ENGINEER	
EXAMINED	February 14, 20 08
<i>William R. Frey</i> PROGRAM DEVELOPMENT ENGINEER	

SUMMARY OF QUANTITIES					
CODE NO	PAY ITEM	UNITS	URBAN TOTAL QUANTITY	100% STATE QUANTITY	90% STATE 10% CITY QUANTITY
				SFTY-2A	Y031-1F
20200100	EARTH EXCAVATION	CU YD	32	32	
25000200	SEEDING, CLASS 2	ACRE	0.1	0.1	
25000400	NITROGEN FERTILIZER NUTRIENT	POUND	9	9	
25000500	PHOSPOROUS FERTILIZER NUTRIENT	POUND	9	9	
25000600	POTASSIUM FERTILIZER NUTRIENT	POUND	9	9	
25100115	MULCH, METHOD 2	ACRE	0.1	0.1	
31100300	SUB-BASE GRANULAR MATERIAL, TYPE A 4"	SQ YD	468	468	
35300400	PORTLAND CEMENT CONCRETE BASE COURSE 9"	SQ YD	328	328	
40600625	LEVELING BINDER (MACHINE METHOD), N50	TON	15	15	
40603310	HOT-MIX ASPHALT SURFACE COURSE, MIX "C", N50	TON	77	77	
42000300	PORTLAND CEMENT CONCRETE PAVEMENT 8"	SQ YD	159	159	
42400100	PORTLAND CEMENT CONCRETE SIDEWALK 4 INCH	SQ FT	620	620	
42400800	DETECTABLE WARNINGS	SQ FT	80	80	
44000100	PAVEMENT REMOVAL	SQ YD	87	87	
44000155	HOT-MIX ASPHALT SURFACE REMOVAL, 1 1/2"	SQ YD	642	642	
44000500	COMBINATION CURB AND GUTTER REMOVAL	FOOT	447	447	
44000600	SIDEWALK REMOVAL	SQ FT	120	120	
44000920	BITUMINOUS CONCRTE SHOULDER REMOVAL	SQ YD	205	205	

SUMMARY OF QUANTITIES

CODE NO	PAY ITEM	UNITS	URBAN	100% STATE QUANTITY	90% STATE 10% CITY QUANTITY
			TOTAL QUANTITY	SFTY-2A	Y031-1F
44002020	CONCRETE MEDIAN SURFACE REMOVAL	SQ FT	266	266	
48203029	HOT-MIX ASPHALT SHOULDERS, 8"	SQ YD	101	101	
54201483	PIPE CULVERTS, TYPE 2, CORRUGATED STEEL OR ALUMINUM CULVERT PIPE 18"	FOOT	29	29	
54215553	METAL END SECTIONS, 18"	EACH	2	2	
60605000	COMBINATION CONCRETE CURB AND GUTTER, TYPE B-6.24	FOOT	340	340	
60605500	COMBINATION CONCRETE CURB AND GUTTER, TYPE B-6.24 (VARIABLE WIDTH GUTTER FLAG)	FOOT	33	33	
60608600	COMBINATION CONCRETE CURB AND GUTTER, TYPE M-6.06	FOOT	61	61	
60610400	COMBINATION CONCRETE CURB AND GUTTER, TYPE M-6.24	FOOT	60	60	
60610900	COMBINATION CONCRETE CURB AND GUTTER, TYPE M-6.24 (VARIABLE WIDTH GUTTER FLAG)	FOOT	56	56	
67100100	MOBILIZATION	L SUM	1	1	
672000400	ENGINEER'S FIELD OFFICE, TYPE A	CAL MO	2	2	
70100310	TRAFFIC CONTROL AND PROTECTION, STANDARD 701421	L SUM	1	1	
70102635	TRAFFIC CONTROL AND PROTECTION, STANDARD 701701	L SUM	1	1	
70102640	TRAFFIC CONTROL AND PROTECTION, STANDARD 701801	L SUM	1	1	
70103815	TRAFFIC CONTROL SURVEILLANCE	CAL DA	5	5	
78000300	THERMOPLASTIC PAVEMENT MARKING - LINE 5"	FOOT	458	458	
* 78000400	THERMOPLASTIC PAVEMENT MARKING - LINE 6"	FOOT	345	345	
* 78000500	THERMOPLASTIC PAVEMENT MARKING - LINE 8"	FOOT	352	352	
* 78000600	THERMOPLASTIC PAVEMENT MARKING - LINE 12"	FOOT	127	127	

* SPECIALTY ITEMS

SUMMARY OF QUANTITIES

CODE NO	PAY ITEM	UNITS	TOTAL QUANTITY	URBAN	100% STATE QUANTITY	90% STATE 10% CITY QUANTITY
					SFTY-2A	Y031-1F
87301525	ELECTRIC CABLE IN CONDUIT, LEAD-IN, NO. 18 6 PAIR	FOOT	303.5			303.5
87301805	ELECTRIC CABLE IN CONDUIT, SERVICE, NO. 6 2C	FOOT	15			15
87502700	TRAFFIC SIGNAL POST, ALUMINUM 16 FT.	EACH	2			2
87702910	STEEL COMBINATION MAST ARM ASSEMBLY AND POLE 36 FT.	EACH	1			1
87702920	STEEL COMBINATION MAST ARM ASSEMBLY AND POLE 38 FT.	EACH	1			1
87800100	CONCRETE FOUNDATION, TYPE A	FOOT	6			6
87800200	CONCRETE FOUNDATION, TYPE D	FOOT	3.5			3.5
87800415	CONCRETE FOUNDATION, TYPE E 36-INCH DIAMETER	FOOT	22			22
87900200	DRILL EXISTING HANDHOLE	EACH	1			1
* 88040090	SIGNAL HEAD, POLYCARBONATE, LED, 1-FACE, 3-SECTION, MAST ARM MOUNTED	EACH	2			2
88040120	SIGNAL HEAD, POLYCARBONATE, LED, 1-FACE, 4-SECTION, MAST ARM MOUNTED	EACH	1			1
88040320	SIGNAL HEAD, POLYCARBONATE, LED, 3-FACE, 1-4 SECTION, 2-5-SECTION, BRACKET MOUNTED	EACH	1			1
88040360	SIGNAL HEAD, POLYCARBONATE, LED, 3-FACE, 5-SECTION, BRACKET MOUNTED	EACH	1			1
88102810	PEDESTRIAN SIGNAL HEAD, POLYCARBONATE, LED, 1-FACE, BRACKET MOUNTED	EACH	2			2
88102830	PEDESTRIAN SIGNAL HEAD, POLYCARBONATE, LED, 2-FACE, BRACKET MOUNTED	EACH	2			2
88200100	TRAFFIC SIGNAL BACKPLATE	EACH	7			7
88800100	PEDESTRIAN PUSH-BUTTON	EACH	6			6
89000100	TEMPORARY TRAFFIC SIGNAL INSTALLATION	EACH	1			1
89502200	MODIFY EXISTING CONTROLLER	EACH	1			1

* SPECIALTY ITEMS

FILE NAME *	USER NAME *	DESIGNED -	REVISED -	STATE OF ILLINOIS DEPARTMENT OF TRANSPORTATION	SUMMARY OF QUANTITIES	F.A.P. RTE.	SECTION	COUNTY	TOTAL SHEETS	SHEET NO.	
ct:\projects\0803508\shstoa.dgn	loughlinr1	DRAWN -	REVISED -			663	17N, TS, I	SANGAMON	25	6	
PLOT SCALE = 100.0000' / IN.	CHECKED -	DATE	REVISED -			CONTRACT NO. 72B75					
PLOT DATE = Feb-21-2008 01:52:39PM	DATE	02-19-08	REVISED -			SCALE:	SHEET NO. 4 OF 5 SHEETS	STA.	TO STA.	FED. ROAD DIST. NO.	ILLINOIS FED. AID PROJECT

COMBINATION CURB @ GUTTER REMOVAL	
LOCATION	NEEDED LENGTH (FT)
SOUTHEAST QUADRANT RADIUS	252.0
SOUTHEAST QUADRANT ISLAND	43.0
NORTHEAST QUADRANT RADIUS	87.7
NORTHEAST QUADRANT ISLAND	50.0
NORTHWEST QUADRANT ISLAND	7.0
SOUTHWEST QUADRANT ISLAND	7.0
TOTAL = 446.7 FT	

CONCRETE MEDIAN SURFACE REMOVAL	
LOCATION	NEEDED QUANTITY (SQ FT)
SOUTHEAST QUADRANT ISLAND	75.0
NORTHEAST QUADRANT ISLAND	100.3
SOUTHWEST QUADRANT ISLAND	42.6
NORTHWEST QUADRANT ISLAND	48.0
TOTAL = 265.9 SQ FT	

BITUMINOUS CONCRETE SHOULDER REMOVAL	
LOCATION	NEEDED QUANTITY (SQ YD)
STA. 36+79.13 TO STA. 38+10.50	120.2
STA. 40+99.48 TO STA. 41+77.92	84.4
TOTAL = 204.6 SQ YD	

PAVEMENT REMOVAL	
LOCATION	NEEDED QUANTITY (SQ YD)
SOUTHEAST QUADRANT ISLAND	40.5
NORTHEAST QUADRANT ISLAND	46.7
TOTAL = 87.2 SQ YD	

SIDEWALK REMOVAL	
LOCATION	NEEDED QUANTITY (SQ FT)
SOUTHEAST QUADRANT RADIUS	54.1
NORTHEAST QUADRANT RADIUS	65.3
TOTAL = 119.4 SQ FT	

SUB-BASE GRANULAR MATERIAL TYPE A, 4"	
LOCATION	NEEDED QUANTITY (SQ YD)
SOUTHEAST QUADRANT RADIUS	282.0
SOUTHEAST QUADRANT ISLAND	40.5
NORTHEAST QUADRANT RADIUS	98.3
NORTHEAST QUADRANT ISLAND	46.7
TOTAL = 467.5 SQ YD	

P.C.C. BASE COURSE, 7"	
LOCATION	NEEDED QUANTITY (SQ YD)
SOUTHEAST QUADRANT RADIUS	55.5
NORTHEAST QUADRANT RADIUS	83.3
TOTAL = 138.8 SQ YD	

P.C.C. PAVEMENT 8"	
LOCATION	NEEDED QUANTITY (SQ YD)
SOUTHEAST QUADRANT TURN LANE	159.0
TOTAL = 159.0 SQ YD	

CONCRETE MEDIAN SURFACE, 4"	
LOCATION	NEEDED QUANTITY (SQ FT)
SOUTHEAST QUADRANT ISLAND	92.3
NORTHEAST QUADRANT ISLAND	111.7
TOTAL = 204.0 SQ FT	

PCC SIDEWALK, 4 INCH	
LOCATION	NEEDED QUANTITY (SQ FT)
SOUTHEAST QUADRANT ISLAND	95.9
SOUTHEAST QUADRANT RADIUS	168.0
NORTHEAST QUADRANT ISLAND	98.9
NORTHEAST QUADRANT RADIUS	176.6
SOUTHWEST QUADRANT ISLAND	33.5
NORTHWEST QUADRANT ISLAND	36.4
TOTAL = 620.1 SQ FT	

COMBINATION CONCRETE CURB @ GUTTER, TYPE M-6.06	
LOCATION	NEEDED LENGTH (FT)
SOUTHEAST QUADRANT ISLAND	28.9
NORTHEAST QUADRANT ISLAND	32.4
TOTAL = 61.3 FEET	

COMBINATION CONCRETE CURB @ GUTTER, TYPE M-6.24	
LOCATION	NEEDED LENGTH (FT)
SOUTHEAST QUADRANT ISLAND	23.9
NORTHEAST QUADRANT ISLAND	21.5
SOUTHWEST QUADRANT ISLAND	7.0 *
NORTHWEST QUADRANT ISLAND	7.0 *
*--DEPRESSED CURB & GUTTER TOTAL = 59.4 FEET	

COMBINATION CONCRETE CURB @ GUTTER, TYPE M-6.24 (VARIABLE WIDTH GUTTER FLAG)	
LOCATION	NEEDED LENGTH (FT)
SOUTHEAST QUADRANT ISLAND	24.3
NORTHEAST QUADRANT ISLAND	31.7
TOTAL = 56.0 FEET	

COMBINATION CONCRETE CURB @ GUTTER, TYPE B-6.24	
LOCATION	NEEDED LENGTH (FT)
SOUTHEAST QUADRANT RADIUS	260.8
NORTHEAST QUADRANT RADIUS	79.4
TOTAL = 340.2 FEET	

COMBINATION CONCRETE CURB @ GUTTER, TYPE B-6.24 (VARIABLE WIDTH GUTTER FLAG)	
LOCATION	NEEDED LENGTH (FT)
SOUTHEAST QUADRANT RADIUS ALONG DIRKSEN PKWY. STA. 37+39.81 TO STA. 37+55.98	16.2
NORTHEAST QUADRANT RADIUS ALONG DIRKSEN PKWY. STA. 41+23.21 TO STA. 41+39.71	16.5
TOTAL = 32.7 FEET	

HOT-MIX ASPHALT SHOULDERS, 8"	
LOCATION	NEEDED QUANTITY (SQ YD)
STA. 36+79.13 TO STA. 37+39.81	53.1
STA. 41+39.71 TO STA. 41+77.92	47.6
TOTAL = 100.7 SQ YD	

THERMOPLASTIC PAVEMENT MARKING - LINE 5"		
LOCATION (STATION RANGE)	DESCRIPTION	QUANTITY (FOOT)
DIRKSEN PARKWAY:		
36+79.13 TO 37+56.06	RIGHT EDGE LINE - WHITE	76.9
41+24.02 TO 41+77.92	RIGHT EDGE LINE - WHITE	53.9
HORIZON DRIVE:		
10+57.95 TO 12+21.31 (DOUBLE LINES)	CENTER LINE - YELLOW	326.7
TOTAL = 457.5 FEET		

PREFORMED PLASTIC PAVEMENT MARKING - LINE 6"		
LOCATION (STATION RANGE)	DESCRIPTION	QUANTITY (FOOT)
DIRKSEN PARKWAY:		
40+10, TRAFFIC CROSSWALKS	SOLID LINE - WHITE	169.0
40+60, TRAFFIC CROSSWALKS	SOLID LINE - WHITE	169.0
HORIZON DRIVE:		
EAST / WEST TRAFFIC CROSSWALKS	SOLID LINE - WHITE	60.0
EASTBOUND TURN LANE CROSSWALKS	SOLID LINE - WHITE	46.0
WESTBOUND TURN LANE CROSSWALKS	SOLID LINE - WHITE	44.6
TOTAL = 488.6 FEET		

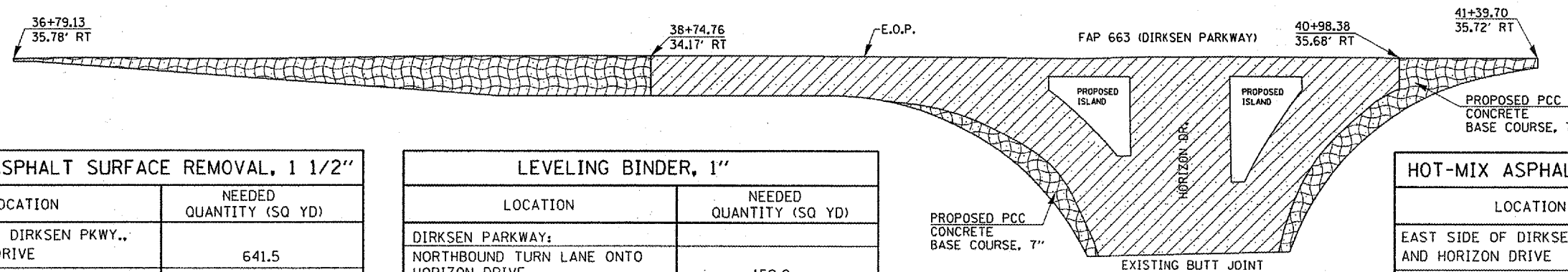
THERMOPLASTIC PAVEMENT MARKING - LINE 6"		
LOCATION (STATION RANGE)	DESCRIPTION	QUANTITY (FOOT)
DIRKSEN PARKWAY:		
36+79.13 TO 38+28.69 (LANE LINE)	2' DASH / 6' SKIP - WHITE	36.3
38+28.69 TO 39+64.84 (LANE LINE)	SOLID LINE - WHITE	136.2
39+84.00 TO 39+96.67 (LANE LINE)	SOLID LINE - WHITE	12.7
40+76.05 TO 41+03.29 (LANE LINE)	SOLID LINE - WHITE	27.3
HORIZON DRIVE:		
10+88.43 TO 12+21.31 (LANE LINE)	SOLID LINE - WHITE	132.9
TOTAL = 345.4 FEET		

PREFORMED PLASTIC PAVEMENT MARKING - LINE 24"		
LOCATION (STATION RANGE)	DESCRIPTION	QUANTITY (FOOT)
DIRKSEN PARKWAY:		
NORTHBOUND TRAFFIC LANES	SOLID LINE - WHITE	24.6
SOUTHBOUND TRAFFIC LANES	SOLID LINE - WHITE	25.4
HORIZON DRIVE:		
WESTBOUND TRAFFIC LANE	SOLID LINE - WHITE	12.0
TOTAL = 62.0 FEET		

THERMOPLASTIC PAVEMENT MARKING - LINE 8"		
LOCATION (STATION RANGE)	DESCRIPTION	QUANTITY (FOOT)
SOUTHEAST QUADRANT ISLAND OUTLINES		
	SOLID LINE - WHITE	187.0
NORTHEAST QUADRANT ISLAND OUTLINES		
	SOLID LINE - WHITE	165.0
TOTAL = 352.0		

PREFORMED PLASTIC PAVEMENT MARKING - LETTERS & SYMBOLS		
LOCATION (STATION RANGE)	DESCRIPTION	QUANTITY (SQ FT)
DIRKSEN PARKWAY:		
NORTHBOUND TURN LANE ONTO HORIZON DR.	ARROW - WHITE (15.6 SQ FT)	31.2
HORIZON DRIVE:		
WESTBOUND TURN LANE ONTO DIRKSEN PKWY.	ARROW - WHITE (15.6 SQ FT)	31.2
TOTAL = 62.4 SQ FT		

THERMOPLASTIC PAVEMENT MARKING - LINE 12"		
LOCATION (STATION RANGE)	DESCRIPTION	QUANTITY (FOOT)
SOUTHEAST QUADRANT ISLAND DIAGONALS		
	SOLID LINE - WHITE	76.0
NORTHEAST QUADRANT ISLAND DIAGONALS		
	SOLID LINE - WHITE	51.2
TOTAL = 127.2		



HOT-MIX ASPHALT SURFACE REMOVAL, 1 1/2"	
LOCATION	NEEDED QUANTITY (SQ YD)
EAST SIDE OF DIRKSEN PKWY., ON HORIZON DRIVE	641.5
TOTAL = 641.5 SQ YD	

LEVELING BINDER, 1"	
LOCATION	NEEDED QUANTITY (SQ YD)
DIRKSEN PARKWAY:	
NORTHBOUND TURN LANE ONTO HORIZON DRIVE	159.0
HORIZON DRIVE:	
SOUTHEAST QUADRANT	37.8
NORTHEAST QUADRANT	73.4
TOTAL = 270.2 SQ YD (15.1 TONS)	

HOT-MIX ASPHALT SURFACE COURSE, 1 1/2"	
LOCATION	NEEDED QUANTITY (SQ YD)
EAST SIDE OF DIRKSEN PKWY. AND HORIZON DRIVE	910.7
TOTAL = 910.7 SQ YD (76.5 TONS)	

- PROPOSED HOT-MIX ASPHALT SURFACE REMOVAL, 1 1/2"
- PROPOSED LEVELING BINDER, 1"
- PROPOSED HOT-MIX ASPHALT SURFACE COURSE, 1 1/2"

PROPOSED CONCRETE MEDIAN SURFACE REMOVAL
TOTAL = 37.27 SQ FT

PROPOSED PCC SIDEWALK, 4" (TOTAL = 33.53 SQ FT) WITH 6" SIDEWALK CURBING AND 3/4" HOT-MIX ASPHALT SURFACE

PROPOSED DETECTABLE WARNINGS (TOTAL = 10.00 SQ FT)

PROPOSED COMBINATION CONCRETE CURB & GUTTER REMOVAL TOTAL = 7.00'

PROPOSED COMBINATION CONCRETE CURB & GUTTER, M-6.24 (DEPRESSED) TOTAL = 7.00'

SOUTHWEST ISLAND DETAIL

PROPOSED CONCRETE MEDIAN SURFACE REMOVAL
TOTAL = 43.58 SQ FT

PROPOSED PCC SIDEWALK, 4" (TOTAL = 36.43 SQ FT) WITH 6" SIDEWALK CURBING AND 3/4" HOT-MIX ASPHALT SURFACE

PROPOSED DETECTABLE WARNINGS (TOTAL = 10.00 SQ FT)

PROPOSED COMBINATION CONCRETE CURB & GUTTER REMOVAL TOTAL = 7.00'

PROPOSED COMBINATION CONCRETE CURB & GUTTER, M-6.24 (DEPRESSED) TOTAL = 7.00'

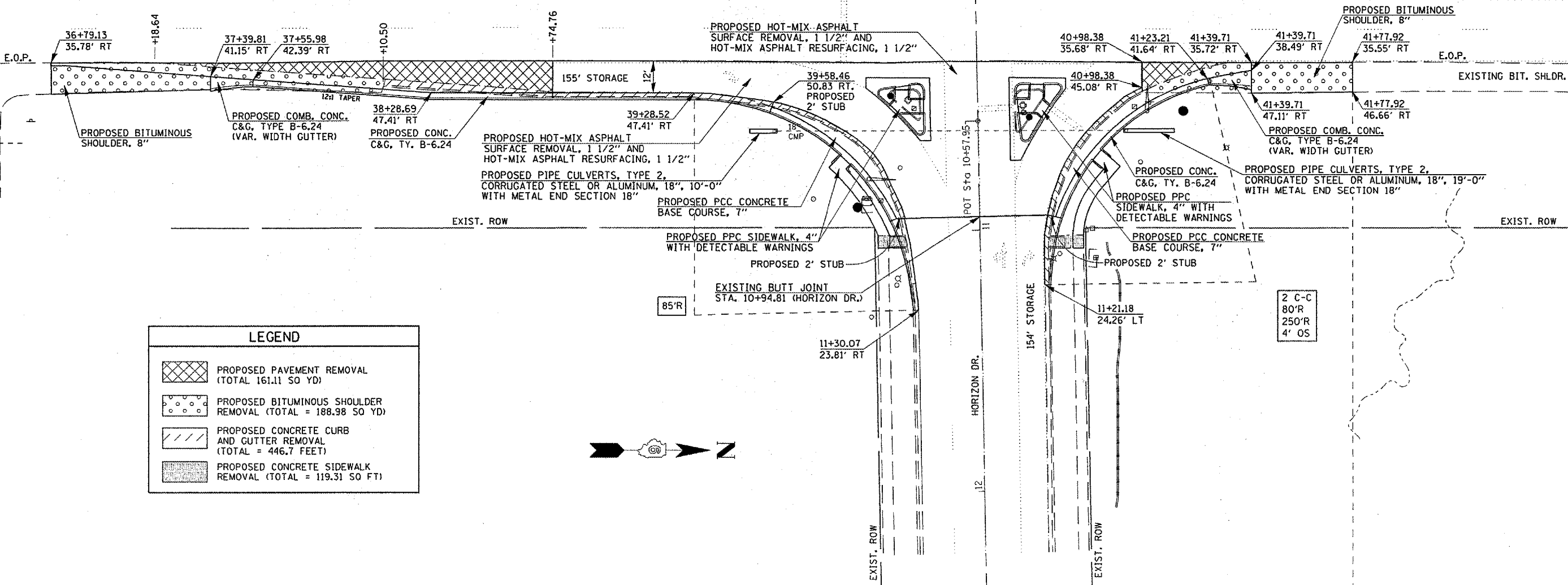
NORTHWEST ISLAND DETAIL

STATION EQUATION:
P.T. STA. 37+85.06 BACK =
P.O.T. STA. 37+90.25 AHEAD

SEE CONSTRUCTION DETAIL ABOVE

STA 40+34.914 DIRKSEN PARKWAY =
STA 10+00.00 HORIZON DRIVE

FAP 663 (DIRKSEN PARKWAY) 37 38 39 40+00 41 42
POT Sta 10+00.00
91°03'15"



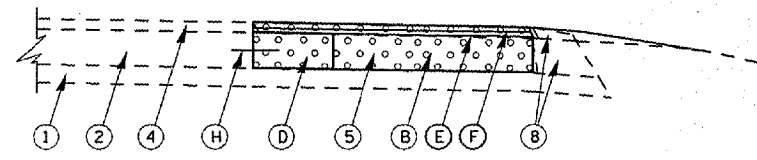
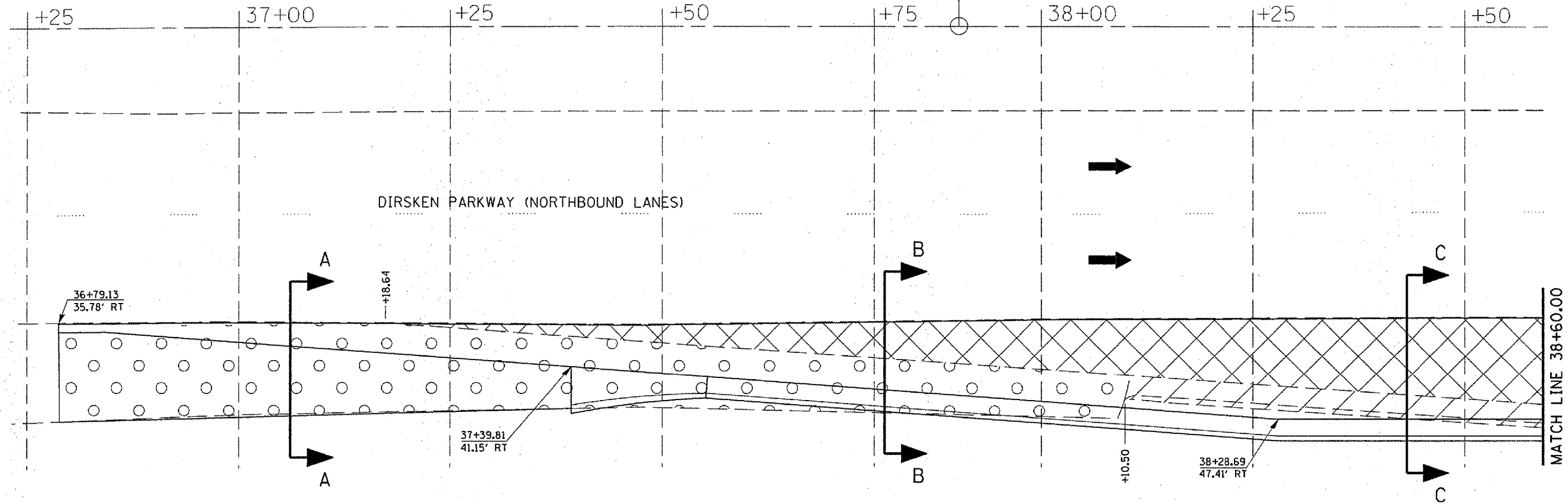
LEGEND

- PROPOSED PAVEMENT REMOVAL (TOTAL 161.11 SQ YD)
- PROPOSED BITUMINOUS SHOULDER REMOVAL (TOTAL = 188.98 SQ YD)
- PROPOSED CONCRETE CURB AND GUTTER REMOVAL (TOTAL = 446.7 FEET)
- PROPOSED CONCRETE SIDEWALK REMOVAL (TOTAL = 119.31 SQ FT)

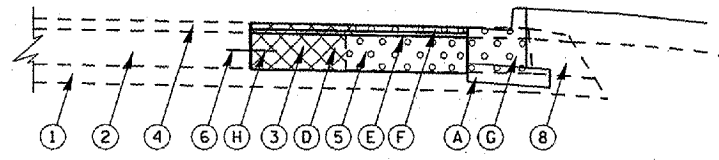


FILE NAME = c:\p\proj\663\663\663\663\plan.dgn	USER NAME = jaughlinr1	DESIGNED - RTS	REVISED -	STATE OF ILLINOIS DEPARTMENT OF TRANSPORTATION	PROJECT LAYOUT SHEET			F.A.P. RTE. 663	SECTION 17N, TS, I	COUNTY SANGAMON	TOTAL SHEETS 25	SHEET NO. 10
PLOT SCALE = 40,0000' / IN.	CHECKED - MEB	REVISIONS	REVISIONS		SCALE: 1/2" = 1'	SHEET NO. 1 OF 1 SHEETS	STA. TO STA.	CONTRACT NO. 72B75				
PLOT DATE = Feb-20-2008 11:33:03AM	DATE - 2/19/08	REVISIONS	REVISIONS		FED. ROAD DIST. NO. ILLINOIS FED. AID PROJECT							

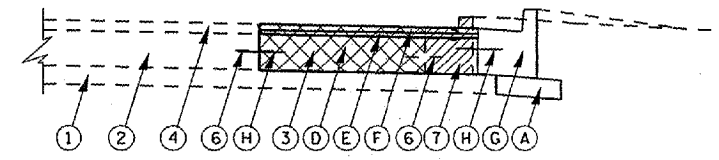
STATION EQUATION:
P.T. STA. 37+85.06 BACK =
P.O.T. STA. 37+90.25 AHEAD



SECTION A-A

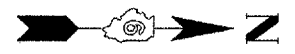


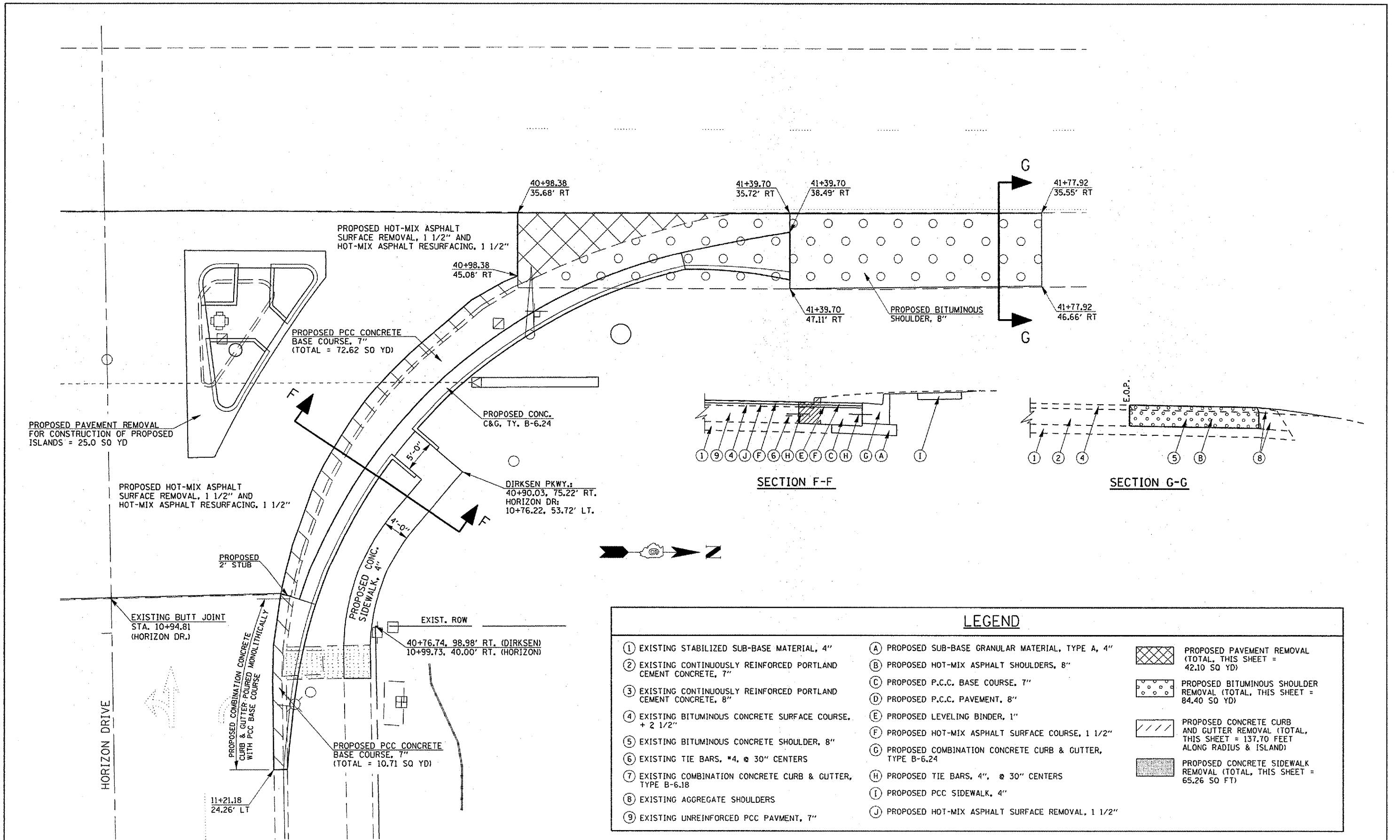
SECTION B-B



SECTION C-C

LEGEND		
① EXISTING STABILIZED SUB-BASE MATERIAL, 4"	Ⓐ PROPOSED SUB-BASE GRANULAR MATERIAL, TYPE A, 4"	PROPOSED PAVEMENT REMOVAL (TOTAL, THIS SHEET, TURN LANE = 77.86 SQ YD)
② EXISTING CONTINUOUSLY REINFORCED PORTLAND CEMENT CONCRETE, 7"	Ⓑ PROPOSED HOT-MIX ASPHALT SHOULDERS, 8"	PROPOSED BITUMINOUS SHOULDER REMOVAL (TOTAL, THIS SHEET = 120.18 SQ YD)
③ EXISTING CONTINUOUSLY REINFORCED PORTLAND CEMENT CONCRETE, 8"	Ⓒ PROPOSED P.C.C. BASE COURSE, 7"	PROPOSED CONCRETE CURB AND GUTTER REMOVAL (TOTAL, THIS SHEET = 49.50 FEET)
④ EXISTING BITUMINOUS CONCRETE SURFACE COURSE, + 2 1/2"	Ⓓ PROPOSED P.C.C. PAVEMENT, 8"	PROPOSED CONCRETE SIDEWALK REMOVAL (TOTAL, THIS SHEET = 0.00 SQ FT)
⑤ EXISTING BITUMINOUS CONCRETE SHOULDER, 8"	Ⓔ PROPOSED LEVELING BINDER, 1"	
⑥ EXISTING TIE BARS, #4, @ 30" CENTERS	Ⓕ PROPOSED HOT-MIX ASPHALT SURFACE COURSE, 1 1/2"	
⑦ EXISTING COMBINATION CONCRETE CURB & GUTTER, TYPE B-6.18	Ⓖ PROPOSED COMBINATION CONCRETE CURB & GUTTER, TYPE B-6.24	
⑧ EXISTING AGGREGATE SHOULDERS	Ⓗ PROPOSED TIE BARS, 4", @ 30" CENTERS	
⑨ EXISTING UNREINFORCED PCC PAVEMENT, 7"	Ⓖ PROPOSED PCC SIDEWALK, 4"	
	Ⓙ PROPOSED HOT-MIX ASPHALT SURFACE REMOVAL, 1 1/2"	



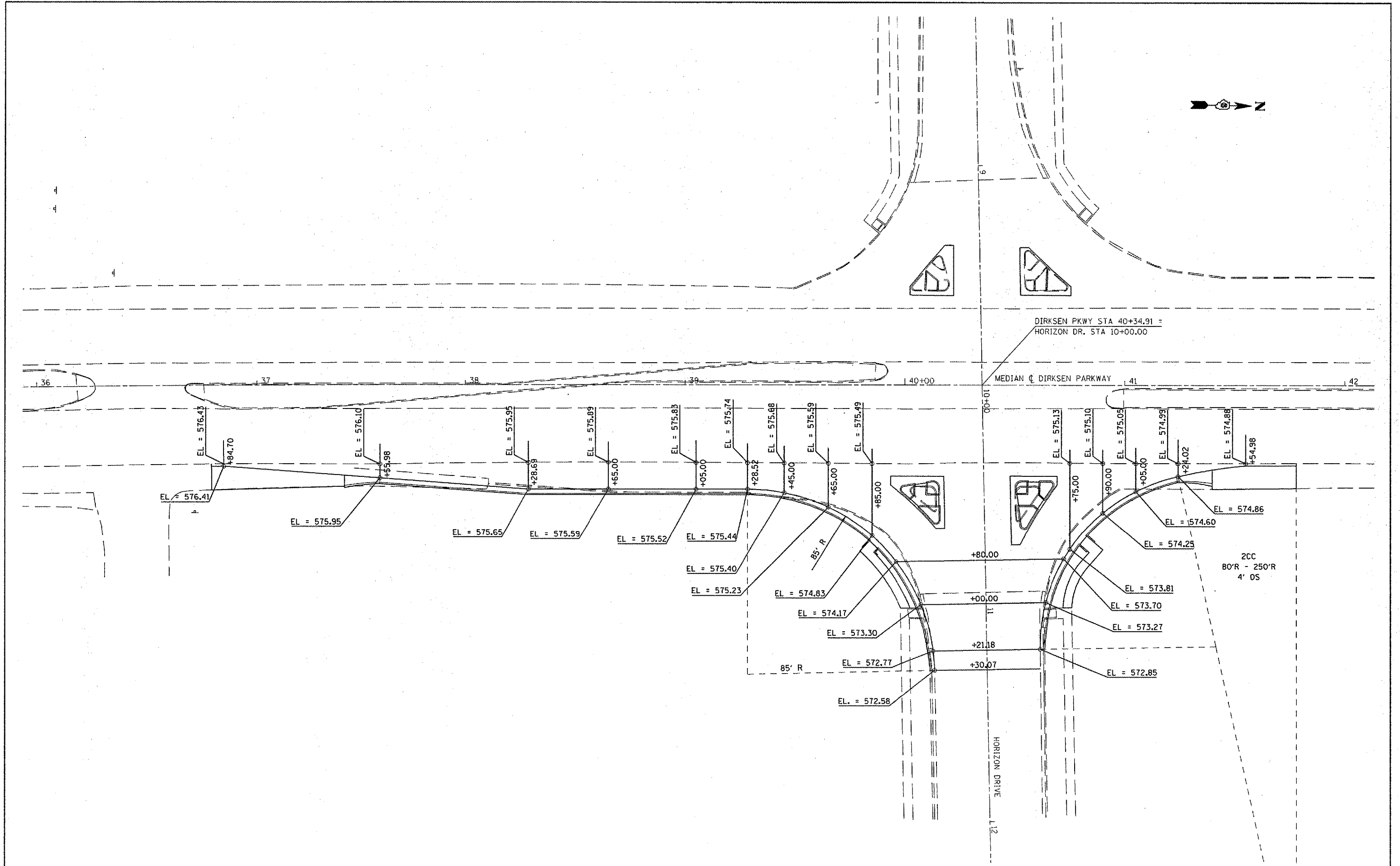


FILE NAME =	USER NAME = laughton1	DESIGNED - RTS	REVISED -
es:\projects\6603500\shiplan.dgn		DRAWN - RTS	REVISED -
		CHECKED - MEB	REVISED -
		DATE - 2/19/08	REVISED -

**STATE OF ILLINOIS
DEPARTMENT OF TRANSPORTATION**

DETAILED PLAN SHEET	
SCALE: 1/2" = 1'	SHEET NO. 3 OF 3 SHEETS
STA. _____	TO STA. _____

F.A.P. RTE. 663	SECTION 17N. TS. 1	COUNTY SANGAMON	TOTAL SHEETS 25	SHEET NO. 13
FED. ROAD DIST. NO. _____		ILLINOIS FED. AID PROJECT		
CONTRACT NO. 72B75				



FILE NAME :
 c:\projects\603508\sh1\int-det.dgn

USER NAME : loughlin1
 PLOT SCALE : 40.0000' / IN.
 PLOT DATE : Feb-20-2008 11:33:09AM

DESIGNED -
 DRAWN -
 CHECKED -
 DATE -

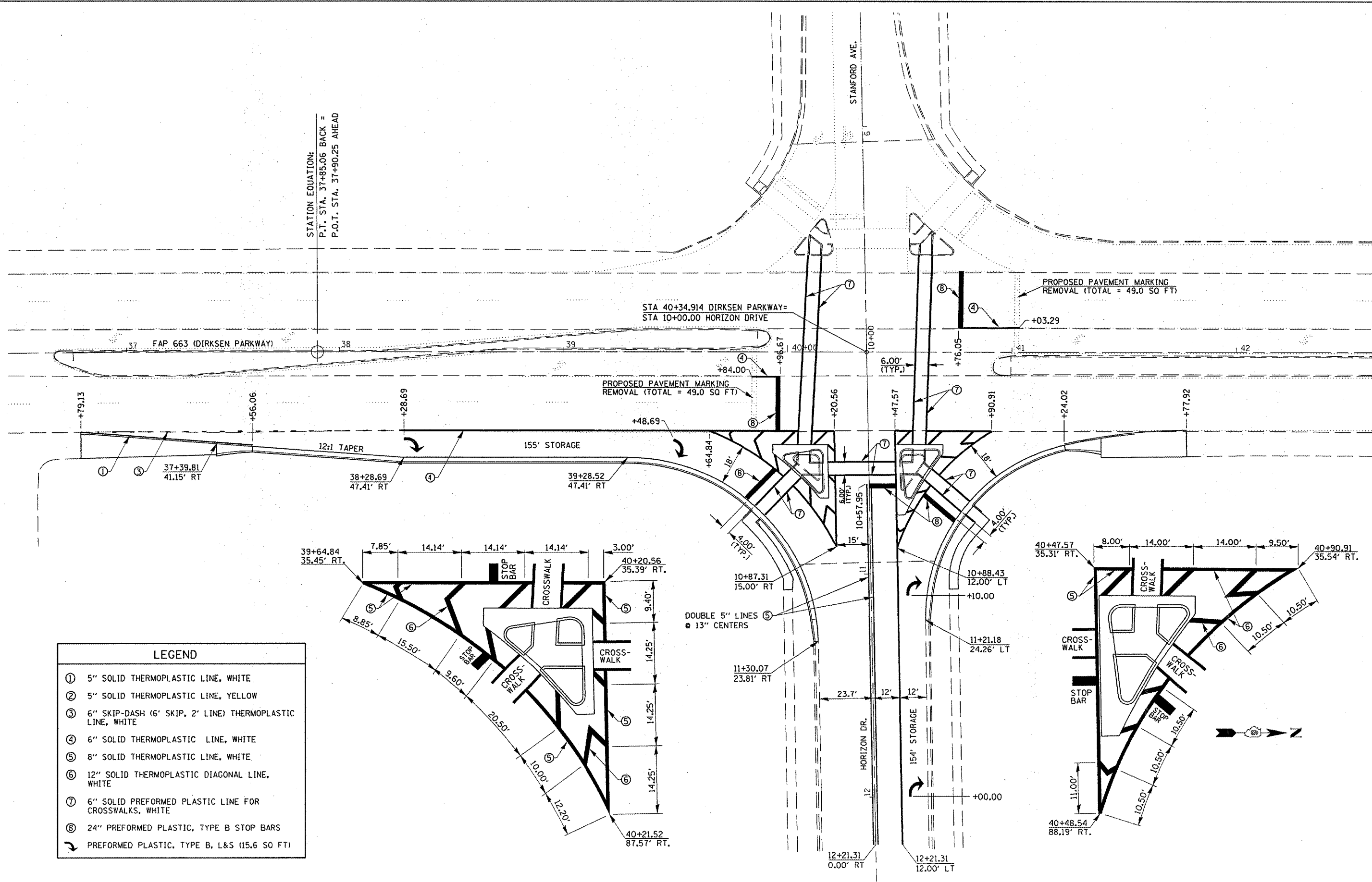
REVISED -
 REVISED -
 REVISED -
 REVISED -

**STATE OF ILLINOIS
 DEPARTMENT OF TRANSPORTATION**

ELEVATION DETAIL SHEET

SCALE: SHEET NO. 1 OF 1 SHEETS STA. TO STA.

FAP RTE.	SECTION	COUNTY	TOTAL SHEETS	SHEET NO.
663	17N, TS, 1	SANGAMON	25	15
CONTRACT NO. 72B75				
FED. ROAD DIST. NO. [ILLINOIS] FED. AID PROJECT				



STATION EQUATION:
 P.T. STA. 37+85.06 BACK =
 P.O.T. STA. 37+90.25 AHEAD

PROPOSED PAVEMENT MARKING
 REMOVAL (TOTAL = 49.0 SQ FT)

PROPOSED PAVEMENT MARKING
 REMOVAL (TOTAL = 49.0 SQ FT)

LEGEND	
①	5" SOLID THERMOPLASTIC LINE, WHITE
②	5" SOLID THERMOPLASTIC LINE, YELLOW
③	6" SKIP-DASH (6' SKIP, 2' LINE) THERMOPLASTIC LINE, WHITE
④	6" SOLID THERMOPLASTIC LINE, WHITE
⑤	8" SOLID THERMOPLASTIC LINE, WHITE
⑥	12" SOLID THERMOPLASTIC DIAGONAL LINE, WHITE
⑦	6" SOLID PREFORMED PLASTIC LINE FOR CROSSWALKS, WHITE
⑧	24" PREFORMED PLASTIC, TYPE B STOP BARS
↪	PREFORMED PLASTIC, TYPE B, L&S (15.6 SQ FT)

FILE NAME =
 c:\projects\663588\shp\mark.dgn

USER NAME = laughtin1
 PLOT SCALE = 48.0000' / IN.
 PLOT DATE = Feb-20-2008 11:33:11AM

DESIGNED - RTS
 DRAWN - RTS
 CHECKED - MEB
 DATE - 2/19/08

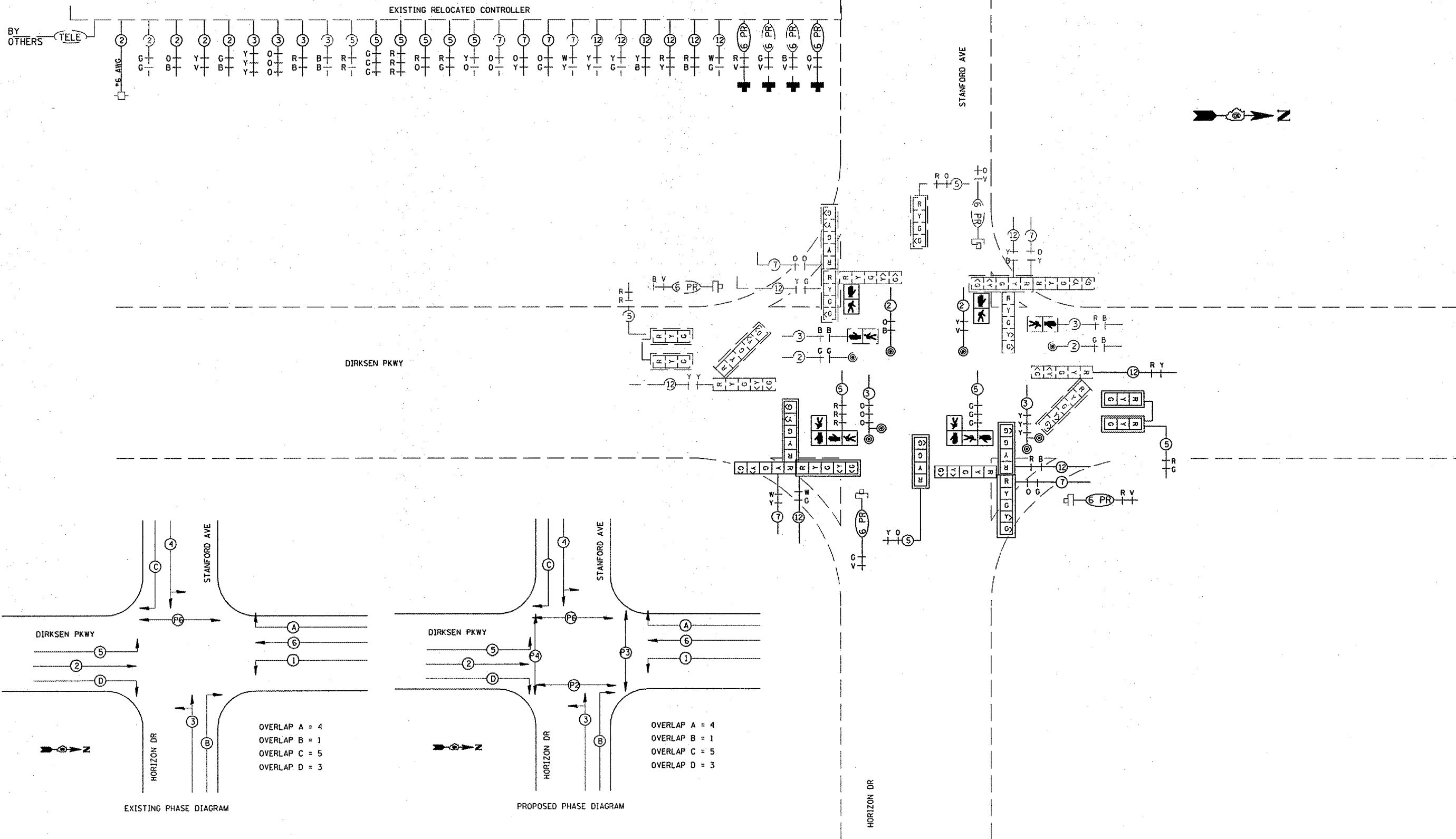
REVISED -
 REVISED -
 REVISED -
 REVISED -

STATE OF ILLINOIS
 DEPARTMENT OF TRANSPORTATION

PAVEMENT MARKING DETAIL SHE

SCALE: 1/20 SHEET NO. 1 OF 1 SHEETS STA. TO STA.

F.A.P. RTE.	SECTION	COUNTY	TOTAL SHEETS	SHEET NO.
663	17N, TS. 1	SANGAMON	25	16
CONTRACT NO. 72B75				
FED. ROAD DIST. NO. [ILLINOIS] FED. AID PROJECT				



FILE NAME * c:\projects\683508\ts_sheets.dgn	USER NAME = leughlinr1	DESIGNED -	REVISED -	STATE OF ILLINOIS DEPARTMENT OF TRANSPORTATION	TRAFFIC SIGNAL DETAILS			F.A. RTE. 663	SECTION 17N, TS, 1	COUNTY SANGAMON	TOTAL SHEETS 25	SHEET NO. 17	
	PLOT SCALE = 40,0000" / IN.	CHECKED -	REVISED -					CONTRACT NO. 72B75					
	PLOT DATE = Feb-20-2008 11:33:13AM	DATE -	REVISED -					SCALE:	SHEET NO. 1 OF 5 SHEETS	STA.	TO STA.	FED. ROAD DIST. NO.	ILLINOIS FED. AID PROJECT

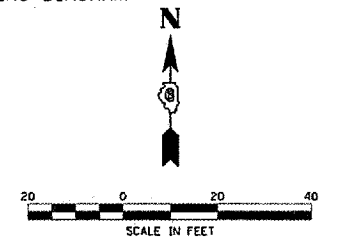
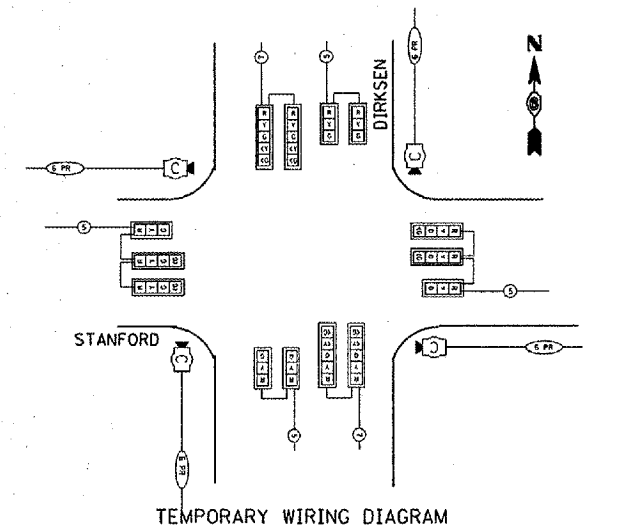
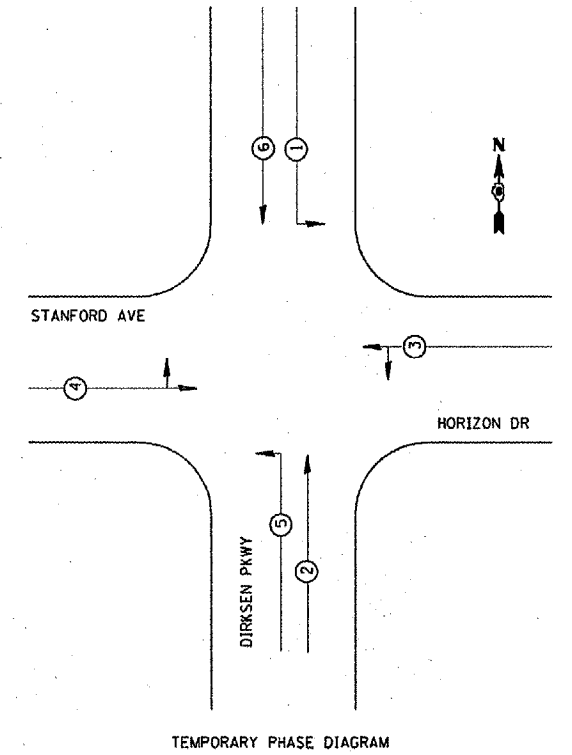
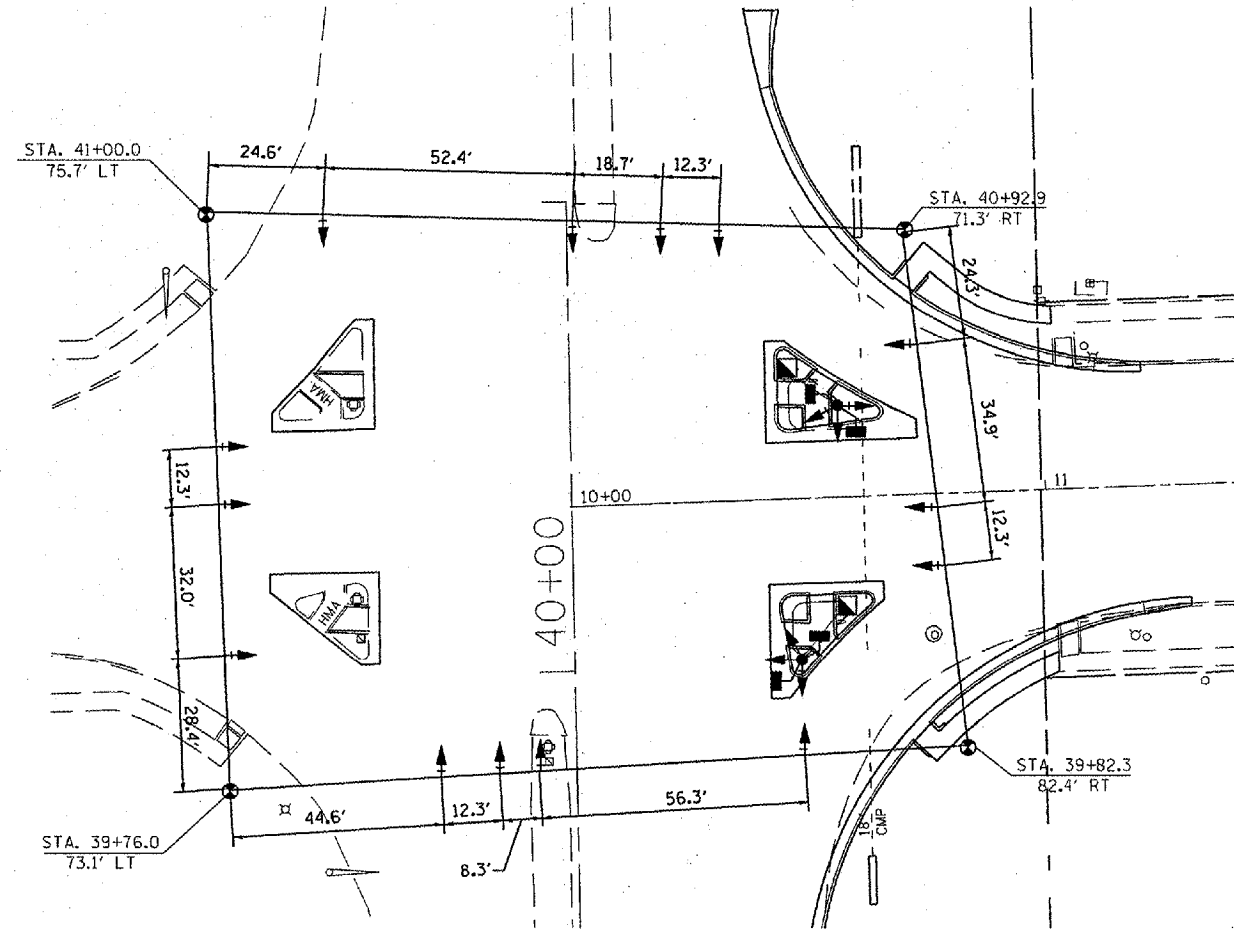
REMOVE EXISTING TRAFFIC SIGNAL EQUIPMENT CONSISTS OF:

- 2 EACH MAST ARMS
- 2 EACH POSTS
- 9 EACH SIGNAL HEADS

REMOVED TRAFFIC SIGNAL EQUIPMENT SHALL BE RETURNED TO CITY OF SPRINGFIELD. CONTACT DON OTT 757-8520 EXT. 2182
 THE EXISTING MAST ARMS AND SIGNAL POSTS ON THE EAST HALF OF THE INTERSECTION SHALL BE REMOVED

TEMPORARY SIGNAL NOTES:

1. TEMPORARY CABINET TO BE FURNISHED BY CONTRACTOR AND EQUIPPED WITH VIDEO DETECTION INTERFACE CABLES.
2. TEMPORARY SIGNALS SHALL BE OPERATIONAL PRIOR TO REMOVAL OF EXISTING SIGNALS.
3. POLES SHALL BE GUYED OR ANCHORED TO THE SATISFACTION OF THE ENGINEER. ANY ADJUSTMENTS SHALL BE CONSIDERED PART OF THE PAY ITEM FOR TEMPORARY TRAFFIC SIGNAL INSTALLATION.
4. EXISTING VIDEO DETECTION SYSTEM SHALL BE UTILIZED TO PROVIDE DETECTION FOR THE TEMPORARY CONTROLLER. THE EXISTING CAMERAS SHALL BE RELOCATED TO THE TEMPORARY POLES AND CONTROL UNIT SHALL BE RELOCATED TO THE TEMPORARY CABINET. THE CAMERAS AND CONTROL UNIT SHALL THEN BE RELOCATED TO PROPOSED SIGNALS ONCE INSTALLED. ALL ADJUSTMENTS AND RELOCATION OF VIDEO COMPONENTS AND CABLES ARE TO BE INCLUDED IN THE TEMPORARY TRAFFIC SIGNAL INSTALLATION COST.
5. POLES USED FOR TEMPORARY SIGNAL INSTALLATION SHALL PROVIDE FOR A MINIMUM 35 FT. MOUNTING HEIGHT FOR THE VIDEO CAMERAS.
6. EXISTING SERVICE TO BE UTILIZED FOR TEMPORARY AND PROPOSED SIGNALS



FILE NAME = c:\projects\0603508\ts_sheets.dgn	USER NAME = laughlinr1	DESIGNED -	REVISED -	STATE OF ILLINOIS DEPARTMENT OF TRANSPORTATION	TRAFFIC SIGNAL DETAILS			F.A. RTE.	SECTION	COUNTY	TOTAL SHEETS	SHEET NO.
	PLOT SCALE = 40.0000 / IN.	DRAWN -	REVISED -					663	17N. TS. I	SANGAMON	25	18
PLOT DATE = Feb-20-2008 11:33:13AM	CHECKED -	REVISED -	CONTRACT NO. 72B75		FED. ROAD DIST. NO. [ILLINOIS] FED. AID PROJECT							
	DATE -	REVISED -	SCALE:		SHEET NO. 2 OF 5 SHEETS	STA.	TO STA.					

TRAFFIC SIGNAL PLAN LEGEND

EXISTING	PROPOSED	DESCRIPTION
		SIGNAL HEAD
		SIGNAL HEAD WITH BACKPLATE
		TEMPORARY SIGNAL HEAD
		PEDESTRIAN SIGNAL HEAD
		PEDESTRIAN PUSHBUTTON DETECTOR
		DETECTOR LOOP
		QUADRAPOLE DETECTOR LOOP
		SIGNAL POST
		ALUMINUM MAST ARM ASSEMBLY AND POLE
		STEEL MAST ARM ASSEMBLY AND POLE
		WOOD POLE
		WOOD POLE WITH GUY
		SERVICE INSTALLATION
		CONTROLLER
		HANDHOLE
		HEAVY DUTY HANDHOLE
		DOUBLE HANDHOLE
		JUNCTION BOX
		GULFBOX JUNCTION
		AERIAL CABLE
		CONDUIT LENGTH - CONSTRUCTION (T=TRENCH P=PUSHED A=AUGERED E=EXISTING) SIZE - TYPE (S=STEEL P=PVC F=FIBER DUCT U=UNI-DUCT)
		CONDUIT SPLICE
		SPAN WIRE / TETHER WIRE
		21 SIDEWALK REMOVAL IN SQ FT
		9 PC CONC SDWLK 4 IN. IN SQ FT
		12 PC CONC SDWLK 4 IN. SPECIAL IN SQ FT

TRAFFIC SIGNAL WIRING DIAGRAM LEGEND

EXISTING	PROPOSED	DESCRIPTION
		8" SIGNAL SECTION
		DIRECTIONAL SIGNAL SECTION
		9" PEDESTRIAN SIGNAL FACE
		12" PEDESTRIAN SIGNAL FACE
		SIGNAL FACE WITH BACKPLATE
		PROGRAMMED SIGNAL SECTION
		SIGNAL SECTION WITH LOUVRE
		DUAL-INDICATION SIGNAL SECTION
		INDUCTION DETECTOR LOOP
		QUADRAPOLE DETECTOR LOOP
		DIRECT-CONNECTED LOOP LEAD-IN (TWISTED)
		ELECTRIC CABLE DENOTING NUMBER OF CONDUCTORS
		ELECTRIC CABLE TO BE REMOVED
		ELECTRIC CABLE IDENTIFIER TAPE CODES (R= RED W= WHITE Y= YELLOW G= GREEN B= BLUE O= ORANGE)
		PEDESTRIAN PUSHBUTTON DETECTOR

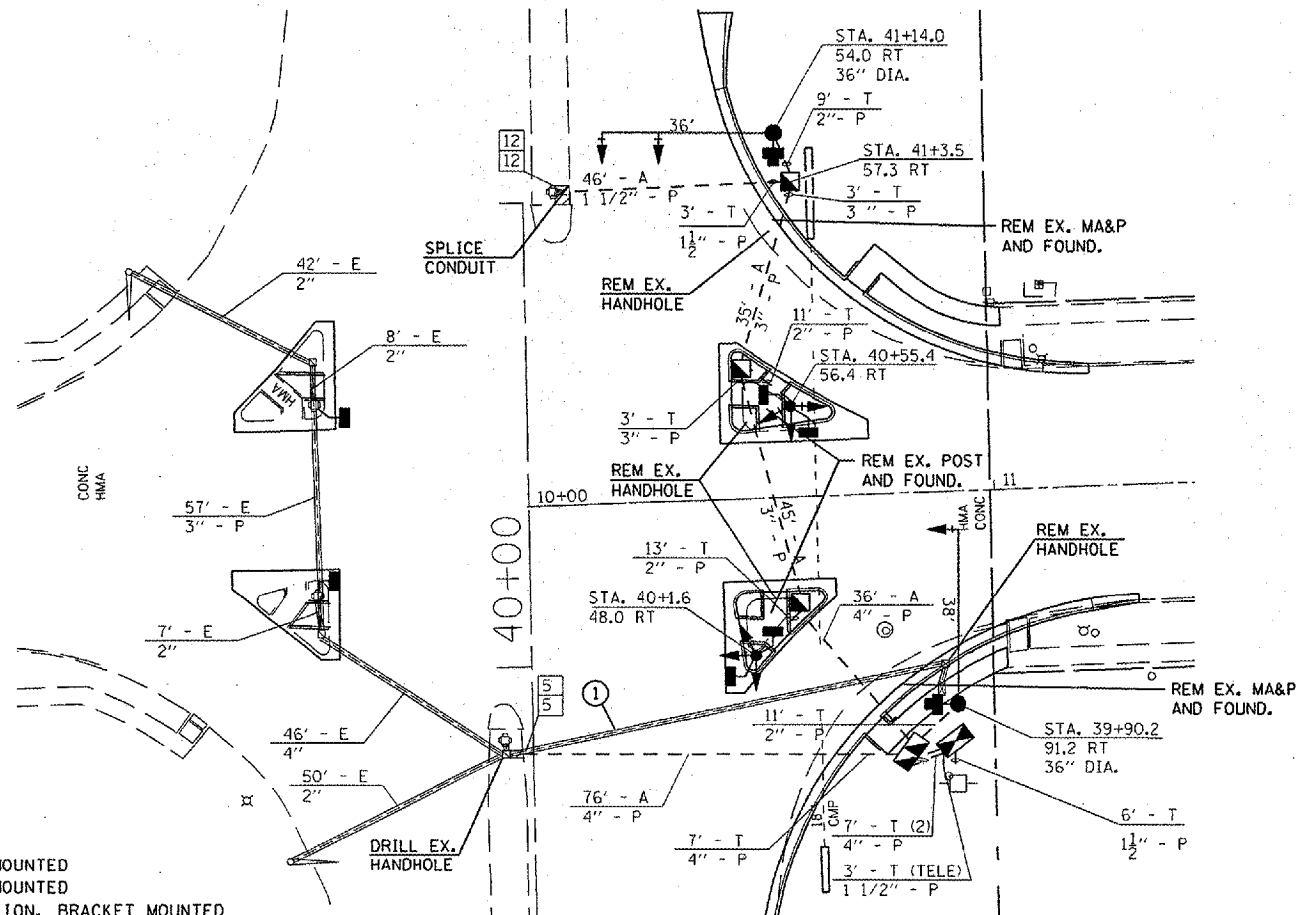
TRAFFIC SIGNAL QUANTITIES

LOCATION: DIRKSEN PKWY & STANFORD AVE

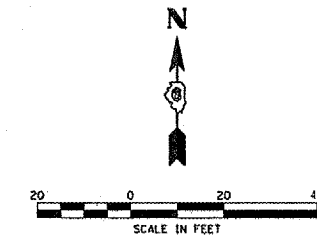
QUANTITY	UNIT	ITEM
17.0	SO FT	CONCRETE MEDIAN SURFACE REMOVAL
17.0	SO FT	CONCRETE MEDIAN SURFACE, 4"
12.0	FOOT	CONDUIT IN TRENCH, 1 1/2" DIA., PVC
44.0	FOOT	CONDUIT IN TRENCH, 2" DIA., PVC
6.0	FOOT	CONDUIT IN TRENCH, 3" DIA., PVC
21.0	FOOT	CONDUIT IN TRENCH, 4" DIA., PVC
46.0	FOOT	CONDUIT, AUGERED 1 1/2" DIA., PVC
80.0	FOOT	CONDUIT, AUGERED 3" DIA., PVC
112.0	FOOT	CONDUIT, AUGERED 4" DIA., PVC
3	EACH	HANDHOLE
1	EACH	DOUBLE HANDHOLE
83.0	FOOT	TRENCH AND BACKFILL FOR ELECTRICAL WORK
406.5	FOOT	ELECTRIC CABLE IN CONDUIT, SIGNAL NO. 14, 2C
221.5	FOOT	ELECTRIC CABLE IN CONDUIT, SIGNAL NO. 14, 3C
569.0	FOOT	ELECTRIC CABLE IN CONDUIT, SIGNAL NO. 14, 5C
241.5	FOOT	ELECTRIC CABLE IN CONDUIT, SIGNAL NO. 14, 7C
468.0	FOOT	ELECTRIC CABLE IN CONDUIT, SIGNAL NO. 14, 12C
303.5	FOOT	ELECTRIC CABLE IN CONDUIT, LEAD-IN NO. 18, 6 PAIR
15.0	FOOT	ELECTRIC CABLE IN CONDUIT, SERVICE, NO. 6, 2C
2	EACH	TRAFFIC SIGNAL POST, ALUMINUM, 16'
1	EACH	STEEL COMBINATION MAST ARM ASSEMBLY AND POLE, 36'
1	EACH	STEEL COMBINATION MAST ARM ASSEMBLY AND POLE, 38'
6.0	FOOT	CONCRETE FOUNDATION, TYPE A
3.5	FOOT	CONCRETE FOUNDATION, TYPE D
22.0	FOOT	CONCRETE FOUNDATION, TYPE E, 36" DIA.
1	EACH	DRILL EXISTING HANDHOLE

NOTES:

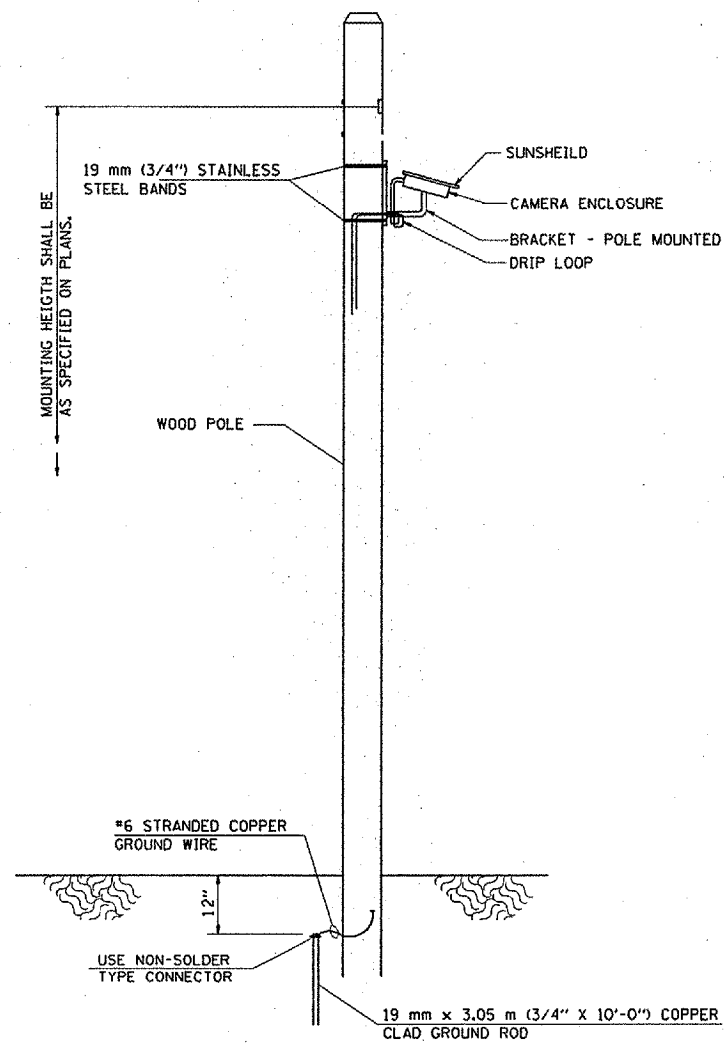
- 1.) REMOVE CABLES IN EXISTING CONDUIT TO EXISTING HANDHOLE. REINSTALL CABLES THROUGH PROPOSED CONDUIT TO RELOCATED CABINET
- 2.) TRAFFIC SIGNAL MAST ARM ASSEMBLIES SHALL BE DESIGNED FOR THE LOADINGS SHOWN ON THE HIGHWAY STANDARDS OR THESE SIGNAL PLANS WHICHEVER IS GREATER.



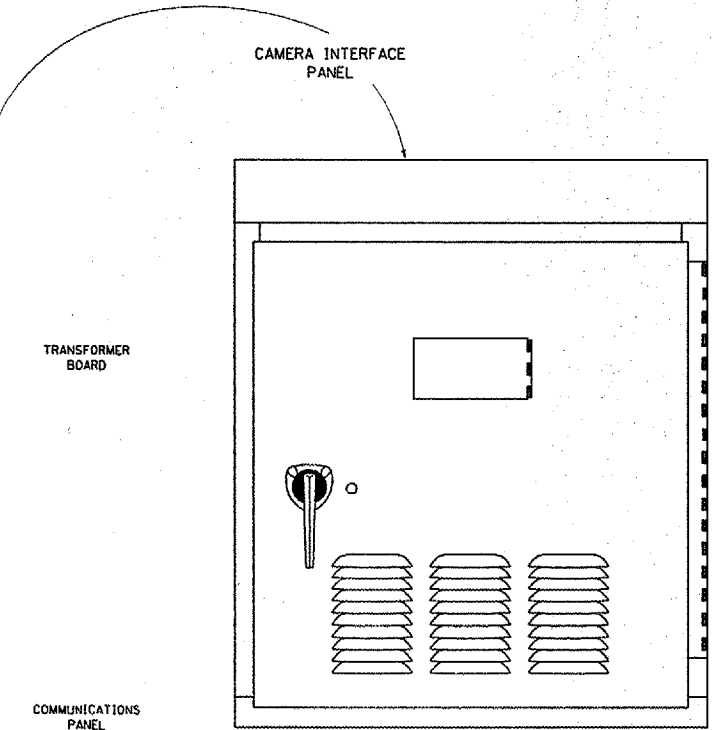
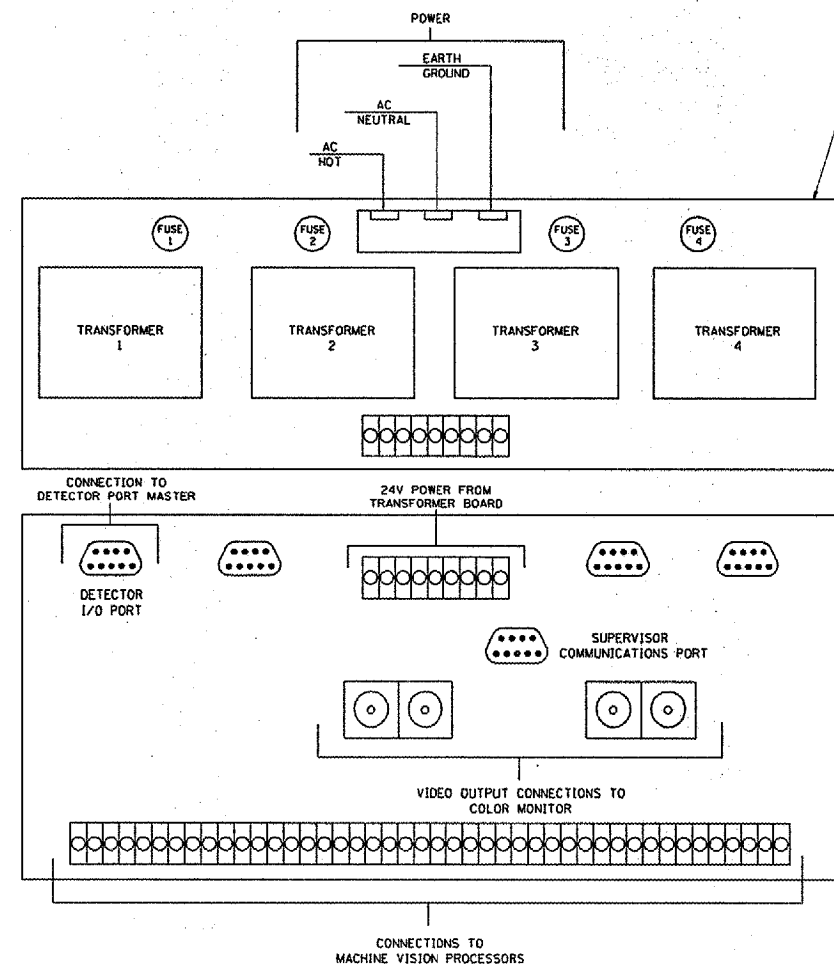
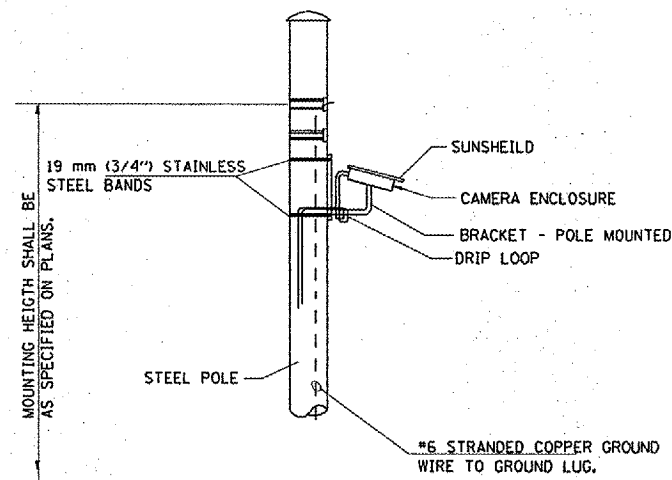
2	EACH	SIGNAL HEAD, POLYCARBONATE, LED, 1-FACE, 3-SECTION, MAST ARM MOUNTED
1	EACH	SIGNAL HEAD, POLYCARBONATE, LED, 1-FACE, 4-SECTION, MAST ARM MOUNTED
1	EACH	SIGNAL HEAD, POLYCARBONATE, LED, 3-FACE, 1-4 SECTION, 2-5 SECTION, BRACKET MOUNTED
1	EACH	SIGNAL HEAD, POLYCARBONATE, LED, 3-FACE, 5-SECTION, BRACKET MOUNTED
2	EACH	PEDESTRIAN SIGNAL HEAD, POLYCARBONATE, LED, 1-FACE, BRACKET MOUNTED
2	EACH	PEDESTRIAN SIGNAL HEAD, POLYCARBONATE, LED, 2-FACE, BRACKET MOUNTED
7	EACH	TRAFFIC SIGNAL BACKPLATE
6	EACH	PEDESTRIAN PUSH-BUTTON
1	EACH	TEMPORARY TRAFFIC SIGNAL INSTALLATION
1	EACH	MODIFY EXISTING CONTROLLER
1378.0	FOOT	REMOVE AND REINSTALL ELECTRIC CABLE FROM CONDUIT
1	EACH	REMOVE EXISTING TRAFFIC SIGNAL EQUIPMENT
4	EACH	REMOVE EXISTING HANDHOLE
4	EACH	REMOVE EXISTING CONCRETE FOUNDATION
567.0	FOOT	ELECTRIC CABLE IN CONDUIT, GROUND, NO. 6 1C (GREEN)



FILE NAME =	USER NAME = laughlin-1	DESIGNED -	REVISED -	STATE OF ILLINOIS DEPARTMENT OF TRANSPORTATION	TRAFFIC SIGNAL DETAILS		F.A.P. RTE.	SECTION	COUNTY	TOTAL SHEETS	SHEET NO.
ct:\projects\1503508\ts.sheets.dgn		DRAWN -	REVISED -		663	17N, TS, 1	SANGAMON	25	20		
PLOT SCALE = 40,0000' / IN.		CHECKED -	REVISED -		SCALE: SHEET NO. 4 OF 5 SHEETS		CONTRACT NO. 72B75				
PLOT DATE = Feb-20-2008 11:33:14AM		DATE -	REVISED -		STA.	TO STA.	FED. ROAD DIST. NO. [ILLINOIS] FED. AID PROJECT				



VIDEO DETECTION SYSTEM INSTALLATION
ARM MOUNTED OR POLE MOUNTED CAMERA



FILE NAME = c:\projects\d603509\ts.sheets.dgn	USER NAME = laughlin	DESIGNED -	REVISED -	STATE OF ILLINOIS DEPARTMENT OF TRANSPORTATION	TRAFFIC SIGNAL DETAILS			F.A.P. RTE.	SECTION	COUNTY	TOTAL SHEETS	SHEET NO.
	PLOT SCALE = 40,000 / IN.	DRAWN -	REVISED -					663	17N, TS, 1	SANGAMON	25	21
	PLOT DATE = Feb-20-2000 11:33:15AM	CHECKED -	REVISED -					CONTRACT NO. 72B75				
		DATE -	REVISED -					FED. ROAD DIST. NO. ILLINOIS FED. AID PROJECT				
				SCALE:	SHEET NO. 5 OF 5 SHEETS	STA.	TO STA.					

FINAL SURVEY	SURVEYED	BY	DATE
SURVEY	PLOTTED		
NOTE BOOK	DATE		
NO.	AREAS CHECKED		

ORIGINAL SURVEY	SURVEYED	BY	DATE
SURVEY	PLOTTED		
NOTE BOOK	DATE		
NO.	AREAS CHECKED		



FILE NAME = c:\projects\d603508\axc_dirk_sht.dgn

USER NAME = laughlin-1
 PLOT SCALE = 10.0000 / IN.
 PLOT DATE = Feb-20-2008 11:33:17AM

DESIGNED -
 DRAWN -
 CHECKED -
 DATE -

REVISED -
 REVISED -
 REVISED -
 REVISED -

**STATE OF ILLINOIS
 DEPARTMENT OF TRANSPORTATION**

DIRKSEN PARKWAY CROSS SECTIONS

SCALE: SHEET NO. 1 OF 3 SHEETS STA. 40+90.00 TO STA. 41+54.98

FAP RTE.	SECTION	COUNTY	TOTAL SHEETS	SHEET NO.
663	17N, TS, 1	SANGAMON	25	22
CONTRACT # 72B75				
FED. ROAD DIST. NO. ILLINOIS FED. AID PROJECT				

ORIGINAL SURVEY	SURVEYED	BY	DATE
NOTE BOOK NO.	PLOTTED		
	TEMPLATE		
	AREAS CHECKED		

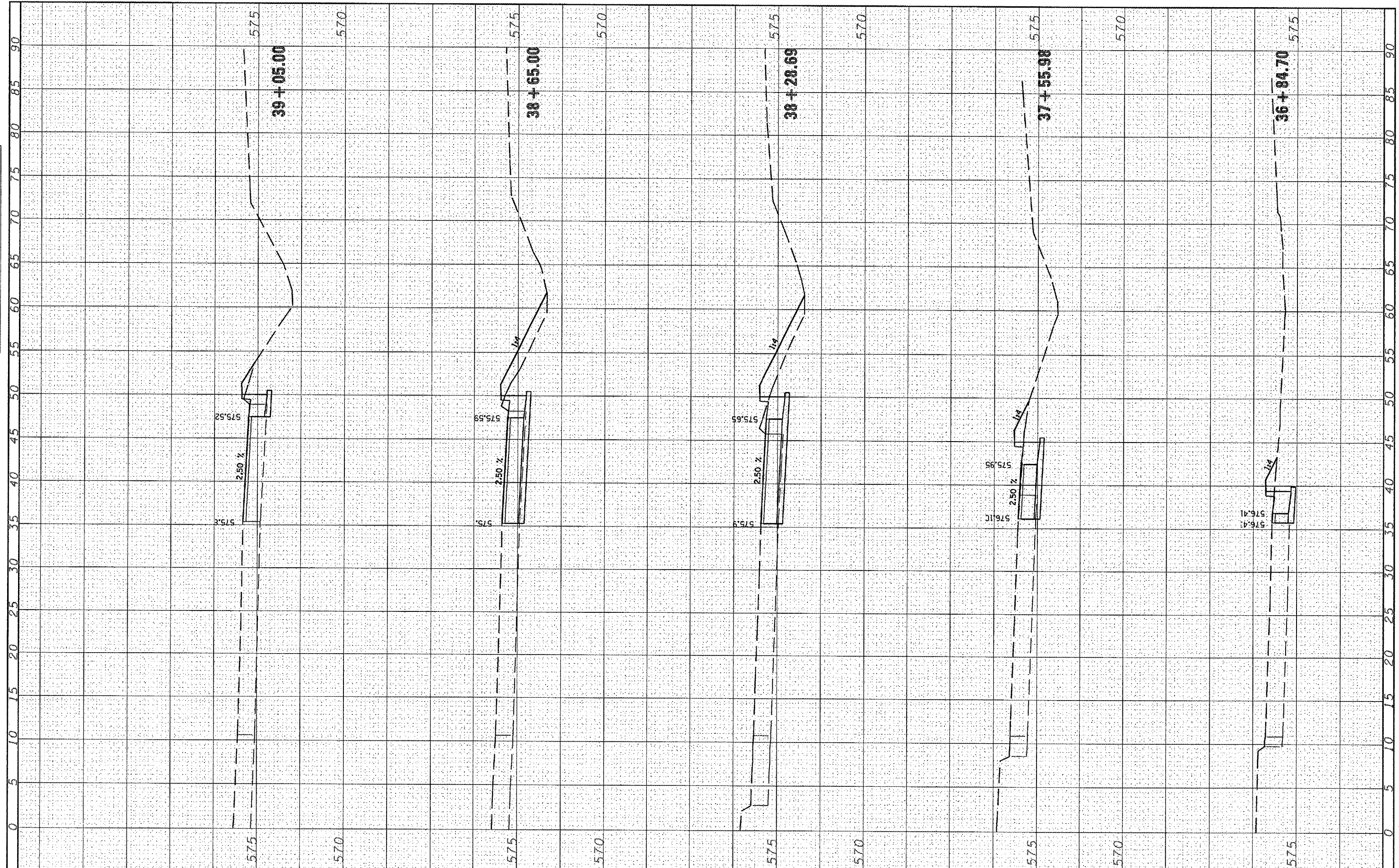
ORIGINAL SURVEY	SURVEYED	BY	DATE
NOTE BOOK NO.	PLOTTED		
	TEMPLATE		
	AREAS CHECKED		



FILE NAME = c:\projects\6035088\ssc_dirk_sht.dgn	USER NAME = laughlinr1	DESIGNED -	REVISED -	STATE OF ILLINOIS DEPARTMENT OF TRANSPORTATION	DIRKSEN PARKWAY CROSS SECTIONS	F&P RTE.	SECTION	COUNTY	TOTAL SHEETS	SHEET NO.
PLOT SCALE = 10,000 / IN.	CHECKED -	REVISED -	663			17N, TS 1	SANGAMON	25	23	
PLOT DATE = Feb-20-2008 11:33:17AM	DATE -	REVISED -	CONTRACT NO. 72B75							
			SCALE:			SHEET NO. 2 OF 3 SHEETS	STA. 39+28.52 TO STA. 40+75.00	FED. ROAD DIST. NO.	ILLINOIS FED. AID PROJECT	

FINAL SURVEY	SURVEYED	BY	DATE
PLOTTED			
NOTE BOOK			
AREAS			
CHECKED			
NO.			

ORIGINAL SURVEY	SURVEYED	BY	DATE
PLOTTED			
NOTE BOOK			
AREAS			
CHECKED			
NO.			



FILE NAME = c:\projects\683508\ssc_dirk.sht.dgn

USER NAME = laughlinr1
 DESIGNED -
 DRAWN -
 CHECKED -
 DATE -

REVISÉ -
 REVISÉ -
 REVISÉ -
 REVISÉ -

**STATE OF ILLINOIS
 DEPARTMENT OF TRANSPORTATION**

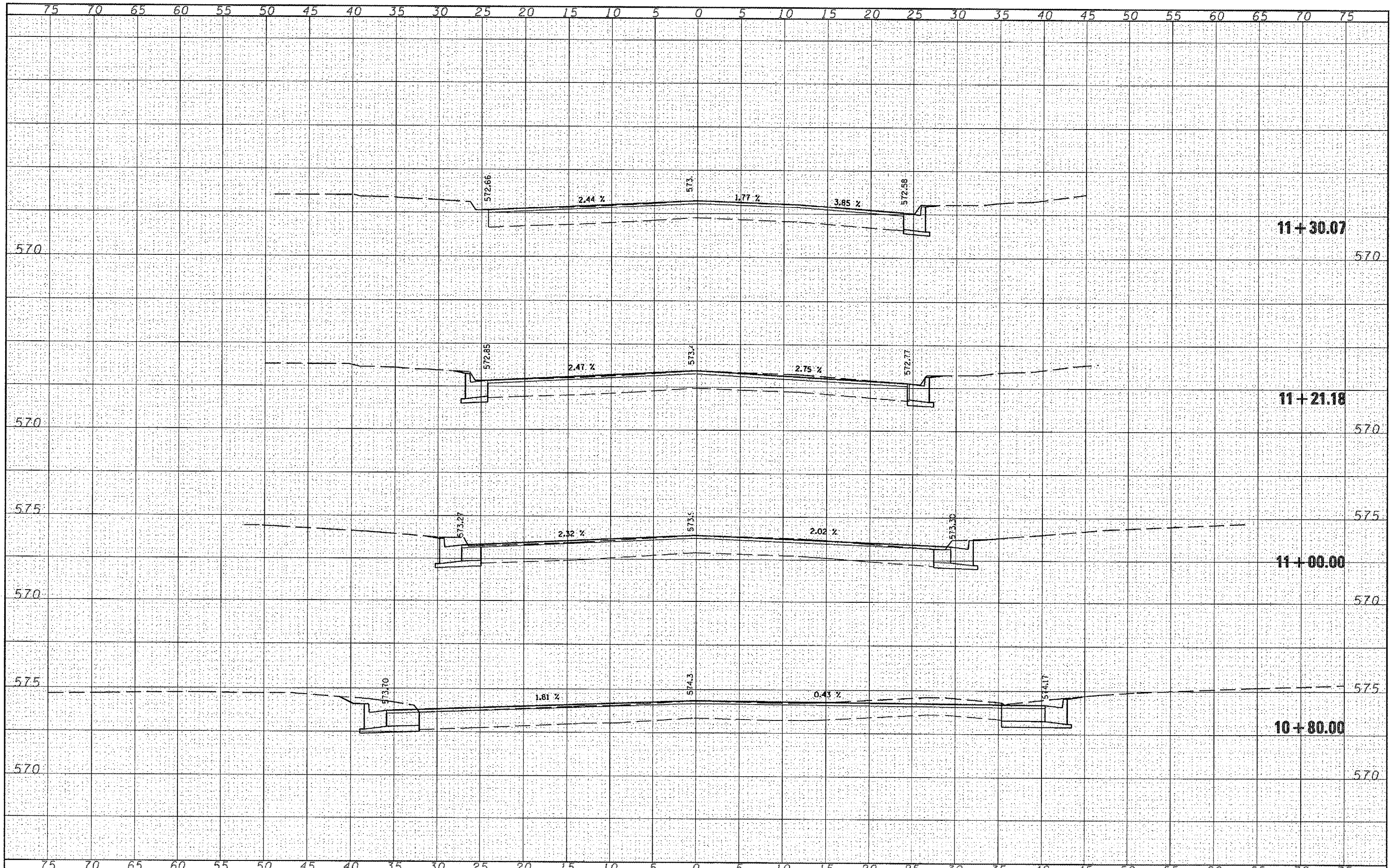
DIRKSEN PARKWAY CROSS SECTIONS

SCALE: SHEET NO. 3 OF 3 SHEETS STA. 36+84.70 TO STA. 39+05.00

FAP RTE.	SECTION	COUNTY	TOTAL SHEETS	SHEET NO.
663	17N, TS, 1	SANGAMON	25	24
CONTRACT NO. 72B75				
FED. ROAD DIST. NO. ILLINOIS FED. AID PROJECT				

BY	DATE
SURVEYED	
PLOTTED	
TEMPLATE	
AREAS	
AREAS CHECKED	
NO.	

BY	DATE
SURVEYED	
PLOTTED	
TEMPLATE	
AREAS	
AREAS CHECKED	
NO.	



FILE NAME = c:\projects\0603508\kso_horizon_sht.dgn	USER NAME = laughlinr1	DESIGNED -	REVISED -	STATE OF ILLINOIS DEPARTMENT OF TRANSPORTATION	HORIZON DRIVE CROSS SECTIONS		FAP RTE. 663	SECTION 17N, TS, 1	COUNTY SANGAMON	TOTAL SHEETS 25	SHEET NO. 25	
		DRAWN -	REVISED -		SCALE:	SHEET NO. 1 OF 1 SHEETS	STA. 10+80.00	TO STA. 11+30.07	CONTRACT NO. 72B75			
		CHECKED -	REVISED -		FED. ROAD DIST. NO. [ILLINOIS] FED. AID PROJECT							
		DATE -	REVISED -									