

STATE OF ILLINOIS
DEPARTMENT OF TRANSPORTATION

DIVISION OF HIGHWAYS

PROPOSED
HIGHWAY PLANS

FAP ROUTE 322 (US 51)
SECTION D6 BUILDING DEMOLITION 2008-2

CHRISTIAN COUNTY
C-96-043-08

F.A.P. RTE.	SECTION	COUNTY	TOTAL SHEETS	SHEET NO.
322		CHRISTIAN	6	1
FED. ROAD DIST. NO.	ILLINOIS	CONTRACT NO. 72B81		

- D6 BUILDING DEMOLITION 2008-2

D-96-043-08

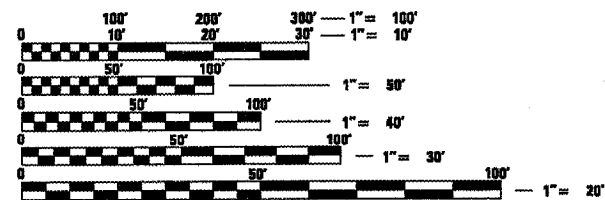


INDEX OF SHEETS

- 1 COVER SHEET
- 2 GENERAL NOTES
- 3 SUMMARY OF QUANTITIES
- 4 PLAN SHEET
- 5 SEEDING PLAN SHEET
- 6 FUTURE FOUR LANE PLAN SHEET

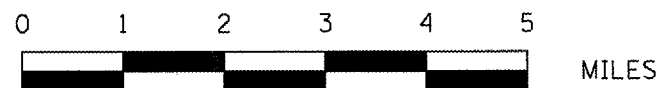
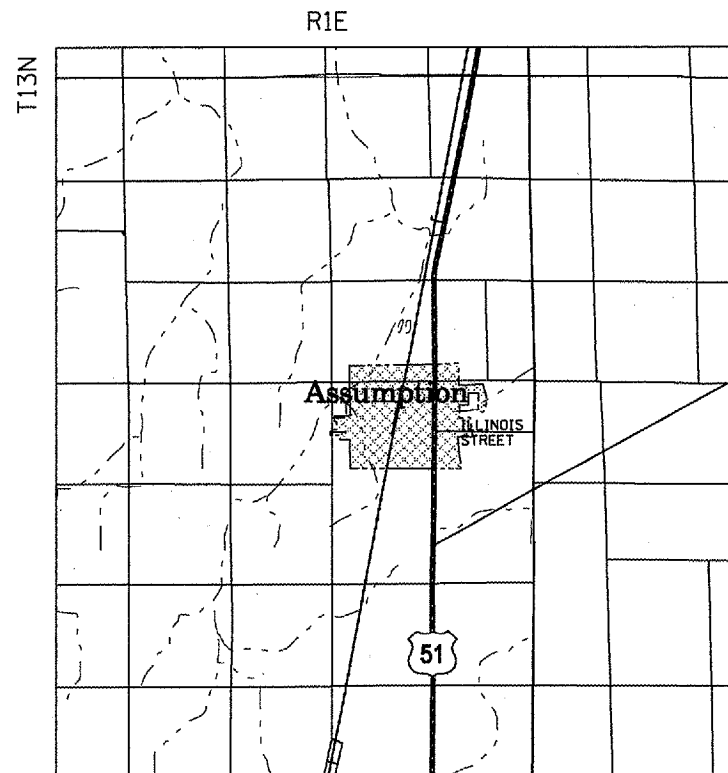
HIGHWAY STANDARDS

- 701001-01
- 701006-02
- 701901
- 000001-05



FULL SIZE PLANS HAVE BEEN PREPARED USING STANDARD ENGINEERING SCALES. REDUCED SIZED PLANS WILL NOT CONFORM TO STANDARD SCALES. IN MAKING MEASUREMENTS ON REDUCED PLANS, THE ABOVE SCALES MAY BE USED.

J.U.L.I.E.
JOINT UTILITY LOCATION INFORMATION FOR EXCAVATION
1-800-892-0123
OR 811



SCALE

PROJECT ENGINEER: SAL MADONIA PH 217-782-4761
SQUAD LEADER: JEFFREY P. MYERS PH 217-524-7940

CONTRACT NO. 72B81

STATE OF ILLINOIS
DEPARTMENT OF TRANSPORTATION
DIVISION OF HIGHWAYS

SUBMITTED FEB 5 2008

Christine M. Reed
DEPUTY DIRECTOR OF HIGHWAYS, REGION ENGINEER

March 21, 2008
Eric E. Harn
ENGINEER OF DESIGN AND ENVIRONMENT

March 21, 2008
Christine M. Reed
DIRECTOR OF HIGHWAYS, CHIEF ENGINEER

PRINTED BY THE AUTHORITY
OF THE STATE OF ILLINOIS

GENERAL NOTES

1. SEEDING WILL NOT BE PERMITTED AT ANY TIME WHEN THE GROUND IS FROZEN, WET OR IN AN UNTILLABLE CONDITION. LOCATIONS TO BE SEEDED SHALL BE DETERMINED BY THE ENGINEER.

2. THE CONTRACTOR SHALL BE RESPONSIBLE FOR PROTECTING UTILITY PROPERTY FROM CONSTRUCTION OPERATIONS AS OUTLINED IN ARTICLE 107.31 OF THE STANDARD SPECIFICATIONS. THE JULIE NUMBER IS 800-892-0123. A MINIMUM OF FORTY-EIGHT HOURS ADVANCE NOTICE IS REQUIRED. ANY DAMAGE TO THE UNDERGROUND FACILITIES, CAUSED BY THE CONTRACTOR, SHALL BE REPAIRED TO THE SATISFACTION OF THE DEPARTMENT AT THE CONTRACTOR'S EXPENSE, INCLUDING TEMPORARY REPAIRS WHICH MAY BE REQUIRED TO KEEP THE FACILITY OPERATIONAL WHILE MATERIALS IS BEING OBTAINED TO MAKE PERMANENT REPAIRS.

3. ANY REFERENCE TO A STANDARD IN THESE PLANS SHALL BE INTERPRETED TO MEAN THE EDITION AS INDICATED BY THE SUBNUMBER LISTED ON THE INDEX OF SHEETS OR THE COPY OF THE STANDARD INCLUDED IN THESE PLANS.

COMMITMENTS

THERE ARE NO COMMITMENTS ON THIS PROJECT.

DISTRICT SIX	
EXAMINED <u>January 16</u> 20 <u>08</u> <i>John J. Harris</i>	
OPERATIONS ENGINEER	
EXAMINED <u>Jan 25</u> 20 <u>08</u> <i>W.R. Tracy</i>	
PROGRAM IMPLEMENTATION ENGINEER	
EXAMINED <u>FEB 5</u> 20 <u>08</u> <i>W.R. Tracy</i>	
PROGRAM DEVELOPMENT ENGINEER	

• - D6 BUILDING DEMOLITION 2008-2

ILLINOIS DEPARTMENT OF TRANSPORTATION
SUMMARY OF QUANTITIES

LOCATION OF WORK				
SUMMARY OF QUANTITIES				100% STATE
CODE NO.	ITEM	UNIT	TOTAL QUANTITY	CONSTRUCTION TYPE CODE
				<i>Y004</i>
25000200	SEEDING, CLASS 2	ACRE	0.6	0.6
25000400	NITROGEN FERTILIZER NUTRIENT	POUND	54	54
25000500	PHOSPHORUS FERTILIZER NUTRIENT	POUND	54	54
25000600	POTASSIUM FERTILIZER NUTRIENT	POUND	54	54
25100115	MULCH, METHOD 2	ACRE	0.6	0.6
67100100	MOBILIZATION	L SUM	1	1
67201000	SEALING ABANDONED WATER WELLS	EACH	2	2
70103700	TRAFFIC CONTROL COMPLETE	L SUM	1	1
Z0007601	BUILDING REMOVAL NO. 1	L SUM	1	1
Z0023800	FILLING EXISTING SEPTIC TANK	EACH	1	1

FILE NAME = c:\proj\cts\d684388\shsq.dgn	USER NAME = laughlin1	DESIGNED -	REVISED -
		DRAWN -	REVISED -
	PLOT SCALE = 100.0000' / IN.	CHECKED -	REVISED -
	PLOT DATE = Feb-05-2008 09:52:33AM	DATE -	REVISED -

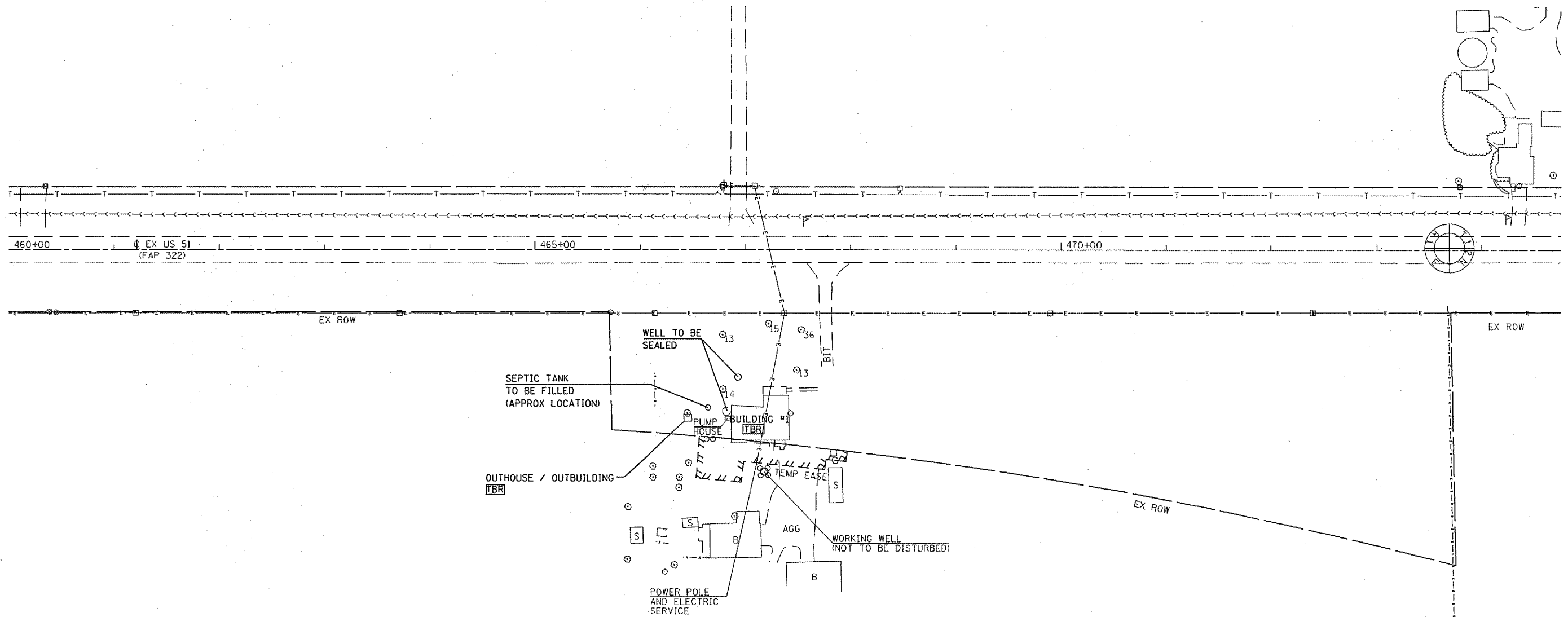
**STATE OF ILLINOIS
DEPARTMENT OF TRANSPORTATION**

SUMMARY OF QUANTITIES

SCALE: SHEET NO. OF SHEETS STA. TO STA.

* - D6 BUILDING DEMOLITION 2008-2

F.A.P. RTE.	SECTION	COUNTY	TOTAL SHEETS	SHEET NO.
322	*	CHRISTIAN	6	3
CONTRACT NO. 72B81				
FED. ROAD DIST. NO. [ILLINOIS] FED. AID PROJECT				



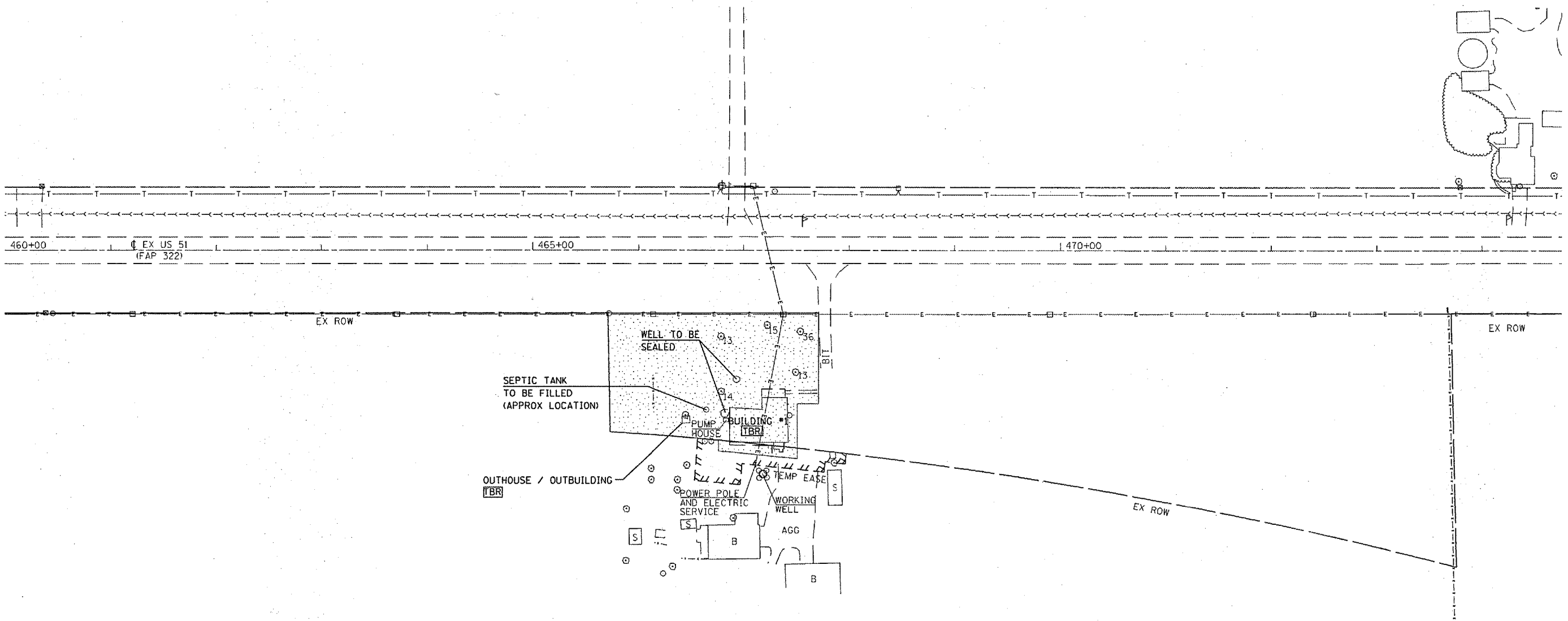
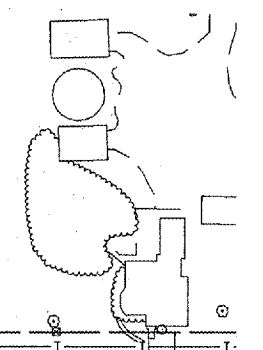
NOTES:

BUILDING NO. 1 HAS BEEN PREVIOUSLY REMOVED, EXCEPT FOR THE FOUNDATION.

BUILDING REMOVAL NO. 1 SHALL INCLUDE THE REMOVAL OF THE OUTHOUSE / OUTBUILDING.

* - D6 BUILDING DEMOLITION 2008-2

FILE NAME = c:\projects\1604328\shplan.dgn	USER NAME = laughlin1	DESIGNED -	REVISED -	STATE OF ILLINOIS DEPARTMENT OF TRANSPORTATION	PLAN SHEET			F.A.P. RTE.	SECTION	COUNTY	TOTAL SHEETS	SHEET NO.
	PLOT SCALE = 100.0000' / IN.	DRAWN -	REVISED -					322	*	CHRISTIAN	6	4
	PLOT DATE = Feb-05-2008 09:52:35AM	CHECKED -	REVISED -					CONTRACT NO. 72B81				
	DATE -	REVISED -		SCALE:	SHEET NO.	OF	SHEETS	STA.	TO STA.	FED. ROAD DIST. NO.	ILLINOIS FED. AID PROJECT	



 SEEDING, CLASS 2

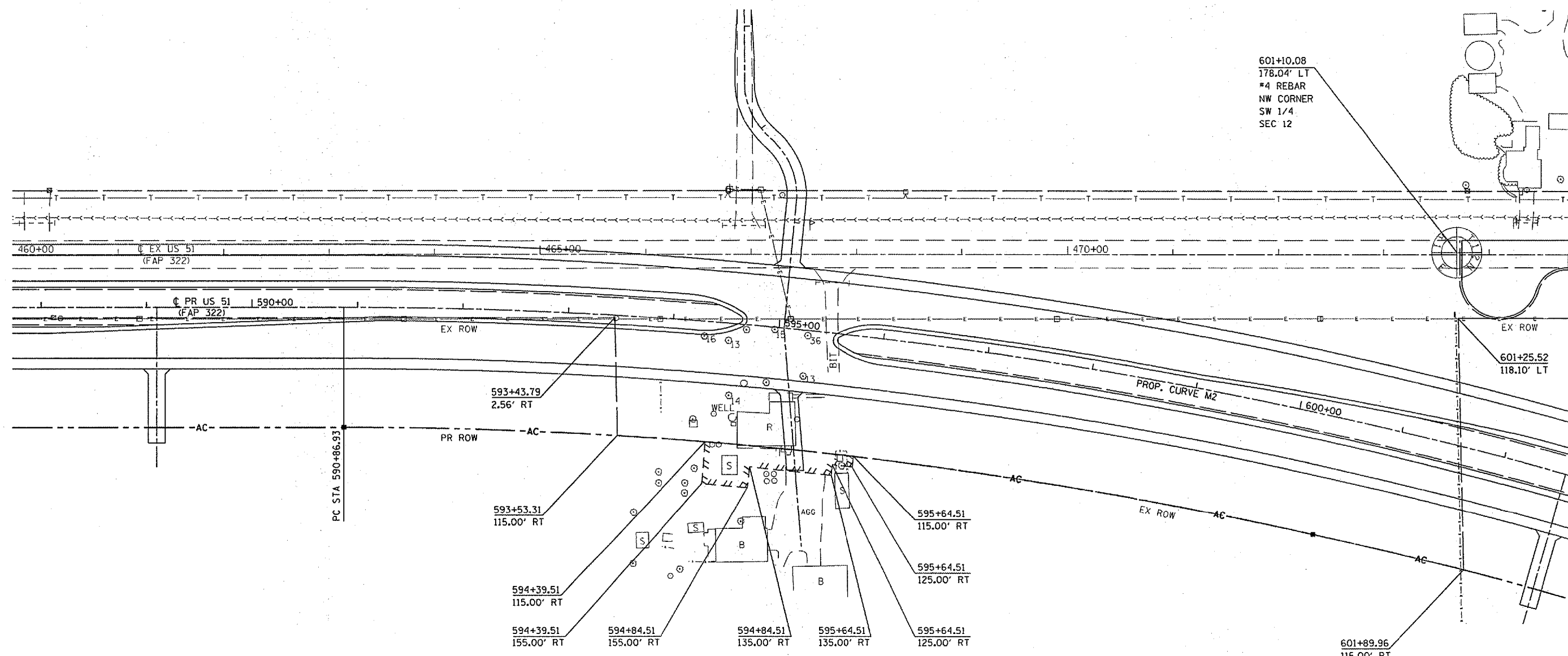
* - D6 BUILDING DEMOLITION 2008-2

FILE NAME = c:\projects\4684308\shp\plan.dgn	USER NAME = laughtinl	DESIGNED -	REVISED -
		DRAWN -	REVISED -
		CHECKED -	REVISED -
		DATE -	REVISED -

**STATE OF ILLINOIS
DEPARTMENT OF TRANSPORTATION**

SEEDING PLAN SHEET			
SCALE:	SHEET NO.	OF SHEETS	STA. TO STA.

F.A.P. RTE. 322	SECTION *	COUNTY CHRISTIAN	TOTAL SHEETS 6	SHEET NO. 5
FED. ROAD DIST. NO.		ILLINOIS FED. AID PROJECT	CONTRACT NO. 72B81	



FOR INFORMATION ONLY

PROP. CURVE M2
 PI STA. = 600+54.42
 $\Delta = 25^\circ 22' 36''$ (RT)
 $D = 1^\circ 20' 00''$
 $R = 4,297.18'$
 $T = 967.49'$
 $L = 1,903.25'$
 $E = 107.57'$
 P.C. STA. = 590+86.93
 P.T. STA. = 609+90.18

FILE NAME = c:\projects\684388\veh\plan.dgn	USER NAME = laughlinl	DESIGNED -	REVISED -	STATE OF ILLINOIS DEPARTMENT OF TRANSPORTATION	FUTURE FOUR LANE PLAN SHEET			F.A.P. RTE. 322	SECTION .	COUNTY CHRISTIAN	TOTAL SHEETS 6	SHEET NO. 6
		DRAWN -	REVISED -		SCALE:	SHEET NO.	OF	SHEETS	STA.	TO STA.	FED. ROAD DIST. NO.	ILLINOIS FED. AID PROJECT
		CHECKED -	REVISED -		CONTRACT NO. 72B81							
		DATE -	REVISED -									

- - D6 BUILDING DEMOLITION 2008-2