

F.A.P. RTE.	SECTION	COUNTY	TOTAL SHEETS	SHEET NO.
322	19RS-2	SHELBY	33	1

D-97-016-06

STATE OF ILLINOIS  
DEPARTMENT OF TRANSPORTATION  
DIVISION OF HIGHWAYS  
**PROPOSED  
HIGHWAY PLANS**

FOR INDEX OF SHEETS, SEE SHEET NO. 2

**STATION EQUATIONS:**

- STA. 1082 + 37.56 BK = STA. 1082 + 37.70 AH
- STA. 1097 + 22.95 BK = STA. 1097 + 22.30 AH
- STA. 1189 + 77.32 BK = STA. 1190 + 25.87 AH
- STA. 1273 + 55.64 BK = STA. 1274 + 58.48 AH
- STA. 1336 + 27.03 BK = STA. 1336 + 22.42 AH
- STA. 1368 + 91.00 BK = STA. 1368 + 92.00 AH

FAP ROUTE 322 (U.S. RTE. 51)  
SECTION 19RS-4  
SHELBY COUNTY  
PROJECT : ACNHF-0322(083)

C-97-037-06

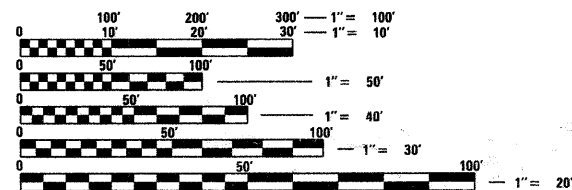
**BRIDGE OMISSION:**

STA. 1244 + 38.75 TO STA. 1245 + 17.25

2005 ADT = 3100

FAP ROUTE 322 (U.S. RTE. 51)  
SECTION 19RS-4  
SHELBY COUNTY  
PROJECT ENDS STA. 1406 + 40

FAP ROUTE 322 (U.S. RTE. 51)  
SECTION 19RS-4  
SHELBY COUNTY  
PROJECT BEGINS STA. 913 + 65

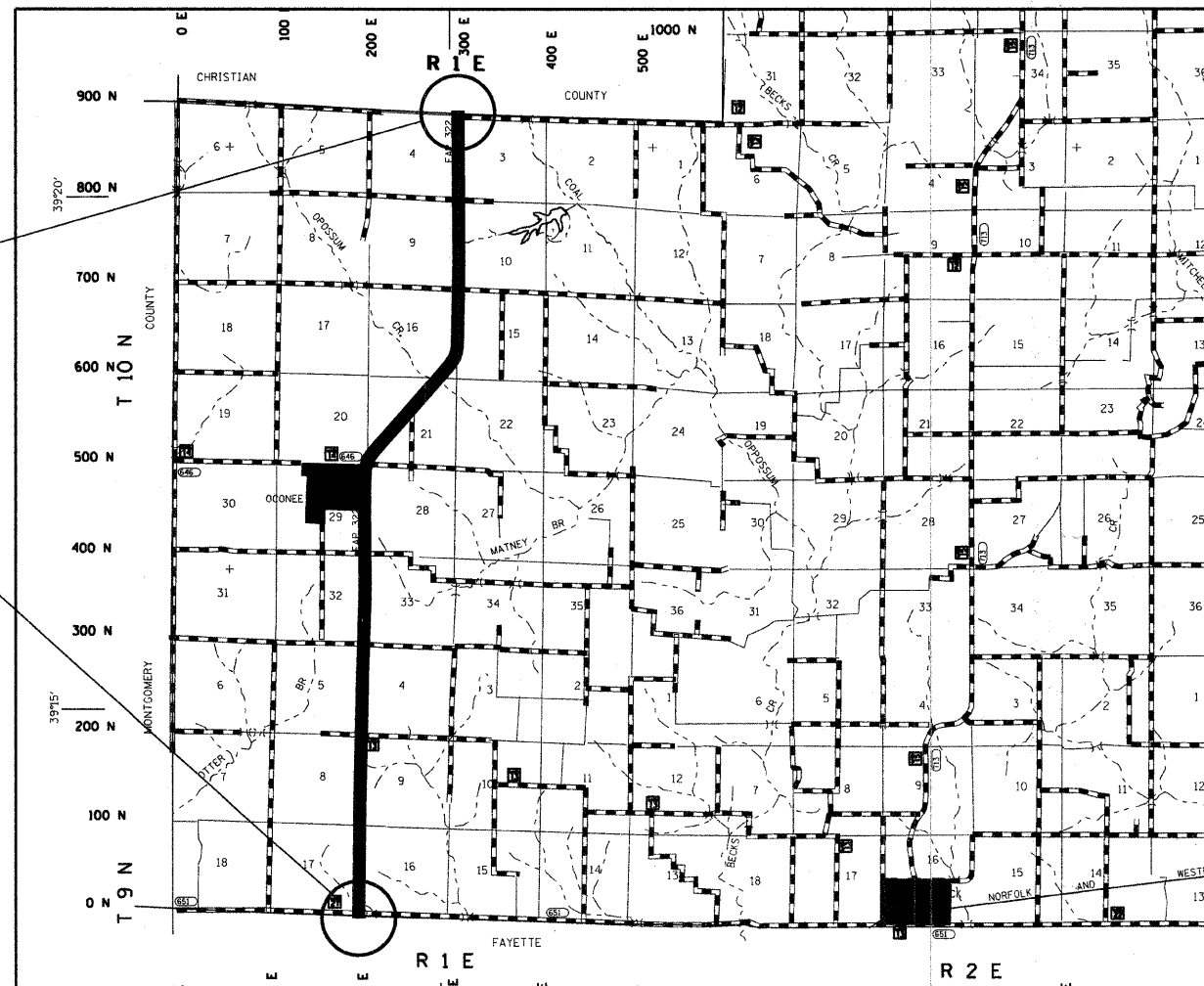


FULL SIZE PLANS HAVE BEEN PREPARED USING STANDARD ENGINEERING SCALES. REDUCED SIZED PLANS WILL NOT CONFORM TO STANDARD SCALES. IN MAKING MEASUREMENTS ON REDUCED PLANS, THE ABOVE SCALES MAY BE USED.

J.U.L.I.E.  
JOINT UTILITY LOCATION INFORMATION FOR EXCAVATION  
1-800-892-0123

TOWNSHIP: OONEE

CONTRACT NO. 74144



GROSS LENGTH = 49127.7 FEET = 9.30 MILES  
NET LENGTH = 49049.2 FEET = 9.29 MILES



LOCATION OF SECTION INDICATED THUS: -

STATE OF ILLINOIS  
DEPARTMENT OF TRANSPORTATION  
DIVISION OF HIGHWAYS

SUBMITTED January 30, 20 08  
Christine M. Reed  
DEPUTY DIRECTOR OF HIGHWAYS, REGION ENGINEER  
March 21, 20 08  
Eric E. Harms  
Interim ENGINEER OF DESIGN AND ENVIRONMENT  
March 21, 20 08  
Christine M. Reed  
DIRECTOR OF HIGHWAYS, CHIEF ENGINEER

**PRINTED BY THE AUTHORITY  
OF THE STATE OF ILLINOIS**

PROJECT ENGINEER : GARY WELTON  
SQUAD LEADER : JENNIFER WENTHE  
DESIGNER : JENNIFER WENTHE  
TELEPHONE : 217/342-3951 EX 361