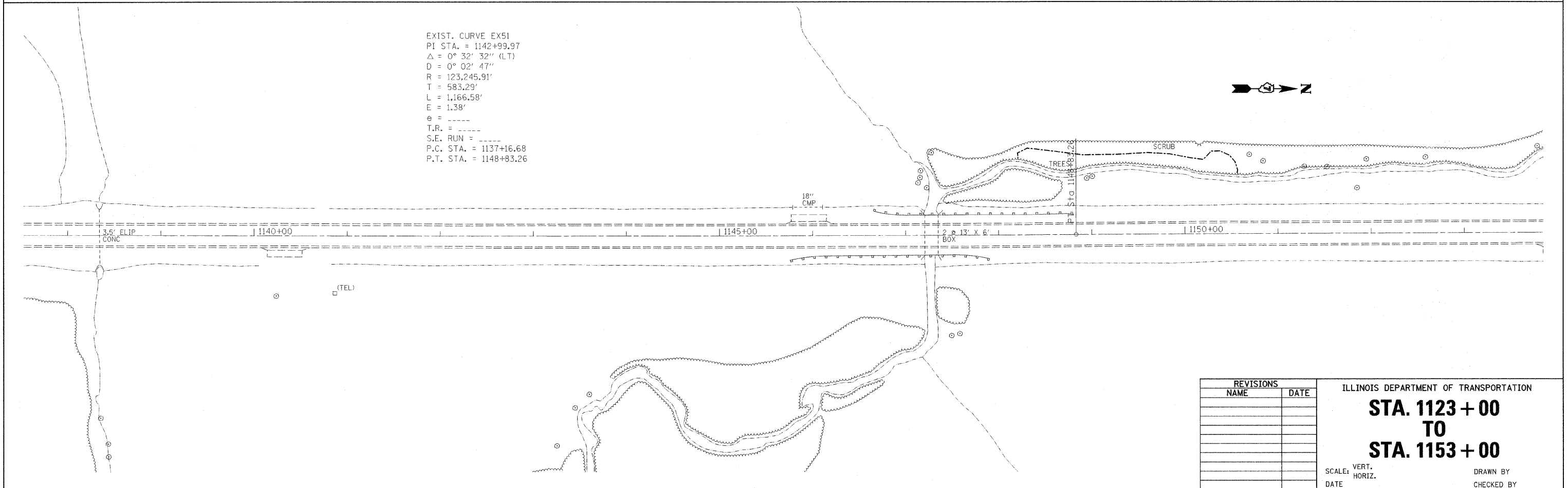
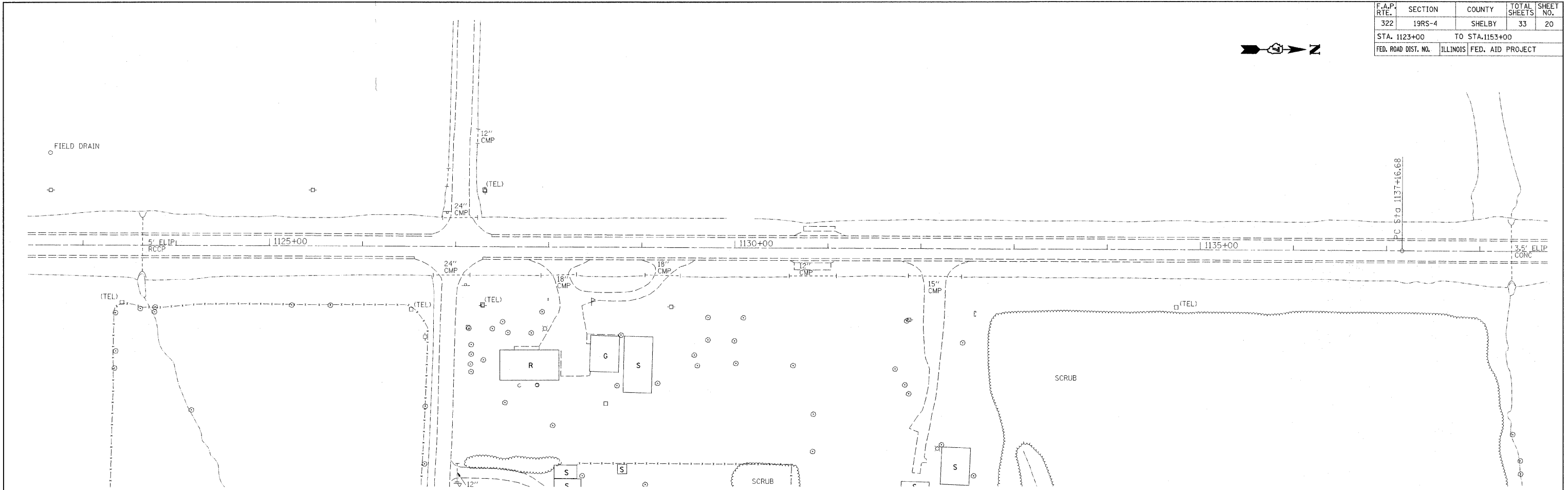


F.A.P. RTE.	SECTION	COUNTY	TOTAL SHEETS	SHEET NO.
322	19RS-4	SHELBY	33	20
STA. 1123+00		TO STA. 1153+00		
FED. ROAD DIST. NO.		ILLINOIS FED. AID PROJECT		



EXIST. CURVE EX51
 PI STA. = 1142+99.97
 $\Delta = 0^\circ 32' 32''$ (LT)
 $D = 0^\circ 02' 47''$
 $R = 123,245.91'$
 $T = 583.29'$
 $L = 1,166.58'$
 $E = 1.38'$
 $\theta = \text{-----}$
 $T.R. = \text{-----}$
 $S.E. \text{ RUN} = \text{-----}$
 $P.C. \text{ STA.} = 1137+16.68$
 $P.T. \text{ STA.} = 1148+83.26$



REVISIONS	
NAME	DATE

ILLINOIS DEPARTMENT OF TRANSPORTATION
STA. 1123 + 00
TO
STA. 1153 + 00
 SCALE: VERT. / HORIZ.
 DATE: / /
 DRAWN BY: / /
 CHECKED BY: / /

PLOT DATE = 1/29/2008
 FILE NAME = c:\projects\74144\shplan\74144.dgn
 PLOT SCALE = 50.0000' / 1" IN.
 USER NAME = swb@ctm