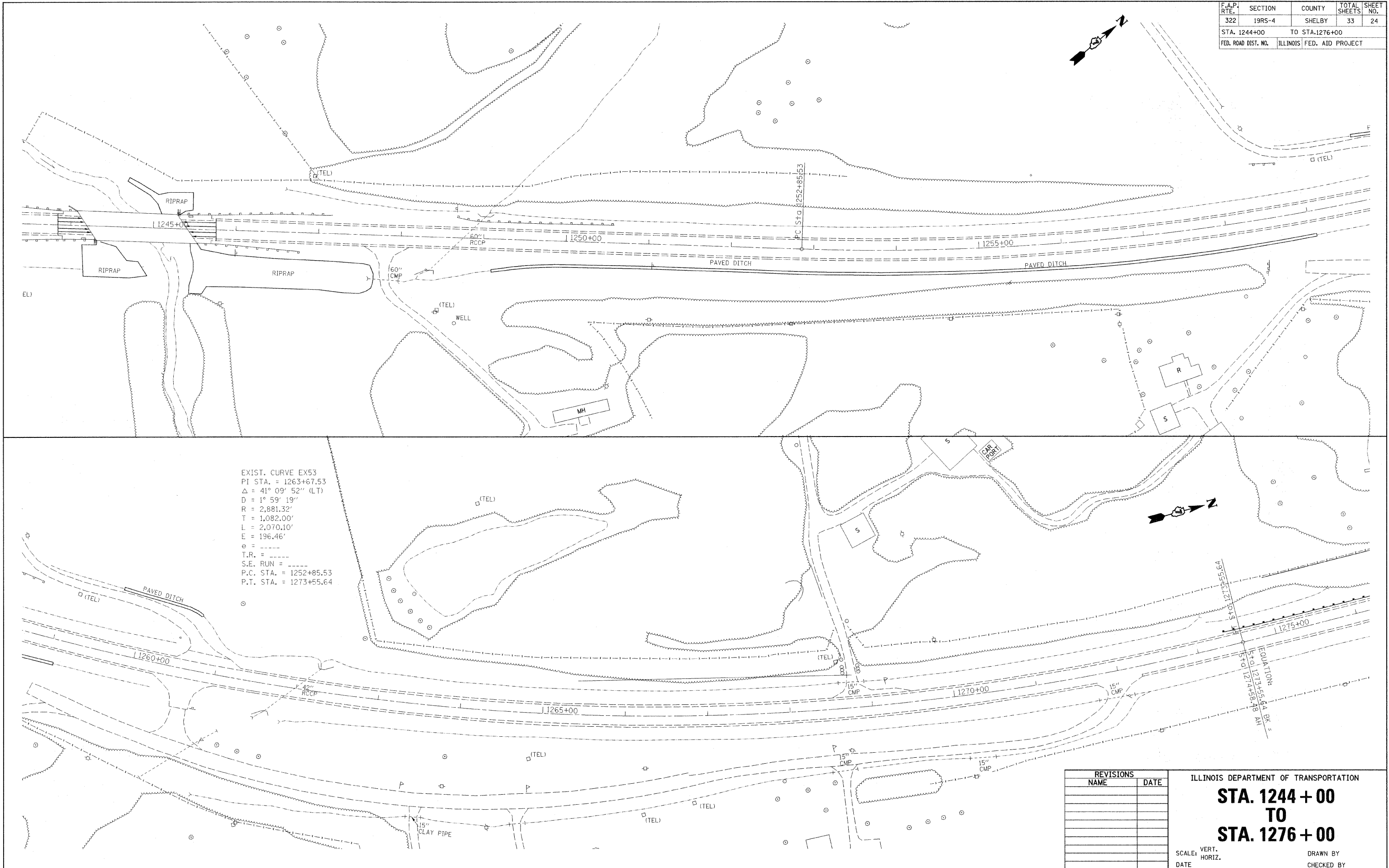


F.A.P. RTE.	SECTION	COUNTY	TOTAL SHEETS	SHEET NO.
322	19RS-4	SHELBY	33	24
STA. 1244+00		TO STA. 1276+00		
FED. ROAD DIST. NO.		ILLINOIS FED. AID PROJECT		



EXIST. CURVE EX53
 PI STA. = 1263+67.53
 $\Delta = 41^\circ 09' 52''$ (LT)
 $D = 1^\circ 59' 19''$
 $R = 2,881.32'$
 $T = 1,082.00'$
 $L = 2,070.10'$
 $E = 196.46'$
 $e = \text{-----}$
 $T.R. = \text{-----}$
 $S.E. \text{ RUN} = \text{-----}$
 P.C. STA. = 1252+85.53
 P.T. STA. = 1273+55.64

REVISIONS	
NAME	DATE

ILLINOIS DEPARTMENT OF TRANSPORTATION
STA. 1244 + 00
TO
STA. 1276 + 00
 SCALE: VERT. _____
 HORIZ. _____
 DATE _____
 DRAWN BY _____
 CHECKED BY _____

PLOT DATE = 1/25/2008
 FILE NAME = c:\p\projects\74144\ah\plan_74144.dgn
 PLOT SCALE = 50,000 / IN.
 USER NAME = sweitzer